

BOSSWELD

JET

ELECTRONIC WELDING HELMET



INSTRUCTION MANUAL

Thank you for choosing a **BOSSWELD Electronic Welding Helmet**. In this manual you will find instructions on how to set up your welding helmet along with general welding information safety information and helpful tips. We encourage you to go online to our website for more tips and troubleshooting as well as many welding resources.

IMPORTANT: REMOVE PROTECTIVE FILMS BEFORE USE!

Before using the welding helmet, user must remove the protective films from both the inner and outer lenses. These films are only there to prevent scratches during manufacturing and shipping. If you don't remove them, your vision will be blurry and obscured. (Page 7 Step 1)

BOX CONTENTS

1. Auto Darkening Welding Helmet
2. Spare Outer Lens x 1
(110 x 102.5mm)
3. Spare Inner Lens x 1
(100 x 47.5mm)



SPECIFICATIONS

Part No.	710100
Cartridge Size	110 x 90mm
Viewing Area	96 x 44mm (42cm ²)
Grind Function	Yes - External Switch
Optical Class	1 / 1 / 1 / 2
TrueView+ Technology	YES
UV/IR Protection	Permanent, DIN16
Operating Display	Analog
Arc Sensors	2
Switching Time	0.04ms
Shade State	W3 / 4-8 / 9-13
Shade Control	External
Sensitivity Variable	Internal, variable
Delay Time Variable	0.1-1.0s, Internal
Power Supply	Solar Cell & Replaceable Li-Battery CR2032 X 1
TIG Rating	>5A
Operation Temp.	-10°C – +60°C
Warranty	1 years

SPARES PART

PART NO.	DESCRIPTION
710118	Bossweld Jet Electronic Lens
710217	Bossweld Jet and Crew Helmet Lens Pack (5 outer lens / 2 inner lens)
710216	Bossweld Jet, Crew, H3, Firestorm, Armour, Neo-FX Sweatband (Pkt 2)
710215	Bossweld Jet, Crew Harness Assembly

SAFETY PRECAUTIONS READ BEFORE USING



READ INSTRUCTIONS

- Read and follow all labels and Owner's Manual carefully before installing, operating, or servicing unit. Read the safety information at the beginning of the manual and in each section.
- Use only genuine replacement parts from the manufacturer.
- Perform maintenance and service according to the Owner's Manuals, industry standards, and national, state, and local codes.

SYMBOL USAGE

DANGER!-Indicates a hazardous situation which, if not avoided, will result in death or serious injury. The possible hazards are shown in the adjoining symbols or explained in the text.



NOTICE!-Indicates statements not related to personal injury. Indicates special instructions

This group of symbols means Warning! Watch Out! ELECTRIC SHOCK, MOVING PARTS, and HOT PARTS hazards. Consult symbols and related instructions below for necessary actions to avoid the hazards.

ARC WELDING HAZARDS

The symbols shown below are used throughout this manual to call attention to and identify possible hazards. When you see the symbol, watch out, and follow the related instructions to avoid the hazard. The safety information given below is only a summary of the more complete safety information found in the Safety Standards listed in Section 1-5. Read and follow all Safety Standards.

Only qualified persons should install, maintain, and repair this unit.

During operation, keep everybody, especially children, away..



ARC RAYS CAN BURN EYES AND SKIN

Arc rays from the welding process produce intense visible and invisible (Ultraviolet and infrared) rays that can burn eyes and skin. Sparks fly off from the weld.

- Wear a welding helmet fitted with a proper shade of filter to protect your face and eyes when welding or watching. Refer to Lens Shade Selection table at the bottom.
- Wear approved safety glasses with side shield under your helmet.
- Use protective screens or barriers to protect others from flash, glare, and sparks; warn others not to watch the arc.
- Wear protective clothing made from durable, flame-resistant material (leather, heavy cotton, and wool) and foot protection.
- Before welding, adjust the auto-darkening lens sensitivity setting to meet the application.
- Stop welding immediately if the auto-darkening lens does not darken when the arc is struck. See the Owner's Manual for more information.

SHADE SELECTION

Start with a shade that is too dark to see the weld zone. Then, go to a lighter shade which gives a sufficient view of the weld zone without going below the minimum.

WELDING PROCESS	ARC CURRENT (AMPERES)																						
	1.5	6	10	15	30	40	60	70	100	125	150	175	200	225	250	300	350	400	450	500	600		
SMAW	8						9			10			11			12			13			14	
MAG	8							9		10			11			12			13			14	
TIG	8				9			10			11			12		13							
MIG (Heavy)	9								10			11			12		13		14				
MIG (Light)	10									11			12		13		14						
PAC	9								10		11		12			13							
PAW	4	5	6	7	8	9	10	11			12												
Note	★ SMAW-Covered Electrodes ★ MAG-Metal Arc Welding ★ TIG-Gas Tungsten Arc Welding											★ MIG (Heavy)-MIG with Heavy Metals ★ MIG (Light)-MIG with Light Alloys ★ PAC-Plasma Jet Cutting ★ PAW-Microplasma Arc Welding											

PREPARATIONS BEFORE USE

1. Protective Films

Must remove the protective films from both the inner and outer lenses. (Page 7 Step 1)
If you don't remove them, your vision will be blurry and obscured.

2. Check Batteries

Many auto-darkening helmets rely on batteries (some are solar-assist with a battery backup).
A low or dead battery is a common cause of failure. Replace them as needed.
The batteries should be installed/replaced when the low battery indicator flashes.

3. Clean Sensors and Lenses

Dust, dirt, spatter, or smudges on the external sensors or the front cover lens can block light from reaching the sensors, preventing the helmet from darkening. Clean them regularly with a soft, lint-free cloth.

4. Check for Damage

Inspect the helmet for any cracks, deep scratches, or other physical damage, especially on the lens or around the sensors.

5. Settings

Ensure your sensitivity and shade settings are appropriate for the type of welding you intend to do.
If the sensitivity is too low, the helmet might not trigger.

6. Grind Mode

Make sure the helmet is NOT in "Grind Mode" if you expect it to darken.
Grind mode bypasses the auto-darkening function.

AUTO-DARKENING FILTER FUNCTION

1. Weld Mode

This is the primary mode for most welding processes (MIG, TIG, Stick/MMA, Flux-Cored). When an arc is struck, the helmet's sensors detect the bright light and instantly darken the lens to a range of shade **9 to 13**.

2. Cutting Mode

This mode is specifically designed for cutting processes, such as plasma cutting, oxy-fuel cutting, or air carbon arc cutting. These processes also produce intense light, but often require a slightly different shade range than welding. Cutting modes typically offer shades in the range of shade **4 to 8**.

3. Grind Mode

When activated, this mode essentially turns off the auto-darkening feature and keeps the lens in a very light state, typically around shade 3 or 4. This allows you to clearly see your work while grinding (e.g., preparing metal, cleaning welds, or sharpening electrodes) without having to remove your helmet.

4. Shade Function

Controls darkness level of the lens that protects your eyes from the welding arc's intense light and radiation.

5. Sensitivity Function

Controls how much light is required to trigger the lens to darken.

6. Delay Function

Controls how long the lens stays dark after the welding arc stops.

AUTO-DARKENING FILTER ADJUSTMENTS

1. Selecting Modes

Push internal switch up to select Weld mode. Push the switch down to select Cutting mode.

2. Selecting Grind Mode

Rotate the external knob until you hear a click to select the GRIND mode.

3. Selecting Shade Range

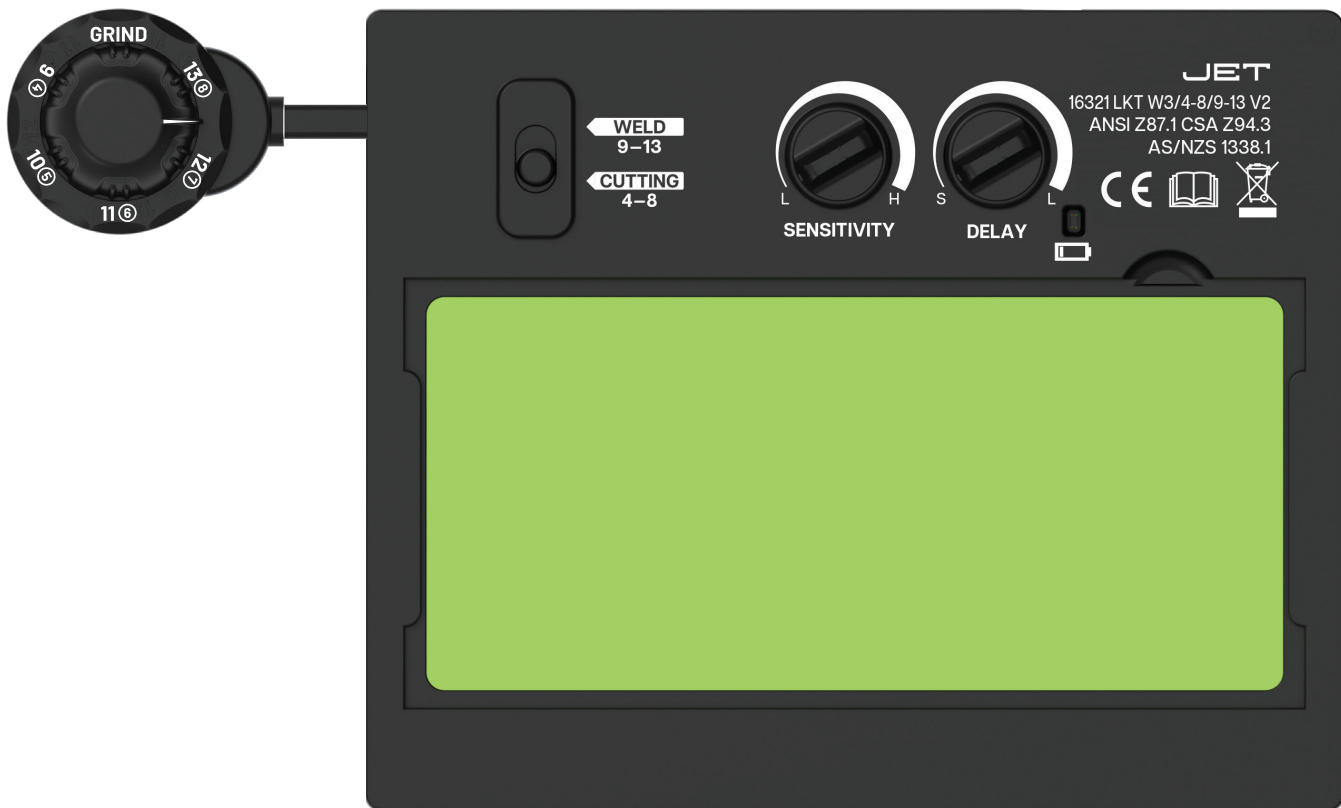
Rotate external knob to select Shade 9 – 13 in WELD mode and Shade ④ – ⑧ in CUTTING mode.

4. Selecting Sensitivity Range

Rotate the internal SENSITIVITY knob to select your desired option.

5. Selecting Delay Range

Rotate the internal DELAY knob to select your desired option.



- ⚠ If the auto-darkening filter does not function as described above, do not use, check trouble shooting guide in this manual or contact Bossweld service support (details in back of manual).
- ⚠ The auto-darkening filter may not turn dark if the sensors are blocked or the welding arc is totally shielded. Flashing light sources (e.g. safety strobe lights) can trigger the auto-darkening filter making it flash when no welding is occurring. This interference can occur from long distances and/or from reflected light. Welding areas must be shielded from such interference.
- ⚠ The auto-darkening filter will automatically turn off after a period of inactivity.

HELMET ADJUSTMENTS

1. Adjusting the Headgear Tightness

- To adjust the headgear's top for a proper fit, push the small button through the current slot, slide it to the desired slot, and snap the small button into place (A).
- Adjust the headgear by turning the adjusting wheel (B) to match your head circumference.
- Once you've put on the helmet, move your head to ensure it sits securely and stably.

2. Adjusting the Distance Between the Filter and the Face

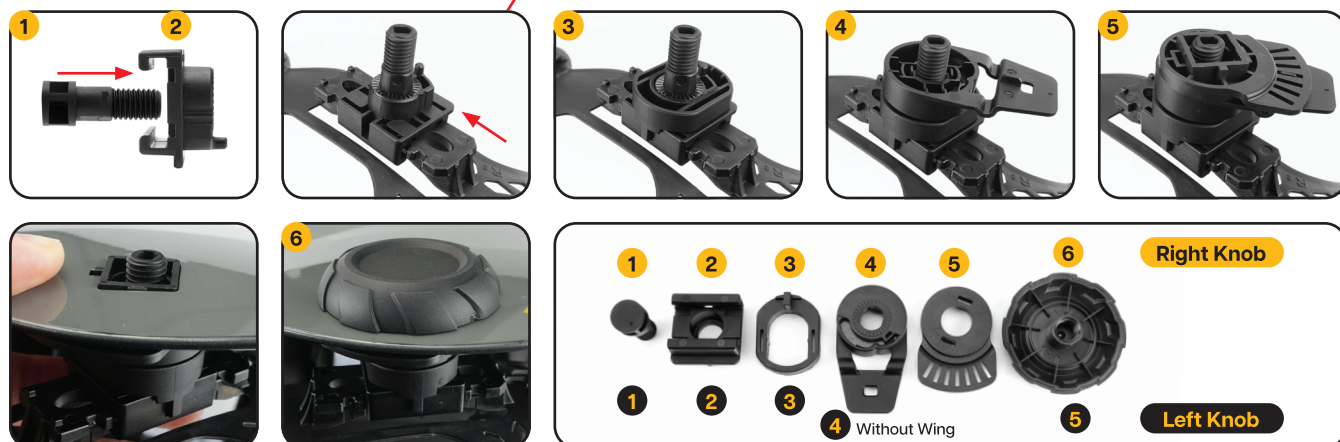
- Press down and hold the buttons on both sides (C) so the headgear can be slide back and forth.
- Release the buttons to snap the pins into slots. Make sure the distance between the lens to
- both eyes are the same.

3. Adjusting the Viewing Angle

- Loosen the right block nut.
- Adjust the viewing angle with the pins on the angle limitation washer.
- Press up the pin to adjust into the desired slot on the right boot screw (D).
- Re-tighten the right block nut.

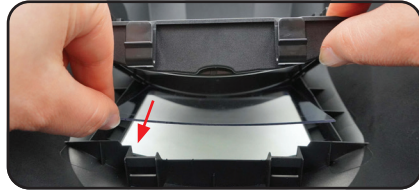
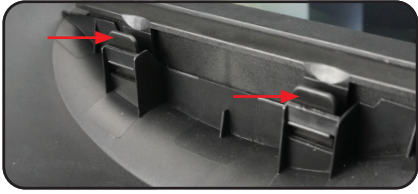


4. Head Harness Assembly

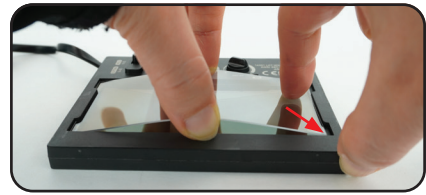
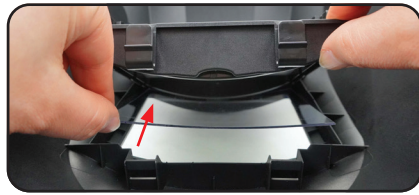
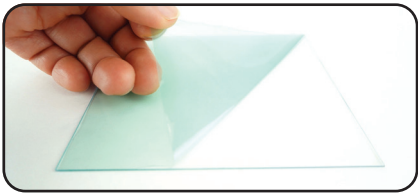


1. Replacing the Cover Lens

- Unlock the Auto-darkening filter cartridge holder by pushing the buttons upwards.
- Remove the filter cartridge then take out the used outer lens.
- For inner lens, place your fingernail in recess above the filter view window and flex lens upwards until it releases from edges of filter view window.

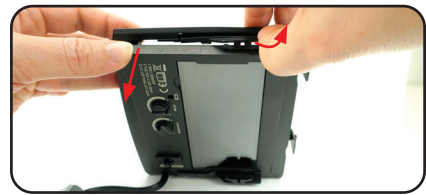
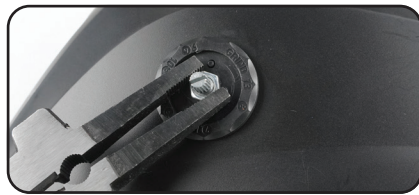


- Remove protective film on new cover lens.
- Simply place the new outer lens into the same position.
- For inner lens, place the left edge first then make a U curve shape to push in the right edge in.



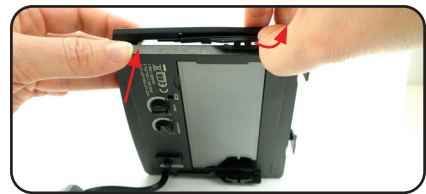
2. Replacing the Auto-darkening Filter

- To remove the knob, gently slide a thin, rigid object (like an unsharpened metal ruler or a sturdy plastic shim) underneath the external knob. Then apply force to the other end to effectively lift the knob out of its position.
- Unscrew the nut to remove cartridge from the helmet.
- Press the cartridge holder clip outward then push out the cartridge.



3. Replacing Batteries

Slide the battery holder out of the auto darkening filter (remove the used battery when replacing battery), put 1 new CR2032 battery inside the battery holder, and put the battery holder back into the auto darkening filter. Please make sure the anode and cathode of the battery are installed correctly.



4. Changing the Sweatband

- Remove the old sweatband from the headgear.
- Wrap a new sweatband around the front headgear, then each hole secures onto the pin.



CLEANING & STORAGE

- Clean the welding helmet with mild soap and lukewarm water.
- Use mild disinfection solution to disinfect the protector. Do not use solvents.
- Clean the auto-darkening filter with a clean, lint-free tissue or cloth.
- Do not immerse auto-darkening filters in water or spray directly with liquids.
- Store the welding visor fully assembled in a place that is dry and free of dirt.
- Protect from direct sunlight and thermal radiation.
- Switch to grind mode when not in use. This will prolong the battery life.

TROUBLE-SHOOTING GUIDE

FAULT	CAUSE	REMEDY
The auto-darkening filter flickers or does not auto-darken	Low battery level	Replace the batteries
	The outside cover lens is dirty	Replace the outside cover lens
	Dirty arc sensors	Clean the arc sensors
	Low welding current	Use a higher sensitivity setting
Darkening is uneven	The distance between eyes and auto-darkening filter is different for each eye	Check the headgear settings
The response time is too long	The ambient temperature is too low	Use only within the specified temperature range (above -10 °C or 14 °F)
Poor vision quality	The outside cover lens is dirty or scratched	Clean or replace the outside cover lens
	The wrong shade number was selected	Select the right shade number
	The protective film has not been removed	Remove the protective film
Welding helmet slips	Incorrect headgear settings	Adjust the headgear

WARRANTY

For service support please call (02) 8761 6500. In order to make a claim under warranty you must return the product to the original place of purchase along with your purchase receipt. Faulty goods should be returned in their original packaging along with any supplied accessories.

1 YEAR WARRANTY

Your product is guaranteed against manufacturing workmanship or defect for a period of 12 months from the original date of purchase. This warranty covers manufacturing defects in materials, workmanship and finish under normal use. If a product is found to be defective we reserve the right to repair or replace at our sole discretion.

No responsibility will be taken for products lost, damaged or mislaid whilst in transit.

To the extent permitted by law this warranty does not cover any indirect or consequential losses and our total liability, if any, shall be limited to the amount paid for the product by you to the retailer.

The benefits provided under this warranty are in addition to other rights and remedies which are available to you under Australian law.

WARRANTY EXCLUSIONS

The following actions will result in the warranty being void:

- Damage, faults or defects arising from misuse, abuse accidents or alterations
- Failure to perform maintenance or maintain good working condition.
- If the any modifications are made.
- Fair wear and tear.

This warranty is given by Dynaweld Industrial Supplies Pty Ltd

Ph.1300 899 710

Australia (Head Office): 2/10 Jessica Place, Prestons, NSW, Australia, 2170

Scan to Learn More

