

**RESWEA10**



## IMPORTANT!

It is essential that you read the instructions in this manual before assembling, operating, and maintaining the product.

Subject to technical modification.

Safety, performance, and dependability have been given top priority in the design of your sweeper attachment.

## INTENDED USE

The sweeper attachment is designed to be attached to power heads for sweeping leaves on grass. The product is intended for outdoor use only. The product should not be used on anything other than domestic grass lawns.

The product is approved for use with the following power heads:

- petrol-driven power head RLT254CDSO
- electric-driven power head RLT1238
- battery-driven power heads RLT36BS, R18XBCT10, R36LTR10, R36XLTR30, and R36LTR20

Do not use the product for any other purpose.

## GENERAL PRODUCT SAFETY WARNINGS

**⚠ WARNING! Read all safety warnings, instructions, illustrations and specifications provided with this power tool.** Failure to follow all instructions listed below may result in electric shock, fire and/or serious injury.

**Save all warnings and instructions for future reference.**

The term "power tool" in the warnings refers to your mains-operated (corded) product or battery-operated (cordless) product.

## WORK AREA SAFETY

- **Keep work area clean and well lit.** Cluttered or dark areas invite accidents.
- **Do not operate power tools in explosive atmospheres, such as in the presence of flammable liquids, gases or dust.** Power tools create sparks which may ignite the dust or fumes.
- **Keep children and bystanders away while operating a power tool.** Distractions can cause you to lose control.

## ELECTRICAL SAFETY

- **Power tool plugs must match the outlet. Never modify the plug in any way. Do not use any adapter plugs with earthed (grounded) power tools.** Unmodified plugs and matching outlets will reduce risk of electric shock.
- **Avoid body contact with earthed or grounded surfaces, such as pipes, radiators, ranges, and refrigerators.** There is an increased risk of electric shock if your body is earthed or grounded.
- **Do not expose power tools to rain or wet conditions.** Water entering a power tool will increase the risk of electric shock.
- **Do not abuse the cord. Never use the cord for carrying, pulling or unplugging the power tool. Keep cord away from heat, oil, sharp edges, or moving parts.** Damaged or entangled cords increase the risk of electric shock.

- **When operating a power tool outdoors, use an extension cord suitable for outdoor use.** Use of a cord suitable for outdoor use reduces the risk of electric shock.
- **If operating a power tool in a damp location is unavoidable, use a residual current device (RCD) protected supply.** Use of an RCD reduces the risk of electric shock.

## PERSONAL SAFETY

- **Stay alert, watch what you are doing, and use common sense when operating a power tool. Do not use a power tool while you are tired or under the influence of drugs, alcohol, or medication.** A moment of inattention while operating power tools may result in serious personal injury.
- **Use personal protective equipment. Always wear eye protection.** Protective equipment such as a dust mask, non-skid safety shoes, hard hat, or hearing protection used for appropriate conditions will reduce personal injuries.
- **Prevent unintentional starting. Ensure the switch is in the off-position before connecting to power source and/or battery pack, picking up or carrying the tool.** Carrying power tools with your finger on the switch or energising power tools that have the switch on invites accidents.
- **Remove any adjusting key or wrench before turning the power tool on.** A wrench or a key left attached to a rotating part of the power tool may result in personal injury.
- **Do not overreach. Keep proper footing and balance at all times.** This enables better control of the power tool in unexpected situations.
- **Dress properly. Do not wear loose clothing or jewellery. Keep your hair and clothing away from moving parts.** Loose clothes, jewellery, or long hair can be caught in moving parts.
- **If devices are provided for the connection of dust extraction and collection facilities, ensure these are connected and properly used.** Use of dust collection can reduce dust-related hazards.
- **Do not let familiarity gained from frequent use of tools allow you to become complacent and ignore tool safety principles.** A careless action can cause severe injury within a fraction of a second.

## POWER TOOL USE AND CARE

- **Do not force the power tool. Use the correct power tool for your application.** The correct power tool will do the job better and safer at the rate for which it was designed.
- **Do not use the power tool if the switch does not turn it on and off.** Any power tool that cannot be controlled with switch is dangerous and must be repaired.
- **Disconnect the plug from the power source and/or remove the battery pack, if detachable, from the power tool before making any adjustments, changing accessories, or storing power tools.** Such preventive safety measures reduce the risk of starting the power tool accidentally.
- **Store idle power tools out of the reach of children and do not allow persons unfamiliar with the power tool or these instructions to operate the power tool.**

Power tools are dangerous in the hands of untrained users.

- **Maintain power tools and accessories. Check for misalignment or binding of moving parts, breakage of parts and any other condition that may affect the power tool's operation. If damaged, have the power tool repaired before use.** Many accidents are caused by poorly maintained power tools.
- **Keep cutting tools sharp and clean.** Properly maintained cutting tools with sharp cutting edges are less likely to bind and are easier to control.
- **Use the power tool, accessories and tool bits etc. in accordance with these instructions, taking into account the working conditions and the work to be performed.** Use of the power tool for operations different from those intended could result in a hazardous situation.
- **Keep handles and grasping surfaces dry, clean and free from oil and grease.** Slippery handles and grasping surfaces do not allow for safe handling and control of the tool in unexpected situations.

### BATTERY TOOL USE AND CARE

- **Recharge only with the charger specified by the manufacturer.** A charger that is suitable for one type of battery pack may create a risk of fire when used with another battery pack.
- **Use power tools only with specifically designated battery packs.** Use of any other battery packs may create a risk of injury and fire.
- **When battery pack is not in use, keep it away from other metal objects, like paper clips, coins, keys, nails, screws or other small metal objects, that can make a connection from one terminal to another.** Shorting the battery terminals together may cause burns or a fire.
- **Under abusive conditions, liquid may be ejected from the battery; avoid contact. If contact accidentally occurs, flush with water. If liquid contacts eyes, additionally seek medical help.** Liquid ejected from the battery may cause irritation or burns.
- **Do not use a battery pack or tool that is damaged or modified.** Damaged or modified batteries may exhibit unpredictable behaviour resulting in fire, explosion or risk of injury.
- **Do not expose a battery pack or tool to fire or excessive temperature.** Exposure to fire or temperature above 130 °C may cause explosion.
- **Follow all charging instructions and do not charge the battery pack or tool outside the temperature range specified in the instructions.** Charging improperly or at temperatures outside the specified range may damage the battery and increase the risk of fire.

### SERVICE

- **Have your power tool serviced by a qualified repair person using only identical replacement parts.** This will ensure that the safety of the power tool is maintained.
- **Never service damaged battery packs.** Service of battery packs should only be performed by the manufacturer or authorised service providers.

### ADDITIONAL SAFETY WARNINGS

- The product is not intended to be used by children or persons with reduced physical, sensory, or mental capabilities or lack of experience and knowledge.
- Keep in mind that the operator is responsible for accidents or hazards occurring to other people or their property.
- Be familiar with all the controls and the correct use of the product.
- Avoid using the product in bad weather, especially when there is a risk of lightning.
- Do not use the product near drop-offs, ditches, or excessively steep slopes.
- Never use the product on a rooftop or other unstable surface, which can result in death or serious personal injury.
- Do not operate the product on a paved or gravel surface where ejected material could cause injury.
- Thoroughly inspect the area where the product is to be used, and remove all rocks, sticks, metal, wire, bones, toys, or other foreign objects.
- Never use the product with defective guards or shields, or without safety devices, such as deflectors, in place.
- Check that all screws, nuts, bolts, and other fasteners are properly secured and that guards and screens are in place. Replace damaged or unreadable labels.
- Use the product with the J handle attached to maximise control and safety when operating. Make sure that the J handle is attached in accordance with the assembly instructions in this manual.
- Power on the product carefully according to the instructions, and keep hands and feet away from the bristles. Do not put hands or feet near or under rotating parts. Keep clear of the discharge opening at all times.
- Do not tilt the product when powering it on or while it is running.
- Power on the product on a level surface by using a two-handed operation with the operator behind the J handle.
- Both wheels should touch the ground while sweeping. Do not pull or ride on the product.
- Use extreme caution when reversing or pulling the product towards you.
- Use the product across the face of slopes, never up and down. Exercise extreme caution when changing direction on slopes.
- Never pick up or carry the product while it is running.
- Power off the product if it has to be tilted for transportation when crossing surfaces other than grass, and when transporting the product to and from the work area.
- Power off the product. For battery-driven power heads, remove the battery pack. For electric-driven power heads, disconnect the product from the power supply. Make sure that all moving parts have come to a complete stop:
  - whenever you leave the product unattended (including disposal of grass clippings)
  - before clearing a blockage
  - before checking, cleaning, or working on the product
  - before inspecting the product for damage after striking a foreign object

- if the product starts to vibrate abnormally, check the product immediately for loose parts or damage. Tighten any loose parts and repair any damaged parts.
- Injuries may be caused, or aggravated, by prolonged use of the product. When using the product for prolonged periods, ensure to take regular breaks.

#### ASSEMBLY WITH ELECTRIC-DRIVEN POWER HEAD

- Electrical power should be supplied via a residual current device (RCD) with a tripping current of not more than 30 mA.
- Before every use, examine the power cord for damage. If the power cord is damaged, contact customer service to avoid a hazard.
- If you need to use an extension cord, ensure that it is suitable for outdoor use and has a current capacity rating sufficient to supply the product. Check the extension cord before every use for damage. Always uncoil the extension cord during use because coiled cords can overheat.
- If the cord becomes damaged during use, disconnect the cord from the supply immediately. Damaged cords can lead to contact with live parts. Do not touch the cord before disconnecting the supply. Do not use the product if the cord is damaged or worn. Damaged extension cords should not be repaired, they should be replaced with an equivalent type.
- Make sure that the power cord is positioned so that it will not be stepped on, tripped over, or otherwise subjected to damage or stress. Always direct the power cord to the rear, away from the product.
- Make sure that the voltage is correct for the product. A nameplate on the product indicates the product's voltage. Never connect the product to an AC voltage that differs from this voltage.
- Make sure that the switch is in the off position before disconnecting the product from the power supply.

#### ASSEMBLY WITH PETROL-DRIVEN POWER HEAD

- Power off the product and allow it to cool down before refuelling or storing the product.
- Mix and store fuel in a container that is approved for fuel.
- Mix fuel outdoors where there are no sparks or flames. Do not smoke when mixing fuel or filling the fuel tank.
- Wipe up any fuel spillage. Move 9 m away from the refuelling site before turning on the product.
- Never turn on or run the product in a closed or poorly ventilated place. Breathing exhaust fumes can kill.
- Do not touch the area around the silencer or the cylinder of the product; these parts get hot from operation.

#### ADDITIONAL BATTERY SAFETY WARNINGS

- To reduce the risk of fire, personal injury, and product damage due to a short circuit, never immerse the product, battery pack, or charger in fluid or allow fluid to flow inside them. Corrosive or conductive fluids, such as seawater, certain industrial chemicals, and bleach or bleach-containing products, etc., can cause a short circuit.
- Charge the battery pack in a location where the ambient temperature is between 10 °C and 38 °C.

- Store the battery pack in a location where the ambient temperature is between 0 °C and 40 °C.
- Use the battery pack in a location where the ambient temperature is between 0 °C and 40 °C.

#### TRANSPORTATION AND STORAGE

- Power off the product. For battery-driven power heads, remove the battery pack and secure it separately. For electric-driven power heads, disconnect the product from the power supply. Allow the product to cool down before storing or transporting in a vehicle.
- Remove all foreign materials from the product. Store the product in a cool, dry, and well-ventilated place that is inaccessible to children. Keep the product away from corrosive agents, such as garden chemicals and de-icing salts. Do not store the product outdoors.
- Store the product in a location where the ambient temperature is between 0 °C and 40 °C.
- For transportation, secure the product against movement or falling to prevent injury to persons or damage to the product.
- Use extreme caution when lifting or tilting the product for maintenance, cleaning, storage, or transportation.

#### ASSEMBLY WITH PETROL-DRIVEN POWER HEAD

- Drain all the fuel from the tank into a container approved for petrol. Remember to properly replace and tighten the fuel cap.
- If applicable, drain all the lubricant from the tank into a container approved for lubricant. Remember to properly replace the lubricant cap.
- Turn on the product until it stops to remove all fuel that could become stale and leave varnish and gum in the fuel system.
- Never carry or transport the product while the engine is running.
- Follow all government and local regulations for the safety storage and handling of petrol.
- For short term storage (less than one month), turn off the product, and allow it to cool down before storing.

#### TRANSPORTING LITHIUM BATTERIES

Transport the battery in accordance with local and national provisions and regulations.

Follow all special requirements on packaging and labelling when transporting batteries by a third party. Ensure that no batteries can come in contact with other batteries or conductive materials while in transport by protecting exposed connectors with insulating, non-conductive caps or tape. Do not transport batteries that are cracked or leaking. Check with the forwarding company for further advice.

#### MAINTENANCE

- Use only original manufacturer's replacement parts, accessories, and attachments. Failure to do so can cause injury, can contribute to poor performance, and may void your warranty.
- Do not touch moving hazardous parts before the battery pack is removed and the moving hazardous parts have come to a complete stop.

- Check all nuts, bolts, and screws at frequent intervals for proper tightness to ensure that the product is in safe working condition.
- Be careful during adjustment of the product to prevent entrapment of the fingers between moving and fixed parts of the product.
- When servicing the bristle assembly, be aware that even though the power source is turned off, the bristle assembly can still be moved.
- Replace worn or damaged parts before operating the product. Use only genuine replacement parts and accessories.
- When the product is stopped for servicing, inspection, or storage, or changing an accessory, power off the product and remove the battery pack. Make sure that all moving parts have come to a complete stop. Allow the product to cool down before making any inspections and adjustments. Maintain the product with care and keep it clean.
- Avoid using solvents when cleaning plastic parts. Most plastics are susceptible to damage from various types of commercial solvents and may be damaged by their use. Use a clean cloth to remove dirt, dust, oil, grease, etc.

#### CLEARING BLOCKAGES

- Power off the product. For battery-driven power heads, remove the battery pack. For electric-driven power heads, disconnect the product from the power supply.
- Always wear heavy-duty gloves when checking or clearing a blockage. The blockage could be a sharp object.
- Turn the product on its side and check the underside of the product and the area around the bristles. Remove any found blockages carefully. Remember that the bristles may move during cleaning.

#### SYMBOLS ON THE PRODUCT



Safety alert



Read and understand all instructions before operating the product. Follow all warnings and safety instructions.



Wear eye, ear, and head protection.



Wear non-slip, heavy-duty gloves.



Wear appropriate respiratory mask.



Wear non-slip safety footwear when using the product.



Do not expose the product to rain or damp conditions.



Rotating fans. Keep hands and feet out of openings while the product is running.



Keep feet away from the rotating blade.



Disconnect the plug from the power outlet immediately before maintenance or if the cable is damaged or cut.



Beware of thrown or flying objects. Keep all bystanders, especially children and pets, at least 15 m away from the operating area.



Guaranteed sound power level



Regulatory Compliance Mark (RCM). Product meets applicable regulatory requirements.



Waste electrical products should not be disposed of with household waste. Please recycle where facilities exist. Check with your local authority or retailer for recycling advice.

#### SYMBOLS IN THIS MANUAL



Note



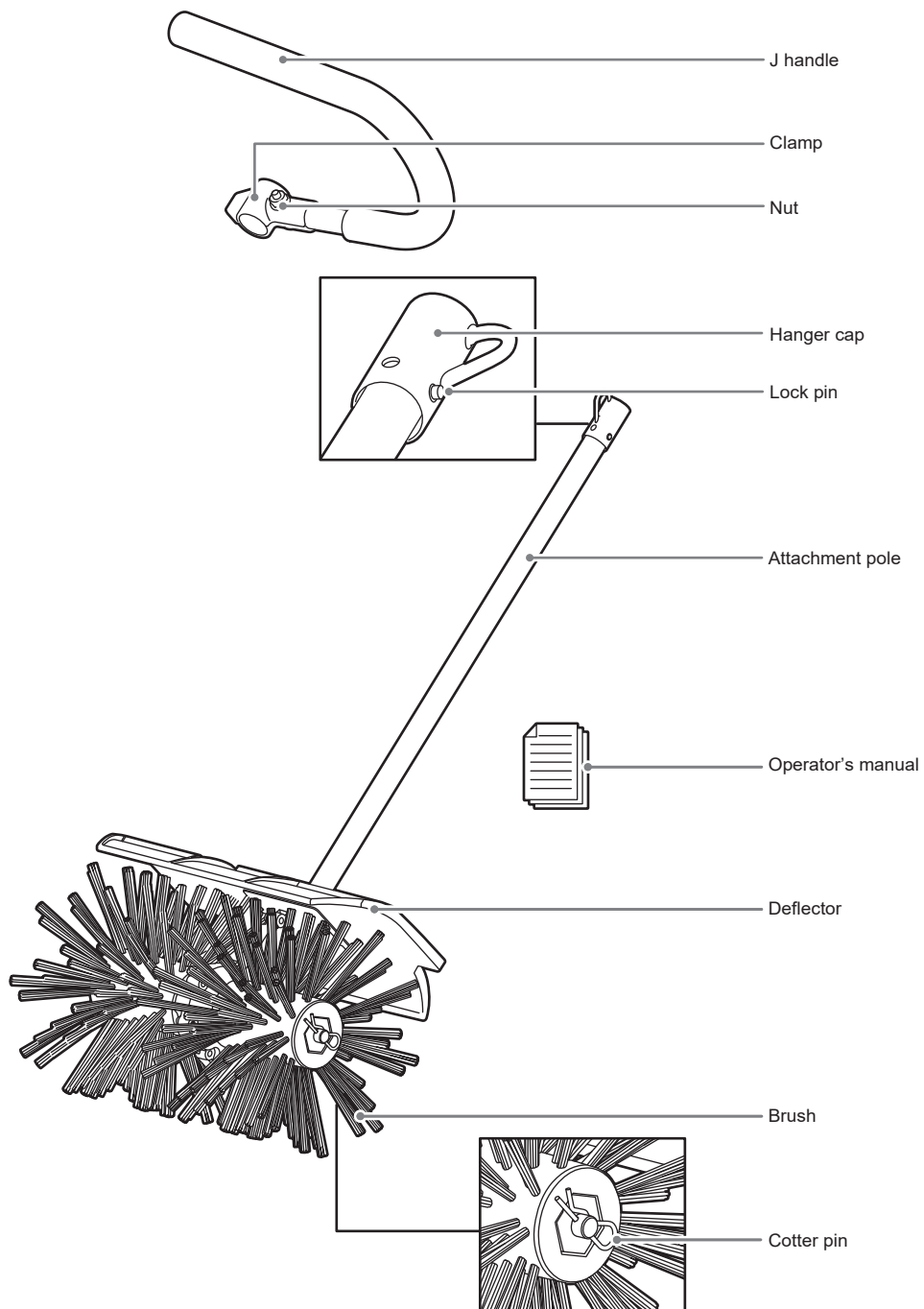
Warning



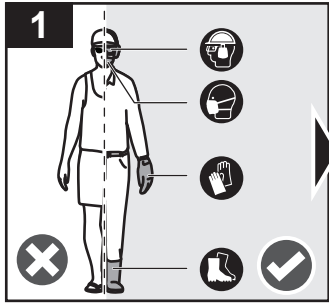
Parts or accessories sold separately



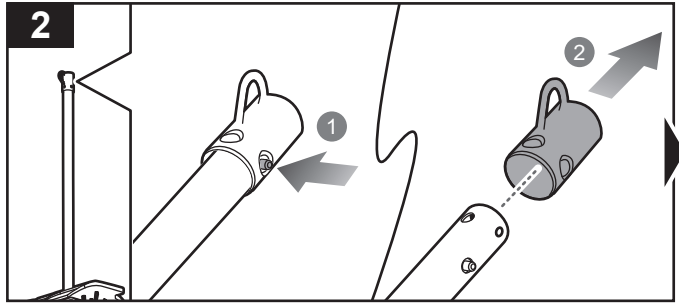
RESWEA10



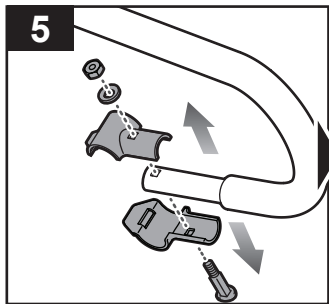




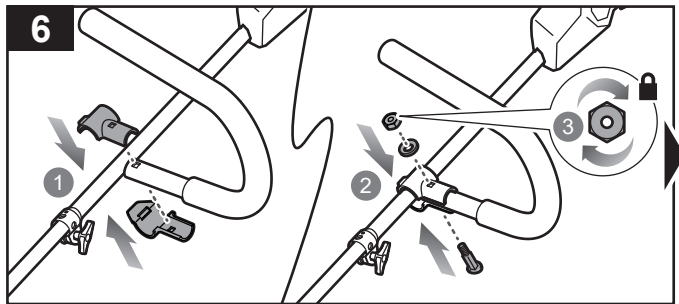
Wear full eye protection, ear and head protection, appropriate respiratory mask, non-slip heavy-duty gloves, and substantial footwear while operating the product. Do not operate the product when barefoot or wearing open sandals.



Press the lock pin and remove the hanger cap from the attachment pole.

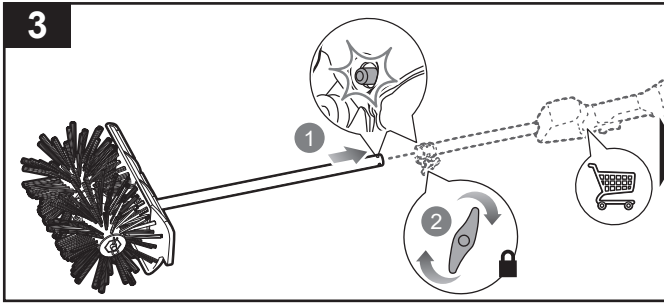


Remove the nut, washer, each side of the clamp, and screw from the J handle.



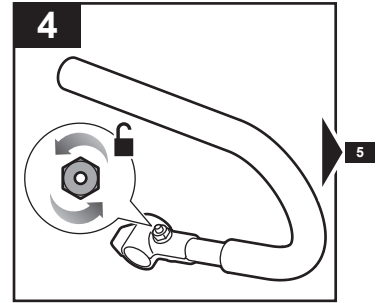
Install each side of the clamp, screw, washer, and nut to the power head and J handle connection. Turn the nut clockwise to tighten and secure the J handle.



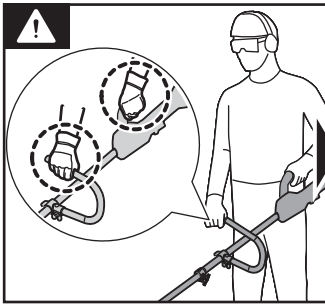


Insert the attachment pole into the power head connection point until the lock pin clicks into place. Turn the power head fastener knob clockwise to secure the connection.

**NOTE:** The power head is purchased separately.



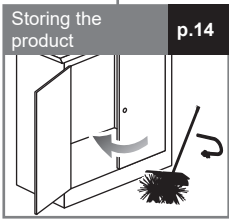
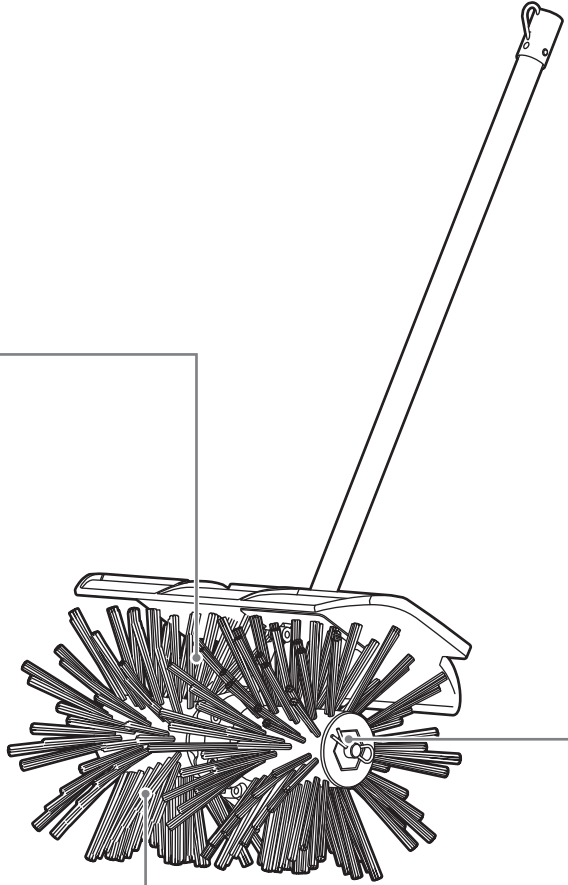
Turn the nut counterclockwise.

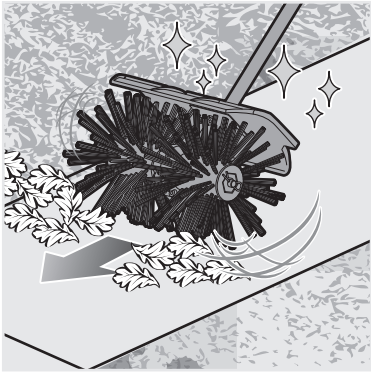


**WARNING:** The product must be adequately controlled by using a two-handed operation at all times.



Use the product to clear away debris.





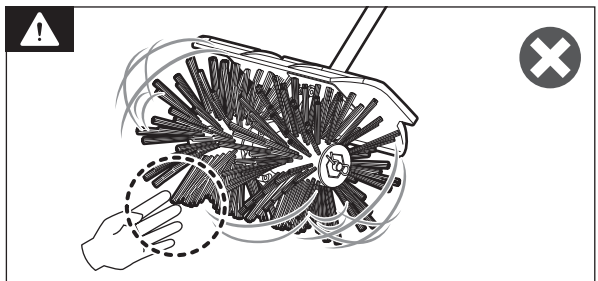
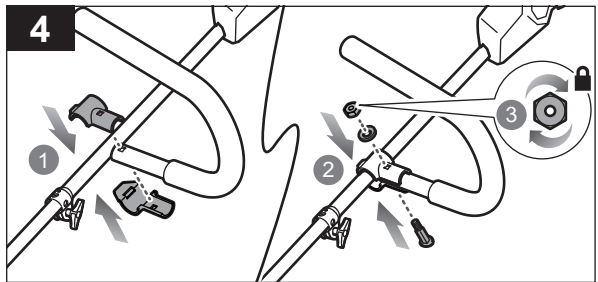
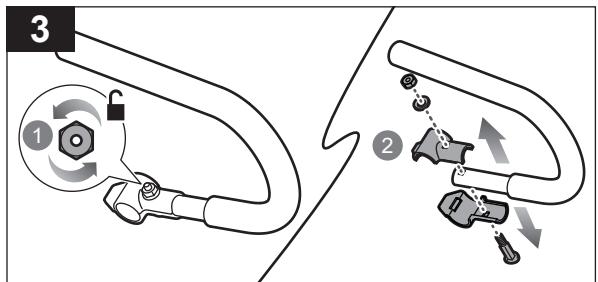
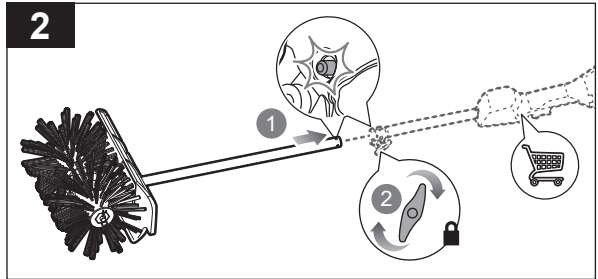
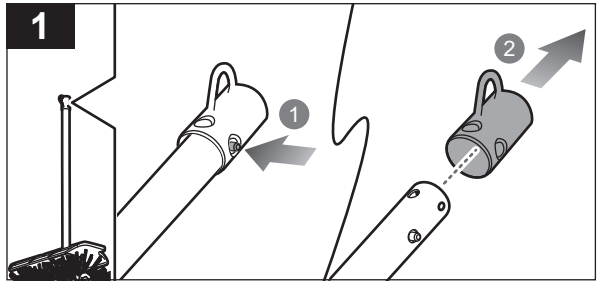
### OPERATING THE PRODUCT

1. Press the lock pin and remove the hanger cap from the attachment pole.
2. Insert the attachment pole into the power head connection point until the lock pin clicks into place. Turn the power head fastener knob clockwise to secure the connection.

**NOTE:** The power head is purchased separately.

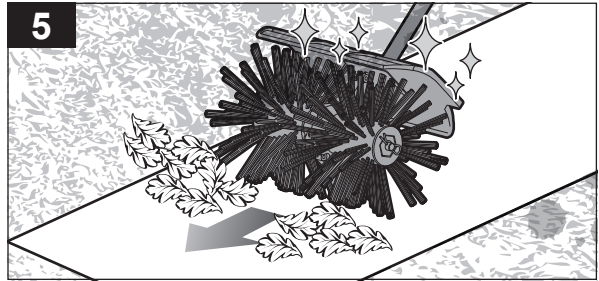
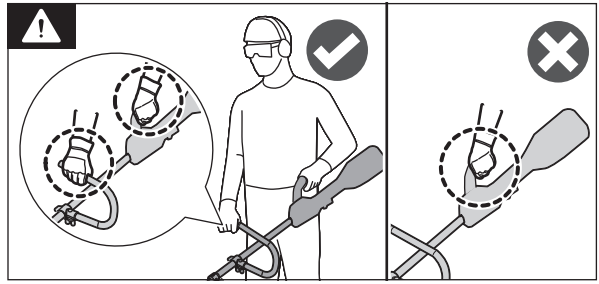
3. Turn the nut counterclockwise. Remove the nut, washer, each side of the clamp, and screw from the J handle.
4. Install each side of the clamp, screw, washer, and nut to the power head and J handle connection. Turn the nut clockwise to tighten and secure the J handle.

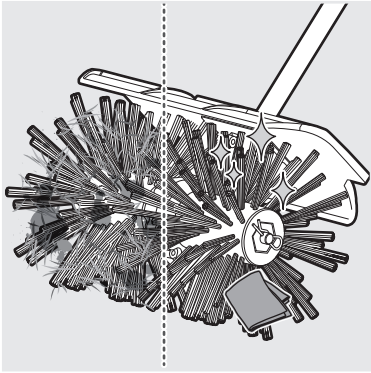
**WARNING:** Keep hands and feet away from the rotating brush at all times.



**WARNING:** The product must be adequately controlled by using a two-handed operation at all times.

5. Use the product to clear away debris.

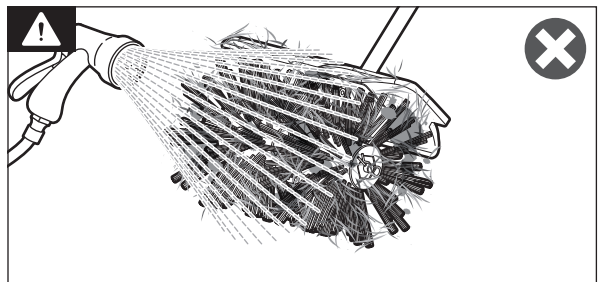
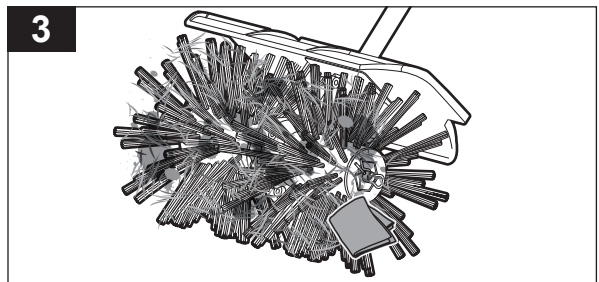
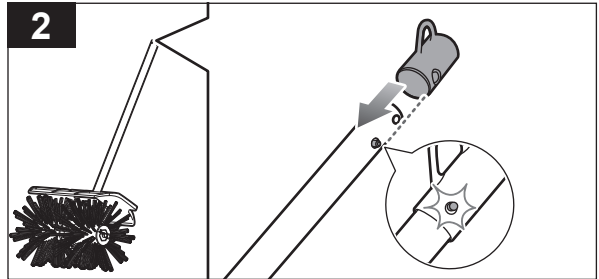
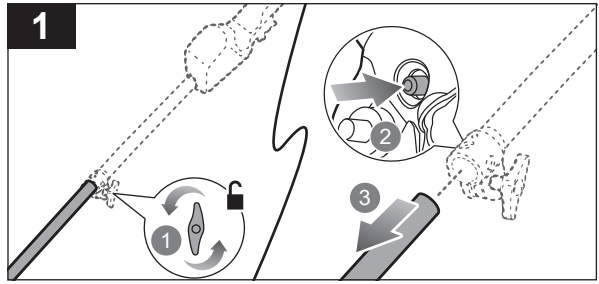


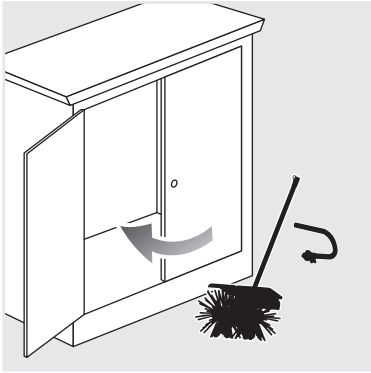


### CLEANING THE PRODUCT

1. Turn the power head fastener knob counterclockwise. Press the lock pin and pull the attachment pole from the power head.
2. Install the hanger cap to the attachment pole until the lock pin clicks into place.
3. Remove debris from the brush with a soft, dry cloth.

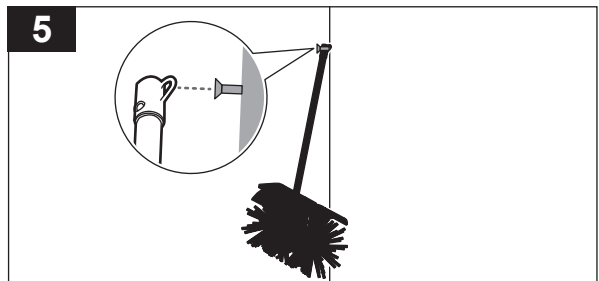
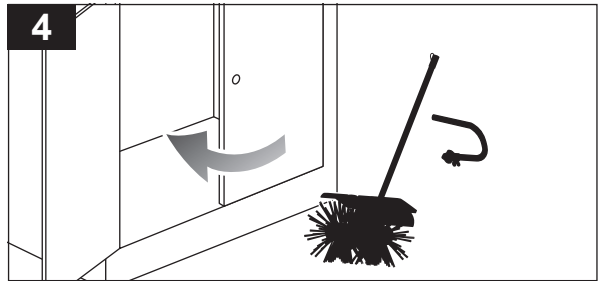
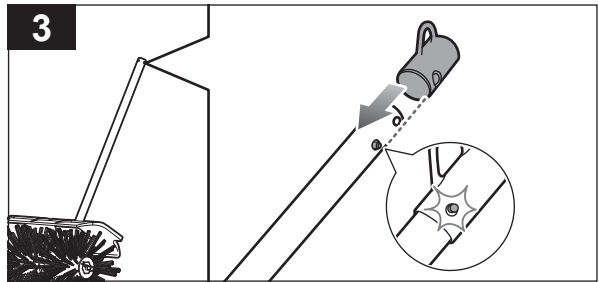
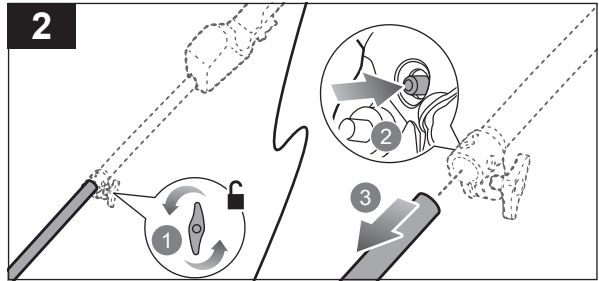
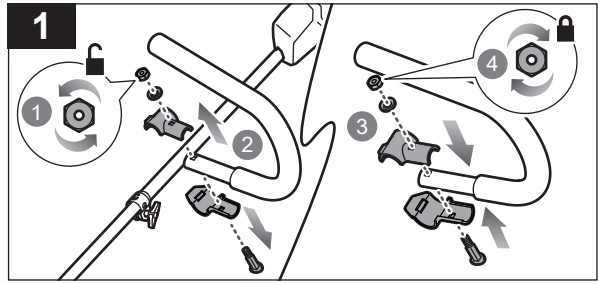
**WARNING:** Do not use water to clean the product.





### STORING THE PRODUCT

1. Turn the nut counterclockwise. Remove the nut, washer, each side of the clamp, screw, and J handle from the power head. Install each side of the clamp, screw, washer, and nut to the J handle. Turn the nut clockwise to tighten and secure the clamp.
2. Turn the power head fastener knob counterclockwise. Press the lock pin and pull the attachment pole from the power head.
3. Install the hanger cap to the attachment pole until the lock pin clicks into place.
4. Store the product in a cool, dry, and well-ventilated place that is inaccessible to children. Keep the product away from corrosive agents, such as garden chemicals and de-icing salts. Do not store the product outdoors.
5. Hook the attachment hanger to a screw on a vertical surface to hang the product.



20240506v1

## PRODUCT SPECIFICATIONS

Sweeper attachment

Model RESWEA10

Brush attachment length 98 cm

Brush diameter 25.4 cm

Total sweeping width 39 cm

**For assembling with petrol-driven power head (below values are measured with RLT254CDSO power head)**

Fuel tank below 580 cm<sup>3</sup>

Engine displacement 25.4 cm<sup>3</sup>/cc

Maximum engine performance (in accordance with ISO 8893) 0.85 kW

Rated engine performance 0.8 kW

Maximum rotational frequency of the spindle 12000 min<sup>-1</sup>

Engine speed (rotational frequency) at idle 2600–3400 min<sup>-1</sup>

Fuel consumption (in accordance with ISO 8893) at max. engine performance 0.38 kg/h

Specific fuel consumption (in accordance with ISO 8893) at max. engine performance 0.45 kg

No-load speed 245 min<sup>-1</sup>

Weight 10.2 kg

Vibration level

Front handle  $a_h = 5.7 \text{ m/s}^2$

Rear handle  $a_h = 6.4 \text{ m/s}^2$

Uncertainty  $K_h = 1.5 \text{ m/s}^2$

Noise emission level

A-weighted sound pressure level at the operator position  $L_{pA} = 93.7 \text{ dB(A)}$

Uncertainty  $K_{pA} = 3.0 \text{ dB}$

A-weighted sound power level  $L_{WA} = 106.4 \text{ dB(A)}$

Uncertainty  $K_{WA} = 3.0 \text{ dB}$

**For assembling with electric-driven power head (below values are measured with RLT1238 power head)**

Rated voltage 230–240 V a.c. 50 Hz

Rated power 1200 W

No-load speed 200 min<sup>-1</sup>

Weight 8 kg

Vibration level (in accordance with IEC 62841-1)

Front handle  $a_h = 1.6 \text{ m/s}^2$

Rear handle  $a_h = 2.7 \text{ m/s}^2$

Uncertainty  $K_h = 1.5 \text{ m/s}^2$

Noise emission level (in accordance with IEC 62841-1)

A-weighted sound pressure level at the operator position  $L_{pA} = 84.6 \text{ dB(A)}$

Uncertainty  $K_{pA} = 3.0 \text{ dB}$

A-weighted sound power level  $L_{WA} = 97.8 \text{ dB(A)}$

Uncertainty  $K_{WA} = 3.0 \text{ dB}$

**For assembling with battery-driven power head (below values are measured with RLT36BS power head)**

Rated voltage 36 V d.c.

No-load speed 200 min<sup>-1</sup>

Weight (without battery pack) 7.73 kg

Weight (with the heaviest battery pack) 10.43 kg

Vibration level (in accordance with IEC 62841-1)

Front handle  $a_h = 1.4 \text{ m/s}^2$

Rear handle  $a_h = 3.0 \text{ m/s}^2$

Uncertainty  $K_h = 1.5 \text{ m/s}^2$

Noise emission level (in accordance with IEC 62841-1)

A-weighted sound pressure level at the operator position  $L_{pA} = 75.6 \text{ dB(A)}$

Uncertainty  $K_{pA} = 3.0 \text{ dB}$

A-weighted sound power level  $L_{WA} = 89.2 \text{ dB(A)}$

Uncertainty  $K_{WA} = 3.0 \text{ dB}$

**For assembling with battery-driven power head (below values are measured with R36XLTR30 power head)**

Rated voltage 36 V d.c.

No-load speed

High speed 200 min<sup>-1</sup>

Low speed 170 min<sup>-1</sup>

Weight (without battery pack) 7.7 kg

Weight (with the heaviest battery pack) 10.4 kg

Vibration level (in accordance with IEC 62841-1)

Front handle  $a_h = 1.4 \text{ m/s}^2$

Rear handle  $a_h = 4.1 \text{ m/s}^2$

Uncertainty  $K_h = 1.5 \text{ m/s}^2$

Noise emission level (in accordance with IEC 62841-1)

A-weighted sound pressure level at the operator position  $L_{pA} = 74.7 \text{ dB(A)}$

Uncertainty  $K_{pA} = 3.0 \text{ dB}$

A-weighted sound power level  $L_{WA} = 85.4 \text{ dB(A)}$

Uncertainty  $K_{WA} = 3.0 \text{ dB}$

**For assembling with battery-driven power head (below values are measured with R36LTR10 power head)**

Rated voltage 36 V d.c.

No-load speed 200 min<sup>-1</sup>



Weight (without battery pack)	7.85 kg
Weight (with the heaviest battery pack)	10.55 kg
Vibration level (in accordance with IEC 62841-1)	
Front handle	$a_h = 2.4 \text{ m/s}^2$
Rear handle	$a_h = 3.4 \text{ m/s}^2$
Uncertainty	$K_h = 1.5 \text{ m/s}^2$

Noise emission level (in accordance with IEC 62841-1)	
A-weighted sound pressure level at the operator position	$L_{PA} = 78.1 \text{ dB(A)}$
Uncertainty	$K_{PA} = 3.0 \text{ dB}$
A-weighted sound power level	$L_{WA} = 89.5 \text{ dB(A)}$
Uncertainty	$K_{WA} = 3.0 \text{ dB}$

**For assembling with battery-driven power head (below values are measured with R18XBCT10 power head)**

Rated voltage	18 V d.c.
No-load speed	
High speed	180 $\text{min}^{-1}$
Low speed	160 $\text{min}^{-1}$
Weight (without battery pack)	7.6 kg
Weight (with the heaviest battery pack)	9.15 kg

Vibration level (in accordance with IEC 62841-1)	
Front handle	$a_h = 1.6 \text{ m/s}^2$
Rear handle	$a_h = 3.2 \text{ m/s}^2$
Uncertainty	$K_h = 1.5 \text{ m/s}^2$

Noise emission level (in accordance with IEC 62841-1)	
A-weighted sound pressure level at the operator position	$L_{PA} = 79.8 \text{ dB(A)}$
Uncertainty	$K_{PA} = 3.0 \text{ dB}$
A-weighted sound power level	$L_{WA} = 89.4 \text{ dB(A)}$
Uncertainty	$K_{WA} = 3.0 \text{ dB}$

**For assembling with battery-driven power head (below values are measured with R36LTR20 power head)**

Rated voltage	36 V d.c.
No-load speed	
High speed	200 $\text{min}^{-1}$
Low speed	170 $\text{min}^{-1}$
Weight (without battery pack)	8.14 kg
Weight (with the heaviest battery pack)	10.9 kg

Vibration level (in accordance with IEC 62841-1)	
Front handle	$a_h = 0.9 \text{ m/s}^2$
Rear handle	$a_h = 2.3 \text{ m/s}^2$
Uncertainty	$K_h = 1.5 \text{ m/s}^2$

Noise emission level (in accordance with IEC 62841-1)	
A-weighted sound pressure level at the operator position	$L_{PA} = 78.5 \text{ dB(A)}$
Uncertainty	$K_{PA} = 3.0 \text{ dB}$
A-weighted sound power level	$L_{WA} = 86.9 \text{ dB(A)}$
Uncertainty	$K_{WA} = 3.0 \text{ dB}$

**⚠ WARNING!** The declared vibration total values and the declared noise emission values given in this instruction manual have been measured in accordance with a standardised test and may be used to compare one tool with another. They may be used for a preliminary assessment of exposure.

The declared vibration and noise emission values represent the main applications of the tool. However, if the tool is used for different applications, used with different accessories, or poorly maintained, the vibration and noise emission may differ. These conditions may significantly increase the exposure levels over the total working period. An estimation of the level of exposure to vibration and noise should take into account the times when the tool is turned off or when it is running idle. These conditions may significantly reduce the exposure level over the total working period.

Identify additional safety measures to protect the operator from the effects of vibration and noise, such as maintaining the tool and the accessories, keeping the hands warm (in case of vibration), and organising work patterns.

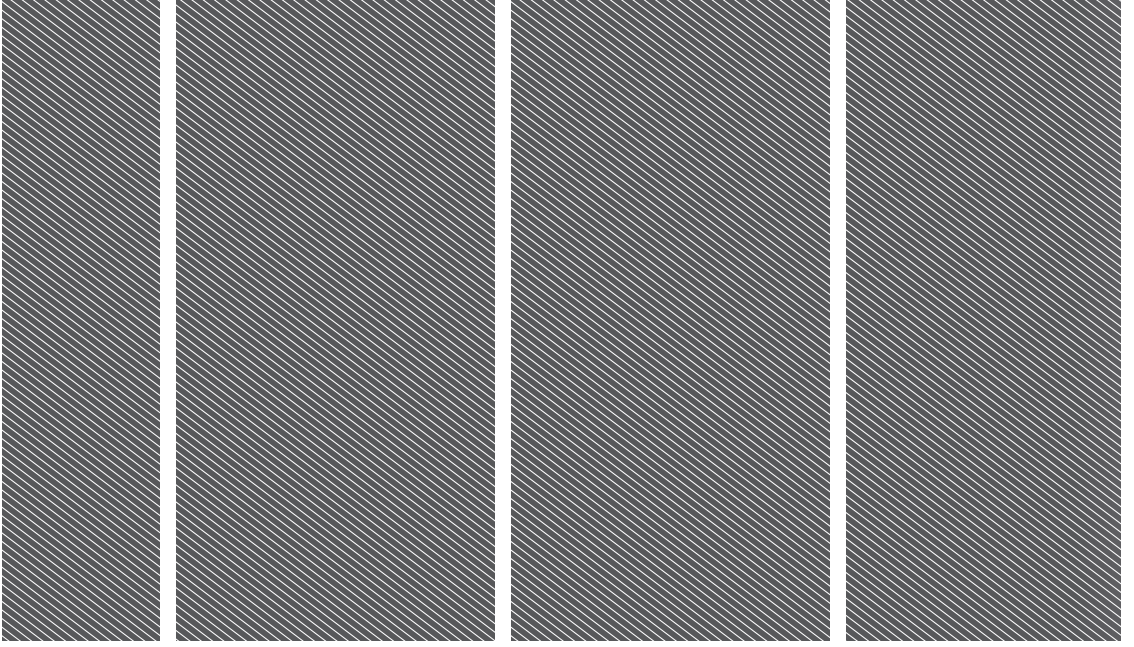
**DISCLAIMER - Techtronic**

Exposure to silica and other dust conditions can be a health risk. Organisations have legal responsibilities to protect the health of their workers. Techtronic Industries Australia Pty Ltd, (ACN 002 277 509) (TECHTRONIC) considers the safety of all users of our products to be of paramount importance. It is recommended that all users of TECHTRONIC products wear the correct personal protective equipment and clothing, and use the appropriate dust extractor, including on-tool extraction, and otherwise follow all recommended dust suppression practices. It is the responsibility of the purchasing customer to ensure that any dust extractor is suitable for the task and type of dust being collected. TECHTRONIC does not, and will not, recommend a dust extractor to customers. TECHTRONIC recommends a risk assessment be carried out by the purchasing customer, or an independent third party specialist, to ensure any dust extractor is fit for the purpose intended by the customer before they make a purchase. TECHTRONIC recommends the customer use all products and equipment strictly in accordance with the user manual or instructions provided, and the customer ensures all personal protective equipment and clothing, and dust extractors, are fitted properly. All brochures, catalogues, descriptions, photos and other promotional materials are to be treated as illustrative only and are not intended to amount to advice or recommendations on which a customer can or should rely. In no event will TECHTRONIC be liable for any loss or damage as a result of a customer using a TECHTRONIC product for which dust is a byproduct or using a TECHTRONIC dust extractor that is selected by the customer.









Imported by:

**Techtronic Industries Australia Pty Ltd**

31 Gilby Road, Mount Waverley, VIC 3149

Melbourne, Australia

**Techtronic Industries N.Z. Limited**

Unit C, 70 Business Parade South,

Highbrook, Auckland 2013, New Zealand

*RYOBI is a trade mark of Ryobi Limited, and is used under license.*

961478318-01

