

RC18240



## IMPORTANT!

It is essential that you read the instructions in this manual before assembling, operating, and maintaining the product. Subject to technical modifications.

Safety, performance, and dependability have been given top priority in the design of your charger.

## INTENDED USE

This charger is only intended to charge RYOBI ONE+ Lithium-Ion battery packs listed in this manual.

The product is only for use indoors in dry conditions.

The product is not intended to charge any other type of battery, to be used as a power supply, or for any other purpose. It should never be used in explosive or inflammable environments.

## CHARGER SAFETY WARNINGS

Please read and observe these instructions before using the product. Failure to follow these instructions and warnings increases the risk of electric shock, fire and explosion.

**⚠ WARNING!** Do not charge non-rechargeable batteries with the charger.

**⚠ WARNING!** Mains voltage must correspond with the voltage specifications on the product.

- This appliance is not intended to be used or cleaned by persons with reduced physical, sensory or mental capabilities, or lack of experience or knowledge, unless they have been given instructions concerning the safe use of the appliance by a person legally responsible for their safety. They should be supervised whilst using the appliance. Children shall not use, clean or play with this appliance, which when not in use should be secured out of their reach.
- Before using the product, check that the product enclosure, cable and adaptor plug are not damaged. If damage is found, do not use and follow instruction in the maintenance section of this manual.
- The product must not be damp, and should never be used in a damp environment.
- The product is for indoor use only.
- Do not use the product if it has suffered any heavy shock or jolting, or is damaged in any other way.
- Do not conduct charging in a position which may become exposed to sunlight or other heat source.
- Due to the heat generated during charging, the product should not be operated on a combustible surface.
- Do not conduct charging operations in the vicinity of flammable materials. Example: Cloth, packaging materials, paint, spray paint or aerosols, lubricant, thinners, petrol containers, gas containers or gas appliances.
- Do not cover any ventilating slots and provide adequate ventilation during operation.
- Never modify, disassemble or attempt to repair the product yourself.
- Do not allow the charger or batteries to become contaminated with any material which is conductive. Example: Metal particles from grinding, cutting or machining processes.
- Remove the plug of the product from the power socket when it is not in use or during cleaning.
- Only use extension cable that is approved and in good condition.
- Protect battery contacts to avoid a short circuit caused by metallic objects which could cause a fire or explosion!
- Do not charge batteries which show signs they have leaked electrolyte. Dispose of them properly.

- Never charge a damaged battery pack. If damaged, replace immediately.
- If the battery is not going to be used for a while, remove the charger plug from the power socket and take the battery off the product.

## ADDITIONAL BATTERY SAFETY WARNINGS

**⚠ WARNING!** To reduce the risk of fire, personal injury, and product damage due to a short circuit, never immerse your tool, battery pack or charger in fluid or allow a fluid to flow inside them. Corrosive or conductive fluids, such as seawater, certain industrial chemicals, and bleach or bleach-containing products, etc., can cause a short circuit.

## TRANSPORTING LITHIUM BATTERIES

Transport the battery in accordance with local and national provisions and regulations.

Follow all special requirements on packaging and labelling when transporting batteries by a third party. Ensure that no batteries can come in contact with other batteries or conductive materials while in transport by protecting exposed connectors with insulating, non-conductive caps or tape. Do not transport batteries that are cracked or leaking. Check with the forwarding company for further advice.

## OPERATION

### CHARGING THE BATTERY PACK

Battery packs are shipped in a low charge condition to prevent possible problems. Therefore, you should charge them before first use. If the charger does not charge your battery pack under normal circumstances, return both the battery pack and charger to your nearest authorised service center for electrical check.

Do not charge nickel cadmium (NiCd) battery packs.

Make sure the power supply is normal household voltage, 220 V – 240 V, 50 Hz 105 W, AC only.

**NOTE:** When two battery packs are connected to the charger, they are charged at the same time. The charging current is equally distributed to the charging ports.

**NOTE:** After charging is complete, the green LED will remain on until the battery pack is removed from the charger or charger is disconnected from the power supply.

The battery pack will become slightly warm to the touch while charging. This is normal and does not indicate a problem.

Do not place the charger and battery pack in an area of extreme heat or cold. They will work best at normal room temperature.

**NOTE:** The charger and battery pack should be placed in a location where the temperature is more than 10°C but less than 38°C.

**NOTE:** Remove the batteries from the charger and disconnect the charger once charging is complete.

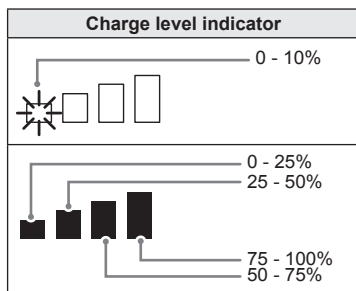
Do not place the charger near moist or damp areas.

### CHARGING A HOT BATTERY PACK

When using a tool continuously, the batteries in the battery pack will become hot. You should let a hot battery pack cool down for approximately 30 minutes before attempting to recharge it.

## CHARGE STATUS

To display the amount of charge left in the battery, press the Charge level indicator button.



## MAINTENANCE

- If the supply cord is damaged, it must be replaced by the manufacturer, its service agent or similarly qualified persons in order to avoid a hazard.
- Remove the plug of the product from the power socket when it is not in use or when cleaning it.
- Avoid using solvents when cleaning plastic parts. Most plastics are susceptible to various types of commercial solvents and may be damaged by their use. Use clean cloth or soft brush to remove dirt, dust, etc.
- Do not at any time let brake fluids, gasoline, petroleum-based products, penetrating oils, etc., come in contact with plastic parts. They contain chemicals that can damage, weaken or destroy plastic.

**⚠ WARNING!** Hazardous voltages are present within this product; do not disassemble.

- There are no user service or replacement parts inside this product. In case of damage or failure please return to your authorised RYOBI service centre for professional repair.

## STORAGE

- Store your charger in a cool dry place between 10 and 25°C.
- It is not recommended to leave the product in a vehicle during hot or cold conditions. Ensure no metal filings or swarf can fall into the vents during storage, as this may cause serious injury when the product is next used.

## SYMBOLS ON THE PRODUCT

V

Volts



Direct current



Regulatory Compliance Mark (RCM). Product meets applicable regulatory requirements.



Class II equipment



Please read the instructions carefully before starting the machine.



For indoor use only.

T3.15A



Time-lag fuse 3.15A

Do not dispose of waste electrical and electronic equipment as unsorted municipal waste.

Waste electrical and electronic equipment must be collected separately.

Waste light sources have to be removed from the equipment.

Check with your local authority or retailer for recycling advice and collection point.

According to local regulations, retailers may have an obligation to take back waste electrical and electronic equipment free of charge.

Your contribution to the reuse and recycling of waste electrical and electronic equipment helps to reduce the demand of raw materials.

Waste electrical and electronic equipment contain valuable and recyclable materials, which can adversely impact the environment and the human health if not disposed of in an environmentally compatible manner.

Delete personal data from waste equipment, if any.



## SYMBOLS IN THIS MANUAL



Safety alert



Note



Parts or accessories sold separately



Connect to the power supply.








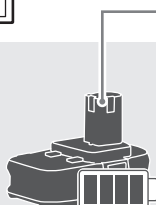
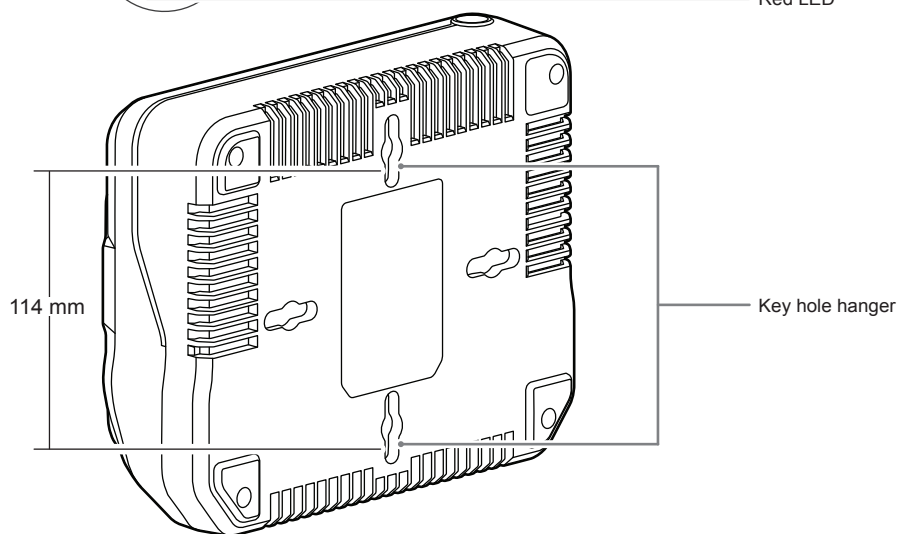
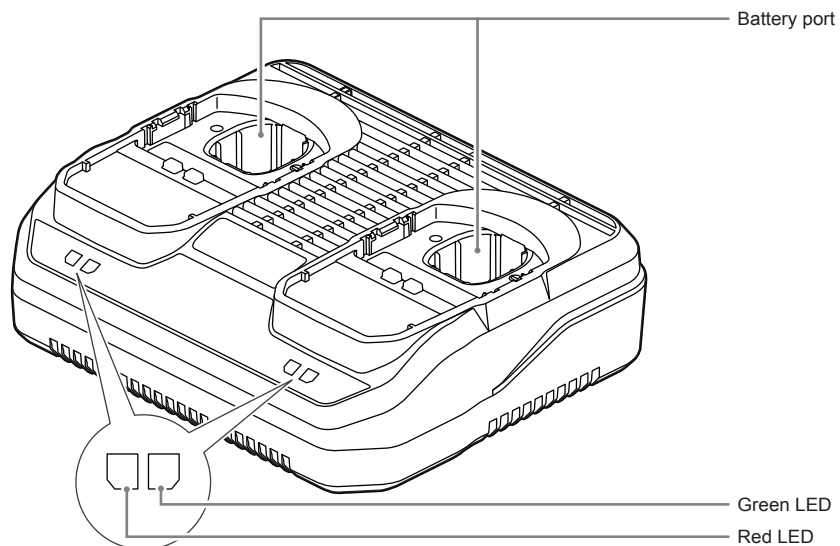
Disconnect to the power supply.

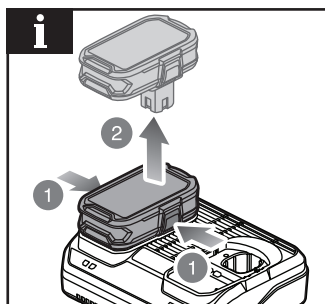
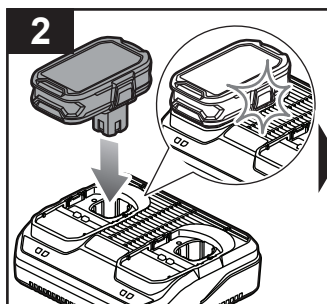
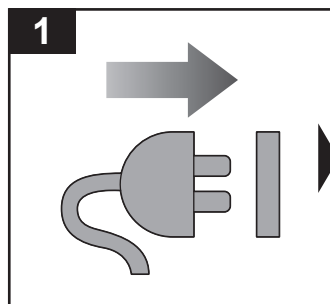
## COMPATIBLE BATTERY PACKS

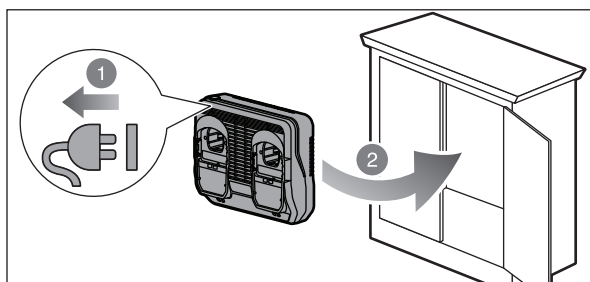
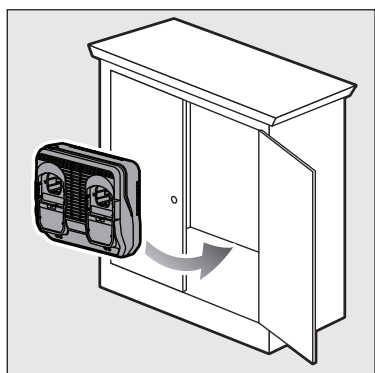
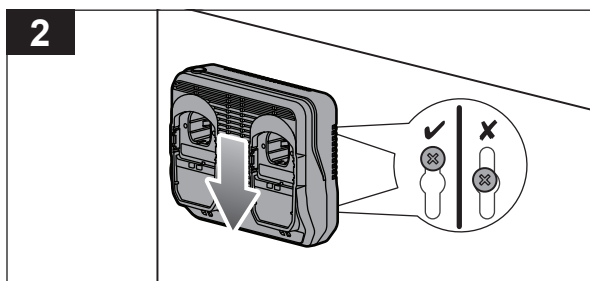
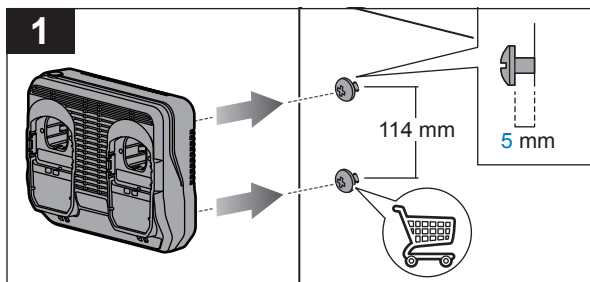
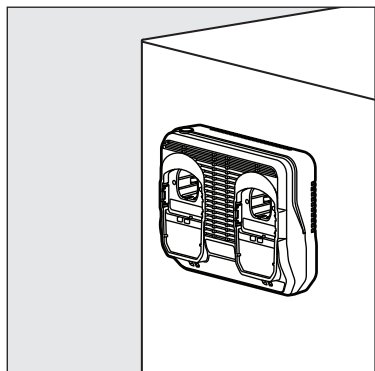
Battery Pack	Voltage	Charger Input	Battery type	Battery Capacity	Number of Cell for Battery
RB18L15	18 V ===	220 - 240V ~ 50 Hz	Lithium-Ion	1.5 Ah	5
RB18L15A				1.5 Ah	5
RB18L15B				1.5 Ah	5
RB18L20				2.0 Ah	5
RB18L20A				2.0 Ah	5
RB18L25				2.5 Ah	5
RB18L25A				2.5 Ah	5
RB18L40				4.0 Ah	10
RB18L40A				4.0 Ah	10
RB18L50				5.0 Ah	10
RB18L50A				5.0 Ah	10
RB18L60A				6.0 Ah	10
RB1860X				6.0 Ah	10
RB18L90A				9.0 Ah	15

## CHARGER LED FUNCTIONS

LED indicator		Battery pack status	Red LED	Green LED	Action
	Evaluate	Hot battery pack	Flashing	OFF	When battery pack reaches cooled temperature, charger begins fast charge mode.
	Evaluate	Cold battery pack	Flashing	OFF	When battery pack reaches warmed temperature, charger begins fast charge mode.
	Defective	Defective	Flashing	Flashing	Battery pack or charger is defective.
					<ul style="list-style-type: none"> <li>• If defective, try to repeat the conditions a second time by removing and reinstalling the battery pack. If the LED status repeats a second time, try charging a different battery.</li> <li>• If a different battery charges normally, dispose of the defective pack (see Maintenance section).</li> <li>• If a different battery also indicates "Defective," the charger may be defective.</li> </ul>
	Charging	Fast charging	OFF	Flashing	Battery pack is being charged.
	Charging	Taper charging	OFF	Fading	Battery pack is being charged at lower rate.
	Full	Fully charged	OFF	ON	Charging is complete.








## PRODUCT SPECIFICATIONS

### Charger

Model	RC18240
-------	---------

### Charger

Input	220 - 240V ~ 50 Hz
-------	--------------------

Output	18 V 
--------	--

Input power	105 W max.
-------------	------------

Charger output current	4 A max.
------------------------	----------

Weight - excluding battery pack	0.83 kg
---------------------------------	---------

### Battery Pack

Voltage	18 V 
---------	--

Battery type	Lithium-Ion
--------------	-------------

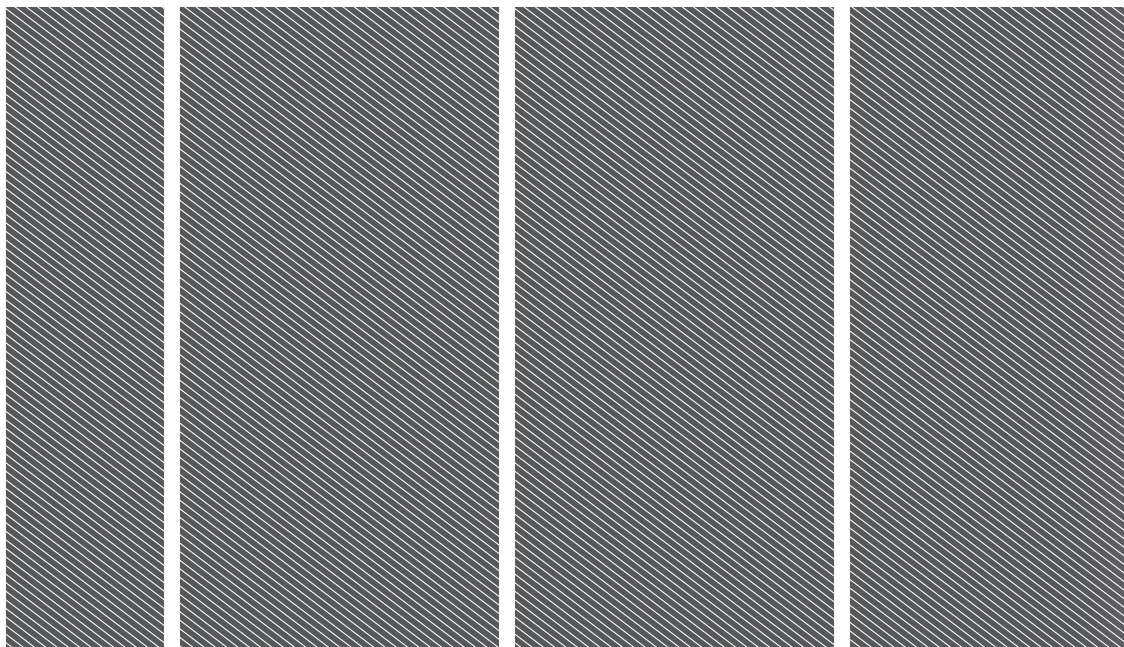
Operating temperature	5°C - 40°C
-----------------------	------------











Imported by:  
**Techtronic Industries Australia Pty Ltd**  
31 Gilby Road, Mount Waverley, VIC 3149  
Melbourne, Australia

**Techtronic Industries N.Z. Limited**  
Unit C, 70 Business Parade South,  
Highbrook, Auckland 2013, New Zealand

*RYOBI is a trade mark of Ryobi Limited, and is used under license.*

961014510-01

