

R18PHT130



IMPORTANT!

It is essential that you read the instructions in this manual before assembling, operating, and maintaining the product.

Subject to technical modification.

Safety, performance, and dependability have been given top priority in the design of your cordless pole hedge trimmer.

INTENDED USE

The cordless pole hedge trimmer is intended only for outdoor use in dry and well-illuminated conditions.

The product is designed for home or domestic use. The product is intended to cut and trim hedges, shrubs, and similar vegetation. The product is not intended for cutting hedges, shrubs, and similar vegetation with diameters greater than its cutting capacity.

Do not use the product for any other purpose.

GENERAL PRODUCT SAFETY WARNINGS

⚠ WARNING! Read all safety warnings, instructions, illustrations and specifications provided with this power tool. Failure to follow all instructions listed below may result in electric shock, fire and/or serious injury.

Save all warnings and instruction for future reference.

The term "power tool" in the warnings refers to your mains-operated (corded) product or battery-operated (cordless) product.

WORK AREA SAFETY

- **Keep work area clean and well lit.** Cluttered or dark areas invite accidents.
- **Do not operate power tools in explosive atmospheres, such as in the presence of flammable liquids, gases or dust.** Power tools create sparks which may ignite the dust or fumes.
- **Keep children and bystanders away while operating a power tool.** Distractions can cause you to lose control.

ELECTRICAL SAFETY

- **Power tool plugs must match the outlet. Never modify the plug in any way. Do not use any adapter plugs with earthed (grounded) power tools.** Unmodified plugs and matching outlets will reduce risk of electric shock.
- **Avoid body contact with earthed or grounded surfaces, such as pipes, radiators, ranges and refrigerators.** There is an increased risk of electric shock if your body is earthed or grounded.
- **Do not expose power tools to rain or wet conditions.** Water entering a power tool will increase the risk of electric shock.
- **Do not abuse the cord. Never use the cord for carrying, pulling or unplugging the power tool. Keep cord away from heat, oil, sharp edges or moving parts.** Damaged or entangled cords increase the risk of electric shock.

- **When operating a power tool outdoors, use an extension cord suitable for outdoor use.** Use of a cord suitable for outdoor use reduces the risk of electric shock.
- **If operating a power tool in a damp location is unavoidable, use a residual current device (RCD) protected supply.** Use of an RCD reduces the risk of electric shock.

PERSONAL SAFETY

- **Stay alert, watch what you are doing and use common sense when operating a power tool. Do not use a power tool while you are tired or under the influence of drugs, alcohol or medication.** A moment of inattention while operating power tools may result in serious personal injury.
- **Use personal protective equipment. Always wear eye protection.** Protective equipment such as a dust mask, non-skid safety shoes, hard hat or hearing protection used for appropriate conditions will reduce personal injuries.
- **Prevent unintentional starting. Ensure the switch is in the off-position before connecting to power source and/or battery pack, picking up or carrying the tool.** Carrying power tools with your finger on the switch or energising power tools that have the switch on invites accidents.
- **Remove any adjusting key or wrench before turning the power tool on.** A wrench or a key left attached to a rotating part of the power tool may result in personal injury.
- **Do not overreach. Keep proper footing and balance at all times.** This enables better control of the power tool in unexpected situations.
- **Dress properly. Do not wear loose clothing or jewellery. Keep your hair and clothing away from moving parts.** Loose clothes, jewellery or long hair can be caught in moving parts.
- **If devices are provided for the connection of dust extraction and collection facilities, ensure these are connected and properly used.** Use of dust collection can reduce dust-related hazards.
- **Do not let familiarity gained from frequent use of tools allow you to become complacent and ignore tool safety principles.** A careless action can cause severe injury within a fraction of a second.

POWER TOOL USE AND CARE

- **Do not force the power tool. Use the correct power tool for your application.** The correct power tool will do the job better and safer at the rate for which it was designed.
- **Do not use the power tool if the switch does not turn it on and off.** Any power tool that cannot be controlled with the switch is dangerous and must be repaired.
- **Disconnect the plug from the power source and/or remove the battery pack, if detachable, from the power tool before making any adjustments, changing accessories, or storing power tools.** Such preventive safety measures reduce the risk of starting the power tool accidentally.
- **Store idle power tools out of the reach of children and do not allow persons unfamiliar with the power**

tool or these instructions to operate the power tool.

Power tools are dangerous in the hands of untrained users.

- **Maintain power tools and accessories. Check for misalignment or binding of moving parts, breakage of parts and any other condition that may affect the power tool's operation. If damaged, have the power tool repaired before use.** Many accidents are caused by poorly maintained power tools.
- **Keep cutting tools sharp and clean.** Properly maintained cutting tools with sharp cutting edges are less likely to bind and are easier to control.
- **Use the power tool, accessories and tool bits etc. in accordance with these instructions, taking into account the working conditions and the work to be performed.** Use of the power tool for operations different from those intended could result in a hazardous situation.
- **Keep handles and grasping surfaces dry, clean and free from oil and grease.** Slippery handles and grasping surfaces do not allow for safe handling and control of the tool in unexpected situations.

BATTERY TOOL USE AND CARE

- **Recharge only with the charger specified by the manufacturer.** A charger that is suitable for one type of battery pack may create a risk of fire when used with another battery pack.
- **Use power tools only with specifically designated battery packs.** Use of any other battery packs may create a risk of injury and fire.
- **When battery pack is not in use, keep it away from other metal objects, like paper clips, coins, keys, nails, screws or other small metal objects, that can make a connection from one terminal to another.** Shorting the battery terminals together may cause burns or a fire.
- **Under abusive conditions, liquid may be ejected from the battery; avoid contact. If contact accidentally occurs, flush with water. If liquid contacts eyes, additionally seek medical help.** Liquid ejected from the battery may cause irritation or burns.
- **Do not use a battery pack or tool that is damaged or modified.** Damaged or modified batteries may exhibit unpredictable behaviour resulting in fire, explosion or risk of injury.
- **Do not expose a battery pack or tool to fire or excessive temperature.** Exposure to fire or temperature above 130 °C may cause explosion.
- **Follow all charging instructions and do not charge the battery pack or tool outside the temperature range specified in the instructions.** Charging improperly or at temperatures outside the specified range may damage the battery and increase the risk of fire.

SERVICE

- **Have your power tool serviced by a qualified repair person using only identical replacement parts.** This will ensure that the safety of the power tool is maintained.
- **Never service damaged battery packs.** Service of battery packs should only be performed by the manufacturer or authorized service providers.

POLE HEDGE TRIMMER SAFETY WARNINGS

- **Do not use the hedge trimmer in bad weather conditions, especially when there is a risk of lightning.** This decreases the risk of being struck by lightning.
- **Keep all power cords and cables away from cutting area.** Power cords or cables may be hidden in hedges or bushes and can be accidentally cut by the blade.
- **Wear ear protection.** Adequate protective equipment will reduce the risk of hearing loss.
- **Hold the hedge trimmer by insulated gripping surfaces only, because the blade may contact hidden wiring or its own cord.** Blades contacting a "live" wire may make exposed metal parts of the hedge trimmer "live" and could give the operator an electric shock.
- **Keep all parts of the body away from the blade. Do not remove cut material or hold material to be cut when blades are moving.** Blades continue to move after the switch is turned off. A moment of inattention while operating the hedge trimmer may result in serious personal injury.
- **When clearing jammed material or servicing the hedge trimmer, make sure all power switches are off and the battery pack is removed or disconnected.** Unexpected actuation of the hedge trimmer while clearing jammed material or servicing may result in serious personal injury.
- **Carry the hedge trimmer by the handle with the blade stopped and taking care not to operate any power switch.** Proper carrying of the hedge trimmer will decrease the risk of inadvertent starting and resultant personal injury from the blades.
- **When transporting or storing the hedge trimmer, always use the blade cover.** Proper handling of the hedge trimmer will decrease the risk of personal injury from the blades.
- **Always use head protection when operating the pole hedge trimmer overhead.** Falling debris can result in serious personal injury.
- **Always use two hands when operating the pole hedge trimmer.** Hold the pole hedge trimmer with both hands to avoid loss of control.
- **To reduce the risk of electrocution, never use the pole hedge trimmer near any electrical power lines.** Contact with or use near power lines may cause serious injury or electric shock resulting in death.

ADDITIONAL SAFETY WARNINGS

- Check the hedges and bushes for foreign objects, such as wire fences and hidden wiring.
- While operating the product, always hold it firmly with both hands by the two handles.
- Use the product only at ground level and not on any other unstable support.
- Inspect the product before each use. Check for the correct operation of all controls. Check for loose fasteners, etc. Make sure that all guards and handles are properly and securely attached. Replace any damaged parts before use. Check for battery pack leaks.
- Do not operate the product in poor lighting. Use the product only in daylight or with good artificial light. The

operator requires a clear view of the work area to identify potential hazards.

- The use of hearing protection reduces the ability to hear warnings (shouts or alarms). Pay particular attention to potential hazards around and inside the working area. Do not get distracted and always concentrate on the task.
- To reduce the risk of injury associated with contacting moving parts, always power off the product and remove the battery pack. Allow both to cool down. Make sure that all moving parts have come to a complete stop:
 - before adjusting the working position of the cutting means
 - before servicing
 - before clearing a blockage
 - before checking, cleaning, or working on the product
 - before changing accessories
 - before leaving the product unattended
 - before checking for damage after striking a foreign object
 - before performing maintenance
 - whenever the product starts to vibrate abnormally
- Do not force the product through heavy shrubbery. This can cause the blades to bind and slow down. If the blades slow down, reduce the pace.
- If the product is dropped, suffers heavy impact, or begins to vibrate abnormally, immediately power off the product and inspect it for damage or identify the cause of the vibration. For any damage, contact customer service.
- Do not wear multiple belt or shoulder harnesses.
- Operate the product only in temperatures between 0 °C and 40 °C.
- Store the product in a location where the ambient temperature is between 0 °C and 40 °C.
- Injuries may be caused, or aggravated, by prolonged use of the product. When using the product for prolonged periods, ensure to take regular breaks.

ADDITIONAL BATTERY SAFETY WARNINGS

- To reduce the risk of fire, personal injury, and product damage due to a short circuit, never immerse the product, battery pack, or charger in fluid or allow fluid to flow inside them. Corrosive or conductive fluids, such as seawater, certain industrial chemicals, and bleach or bleach-containing products, etc., can cause a short circuit.
- Charge the battery pack in a location where the ambient temperature is between 10 °C and 38 °C.
- Store the battery pack in a location where the ambient temperature is between 0 °C and 20 °C.
- Use the battery pack in a location where the ambient temperature is between 0 °C and 40 °C.

TRANSPORTATION AND STORAGE

- Power off the product, and remove the battery pack. Make sure that all moving parts have come to a complete stop. Allow the product and the battery pack to cool down before storing or transporting.
- Remove all foreign materials from the product. Do not store or transport the product with the battery pack fitted. Remove the battery pack, and secure it separately.

Store the product in a cool, dry, and well-ventilated place that is inaccessible to children. Keep the product away from corrosive agents, such as garden chemicals and de-icing salts. Do not store the product outdoors.

- Fit the blade cover before storing the product or during transportation.
- When transporting the product in a vehicle, secure it against movement or falling to prevent injury to persons or damage to the product.

TRANSPORTING LITHIUM BATTERIES

Transport the battery pack in accordance with local and national provisions and regulations.

Follow all special requirements on packaging and labelling when transporting batteries by a third party. Ensure that no batteries can come in contact with other batteries or conductive materials while in transport by protecting exposed connectors with insulating, non-conductive caps or tape. Do not transport batteries that are cracked or leaking. Check with the forwarding company for further advice.

MAINTENANCE

- Use only original manufacturer's replacement parts, accessories, and attachments. Failure to do so can cause possible injury, can contribute to poor performance, and may void your warranty.
- The blades are extremely sharp. To prevent personal injury, exercise extreme caution when cleaning, lubricating, fitting, or removing the blade cover.
- Power off the product, and remove the battery pack. Allow both to cool down. Make sure that all moving parts have come to a complete stop before any cleaning or maintenance task.
- You may make adjustments and repairs that are described in this manual. For other repairs, contact customer service.
- After each use, clean the plastic parts with a soft, dry cloth.
- After each use, remove the debris from the blades with a stiff brush, and then carefully apply a rust-preventative lubricant before refitting the blade cover. Use a rust-preventative lubricant spray to apply an even distribution and reduce the risk of personal injury from contact with the blades. For information about a suitable spray product, contact customer service.
- Check all nuts, bolts, and screws before each use and at frequent intervals for proper tightness to ensure that the product is in safe working condition. For any damage, contact customer service.

SYMBOLS ON THE PRODUCT



Safety alert



Read and understand all instructions before operating the product. Follow all warnings and safety instructions.



Wear eye, ear, and head protection.



Do not expose the product to rain or damp conditions.



To prevent serious injury, do not touch the cutting blades.



Wear non-slip, heavy-duty gloves.



Wear non-slip safety footwear when using the product.



Regulatory Compliance Mark (RCM). The product meets applicable regulatory requirements.



Keep sufficient distance away from electrical power lines.



Beware of thrown or flying objects. Keep all bystanders, especially children and pets, at least 15 m away from the operating area.



Guaranteed sound power level



Waste electrical products should not be disposed of with household waste. Please recycle where facilities exist. Check with your local authority or retailer for recycling advice.

SYMBOLS IN THIS MANUAL



Note



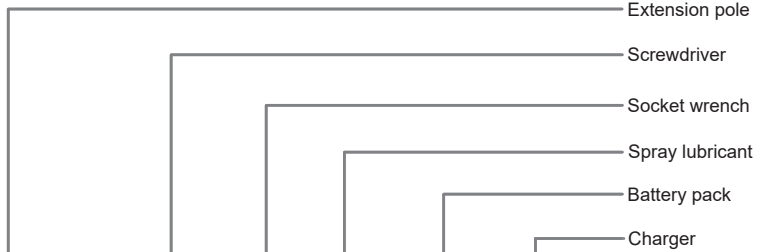
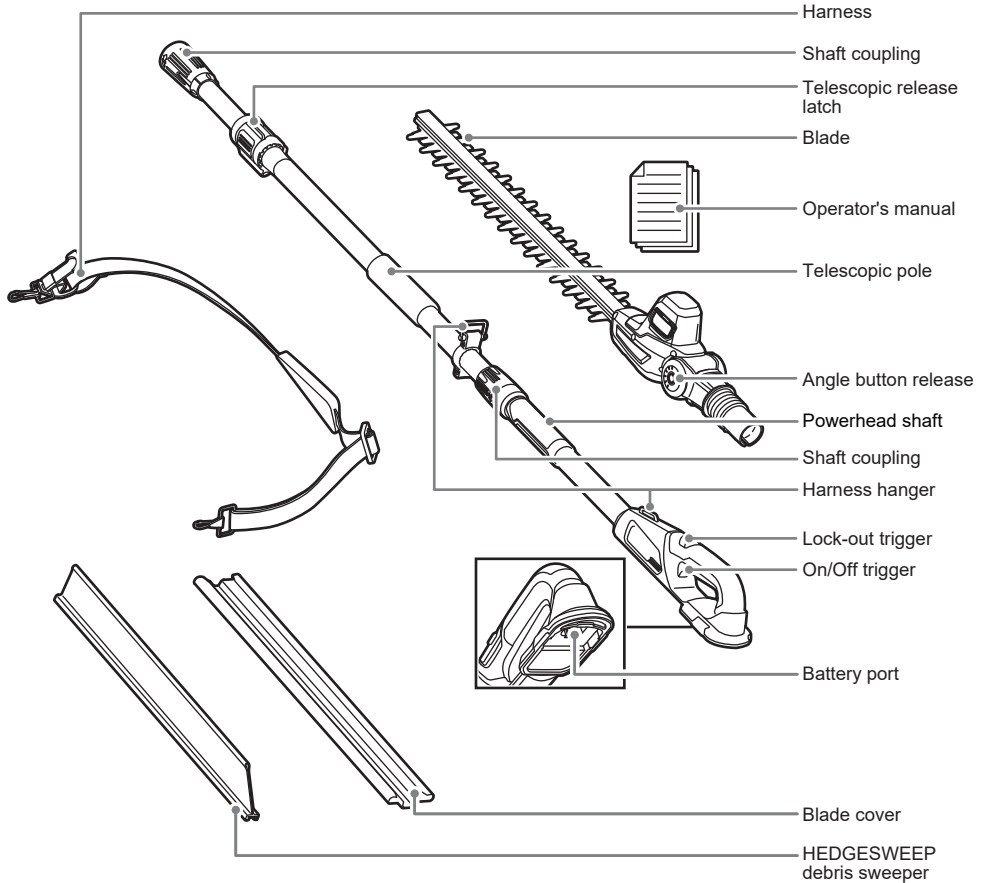
Warning

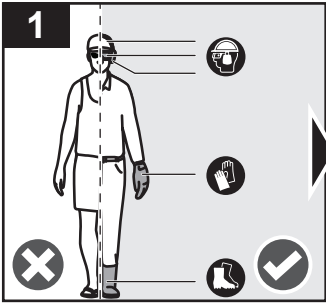


Parts or accessories sold separately

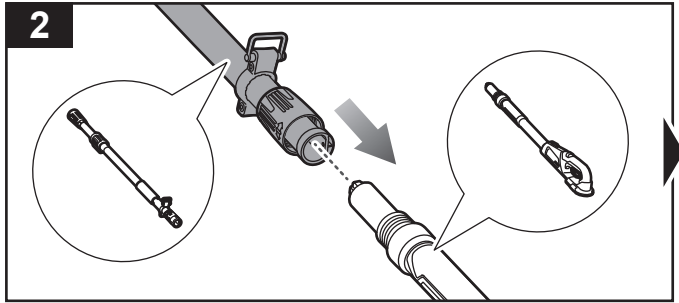


R18PHT130

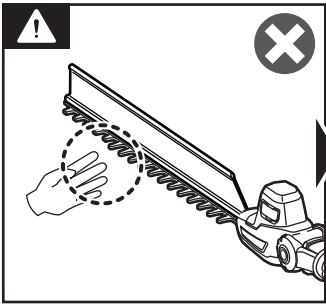




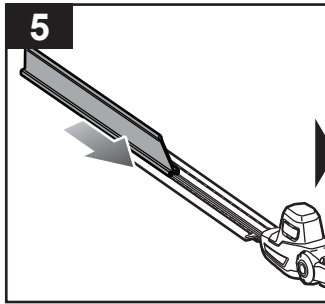
Always wear eye, ear, and head protection, non-slip, heavy-duty gloves, and non-slip safety footwear when using the product.



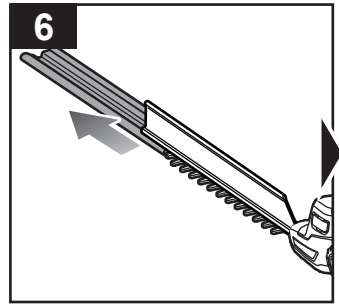
Connect the telescopic pole to the powerhead shaft.



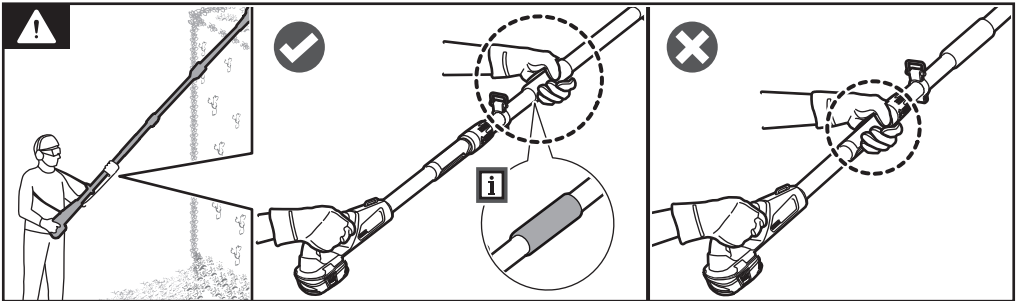
WARNING: Keep bare hands away from the blades at all times.



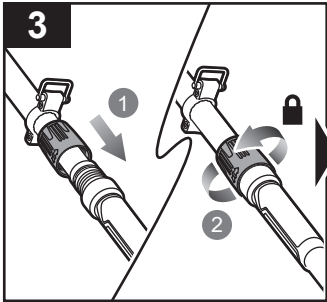
Slide the HEDGESWEEP debris sweeper over the blade.



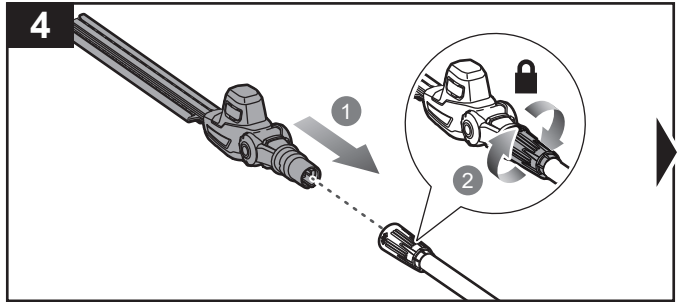
Remove the blade cover.



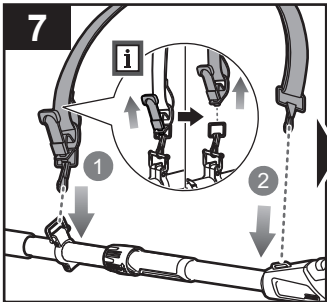
WARNING: Always use two hands to operate the product. Hold the product with one hand on the front handle and the other hand on the rear handle.



Slide the shaft coupling downwards and turn it counterclockwise to secure the connection.

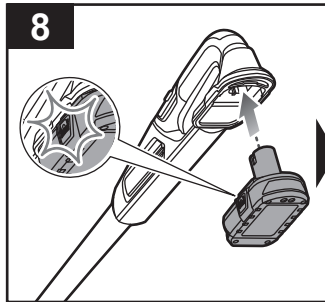


Connect the pole hedge trimmer attachment to the telescopic pole. Turn the shaft coupling clockwise to secure the connection.

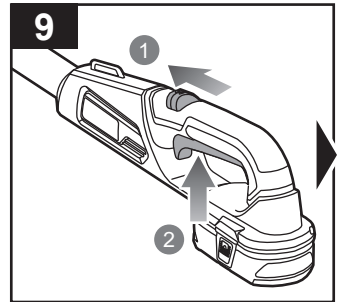


Attach the harness to the harness hangers.

NOTE: The harness has a quick-release mechanism. Practice using it before you start using the product. Its correct use may prevent serious injury in the case of an emergency.

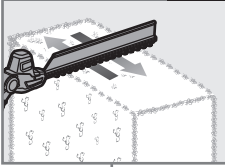


Insert the battery pack into the battery port until the latches click into place.

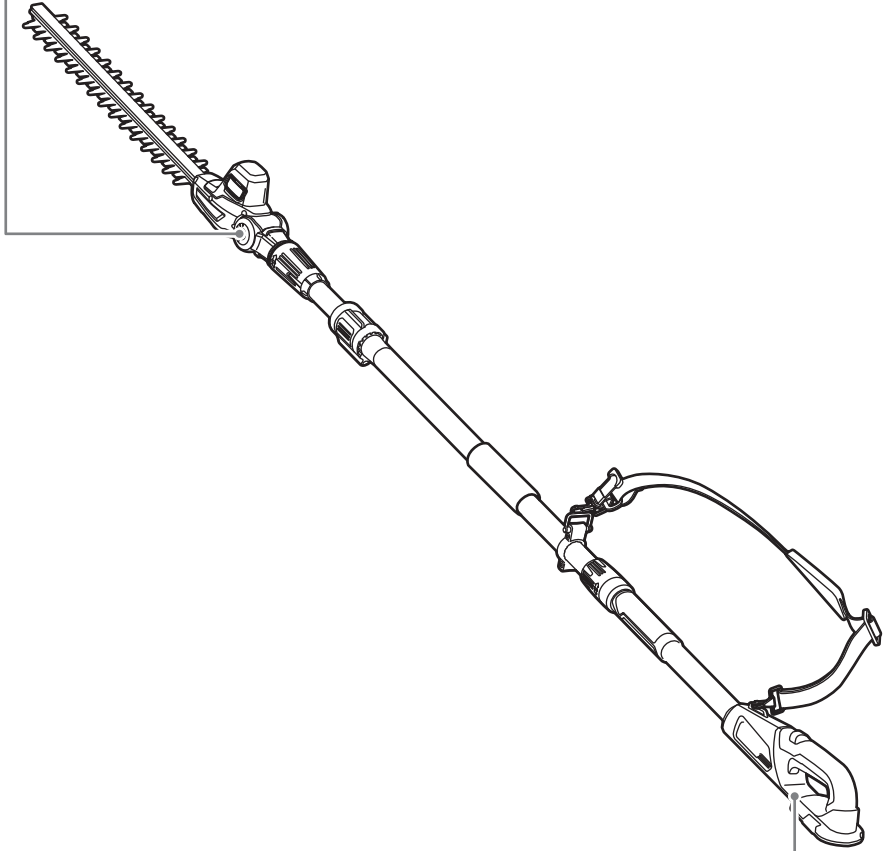
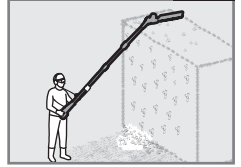


Slide the lock-out trigger forwards, and squeeze the on/off trigger to power on the product.

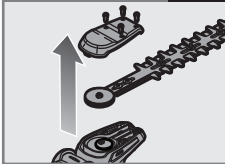
Operating the product p. 11



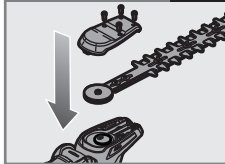
Installing the extension pole p.14



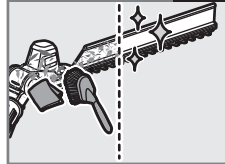
Removing the blade p. 16



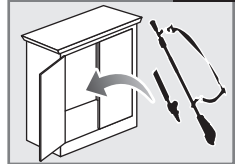
Installing the blade p. 18

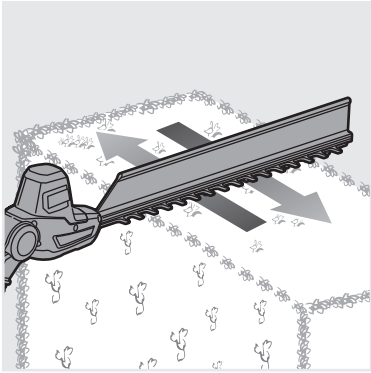


Cleaning the product p. 19



Storing the product p. 20





OPERATING THE PRODUCT

DANGER! Risk of electrocution! Do not operate within 10 m of overhead electrical lines.

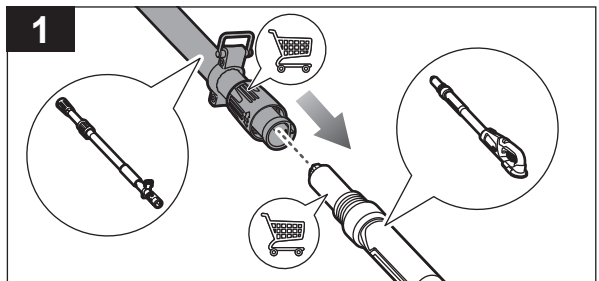
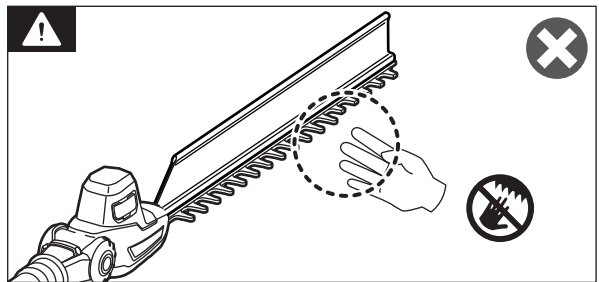
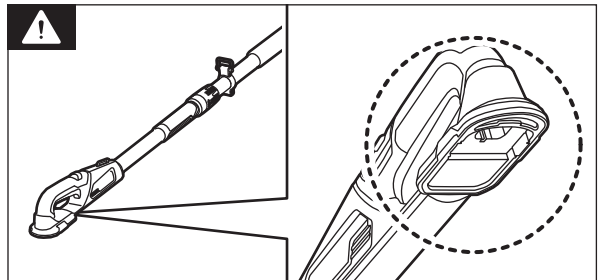
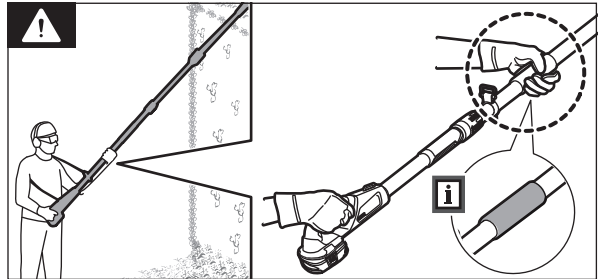
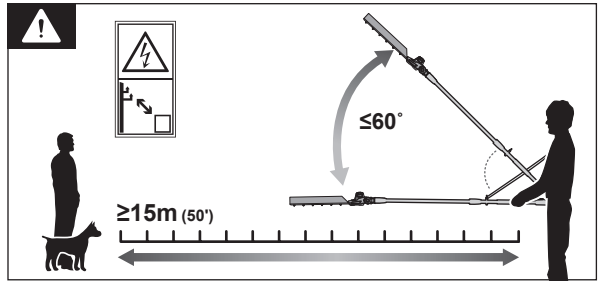
Position the product at an angle of 60° or less, depending on the specific situation. Keep bystanders at least 15 m away.

WARNING: Always use two hands to operate the product. Hold the product with one hand on the front handle and the other hand on the rear handle.

WARNING: Remove the battery pack before starting any work on the product.

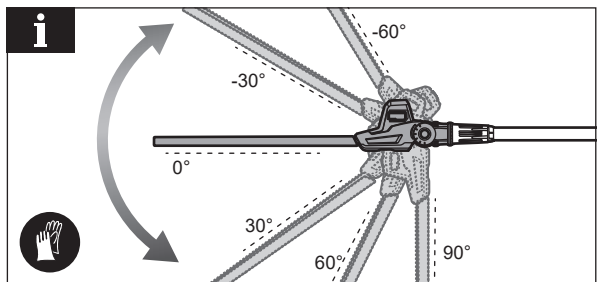
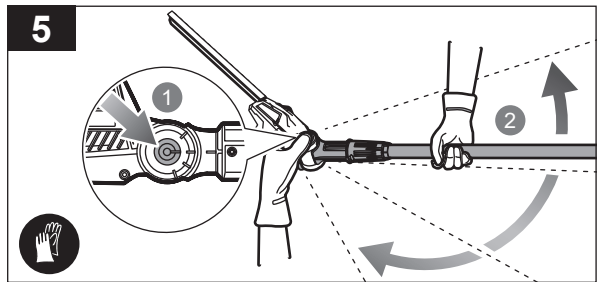
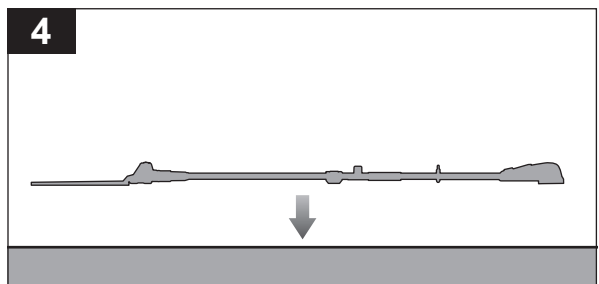
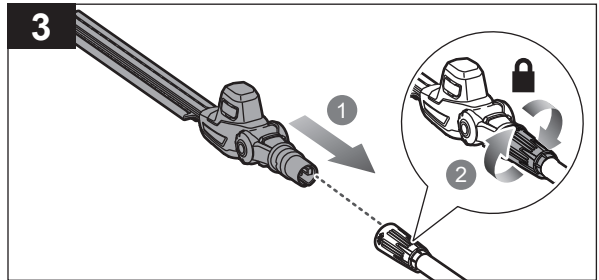
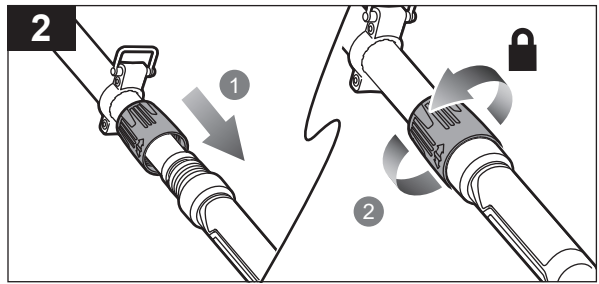
WARNING: Keep bare hands away from the blades at all times.

1. Connect the telescopic pole to the powerhead pole.



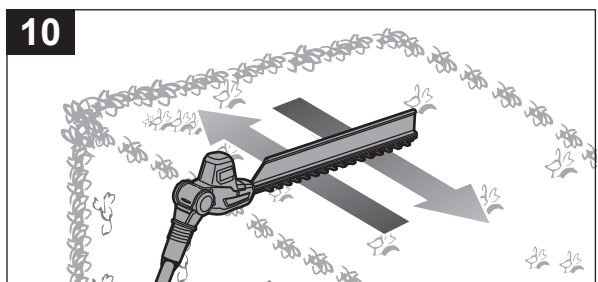
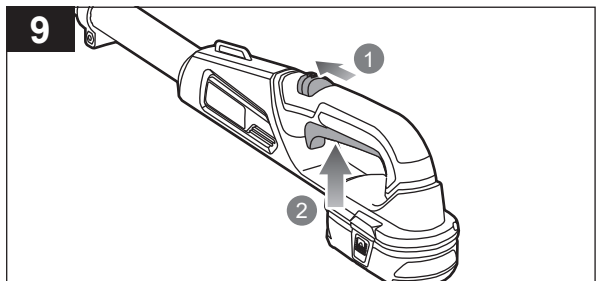
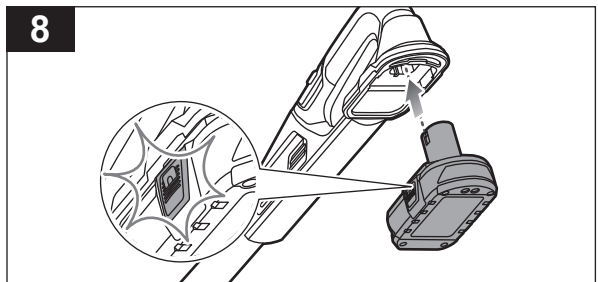
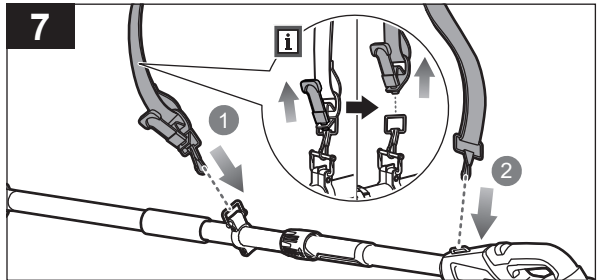
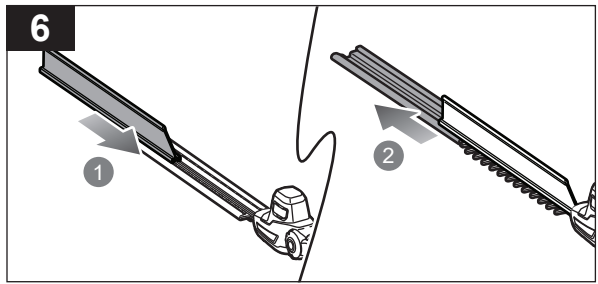
2. Slide the shaft coupling downwards and turn it counterclockwise to secure the connection.
3. Connect the hedge trimmer attachment to the telescopic pole.
4. Lay the product on the ground.
5. Press the angle button release and adjust the pole of the required working angle.

NOTE: The working angle of the pole hedge trimmer can be adjusted to -60° , -30° , 0° , 30° , 60° , and 90° .



6. Slide the HEDGESWEEP debris sweeper over the blade. Remove the blade cover.
7. Attach the harness to the harness hangers.

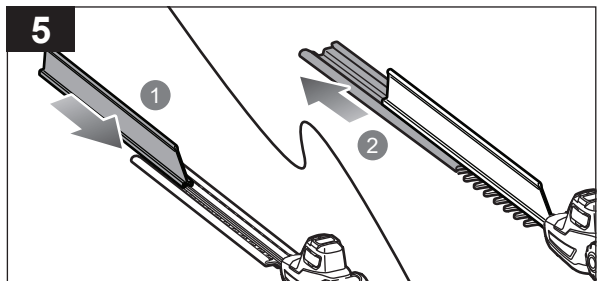
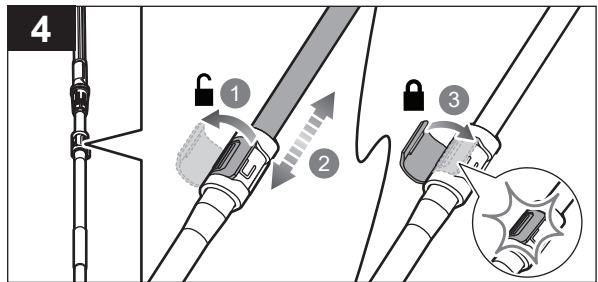
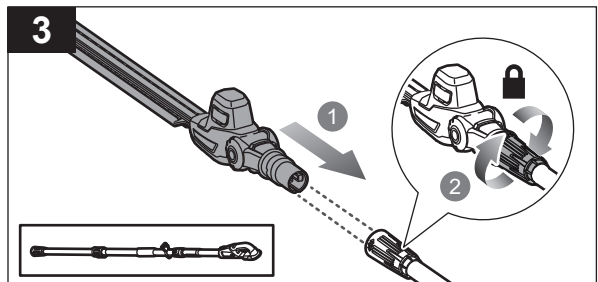
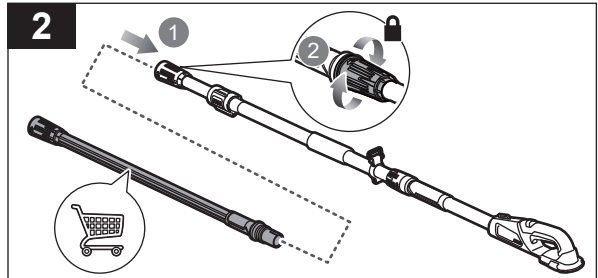
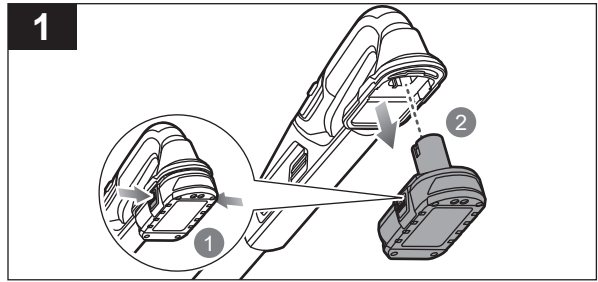
NOTE: The harness has a quick-release mechanism. Practice using it before you start using the product. Its correct use may prevent serious injury in the case of an emergency.
8. Insert the battery pack into the battery port until the latches click into place.
9. Slide the lock-out trigger forwards and squeeze the on/off trigger to turn on the product.
10. Trim the hedge from right to left.





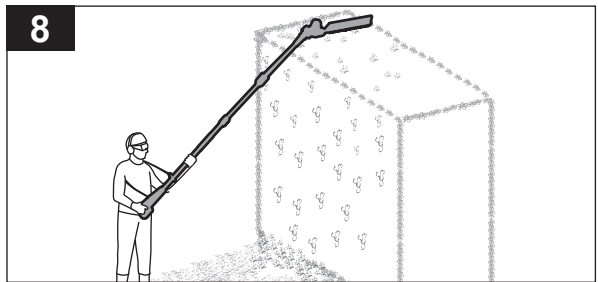
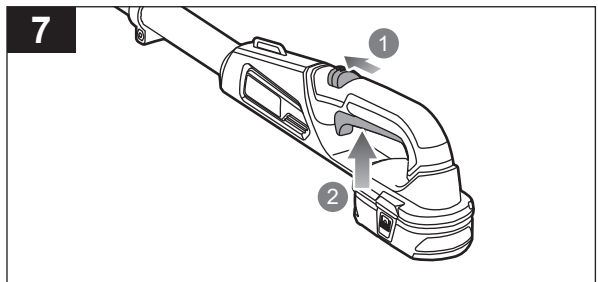
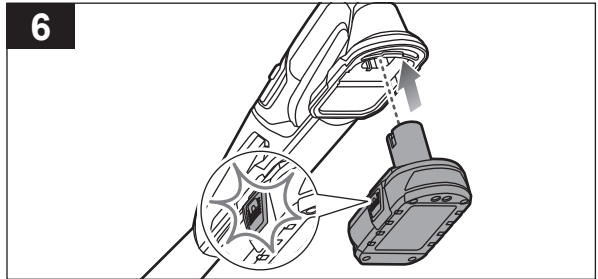
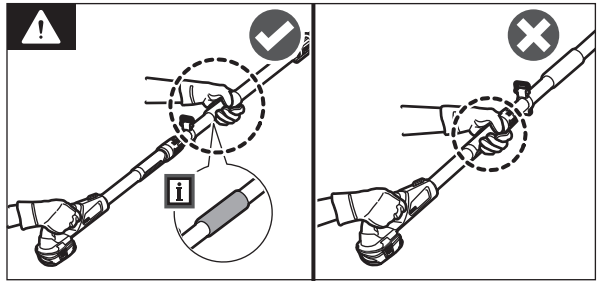
INSTALLING THE EXTENSION POLE

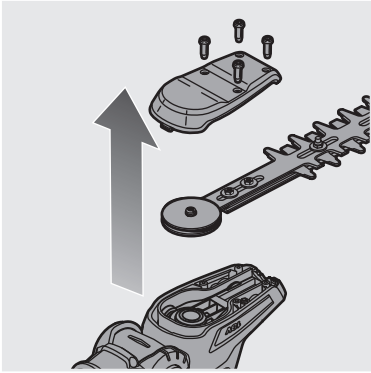
1. Press the latches and remove the battery pack from the battery port.
2. Connect the extension pole to the telescopic pole. Turn the shaft coupling clockwise to secure the connection.
WARNING: Do not use more than one extension pole at any time.
3. Insert the hedge trimmer attachment into the shaft coupling of the extension pole. Turn the shaft coupling clockwise to tighten.
4. Unlock the telescopic release latch. Adjust the pole length according to the required working height. Lock the telescopic release latch. Make sure that the latch clicks into place.
5. Slide the HEDGESWEEP debris sweeper over the blade and remove the blade cover.



WARNING: Always use two hands to operate the product. Hold the product with one hand on the front handle and the other hand on the rear handle.

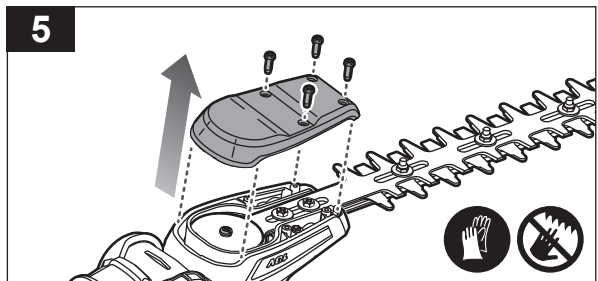
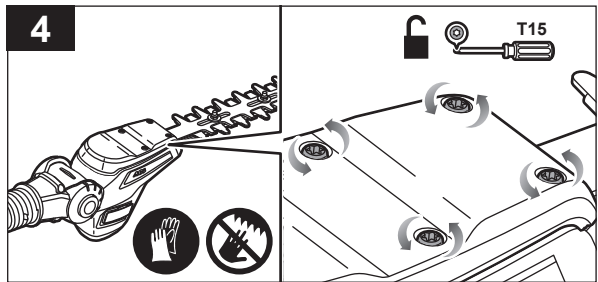
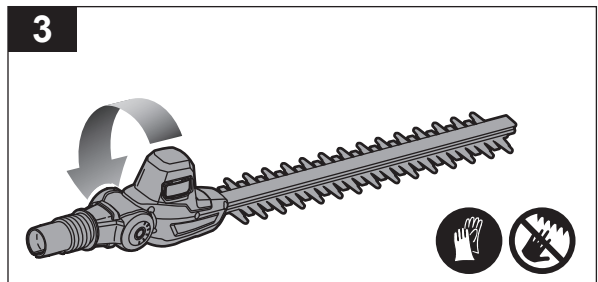
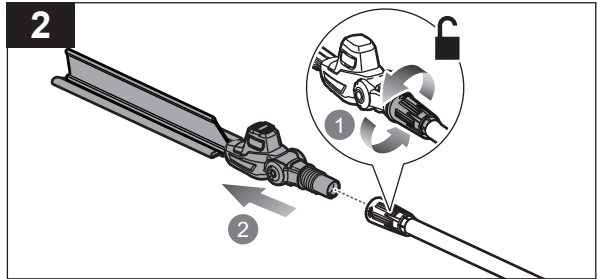
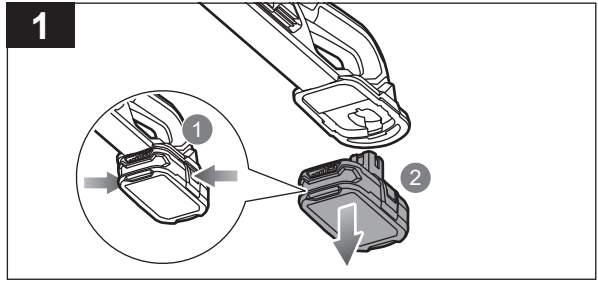
6. Insert the battery pack into the battery port until the latches click into place.
7. Slide the lock-out trigger forwards, and squeeze the on/off trigger to turn on the product.
8. Trim the hedge from right to left.



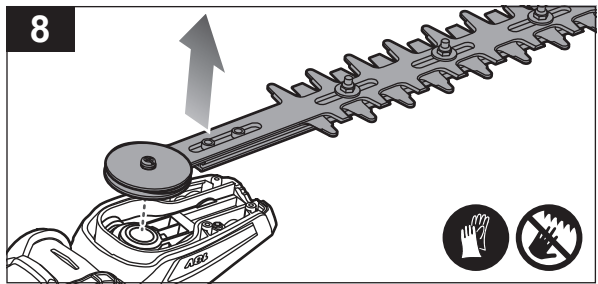
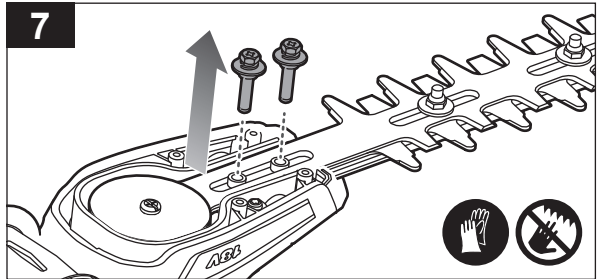
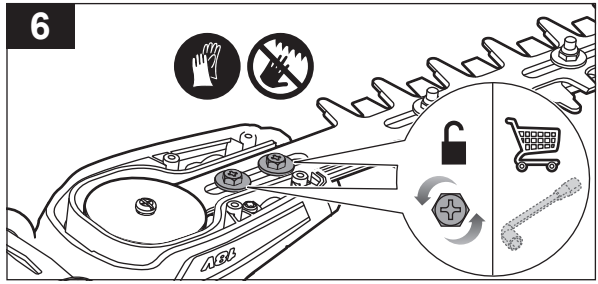


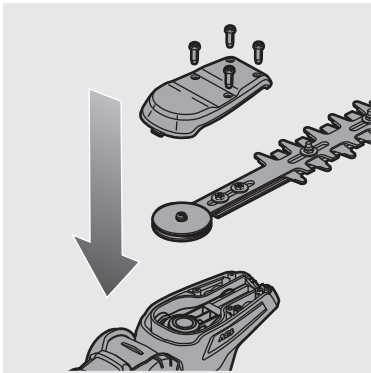
REMOVING THE BLADE

1. Press the latches and remove the battery pack from the battery port.
2. Turn the shaft coupling counterclockwise and slide the pole hedge trimmers forwards to remove it from the extension pole.
3. Turn the pole hedge trimmer attachment upside down.
4. Using a screwdriver, turn the gearbox cover screws counterclockwise to loosen them.
5. Remove the gearbox cover screws and gearbox cover.



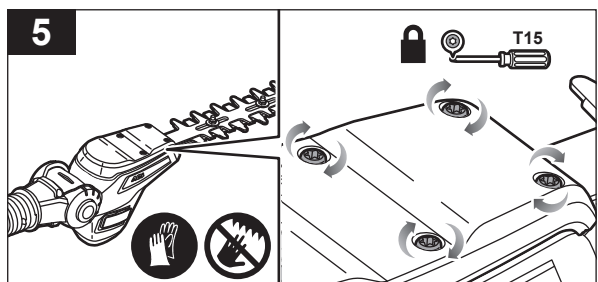
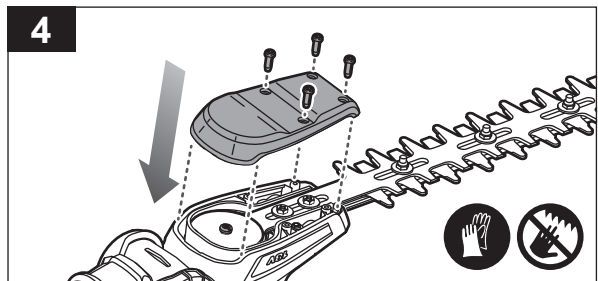
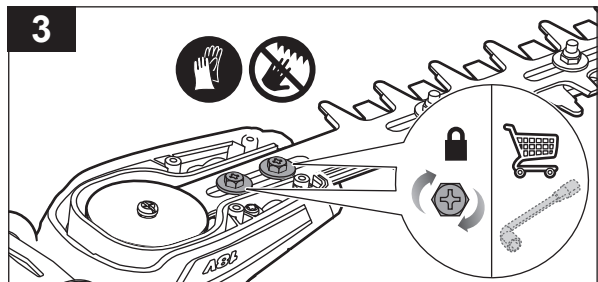
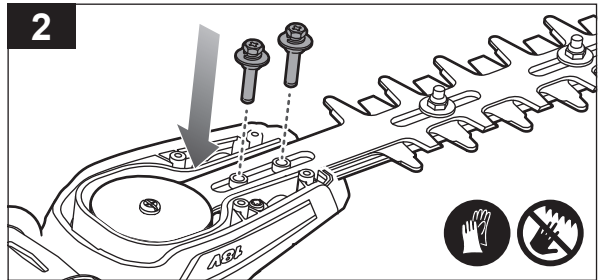
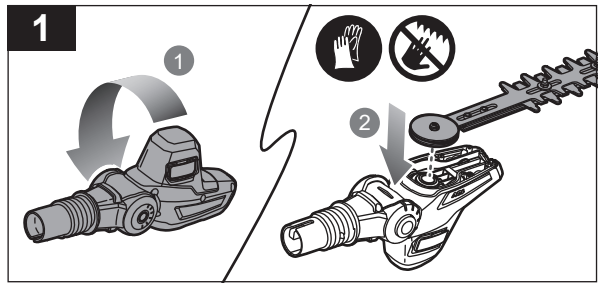
- Using a socket wrench, turn the blade shaft screws counterclockwise to loosen them.
- Remove the blade shaft screws from the blade.
- Remove the blade from the pole hedge trimmer attachment.

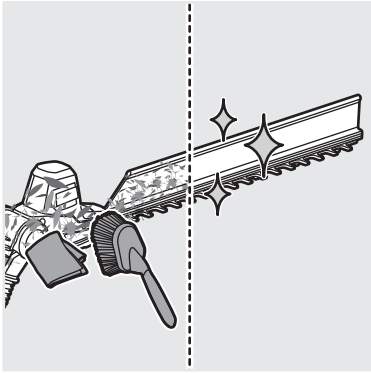




INSTALLING THE BLADE

1. Turn the pole hedge trimmer attachment upside down before installation. Install the blade to the pole hedge trimmer attachment.
2. Install the blade shaft screws to the blade.
3. Using a socket wrench, turn the blade shaft screws clockwise to tighten them.
NOTE: Do not overtighten the screws. The torque setting is 0.98–1.77 Nm.
4. Install the gearbox cover and gearbox screws to the pole hedge trimmer attachment.
5. Using a screwdriver, turn the gearbox screws clockwise to tighten them.
NOTE: Do not overtighten the screws. The torque setting is 0.98–1.77 Nm.



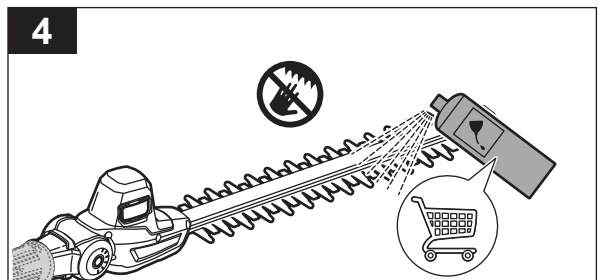
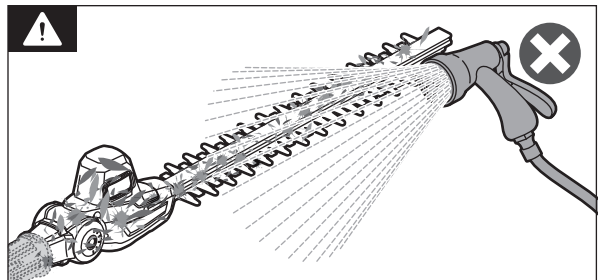
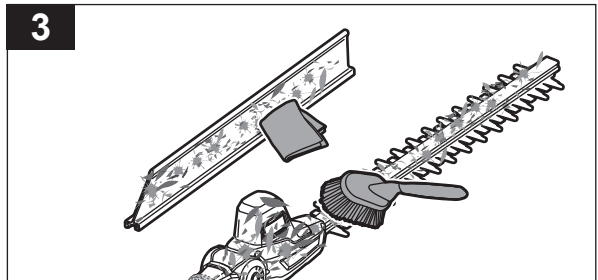
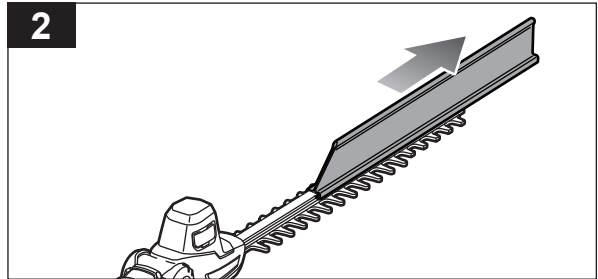
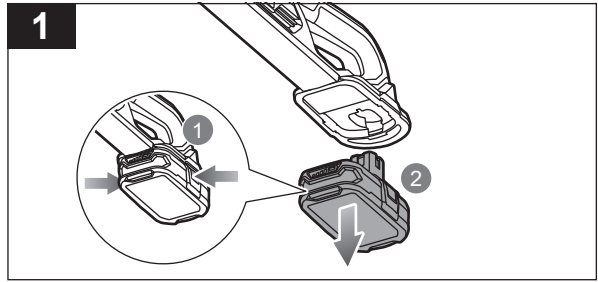


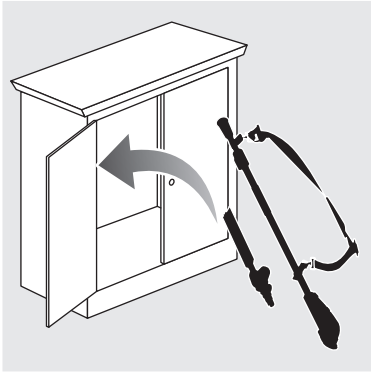
CLEANING THE PRODUCT

1. Press the latches and remove the battery pack from the battery port.
2. Remove the HEDGESWEEP debris sweeper.
3. Clean the HEDGESWEEP debris sweeper and body and handles of the product with a soft, dry cloth. Clean the blades with a stiff brush.

WARNING: Do not use water to clean the product.

4. Lubricate the blades lightly before and after use with a plant-friendly lubricant.

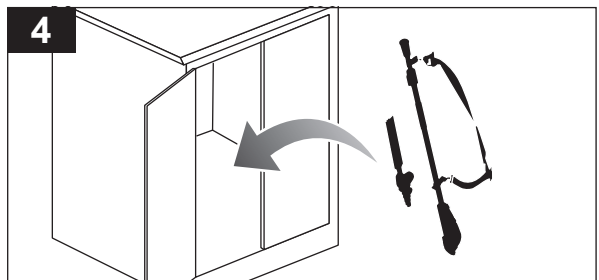
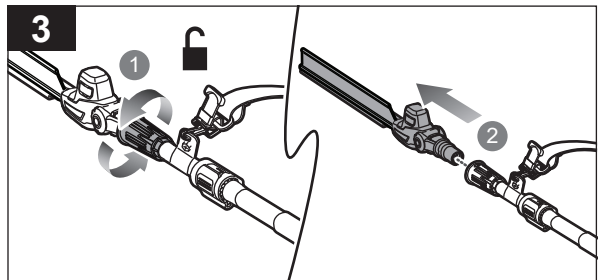
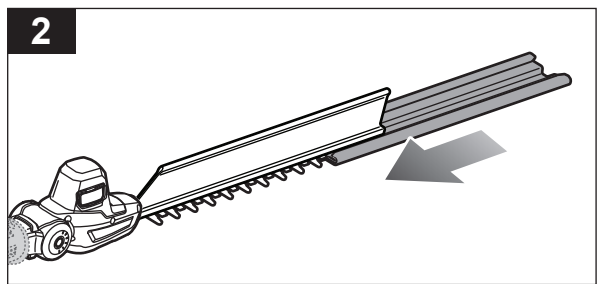
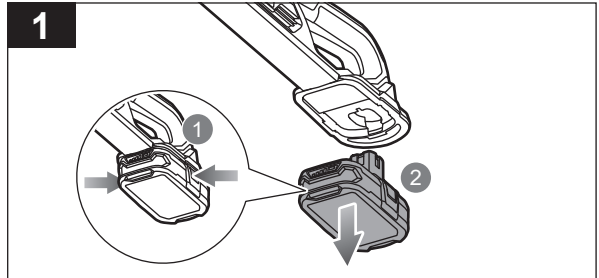
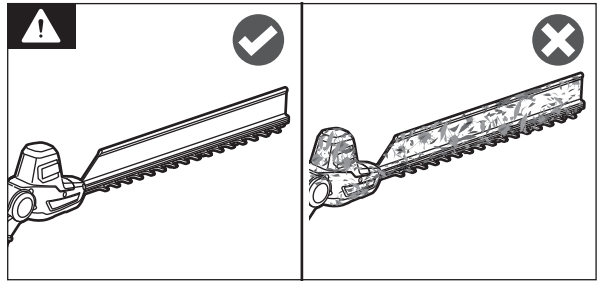




STORING THE PRODUCT

WARNING: Make sure that the product is clean before storing.

1. Press the latches and remove the battery pack from the battery port.
2. Install the blade cover.
3. Turn the shaft coupling counterclockwise, and remove the pole hedge trimmer attachment from the telescopic pole.
4. Store the product in a cool, dry, and well-ventilated place that is inaccessible to children and well away from sources of ignition.



20240326v1

PRODUCT SPECIFICATIONS

Cordless pole hedge trimmer

Model R18PHT130

Rated voltage 18 V d.c.

No-load speed 2700 SPM

Blade length 400 cm

Cutting capacity 16 mm

Weight (without battery pack) 3.47 kg

Weight (with heaviest battery pack) 4.67 kg

Vibration level (in accordance with EN 62841-1 and EN 62841-4-2 ANNEX I)

Front handle $a_h = 1.0 \text{ m/s}^2$

Rear handle $a_h = 1.0 \text{ m/s}^2$

Uncertainty $K_h = 1.5 \text{ m/s}^2$

Noise emission level (in accordance with EN 62841-1 and EN 62841-4-2 ANNEX I)

A-weighted sound pressure level at the operator's position $L_{pA} = 79.3 \text{ dB (A)}$

Uncertainty $K_{pA} = 3.0 \text{ dB}$

A-weighted sound power level $L_{WA} = 87.3 \text{ dB (A)}$

Uncertainty $K_{WA} = 3.0 \text{ dB}$

Declared sound power level 91 dB (A)

Compatible battery packs
 RB1815C, RB1820C,
 RB1840C, RB1840X,
 RB18L13, RB18L26, RB18L15,
 RB18L15A, RB18L15B,
 RB18L20, RB18L20A,
 RB18L25, RB18L25A,
 RB18L30, RB18L30A,
 RB18L40, RB18L40A,
 RB18L50, RB18L50A,
 RB18L60, RB18L60A,
 RB18L90, RB18L90A

NOTE: Visit your local special orders desk or contact RYOBI customer service for replacement parts.

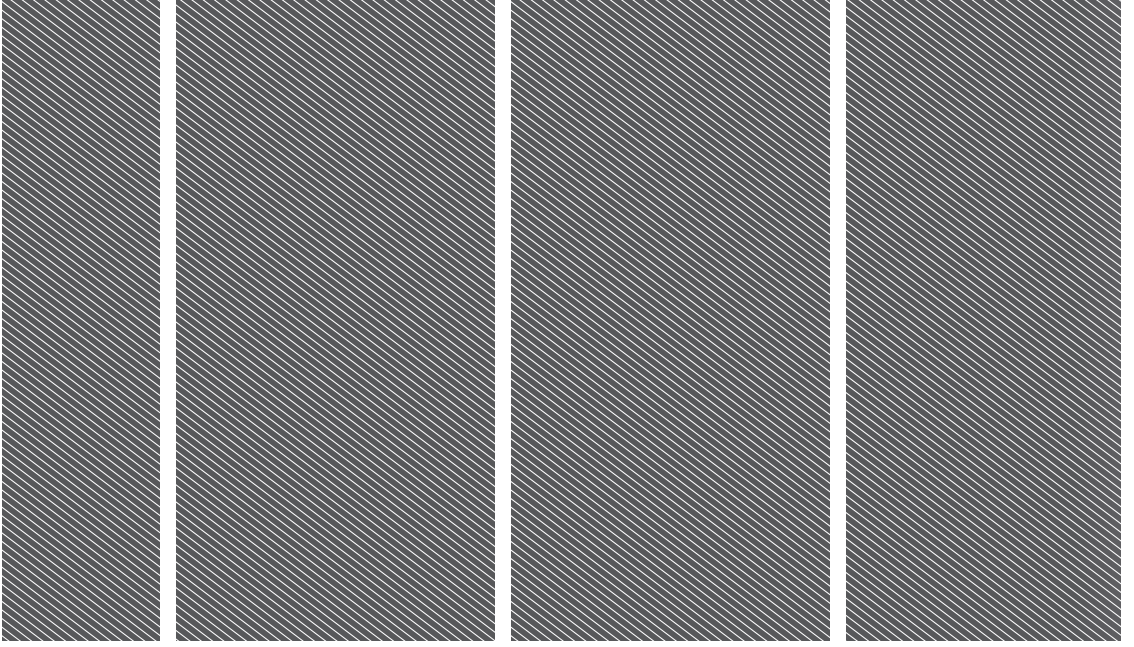
⚠ WARNING! The declared vibration total values and the declared noise emission values given in this instruction manual have been measured in accordance with a standardised test and may be used to compare one tool with another. They may be used for a preliminary assessment of exposure.

The declared vibration and noise emission values represent the main applications of the tool. However, if the tool is used for different applications, used with different accessories, or poorly maintained, the vibration and noise emission may differ. These conditions may significantly increase the exposure levels over the total working period. An estimation of the level of exposure to vibration and noise should take into account the times when the tool is turned off or when it is running idle. These conditions may significantly reduce the exposure level over the total working period.

Identify additional safety measures to protect the operator from the effects of vibration and noise, such as maintaining the tool and the accessories, keeping the hands warm (in case of vibration), and organising work patterns.







Imported by:
Techtronic Industries Australia Pty Ltd
31 Gilby Road, Mount Waverley, VIC 3149
Melbourne, Australia

Techtronic Industries N.Z. Limited
Unit C, 70 Business Parade South,
Highbrook, Auckland 2013, New Zealand

*RYOBI is a trade mark of Ryobi Limited, and is used under license.
HEDGESWEEP is a trade mark of Techtronic Outdoor Products
Technology Limited.*

961476036-01

