

ESTILO®

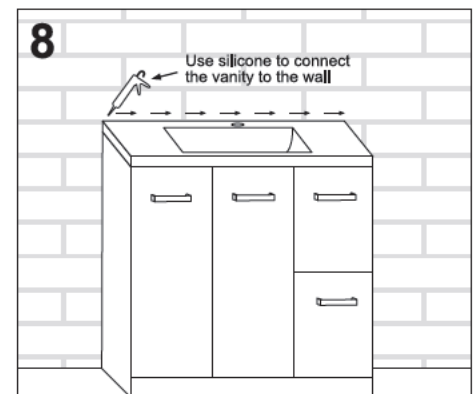
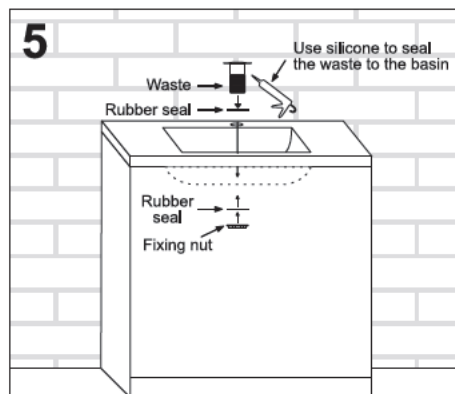
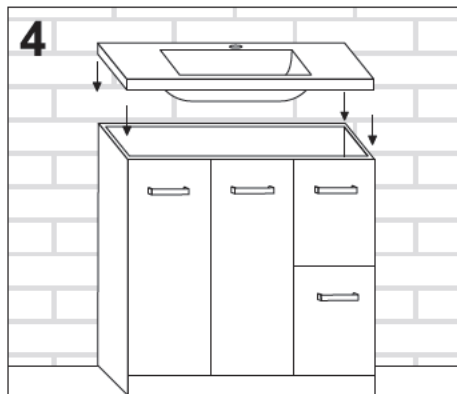
900MM VANITY WITH SMC MOULDED TOP

IMPORTANT

- Please refer to the warranty card for any claims or exclusions to the warranty.
- Prior to installation, all parts and components should be thoroughly inspected for defects. This product will not be warranted if it has been installed with pre-existing defects.
- This product must be installed by a licensed tradesperson.
- All plumbing must be installed by a licensed plumber.
- Under no circumstances should vanities and/or basins be tiled into the wall.
- This product must not be installed in an area where it may be exposed to splashing water from a bath or shower.

INSTALLATION

1. Measure the locations that your plumbing will need to be transferred into the vanity unit.
2. Using a hole saw, drill holes to suit the size of the plumbing in the marked out locations.
3. Place the vanity into desired location.
4. Install the SMC basin onto the cabinet.
5. Install a waste into the basin (not included). Water based silicone is recommended to seal the top and bottom of the waste to the basin.
6. Connect all the plumbing.
7. Check for leaks.
8. Silicone can be used to connect the vanity unit to the wall if desired.



CARE INSTRUCTIONS

- Wipe down the vanity unit using warm soapy water on a damp cloth. Do not use any abrasive cleaners, chemicals, disinfectants, acetone, alcohol or cleaners which can damage the vanity unit.
- When cleaning the cabinet make sure all moisture from the damp cloth has been removed with a dry cloth.
- The cabinet is water resistant, not waterproof, so make sure that the bathroom is well ventilated to prevent moisture build up. Do not allow water to stand for a long time, ensure that water is removed as soon as possible to prevent swelling.
- If the basin comes into contact with acidic materials, rinse immediately with plenty of water and wipe with a soft, dry cloth. Avoid leaving toothpaste or other bathroom products' residues on the surface for extended periods.
- Do not leave rusty objects in contact with the basin. Rust can cause staining, cracking or even permanent damage to the basin surface.
- Be mindful of sharp objects that may scratch or damage the surface. Do not tap objects such as shaving razors or toothbrushes etc., against the basin.