



R18XBLV20
R18XBLV26



IMPORTANT!

It is essential that you read the instructions in this manual before assembling, operating, and maintaining the product.

Subject to technical modification.

Safety, performance, and dependability have been given top priority in the design of your cordless blower/vacuum.

INTENDED USE

The cordless blower/vacuum is intended for outdoor use only, in dry, and well-illuminated conditions.

The product is not intended to be used by children or persons with reduced physical, mental, or sensory capabilities.

The product is designed for blowing or vacuuming light debris, such as leaves, grass, and other garden refuse. It is intended to vacuum and mulch debris and deposit it into the collection bag.

The product is not designed to suck in water or other liquids.

Do not use the product for any other purpose.

GENERAL SAFETY WARNINGS

⚠ WARNING! Read all safety warnings and all instructions. Failure to follow the warnings and instructions may result in electric shock, fire, and/or serious injury. Save all warnings and instructions for future reference.

⚠ WARNING! Never allow children or people who are unfamiliar with these instructions to use the product. Local regulations may restrict the age of the operator. Children should be adequately supervised to ensure that they do not play with the product.

TRAINING

- Read the instructions carefully. Be familiar with the controls and the correct use of the product.
- Keep in mind that the operator or user is responsible for accidents or hazards occurring to other people or their property.
- Do not use the product while tired, ill, or under the influence of drugs, alcohol, or medication.

PREPARATION

- Some regions have regulations that restrict the use of the product to some operations. Check with your local authority for advice.
- Wear hearing protection at all times while operating the product. The product is noisy and may cause permanent hearing injury if precautions to limit your exposure and to reduce noise are not strictly adhered to..
- Wear full eye protection at all times while operating the product. The manufacturer strongly suggests a full face mask or fully enclosed goggles. Normal spectacles or sunglasses are not adequate protection. Objects can be thrown at high speed by the powerful air jet at any time and may rebound from hard surfaces toward the operator.
- While operating the product, always wear substantial footwear and long trousers. Do not operate the product when barefoot or wearing open sandals. Avoid wearing loose-fitting clothing or clothes with hanging cords or ties.
- Do not wear loose clothing or jewelry that can be drawn into the air inlet. Secure long hair so it is above shoulder level to prevent entanglement in moving parts.
- Before each use, ensure that all controls and safety devices function correctly. Do not use the product if the off switch does not stop the product.
- Operate the product in the recommended position and only on a firm and level surface.
- Do not operate the product on a paved or gravel surface where ejected material could cause injury.
- Before each use, always inspect the housing for damage. Ensure that guards and handles are in place and properly secured. Replace worn or damaged components in sets to preserve balance. Replace damaged or unreadable labels.
- Never operate the product while people, especially children, or pets are nearby.
- Keep all cooling air inlets clear of debris.
- Clear the work area before each use. Remove all objects such as rocks, broken glass, nails, wire, or string that can be blown a considerable distance by high velocity air.

BATTERY TOOL USE AND CARE

- Recharge only with the charger specified by the manufacturer. A charger that is suitable for one type of battery pack may create a risk of fire when used with another battery pack.
 - Use power tools only with specifically designated battery packs. Use of any other battery packs may create a risk of injury and fire.
 - When battery pack is not in use, keep it away from other metal objects, like paper clips, coins, keys, nails, screws or other small metal objects that can make a connection from one terminal to another. Shorting the battery pack terminals together may cause burns or a fire.
 - Under abusive conditions, liquid may be ejected from the battery pack; avoid contact. If contact accidentally occurs, flush with water. If liquid contacts eyes, additionally seek medical help. Liquid ejected from the battery pack may cause irritation or burns.
 - Do not use a battery pack or tool that is damaged or modified. Damaged or modified batteries may exhibit unpredictable behaviour resulting in fire, explosion, or risk of injury.
 - Do not expose a battery pack or tool to fire or excessive temperatures. Exposure to fire or excessive temperature above 130°C may cause explosion.
 - Follow all charging instructions and do not charge the battery pack or tool outside the temperature range specified in the instructions. Charging improperly or at temperatures outside the specified range may damage the battery and increase the risk of fire.
- Keep your face and body away from the feed intake opening.
 - Operate the product only at reasonable hours—not early in the morning or late at night when people might be disturbed.
 - Never operate the product in an explosive atmosphere.
 - Avoid using the product in bad weather conditions, especially when there is a risk of lightning.
 - Operating similar tools nearby increases both the risk of hearing injury and the potential for other persons to enter your working area. The use of hearing protection reduces the ability to hear warnings (shouts or alarms). The operator must pay extra attention to what is going on in the working area. Do not get distracted and always concentrate on the task.
 - Always be sure of your footing on slopes. Walk, never run.
 - Keep proper footing and balance. Do not overreach. Overreaching can result in loss of balance.
 - Never use the product with defective guards or shields, or without safety devices, such as debris collector, in place.
 - Do not modify the product in any way or use parts and accessories that are not recommended by the manufacturer.
 - If the product is dropped, suffers heavy impact, or begins to vibrate abnormally, immediately stop the product and inspect for damage or identify the cause of the vibration. Any damage should be properly repaired or replaced by an authorised service centre.
 - To reduce the risk of injury associated with contacting rotating parts, always turn off the product and remove the battery pack. Make sure that all moving parts have come to a complete stop:
 - before leaving the product unattended
 - before clearing blockages
 - before checking, cleaning, or working on the product
 - before inspecting the product after striking a foreign object
 - whenever the product starts to vibrate abnormally (inspect immediately)

OPERATION

⚠ WARNING! Your blower/vacuum may be supplied with a harness. Carefully adjust the harness to comfortably help to support the weight of the product. Identify the quick release mechanism and practice using it before you start using the product. Its correct use may prevent serious injury in the case of an emergency. Never wear additional clothing over the harness or otherwise restrict access to the quick release mechanism.

- Before starting the product, make sure that the feeding chamber is empty.

- Immediately turn off the product and remove the battery pack in the event of accident or breakdown. Do not operate the product again until it has been fully checked by an authorised service centre.
- Injuries may be caused or aggravated by prolonged use of a tool. When using any tool for prolonged periods, ensure to take regular breaks.

BLOWER SAFETY WARNINGS

- Wear a face filter mask in dusty conditions to reduce the risk of injury associated with the inhalation of dust.
- Slightly dampen surfaces in dusty conditions.
- Do not use the product near open windows.
- Use the full blower nozzle extension so that the air stream can work close to the ground and perform effectively.
- Use rakes and brooms to loosen debris before blowing.
- Do not point the blower nozzle in the direction of people or pets.
- Never place objects inside the blower tubes.
- Do not place the product on top of or near loose debris. Debris can be sucked into the intake vent, resulting in possible damage to the product.

VACUUM SAFETY WARNINGS

Before using the product in vacuum mode, the upper and lower tubes must be assembled. The assembly is a one-time operation only. Never operate the vacuum with only the upper vacuum tube fitted. Failure to follow this warning increases the risk of personal injury.

Without the lower vacuum tube fitted, it is much easier to reach up inside the tube towards the fan blade.

- Do not operate the vacuum without the debris collector bag assembly installed. Flying debris could cause serious injury. Make sure that the debris collector bag is in good condition and completely closed before operating the product.
- Move the vacuum from side to side along the outer edge of the debris. To avoid clogging, do not place the vacuum tube directly into the debris pile.

- Hold the motor higher than the inlet end of the vacuum tube.
- To avoid serious injury to the operator or damage to the product, do not try to vacuum up rocks, broken glass, bottles, or similar objects.
- Avoid situations that could cause fire in the debris collector bag. Do not operate the product near an open flame. Do not vacuum up warm ash from fireplaces and barbecue pits. Do not vacuum up discarded cigars or cigarettes unless the cinders are completely cool.
- Keep all parts of your body away from any moving part. Rotating fan blades can cause severe injury. Stop the motor and ensure that fan blades have stopped rotating before opening the vacuum door, installing or changing tubes, or opening or removing the debris bag.
- When feeding material into the product, make sure that the pieces of metal, rocks, bottles, cans, or other foreign objects are not included.
- Do not allow processed material to build up in the discharge zone. This may prevent proper discharge and can result in kickback of material through the intake opening.
- If the product becomes clogged, stop the product and remove the battery pack before cleaning the debris.

ADDITIONAL BATTERY SAFETY WARNINGS

To reduce the risk of fire, personal injury, and product damage due to a short circuit, never immerse the tool, battery pack or charger in fluid or allow fluid to flow inside them. Corrosive or conductive fluids, such as seawater, certain industrial chemicals, and bleach or bleach-containing products, etc., can cause a short circuit.

TRANSPORTATION AND STORAGE

- Turn off the product, remove the battery pack, and allow it to cool down before storing or transporting.
- Remove all foreign materials from the product. Store the product in a cool, dry, and well-ventilated place that is inaccessible to children. Keep the product away from corrosive agents, such as garden chemicals

and de-icing salts. Do not store the product outdoors.

- For transportation in a vehicle, secure the product against movement or falling to prevent injury to persons or damage to the product.

TRANSPORTING LITHIUM BATTERIES

Transport the battery in accordance with local and national provisions and regulations.

Follow all special requirements on packaging and labelling when transporting batteries by a third party. Ensure that no batteries can come in contact with other batteries or conductive materials while in transport by protecting exposed connectors with insulating, non-conductive caps or tape. Do not transport batteries that are cracked or leaking. Check with the forwarding company for further advice.

MAINTENANCE

- Use only original manufacturer's replacement parts, accessories, and attachments. Failure to do so can cause possible injury, can contribute to poor performance, and may void your warranty.
- Servicing requires extreme care and knowledge and should be performed only by a qualified service technician. Have the product serviced by an authorised service centre only.
- Check all nuts, bolts, and screws at frequent intervals for proper tightness to ensure that the product is in safe working condition. Any part that is damaged should be properly repaired or replaced by an authorised service centre.
- Bring the product to an authorised service centre to replace damaged or unreadable labels.
- You may make adjustments or repairs that are described in this manual. For other repairs, contact an authorised service centre.
- After each use, clean the product with a soft, dry cloth.

CLEARING A BLOCKAGE

- To reduce the risk of injury associated with contacting moving parts, always turn off the product, remove the battery pack, and make sure that all moving parts have come to a complete stop.

- Remove the blower/vacuum tubes to inspect for blockage. Clear the tubes if required.
- Remove the debris collector bag. Check that the bag adaptor is free from obstruction.
- Inspect the opening to the fan enclosure and the tube to the debris bag for evidence of a blockage. Remember, even though the battery pack is removed, the fan or mulching blades may move as you clear any blockage. Keep fingers away from the fan or mulching blades at all times.

⚠ WARNING! Do not attempt to remove the fan or mulching blade. If it is necessary to remove the fan or mulching blades, bring the product to an authorised service centre.

- Reinstall the tubes and the debris collector bag before installing the battery pack and starting the product.

SYMBOLS ON THE PRODUCT



Read and understand all instructions before operating the product. Follow all warnings and safety instructions.



Beware of thrown or flying objects. Keep all bystanders, especially children and pets, at least 15 m away from the operating area.



Rotating fans. Keep hands and feet out of openings while the product is running.



Wear ear protection.



Wear eye protection.



Do not expose to rain or damp conditions.



Guaranteed sound power level



Remove the battery pack before starting any work on the product.



Pull: Quick-release tab



Regulatory Compliance Mark (RCM). The product meets applicable regulatory requirements.



Blower mode



Vacuum mode



Speed up



Speed down, on/off



Waste electrical products should not be disposed of with household waste. Recycle where facilities exist. Check with your local authority or retailer for recycling advice.

SYMBOLS IN THIS MANUAL



Parts or accessories sold separately

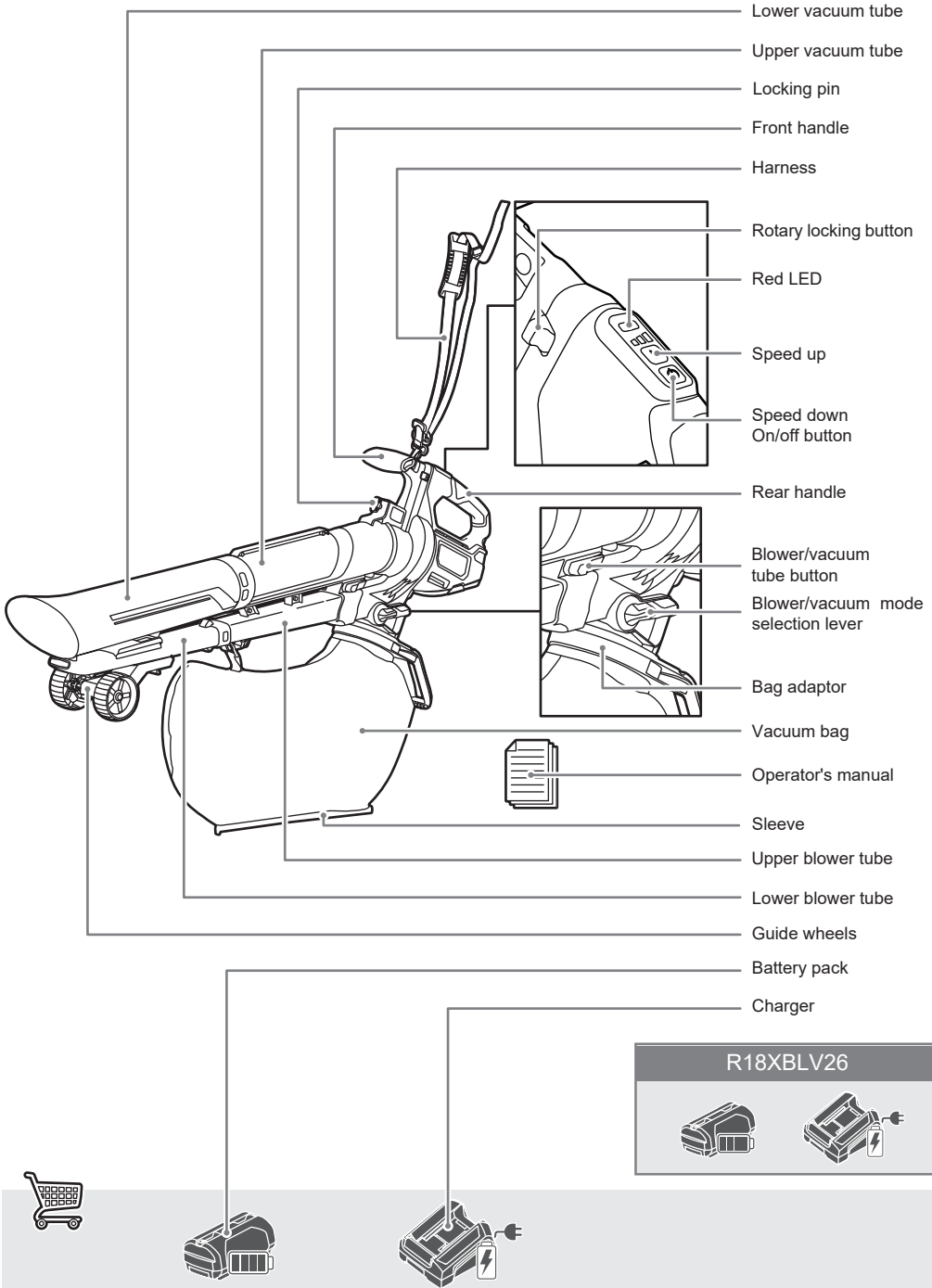


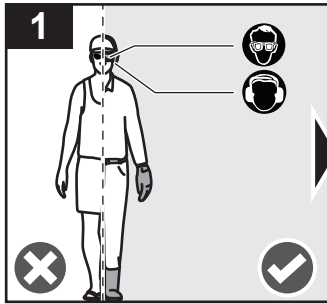
Note



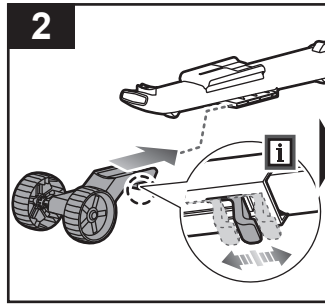
Warning

R18XBLV20



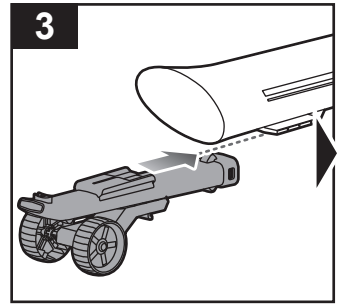


Wear full eye and ear protection, substantial footwear, and long trousers at all times while operating the product. Do not operate the product when barefoot or wearing open sandals.

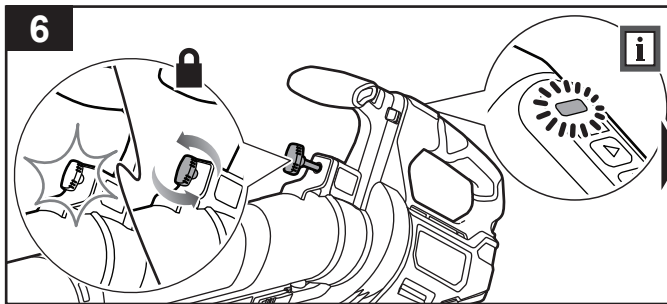


Slide the guide wheel onto the lower blower tube.

NOTE: Use the tab on the rear side to slide the guide wheels up or down and adjust its position.

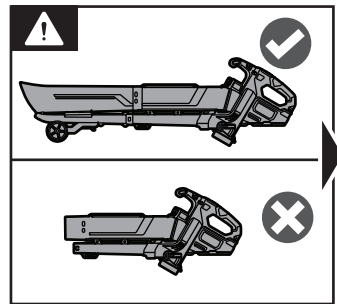


Attach the lower vacuum tube into the lower blower tube until it is secured.

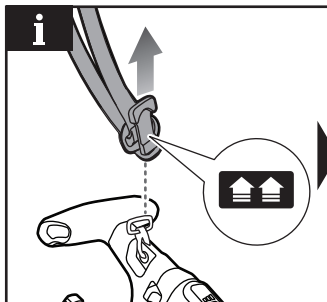


Insert the locking pin into the lock thread and turn the pin clockwise to secure the blower/vacuum tube assembly.

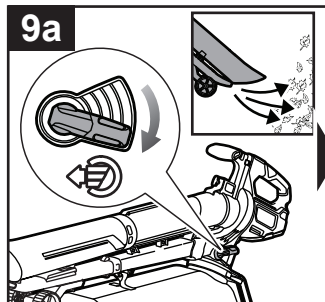
NOTE: The red LED turns on if the product is overloaded.



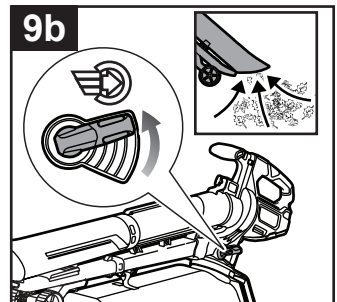
Never use the blower vacuum without connecting the lower blower and vacuum tube.



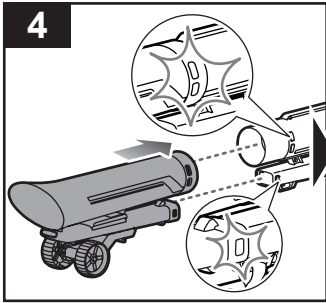
NOTE: To quickly disconnect the harness from the product, pull up the quick-release tab.



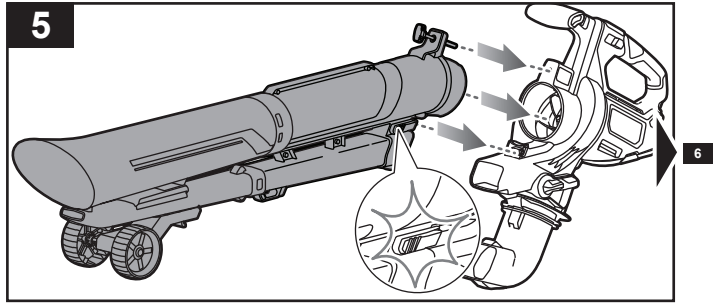
Push down the selection mode lever to select the blower function.



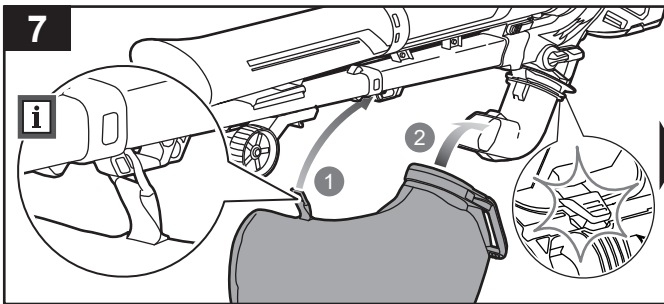
Push up the selection mode lever to select the vacuum function.



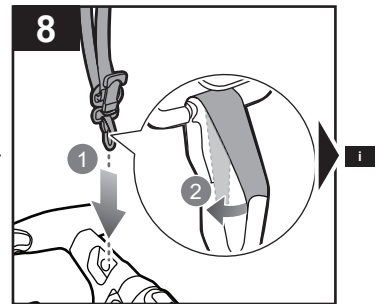
4
Insert the lower vacuum tube into the upper vacuum tube until it clicks into place.



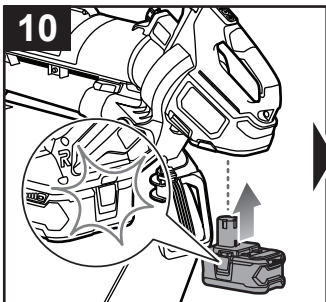
5
Connect the blower/vacuum tube to the housing opening, ensuring that the fin is inserted into the housing slot, then push the blower/vacuum tube until it locks into place.



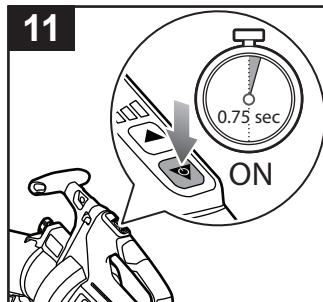
7
Hook the vacuum bag to the lower blower tube. Guide the vacuum bag opening over the bag adaptor, then snap the vacuum bag opening into place.



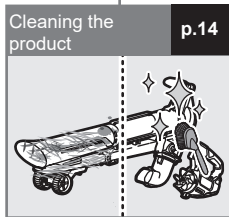
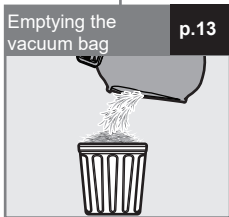
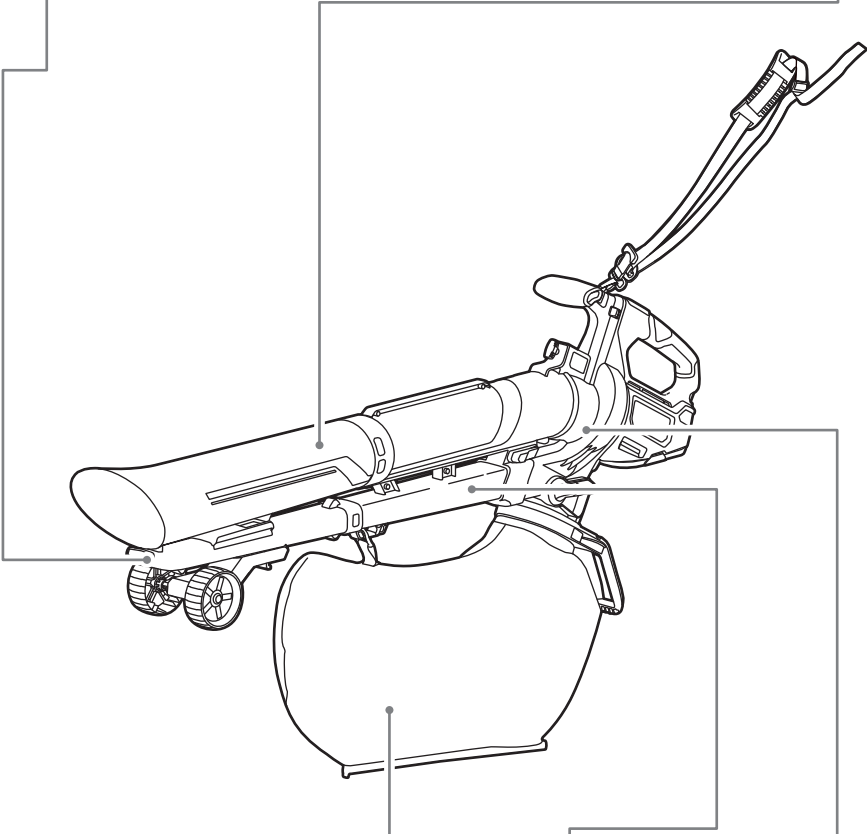
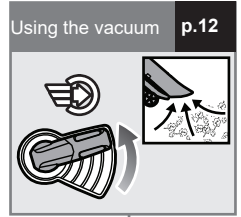
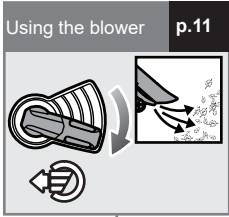
8
Hook the harness to the hole on the handle.

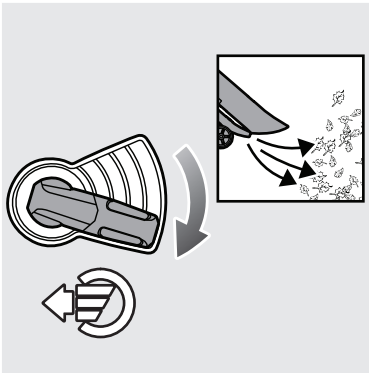


10
Insert the battery pack into the product until it clicks into place.



11
Press on/off button to turn on the product.

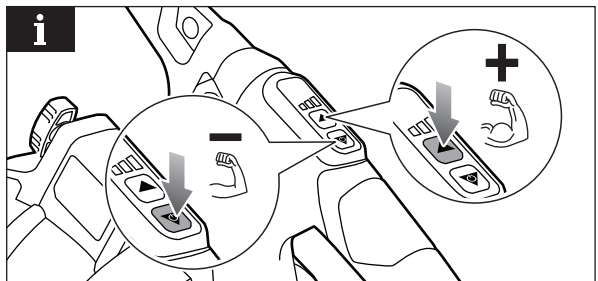
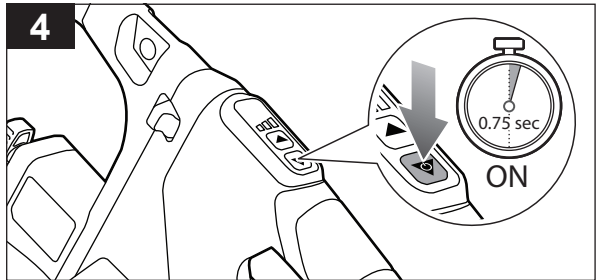
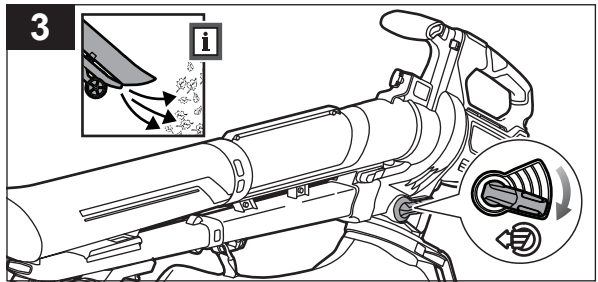
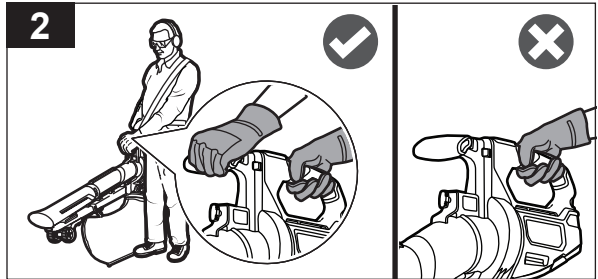
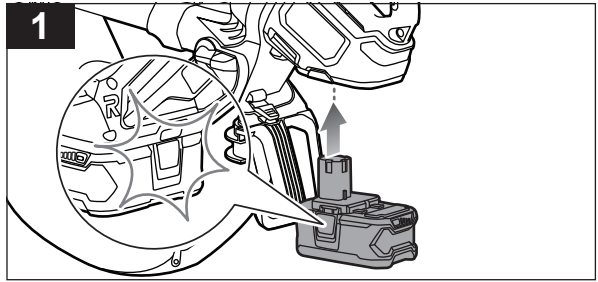


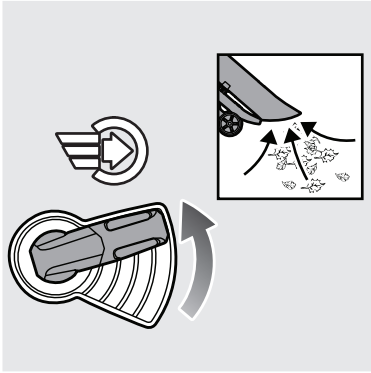


USING THE BLOWER

1. Insert the battery pack into the product until the latch clicks into place. Make sure that the battery pack is securely attached before using the product.
2. Hold the product with two hands by the designated handles at all times.
3. Turn the selection mode lever to the blower function.
4. Press the on/off button to turn on the product.

NOTE: Press the speed down or speed up button to decrease or increase the blower speed.

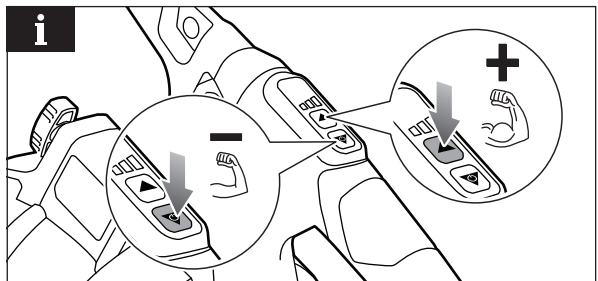
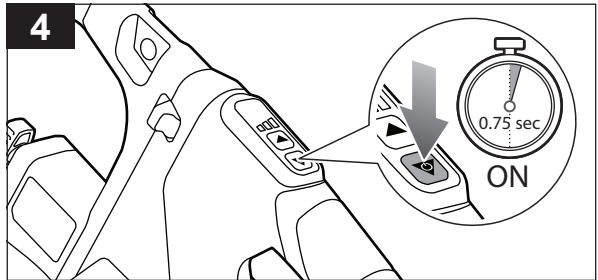
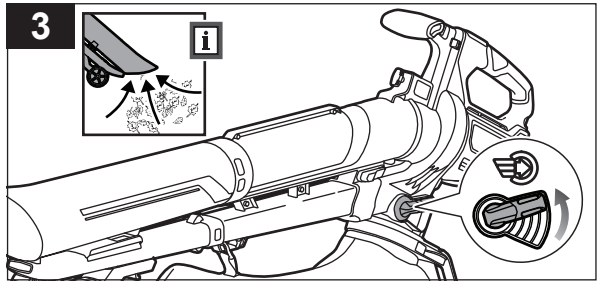
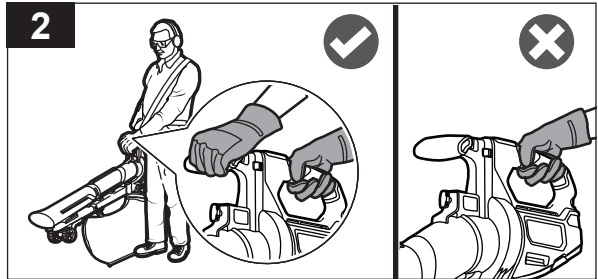
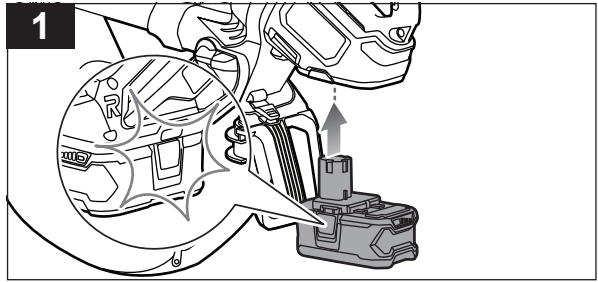


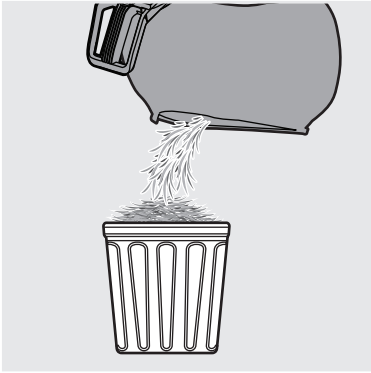


USING THE VACUUM

1. Insert the battery pack into the product until the latch clicks into place. Make sure that the battery pack is securely attached before using the product.
2. Hold the product with two hands by the designated handles at all times.
3. Turn the selection mode lever to the vacuum function.
4. Press the on/off button to turn on the product.

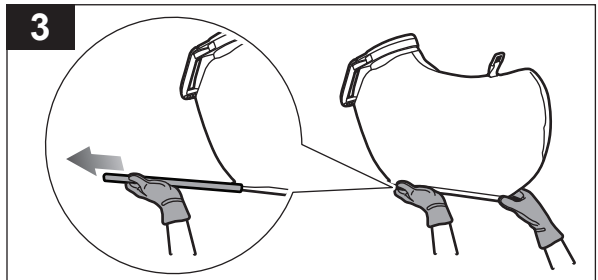
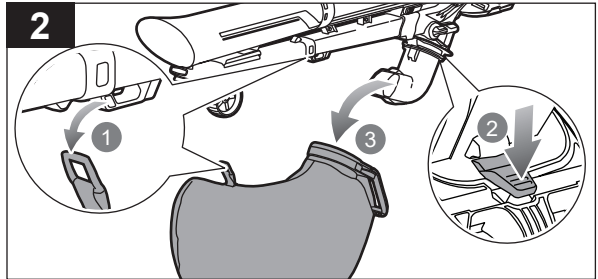
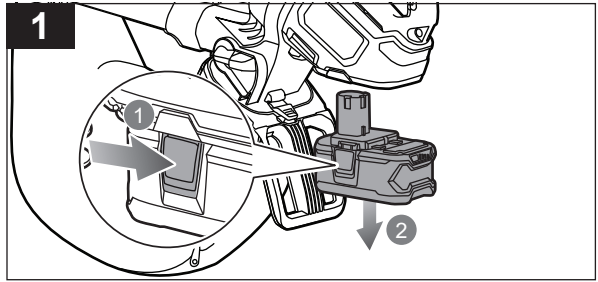
NOTE: Press the speed down or speed up button to decrease or increase the blower speed.

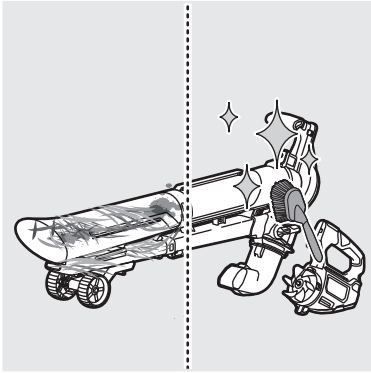




EMPTYING THE VACUUM BAG

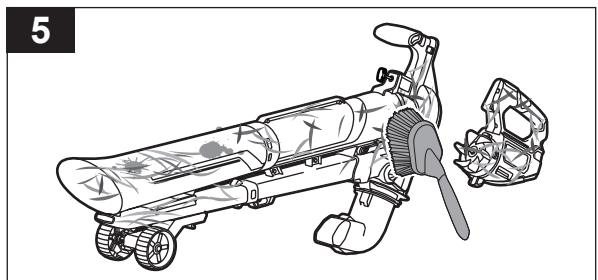
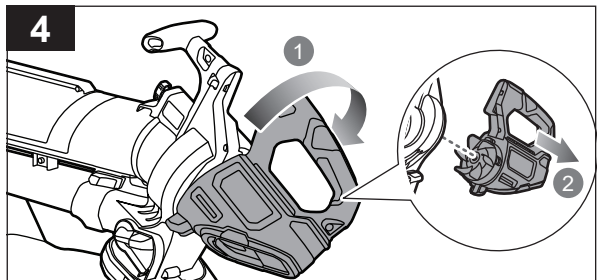
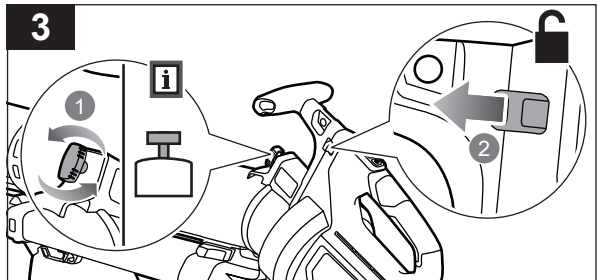
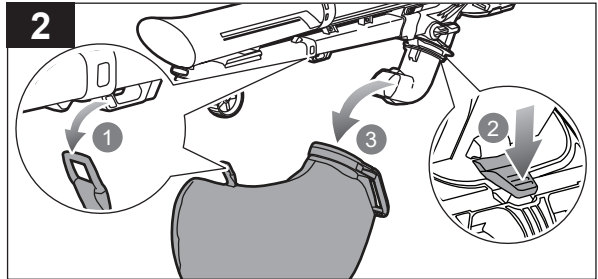
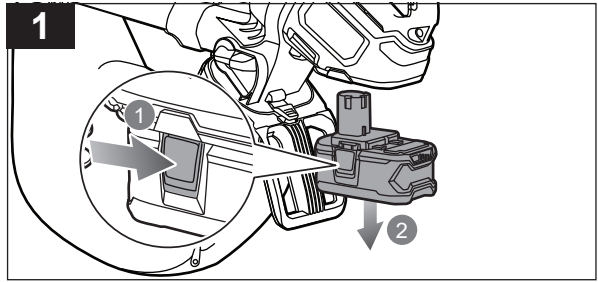
1. Press the latches on each side and pull out the battery pack.
2. Unhook the vacuum bag from the lower blower tube. At the rear side of the vacuum bag opening, unlatch the locking tab from the bag adaptor and then remove the vacuum bag.
3. Slide out the sleeve to open the vacuum bag.
4. Remove its contents.



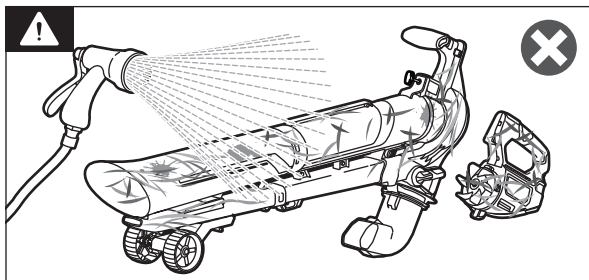


CLEANING THE PRODUCT

1. Press the latches on each side and pull out the battery pack.
2. Unhook the vacuum bag from the lower blower tube. At the rear side of the vacuum bag opening, unlatch the locking tab from the bag adaptor and then remove the vacuum bag.
3. Turn the locking pin counterclockwise. Slide the lock/unlock switch to unlock the rear handle assembly.
4. Turn the rear handle assembly clockwise and pull it away from the blower/vacuum tube assembly.
5. Clean the product using a brush.



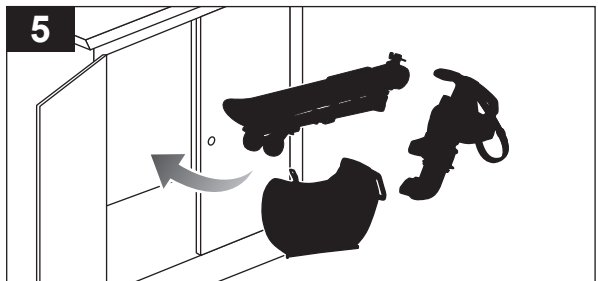
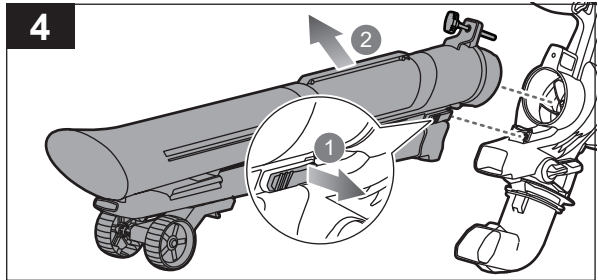
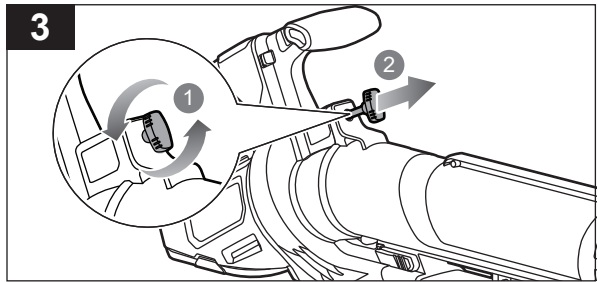
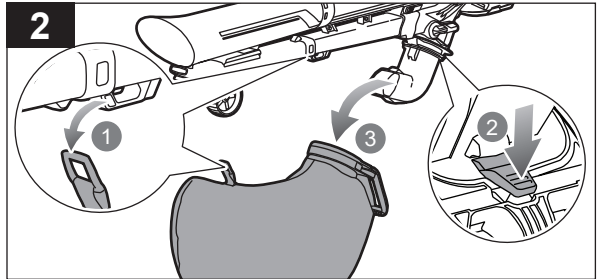
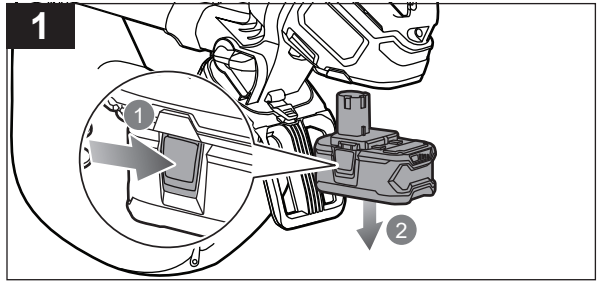
WARNING: Avoid using solvents when cleaning plastic parts. Most plastics are susceptible to damage from various types of commercial solvents and may be damaged by their use.





STORING THE PRODUCT

1. Press the latches on each side and pull out the battery pack.
2. Unhook the vacuum bag from the lower blower tube. At the rear side of the vacuum bag opening, unlatch the locking tab from the bag adaptor and then remove the vacuum bag.
3. Turn the locking pin counterclockwise and pull it out.
4. Unlatch the tab to release the blower/vacuum tube and pull out the tube from the housing.
5. Store the product in a cool, dry, and well-ventilated place that is inaccessible to children. Keep away from corrosive agents, such as garden chemicals and de-icing salts. Do not store the product outdoors.



20220322V2

PRODUCT SPECIFICATIONS

Cordless blower/vacuum	
Model	R18XBLV20
Rated voltage	18 V d.c.
Air Velocity	
Blower	252 km/h
Vacuum	126 km/h
Air Volume	
Blower	110 m ³ /h
Vacuum	460 m ³ /h
Mulching ratio	10:1
Weight (without battery)	
Blower/vacuum mode	3.95 kg
Vibration level (in accordance with EN 50636-2-100 Annex BB)	
Total value <i>ah</i>	1.6 m/s ²
Uncertainty of measurement	1.5 m/s ²
Noise emission level (in accordance with EN 50636-2-100 Annex CC)	
A-weighted sound pressure level at the operator's position (Blower/ Vacuum)	86.7 dB(A)
Uncertainty of measurement	3.0 dB
A-weighted sound power	106.6 dB(A)
Uncertainty of measurement	1.4 dB
$L_{WA} + K_{WA}$	108 dB(A)

BATTERY AND CHARGER

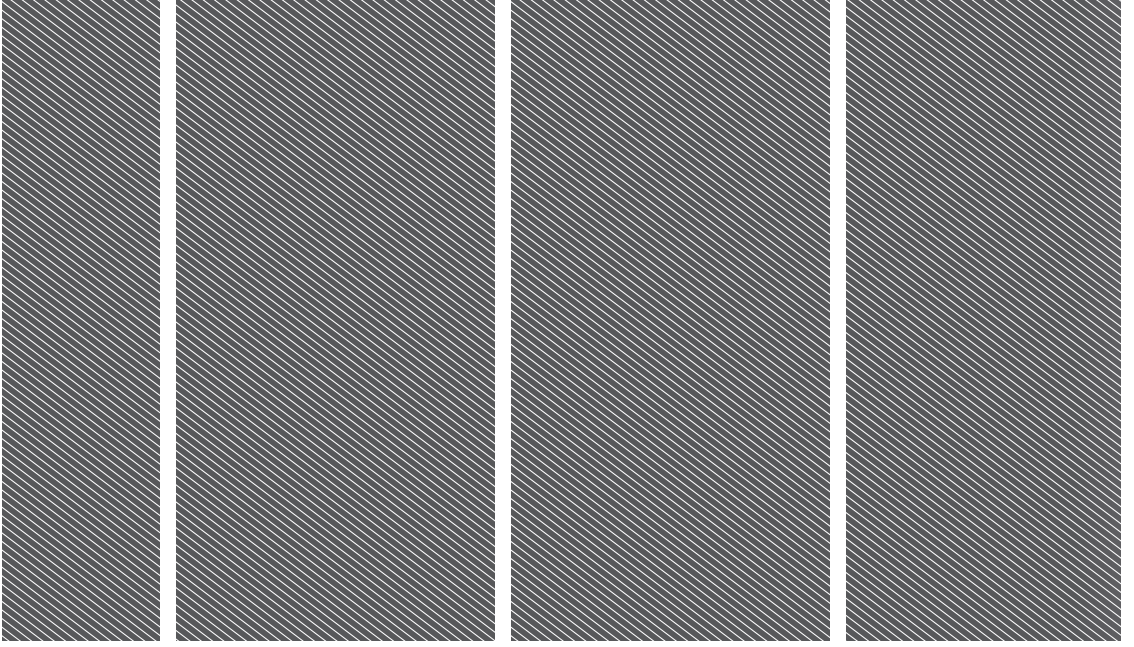
Model	R18XBLV20	R18XBLV26
Battery pack	-	6 Ah
Charger	-	RC18120
Compatible battery packs	RB18L13, RB18L13Z, RB18L15, RB18L15A, RB18L15B, RB1815C, RB18L20, RB18L20A, RB1820C, RB18L25, RB18L25A, RB18L30, RB18L30A, RB18L40, RB18L40A, RB1840C, RB1840X, RB18L50, RB18L50A, RB1850C, RB1850X, RB18L60, RB18L60A, RB18L60X, RB18L90, RB18L90A	

ACCESSORIES

Blower vacuum bag	RBVB3
-------------------	-------







Imported by:

Techtronic Industries Australia Pty Ltd

31 Gilby Road, Mount Waverley, VIC 3149

Melbourne, Australia

Techtronic Industries N.Z. Limited

Unit C, 70 Business Parade South,

Highbrook, Auckland 2013, New Zealand

RYOBI is a trade mark of Ryobi Limited, and is used under license.

960394022-02

