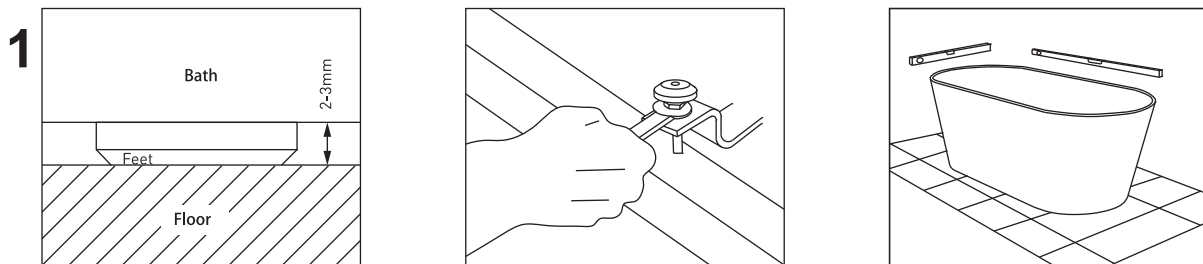


# ESTILO®

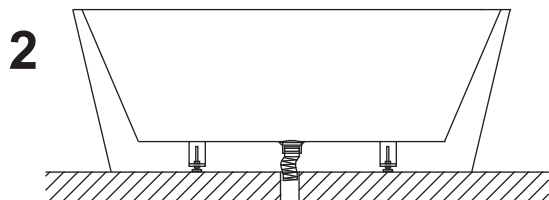
## PLUMBERS INSTALLATION GUIDE FREESTANDING BATHTUB

### IMPORTANT!

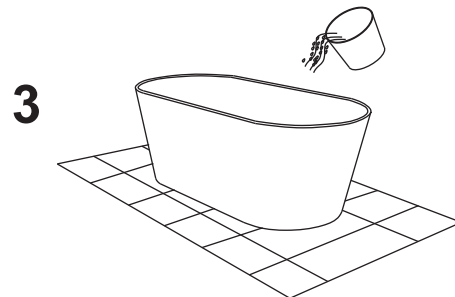
- This bathtub is suitable for freestanding installation only. Waste - Suits a standard 40mm waste assembly (not included).
- Prior to installation, thoroughly inspect product for transport damage or manufacturing defects. Products will not be warranted if installed with pre-existing defects.
- Compliance with AS 3740-2010 Waterproofing of domestic wet areas is required. Installation must comply with local authority building codes and requirements.
- Ensure the bath is adequately protected during installation.



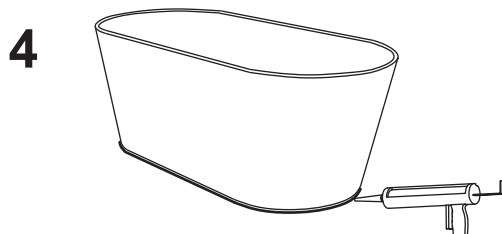
This bath is designed to be supported by the legs. Allow a 2-3mm clearance of the bath from the floor. Tilt the bath on its side (ensure the bath is adequately protected), and adjust the legs on the underside of the bath by loosening the nuts with a spanner in an anti-clockwise direction. Hand-twist the feet to the required height. Make minor adjustments to each leg until the bath is level in all directions. A non-level bath may not drain correctly. Re-tighten the nuts.



Connect the waste (not included) \*Use of wet area silicone sealant is recommended when installing the waste (allow dry time before running a water test).



Run a water test to check the draining of the water and that the waste has been installed correctly. Check for leaks.



Apply wet area silicone sealant to the outer rim of the base of the bath, filling the 2-3mm gap. Allow 24 hours to cure before first use.

### CARE & MAINTENANCE

After each use, clean with warm soapy water and a soft cloth to remove any oils and residues. Minor scratches and marks can be removed with gentle metal polishes such as Brasso. Do not use harsh chemicals or abrasive cleaners. Bath oils should be tested on an inconspicuous area before use.