

INSTALLATION INSTRUCTIONS

1. Fit 'O' ring from fixing pack (15) into groove in underside of mixer base (8). Screw stud (9) into underside of mixer (8).
2. Apply suitable lubricant to 'O' rings (14). Guide flexible tail (13) (with red markings) up through deck hole and insert into hole marked 'H' in underside of mixer body (8). Guide remaining flexible tail (with blue markings) up through deck hole and insert into remaining hole. Ensure both tails (13) are tightened firmly by hand.
3. Ensure hot water tail (13) is to left and stud (9) is to back and commence to place mixer over deck hole. Fit gasket (10) and fixing plate (11) over stud (9) and screw on fixing nut (12). Position the mixer body so that the handle (1) can rotate at equal angles from left to right, then tighten fixing nut (12) using Easy Install Socket Spanner (16).
4. Make certain flexible tails are not kinked, contorted or under tension and then proceed to connect and tighten them to the hot and cold isolating taps.

CARTRIDGE REPLACEMENT

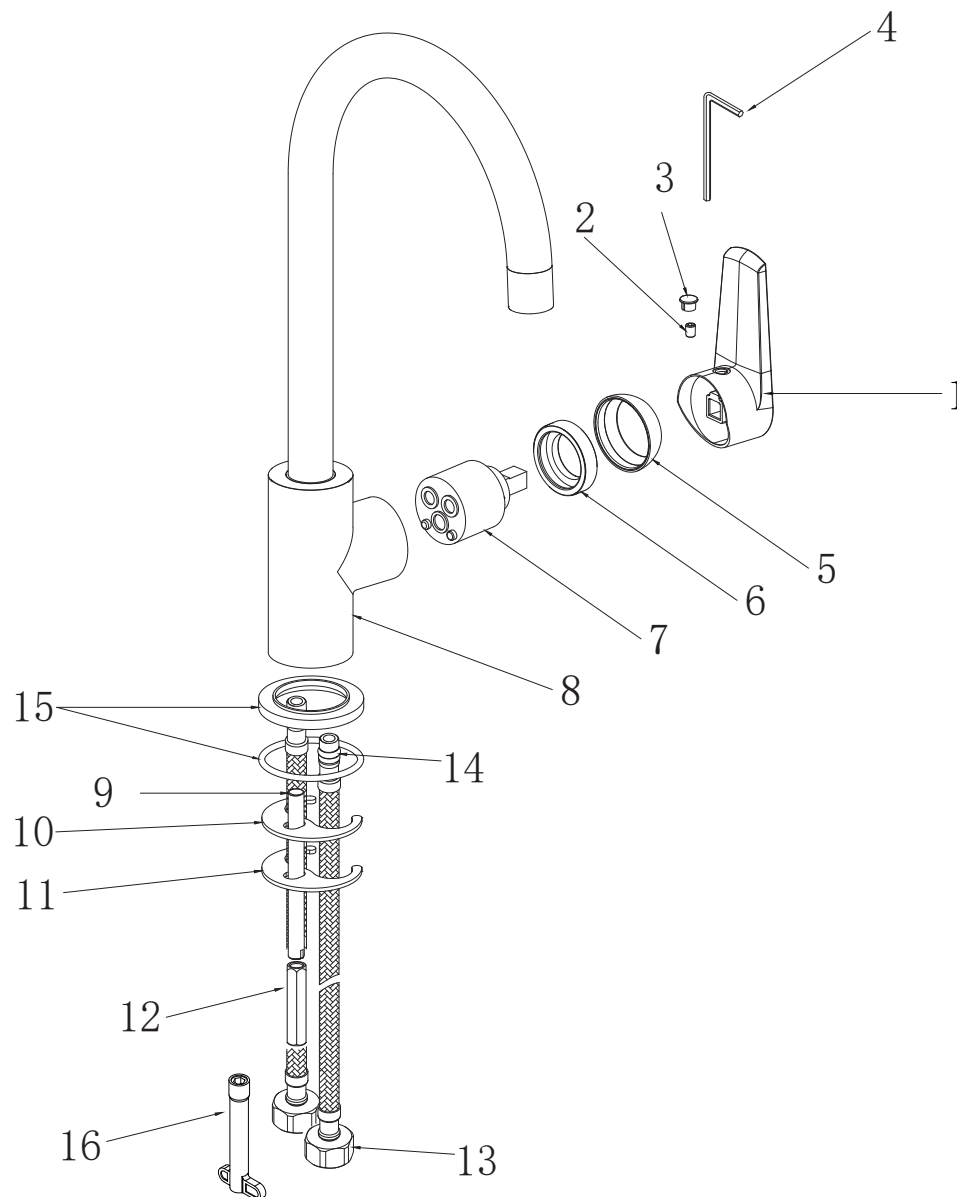
1. Turn off hot and cold water supplies at isolating taps.
2. Remove indicator plug (3). Loosen screw (2) using a small allen key (4) (2.5mm) and take off handle (1). Carefully remove cap (5) from mixer and unscrew nut (6), then lift out old cartridge (7).
3. Ensure inside of mixer body (8) is clean and free of foreign material. Check that seal in base of new cartridge (7) is correctly positioned. Insert new cartridge (7) into mixer body ensuring that the two lugs on the base of the cartridge fit into matching holes in mixer body.
4. Screw on nut (6). Nut (6) should be tightened to a torque of 10 Nm.
5. Replace cap (5) and tighten by hand. Fit handle (1) ensuring that it is fully pushed down, tighten screw (2) and replace indicator plug (3) positioned with blue to the right.
6. Turn on isolating taps and check operation.

WORKING SPECIFICATIONS

- Connections brazed directly onto the mixer, may cause excessive heat and permanent damage and should not be done.
- All pipework must be flushed thoroughly before installation as any foreign material, such as sand or dirt, may block the flow regulating device and reduce the flow of water
- Inlet pressure for hot and cold water should be equal
- Inlet pressure range: 150-1500kPa
- Regulation: 500kPa is the maximum operating pressure allowed at any outlet within a building (Ref. AS/NZS3500.1-2003, clause 3.3.4) - USE OF A PRESSURE LIMITING VALVE IS RECOMMENDED IF WATER PRESSURE IS OVER 500KPA
- Maximum hot water temperature: 80°C

DECK REQUIREMENTS

- Deck thickness: 45mm maximum
- Tap body holes (in deck): Ø32-35mm



CARING FOR YOUR PRODUCT

- Under no circumstances should you install tapware using acetone silicones.
- Never use harsh detergents or abrasive cleaners, as these will scratch the surface. Using a soft dry cloth or a soft cloth with warm soap water is recommended.
- Where your tapware remains dry in use, a soft cloth can be used to remove surface dust. Alternatively, a wipe over with warm soapy water is all that is required to maintain the finish in perfect condition for a lifetime of use.
- Use of wax based furniture cream should be avoided as these can result in a build up of deposits, which could detract from the appearance.
- Do not use undue pressure and wipe in one direction only.
- Flexible hoses may become damaged if exposed to caustic or corrosive substances/environments during installation or cleaning, such damage will not be covered by warranty. We recommend that flexible hoses are replaced every 5 years.

IMPORTANT SCOPE OF USE

- Thoroughly inspect all parts for defects or damage prior installation. Warranty claims will be void if product is installed with pre-existing defects.
- This product has been designed to operate as an indoor mixer and has been manufactured and certified to the requirements of AS/NZS 3718 and AS/NZS 6400.
- This product should be installed by a licensed plumber in accordance with AS/NZS 3500 and any other local, state and national building codes and regulations. Check these regulations before attempting any DIY work.
- This product may not be suitable for gravity fed water systems, tank water systems or bore water systems.
- This product has a low flow rate and may not be suitable for connection to some of the following products: instantaneous gas water heaters, tempering valves, solar water heaters and thermostatic mixing valves. Check with the manufacturer of these products.
- This product has been designed for a 1/2" BSP inlet connection to both hot and cold water supply.
- The mixer may contain or be made from brass, stainless steel, plastic, ceramic, and rubber components.
- Operating specifications - High pressure: min 150kPa - max 500 kPa.
- Temperature: min 2°C - max 60°C (kitchen application), min 2°C - max 50°C (all other areas).