

**RSI18**



## IMPORTANT!

It is essential that you read the instructions in this manual before assembling, operating, and maintaining the product. Subject to technical modifications.

Safety, performance, and dependability have been given top priority in the design of your soldering iron.

## INTENDED USE

The soldering iron is only intended for soldering circuits, electrical connections, jewellery, stained glass, and other crafts.

Do not use the product for any other purposes. Use of the product for operations different from intended could result in a hazardous situation.

## SOLDERING IRON SAFETY WARNINGS

- The product is not intended for use by persons (including children) with reduced physical, sensory or mental capabilities, or lack of experience and knowledge, unless they have been given supervision or instruction concerning use of the product by a person responsible for their safety. Children should be supervised to ensure that they do not play with the product.
- The product is intended for household use only.
- The soldering pen must be placed on its stand when not in use.
- Do not lay a hot soldering iron on its side.
- Do not touch the heated tip of the soldering iron.
- Always assume that the soldering iron tip is hot.
- Use the soldering iron in a well-ventilated area to avoid breathing fumes.
- Do not point the tip of the soldering iron at another person.
- Do not place your hands or fingers near the tip of the soldering iron.
- Never leave the product unattended while it is in the on position.
- The LED indicator will fade on and off slowly for **10** minutes while the tip cools. Do not touch the tip while the LED indicator is solid or fading.
- Always remove the battery pack and allow the soldering tip to cool for a minimum of **30** minutes before removing the tip. Touching a hot soldering tip can result in serious personal injury.
- Always remove the battery pack and allow the product to cool before leaving, transporting or storing. Storing a soldering iron with a hot tip can cause serious burns and/or ignite combustible objects.
- Remove the battery pack from the product before making any adjustments, changing accessories, or storing the product. Such preventive safety measures reduce the risk of starting the product accidentally.
- Do not allow children to use the soldering iron. It is not a toy.
- Do not solder live circuits.
- Do not disassemble the product.
- The soldering iron tip is sharp. Do not touch the tip or allow it to come in contact with anything other than soldering wire and the workpiece material.

## ADDITIONAL BATTERY SAFETY WARNINGS




- To reduce the risk of fire, personal injury, and product damage due to a short circuit, never immerse your tool, battery pack or charger in fluid or allow a fluid to flow inside them. Corrosive or conductive fluids, such as seawater, certain industrial chemicals, and bleach or bleach-containing products, etc., can cause a short circuit.

## TRANSPORTING LITHIUM BATTERIES

Transport the battery in accordance with local and national provisions and regulations.

Follow all special requirements on packaging and labelling when transporting batteries by a third party. Ensure that no batteries can come in contact with other batteries or conductive materials while in transport by protecting exposed connectors with insulating, non-conductive caps or tape. Do not transport batteries that are cracked or leaking. Check with the forwarding company for further advice.

## LED INDICATOR

	Flashing (quickly)	Tip heating up
	Solid	Tip reached working temperature
	Flashing (slowly)	Tip cooling

## MAINTENANCE

- Use only original accessories and spare parts. Should components need to be replaced which have not been described, please contact an authorised service centre. All repairs should be performed by an authorised service centre.
- Avoid using solvents when cleaning plastic parts. Most plastics are susceptible to various types of commercial solvents and may be damaged by their use. Use clean cloths to remove dirt, carbon dust, etc.
- Do not at any time let brake fluids, gasoline, petroleum-based products, penetrating oils, etc., come in contact with plastic parts. Chemicals can damage, weaken or destroy plastic which may result in serious personal injury.

## SYMBOLS ON THE PRODUCT

V Volts



Direct current



Regulatory Compliance Mark (RCM).  
Product meets applicable regulatory requirements.



Please read the instructions carefully before starting the machine.



Hot surface



Hot surface! Do not touch!

Do not dispose of waste batteries, waste electrical and electronic equipment as unsorted municipal waste. Waste batteries and waste electrical and electronic equipment must be collected separately. Waste batteries, waste accumulators, and light sources have to be removed from the equipment. Check with your local authority or retailer for recycling advice and collection point. According to local regulations, retailers may have an obligation to take back waste batteries and waste electrical and electronic equipment free of charge. Your contribution to the reuse and recycling of waste batteries and waste electrical and electronic equipment helps to reduce the demand of raw materials. Waste batteries, in particular containing lithium, and waste electrical and electronic equipment contain valuable and recyclable materials, which can adversely impact the environment and the human health if not disposed of in an environmentally compatible manner. Delete personal data from waste equipment, if any.



## SYMBOLS IN THIS MANUAL



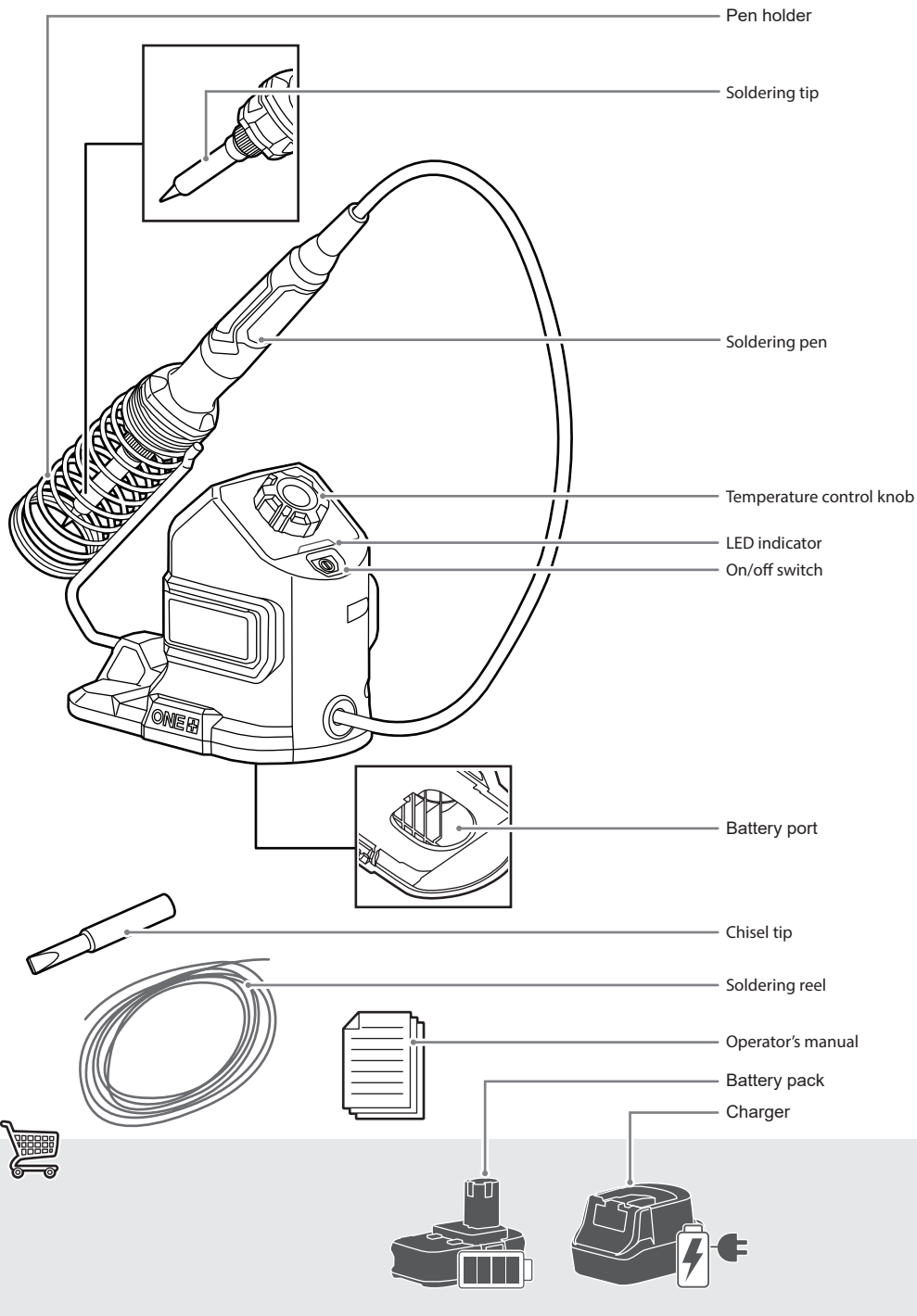
Safety Alert

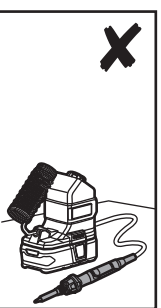
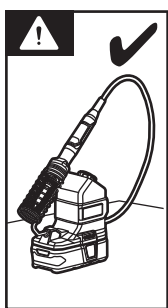
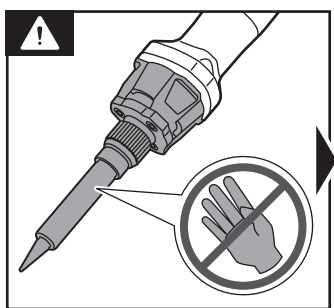
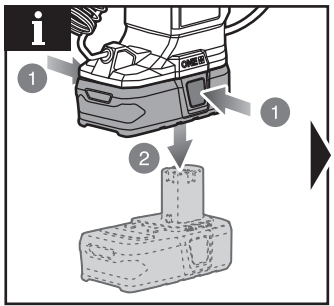
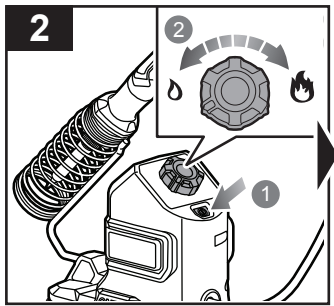
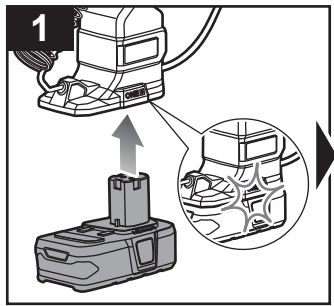


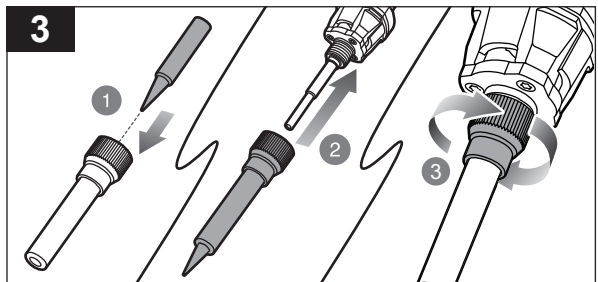
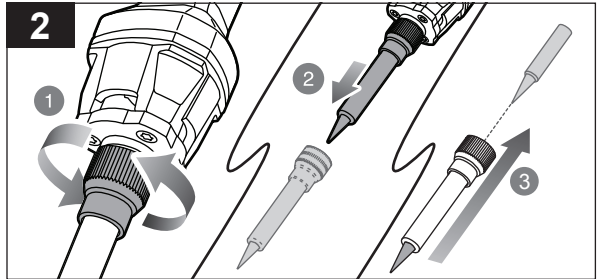
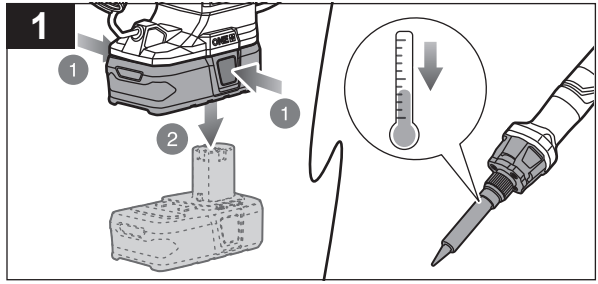
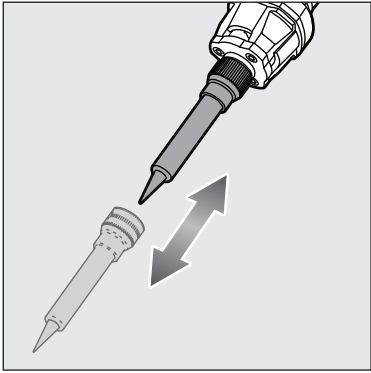
Note



Parts or accessories sold separately








## PRODUCT SPECIFICATIONS

Soldering iron

Model	RS118
Voltage	18 V 
Power consumption	120 W
Working temperature	205 - 480°C
Weight - not incl. battery pack	0.42 kg

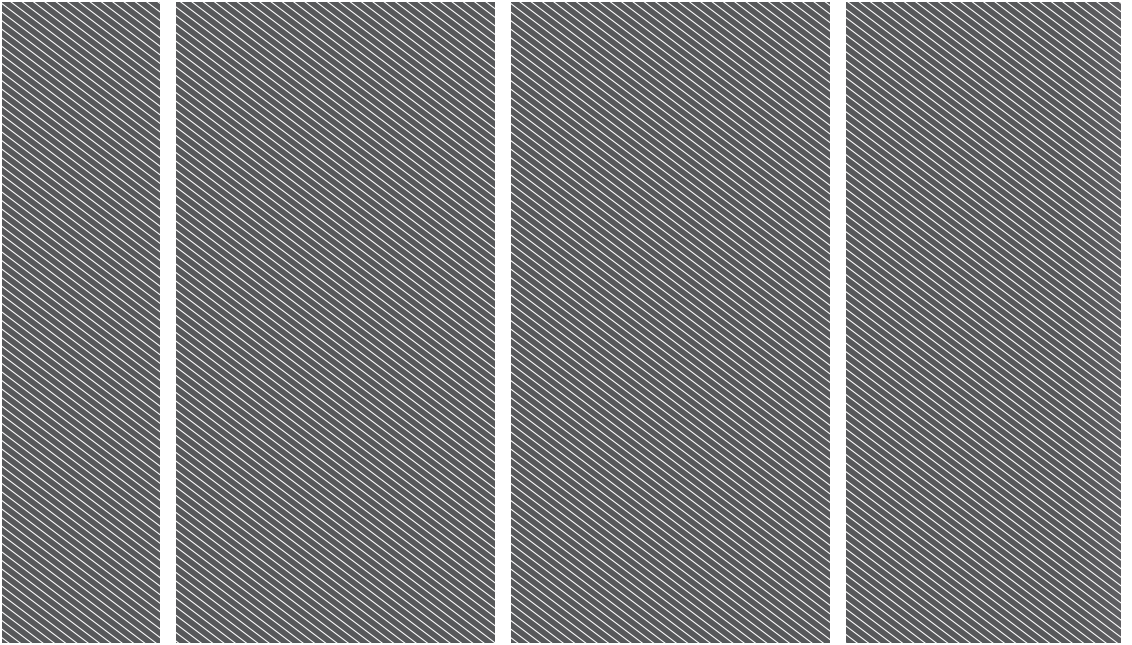
## REPLACEMENT PARTS

Soldering tip	5131042131
Chisel tip	

## BATTERY

Compatible battery pack (not included)

RB18L13	RB18L25	RB18L60A	RB1840X
RB18L15	RB18L25A	RB18L90A	RB1850C
RB18L15A	RB18L40	RB1815C	RB1850X
RB18L15B	RB18L40A	RB1820C	RB1860X
RB18L20	RB18L50	RB1825C	
RB18L20A	RB18L50A	RB1840C	



Imported by:

**Techtronic Industries Australia Pty Ltd**  
31 Gilby Road, Mount Waverley, VIC 3149  
Melbourne, Australia

**Techtronic Industries N.Z. Limited**  
Unit C, 70 Business Parade South,  
Highbrook, Auckland 2013, New Zealand

*RYOBI is a trade mark of Ryobi Limited, and is used under license.*

20220326v1B

