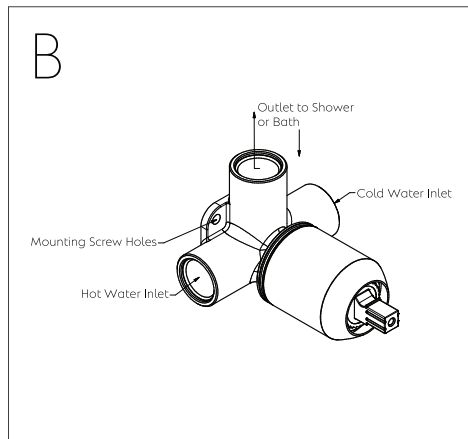
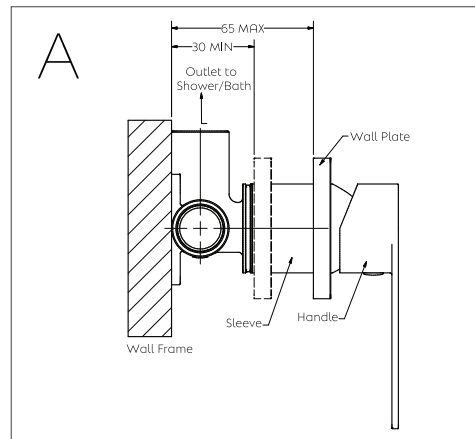


INSTALLATION SPECIFICATION:

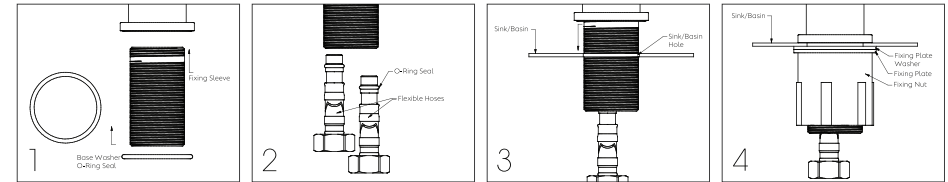
- Product installation to be conducted by a licensed plumber in accordance with Australian standards
- To prevent water hammer please ensure:
 - The pipe length from the outlet does not exceed the standard length
 - The shower is not offset from the rose
 - The rose is not located on a different wall
 - The inlet pressure for hot and cold water is balanced
- Acceptable operating pressure: 150-500 kPa
- The maximum operating pressure at any outlet within a building is 500 kPa as per AS/NZ 3500.1-2003 Clause 3.3.4
- Thoroughly flush piping before installation to prevent foreign materials from damaging internal product

INSTALLATION PROCEDURE:

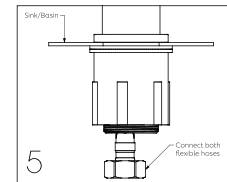
1. Ensure the supply lines are free from foreign materials that could damage the product internal components
2. Mixer should be in a closed position during the installation process
3. Mixer must be installed with the outlet vertically pointing upwards to ensure correct handle orientation
4. Install according to the installation diagram Figure 1 and Figure 2 below
5. Ensure wall plate is firmly against the wall after installation.
6. Install the handle to the product with the handle hex key provided
7. Pressure test the installation examining all connections and fittings prior to closing up
8. Refer to drawing on packaging for installation/product dimensions.

**PRODUCT CARE INSTRUCTIONS:**

- Avoid harsh detergents and acetone silicones when installing as well as abrasive cleaners, as they can scratch the surface or damage the product
- Clean using a soft, dry cloth or a soft cloth with warm soapy water
- Aerators and regulators should be cleaned regularly
- In coastal areas, product surface should not be exposed to direct ocean salt spray
- Ensure product surfaces are cleaned regularly.



1. Screw the fixing sleeve into the mixer base (remove fixing nut, fixing plate and fixing plate washer). Insert the base washer o-ring into the base of the body..
2. Firmly tighten the flexible hoses into the inlet tails at the base of the body, being careful not to damage the o-ring seals. If the hoses have red and blue indicators make sure they are connected to the correct inlet port on the mixer.
3. Feed the hoses through the sink/basin hole, each end alternatively, ensuring that the base washer o-ring seal is between the sink/basin and the mixer base.
4. Position the fixing plate washer, fixing plate and fixing nut onto the fixing sleeve, feeding the hoses through, each end alternatively. Lock the mixer onto the sink/basin by tightening the fixing nut onto the fixing plate.
5. Connect both flexible hoses to the supply line, making sure the hot water is connected to the hot water hose. Ensure the flexible hoses are not stretched, kinked or subject to abrasion. Do not expose the flexible hoses to naked flames or corrosive agents of any kind
6. Prior to introducing the mains water supply, open the lever handle in the mixer position, midway between full hot and full cold. Remove the aerator from the end of the outlet then introduce the mains water to thoroughly flush the supply lines and mixer
7. Reinstall the aerator
8. Check all joints for leaks
9. Refer to drawing on packaging for product dimensions.

**IMPORTANT:**

- Warranty claims WILL NOT be honoured where the ceramic cartridge has failed due to the presence of copper tube pieces, sand, dirt, stones, thread tape or any other objects not normally present in potable water supplies. Refer to warranty card for warranty guidelines
- WELS approved flow regulators are fitted and the mixer should not be attached via the end of the spout to any additional water control device e.g. dishwasher, water filter
- Inspect all parts thoroughly for defects or damage before installation. Warranty claims will be void if the

- product is installed with pre-existing defects
- This product is designed for indoor use and is certified to meet AS/NZ 3718 and AS/NZS 6400 standards
- Installation should be performed by a licensed plumber in accordance with AS/NZ 3500 and any other relevant local, state, and national building codes and regulations. Check these regulations before attempting any DIY work
- Operating specifications:
 - Pressure: min 150 kPa - max 500 kPa, Temperature: min 2°C - max 50°C.

INSTALLATION REQUIREMENTS:

This installation must comply with the regulations of the relevant authority, the National Construction Code Volume Three - Plumbing Code of Australia, and any applicable

reference standards at the time, including AS/NZS 3718. Any flow regulator in the outlet should be securely tightened to prevent removal by hand.

Mondella

THANK YOU FOR PURCHASING ONE OF OUR QUALITY MONDELLA PRODUCTS.

Please keep your receipt as proof of purchase, as this will authenticate your warranty. Any claim under this warranty must be made within the warranty period from date of purchase of the product. To make a claim under the warranty, take the product (with proof of purchase) to any Bunnings store (see www.bunnings.com.au or www.bunnings.co.nz for store locations) or contact Blutide Pty Ltd. Blutide Pty Ltd bears reasonable, direct expenses of claiming under the warranty. You may submit details and proof to Blutide Pty Ltd for consideration. The warranty covers manufacturer defects in materials, workmanship and finish under normal use. This warranty is provided in addition to other rights and remedies you may have under law: our goods come with

guarantees which cannot be excluded under the Australian Consumer Law (ACL) or the New Zealand Consumer Guarantees Act (CGA). You are entitled to replacement or refund for a major failure and to compensation for other reasonably foreseeable loss or damage. You are also entitled to have the goods repaired or replaced if the goods fail to be of acceptable quality and the failure does not amount to a major failure. The warranty excludes damage resulting from product misuse or product neglect. The warranty covers domestic use only and does not apply to commercial applications. This warranty is given by Blutide Pty Ltd, ABN 39 669 825 003, P.O.Box 535, Elsternwick, Vic, Australia, 3185, phone number: 1300 900 213, service@blutide.com.

WARRANTY PERIODS

MIXERS, TAPWARE, TOILETS & SHOWERS

- 10 years replacement cartridge
- 10 years replacement product or parts
- 5 years replacement flexible mixer hoses
- 1 year replacement product or parts and labour

OTHER ITEMS

- 10 years replacement product or parts

The warranty covers domestic use only and does not apply to commercial applications.

AFTERMARKET SERVICE PROCEDURE

Please email service@blutide.com and include the following information: proof of purchase, item number and product description, installing person's name and contact details.

PRODUCT WARRANTY

WARRANTY SHALL BE VOID FOR THE FOLLOWING REASONS:

- Inability to provide proof of purchase.
- Plumbing products not installed by a licensed plumber.
- Products not installed to relevant local, national and state regulations.
- Products not installed in accordance with the manufacturer's installation instructions.
- Fitting of other devices to the outlet of the tapware, e.g. water filters.
- Fitting of non-approved flow controllers in tap bodies or end of the line devices.
- Products used for incorrect applications, non-portable water etc.
- Damage as a result of obstructions due to inadequate flushing of system before use.
- Service or repairs with non-standard replacement parts previously undertaken without written approval.
- Damage to finishes by adhesive, sealant etc.
- Damage to product and/or components due to exposure to caustic or corrosive substances or environments.
- Damage to flexible mixer hoses due to exposure to caustic or corrosive substances or environments.
- Failure to clean and replace outlet aerator inserts etc.
- Any damage which arises from installation or post-installation use.
- Relevant products are exposed to water pressure and or temperatures that exceed the following limitations:
 - Maximum Temperature: 75 degrees;
 - Maximum Pressure: 500kPa;
 - Minimum Temperature 1 degree;
 - Minimum Pressure: 150kPa (300kPa for shower / Bath Diverter)

Note: AS/NSZ 3500.1-2018 (Clause 3.3.4) Specifies 500kPa maximum water supply pressure at any outlet within a building for new installations.

The warranty work is limited to the pre-approved work by Blutide Pty Ltd.

Warranty claims for labour undertaken will only be honoured if the work is conducted by a licensed tradesperson as defined by local, state or national regulations.