



PRODUCT FEATURES:

- Stainless steel tubing
- Surface mounted
- Matte black seat and frame
- White laminate seat option available
- Self locking mechanism
- AS 1428.1 disabled compliant

Overall Dimensions

970mm W x 357mm D

PRODUCT DATA:

CONSTRUCTION:

FRAME: Fabricated of 25mm dia. type 304 (18-8), 18 gauge matt black finish stainless steel tubing. All welded construction with burr free edges.

WALL BRACKET: Fabricated of type 304, 16 gauge stainless steel with stainless steel piano hinges.

RETAINING BRACKET: Fabricated of 16 gauge stainless steel. Positive bullet-type catch holds seat securely in up or down position.

SEAT: Fabricated of 8mm thick solid plastic (matt black) laminate, made of coloured melamine bonded under high pressure to a phenolic core. All exposed edges are machined smooth to a uniform dark finish.

OPERATION:

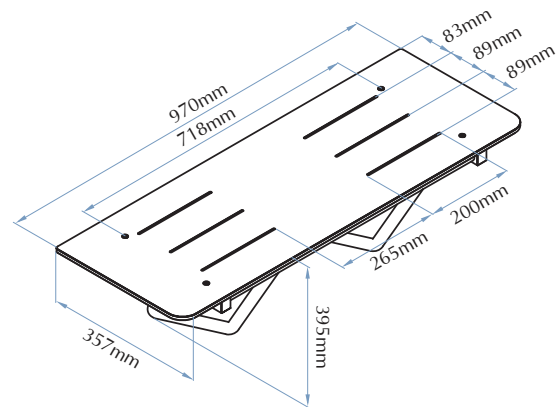
Hinged seat folds up and out of the way when not in use. When properly installed, seat can support up to 250kg static load.

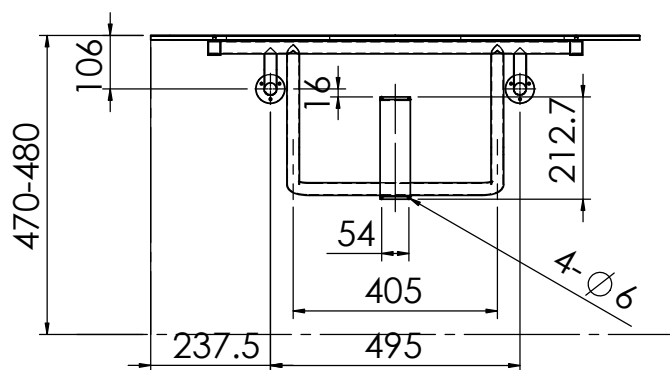
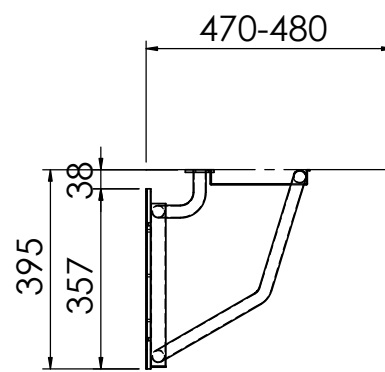
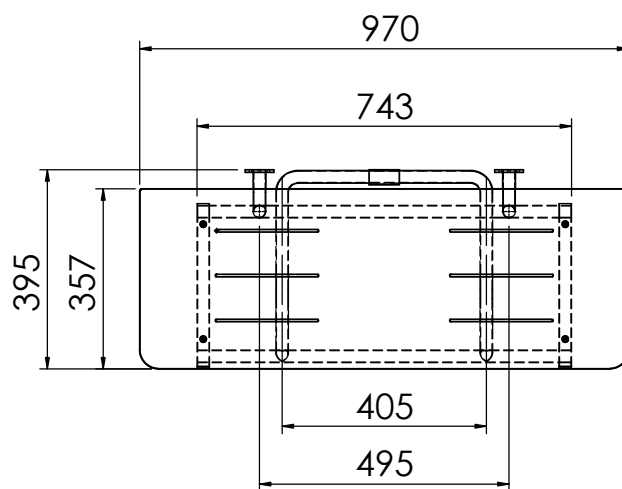
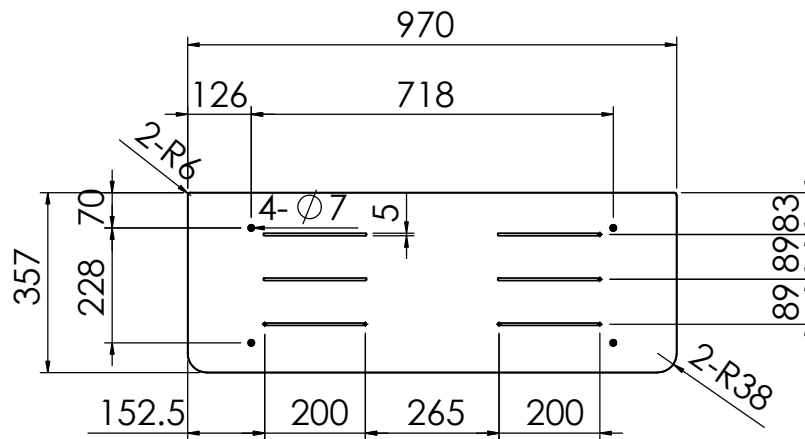
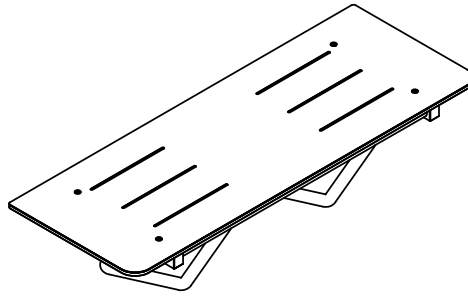
INSTALLATION:

Provide concealed backing or anchors as specified by architect before finished wall is applied. Secure to wall with mounting screws (included) at holes provided. Mount the unit so the top of the seat is 470mm to 480mm above the finished floor.

GUIDE SPECIFICATION:

Folding plastic laminate shower seat shall be fabricated of 8mm thick melamine bonded to a phenolic core secured to a stainless steel frame of 25mm diameter, 18 gauge tubing. Wall bracket of 16 gauge stainless steel with heavy duty hinges. Shower seat shall comply with AS 1428.1





Bradley

DWG NO. 9562-40-MB

APPROVED BY:

Proudly customised design please approve

SCALE: 1:15