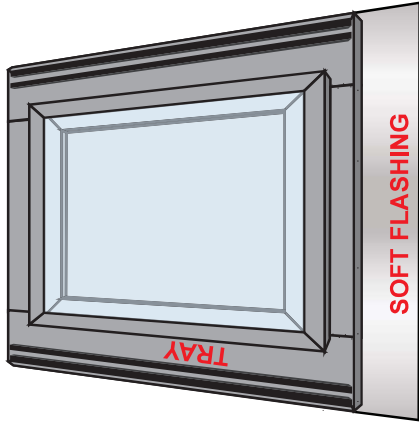


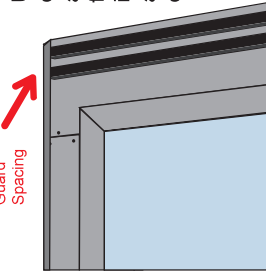
Roof Window Installation Instructions for Tile Roof

Clean down tray with **Methylated Spirits** or solvent to ensure foam guards stick and hold correctly.

Fold up soft flash from underneath the tray



25mm
Guard
Spacing



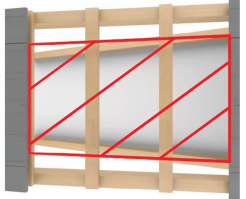
Using foam supplied create 2 water guards along either side of the flashing, 1st strip 25mm in from edge of tray and the 2nd strip 25mm closer to the window.



Decide installation location by inspecting roof cavity. Try to avoid obstructions such as hanging beams, under purlins, ect.

When satisfied with location, making sure your roof window is going to fit remove tiles from the intended location.

Cut tile battens out

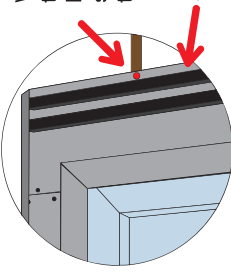


Position window so Soft Flash is located over bottom row of tiles. Window can be fixed into place by driving tech-screws (not provided) through flashing on the outside strip of foam tape into battens underneath



When screwing down the window to the batten make sure you screw to the outside of the foam gutter

25mm spacing between foam gutters



Knock off any lugs on bottom of tiles that will prevent them from sitting flat on metal flashing tray
With an angle grinder trim tiles to within 40mm of awning. Ensure there is no fouling when the window is opened.



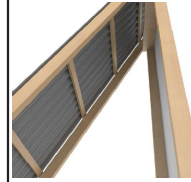
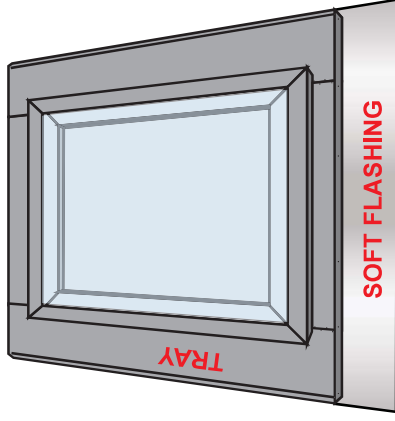
Roof Window Installation Instructions for CGI Roof

1800 010 566

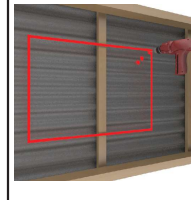
© Copyright 2019

ACOL
CREATIVE SKYLIGHT SOLUTIONS

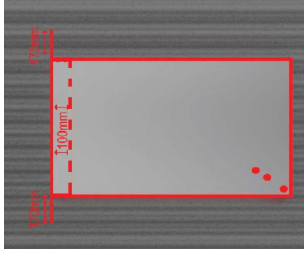
Fold up soft flash from underneath the tray



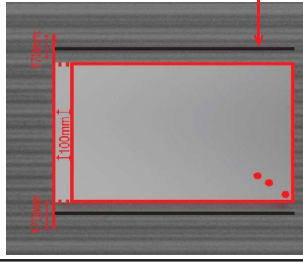
Decide location for skylight by inspecting inside roof cavity. Try to avoid obstructions such as hanging beams under purlins, etc. whenever possible.
**Avoid installing over laps in sheets. If this cannot be avoided, you must seal to highest point of laps, i.e. ridge*



When satisfied with location, drill a hole in a bottom corner of **frame** position. Drill two holes above it to indicate direction of window from your marker.

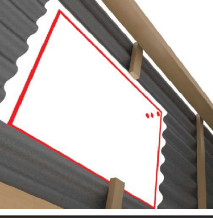


From outside of roof, using marker line as starting point, measure the width of window **plus** 20mm. Measure the height of window **plus** an extra 100mm. Extend the top line 170mm on **both**.
After marking your penetration now cut out along the solid red line, including 170mm slits as shown.

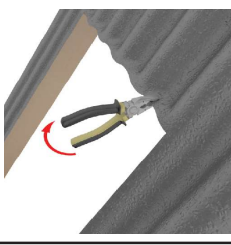


Locate the crest of the CGI profile closest to the cut-out and wipe down with **Methylated Spirits** to ensure foam guards stick and hold correctly.
Apply foam tape supplied down both sides full length as shown

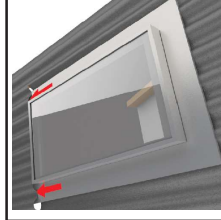
Foam tape before fitting tray



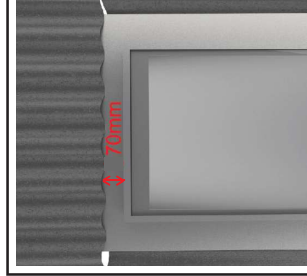
Cut batten if it happens to land over window cut out.



Weather up the corrugations on the low side of the cutout by folding the low spots with pliers.



Slide the soaker tray up under the extended horizontal cut; rest the soaker tray on roof in position.

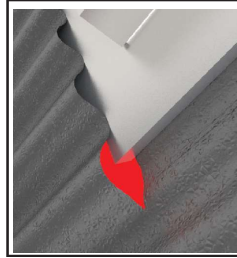


Leave 70mm of the soaker tray exposed at the top.

Fix window into position using roof screws making sure you screw into top of rib of the corrugation. (Must use screws with rubber seal as pictured)



(not provided)



Using silicon, seal the extended horizontal cuts.

1800 010 566

© Copyright 2019

ACOL
CREATIVE SKYLIGHT SOLUTIONS