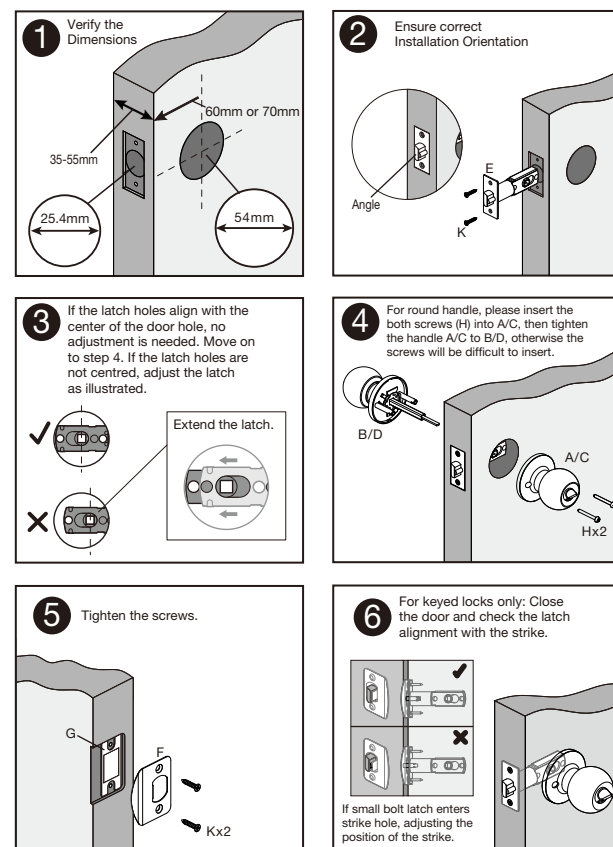
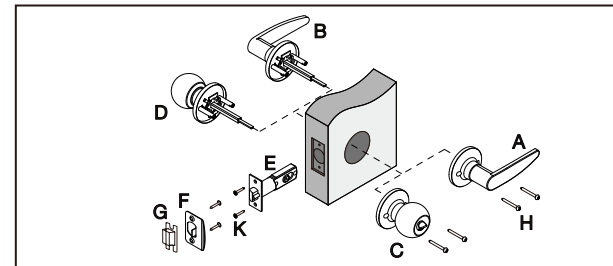


ikönic™

Knob/Lever Quick Installation Guide



TO ENSURE CORRECT INSTALLATION - LATCH, ROSETTE AND SPINDLE MUST ALIGN AS PER INSTRUCTIONS. FAILURE TO DO SO CAN RESULT IN PRODUCT MALFUNCTION.

⚠ WARNING: No lock can guarantee complete security on its own. This lock may be bypassed through force, technical methods, or by accessing other entry points on the property. Security also depends on your vigilance, awareness of your surroundings, and the use of common sense. Builder's hardware comes in various performance grades to match specific applications. To enhance security and minimize risks, consult a qualified locksmith or security professional.

Any claim under this warranty must be made within 3 years of the date or purchase of the product. To make a claim under the warranty, take the product (with proof of purchase) to any Bunnings store (see www.bunnings.com.au or www.bunnings.co.nz for store locations). Bunnings Group Ltd bears reasonable, direct, expenses of claiming under the warranty. You may submit details and proof to our store for consideration.

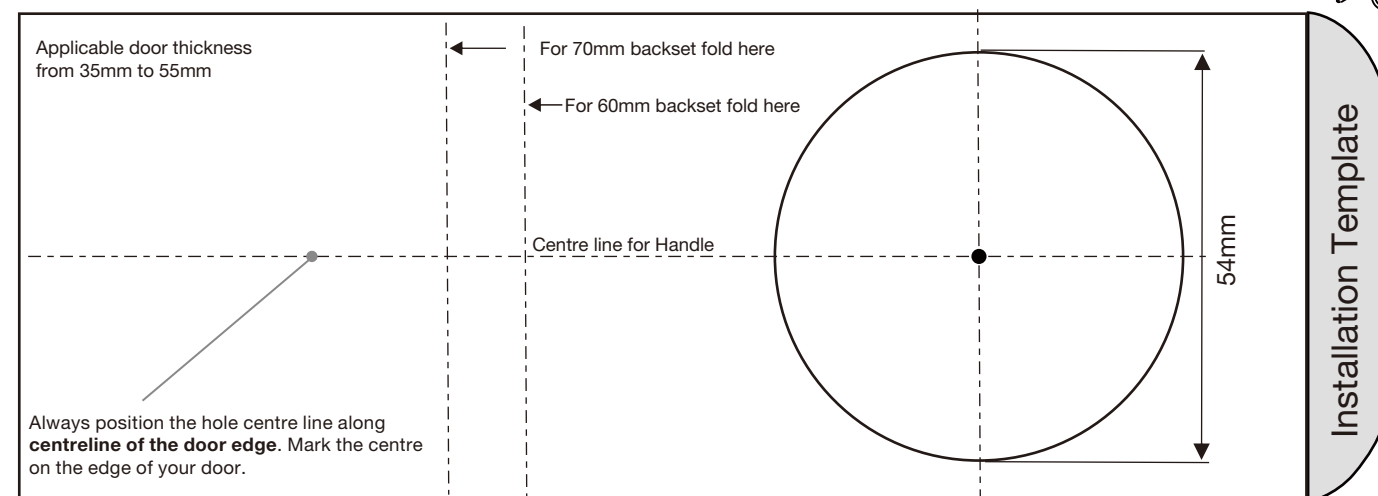
The warranty covers manufacturer defects in materials, workmanship and finish under normal use. This warranty is provided in addition to other rights and remedies you may have under law: our goods come with guarantees which cannot be excluded under the Australian Consumer Law. You are entitled to replacement or refund for a major failure and to compensation for other reasonably foreseeable loss or damage. You are also entitled to have the goods repaired or replaced if the goods fail to be of acceptable quality and the failure does not amount to a major failure. The warranty excludes damage resulting from product misuse or product neglect. The warranty covers domestic use only and does not apply to commercial applications.

This warranty is given by Bunnings Group Limited
ABN 26 008 672 179, Botanicca 3, Level 2 East Tower 570
Swan Street, Burnley, VIC 3121,
e-mail: CustomerSupport@bunnings.com.au, PH: 1800 797 586.
Bunnings NZ Limited: PO Box 14436, Panmure Auckland 1741,
e-mail: OnlineEnquiries@bunnings.co.nz PH: 1800 797 586

Item No. 0755268/0755200/0755236/0755208/0755244/0755232/
0755150/0755171/0755149/0755194/0755265/0755229/0755227/
0755257/0755245/0755238/0755153/0755176/0755148/0755202/
0755259/0755223/0755215/0755253/0755240/0755261/0755162/
0755204/0755157/0755267/0755243/0755217/0755249/0755220/
0755182/0755155

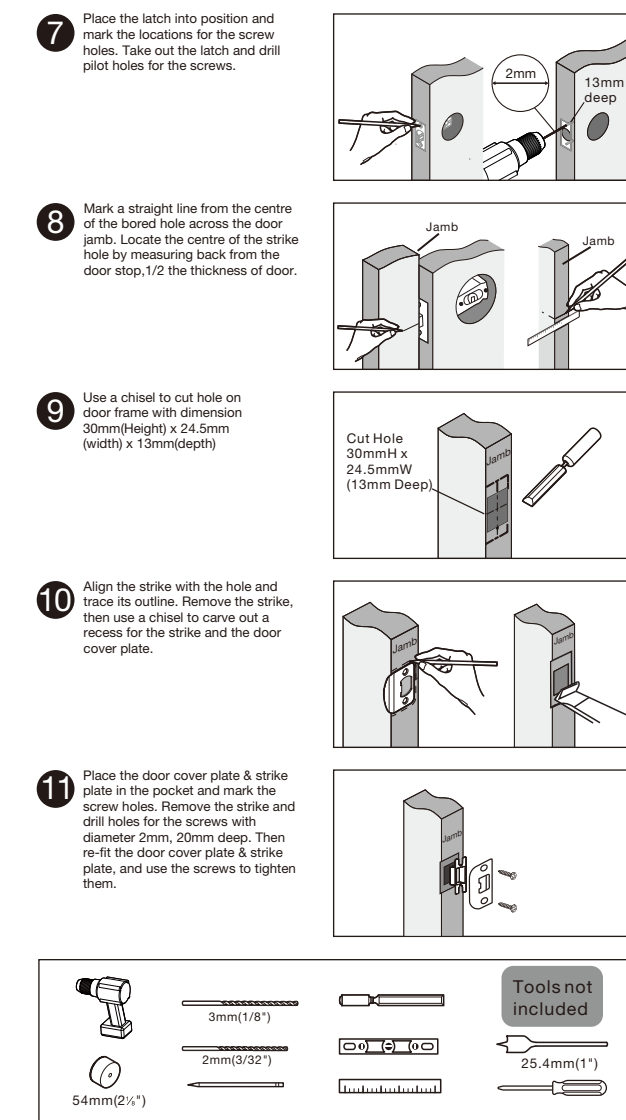
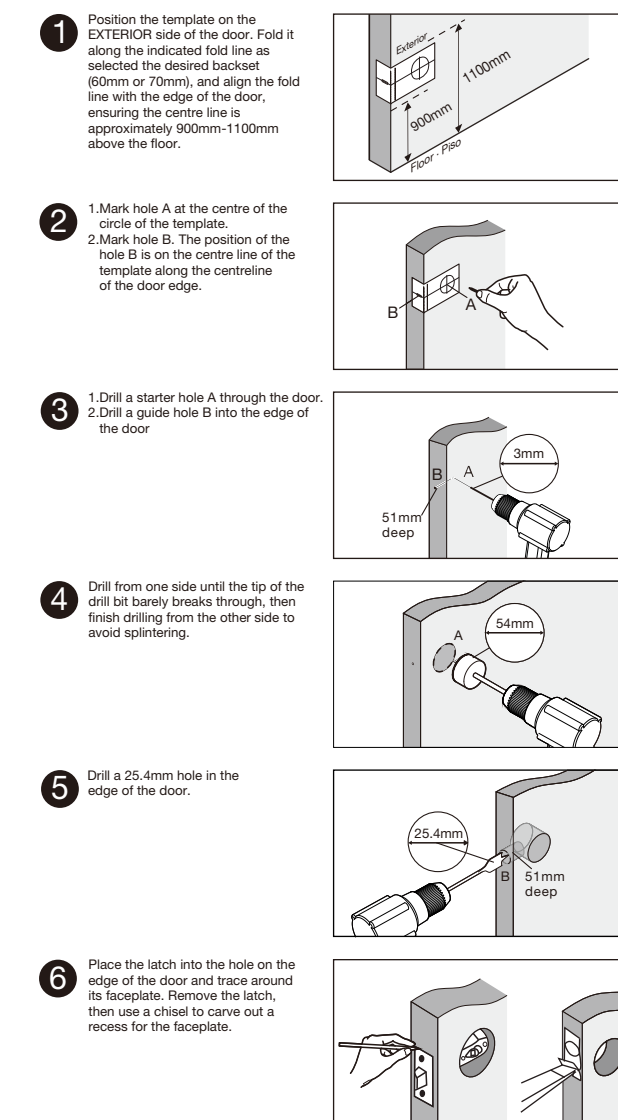
Please note!

This entrance, privacy or passage knob/lever set is designed for use on doors that open to the left or right. Please ensure that all screws are tightened by hand rather than using an electric screwdriver or drill, excessive tightening is not advisable.



ikönic™

Drilling Instructions(if required)



⚠ SAFETY TIP:
When assembling or installing this product wear protective gloves and eyewear.

About Maintenance
Keep the cylinder clean. If the key lock needs lubrication, avoid using oil (it is preferable to use graphite powder). To ensure the latch functions well, remove it occasionally and apply a small amount of grease to extend its lifespan.

