

Strol

PebbleLock

Installation Guidelines

G 129 002

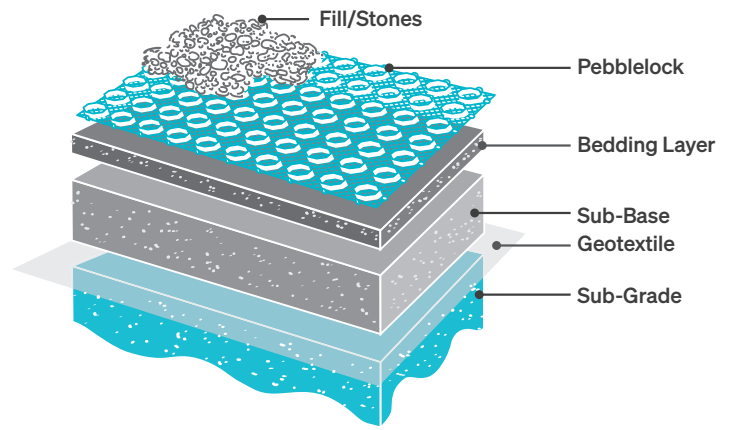
Issue No.: 01

August 2020



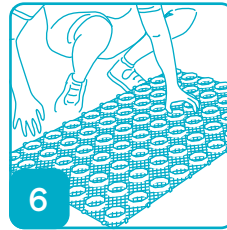
PebbleLock

Installation Instructions



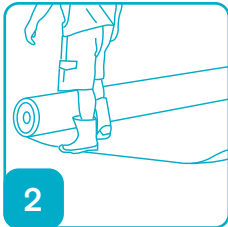
Prepare the Foundation

Remove existing vegetation, excavate to hard ground / clay and prepare base course.



Lay PebbleLock Pavers

Lay the PebbleLock pavers on the bedding layer working from left to right and joining with the connecting clips. Avoid standing on the Pebblelock pavers and ensure they clip together correctly. Trim to shape with a hand or circular saw, or similar, where required.



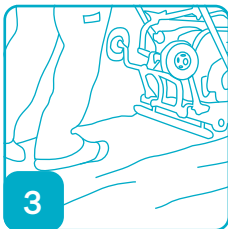
Lay Geotextile

Line the excavated area with a geotextile to provide extra stability.



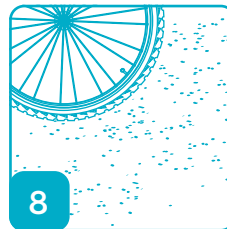
Fill the Pebblelock Pavers

Fill the pavers with 8-14mm pebbles and rake to evenly distribute over the pavers until the pebbles exceed the height of the cell wall by 10-15mm and are level.



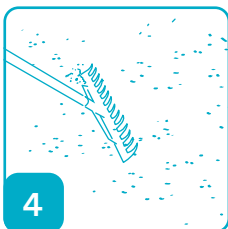
Prepare the Foundation Foundation should be:

- Paths: a 50mm well compacted layer of GAP 40 or GAP20 road base.
- Driveways/Carparks: a 100mm – 150mm well compacted layer of GAP 40 or GAP 20 road base.



Finished!

The surface may be trafficked immediately



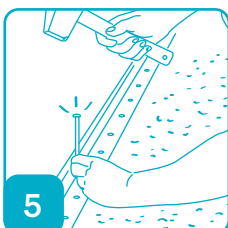
Add Bedding Layer

Evenly spread a 10mm bedding layer of crusher dust or clean, sharp sand over the road base. This does not need compaction.



Maintenance

Maintenance is limited to sweeping or raking occasionally and removing leaves and other debris.



Install Edging Restraints

If required, install edging restraints or curbing of your choice.

ENHANCING TOMORROW / +612 9066 6716 / STROL.COM.AU

Strol

DISCLAIMER

All information provided in this brochure is correct to the best knowledge of the company and is given out in good faith. The information presented herein is intended only as a general guide to the use of such products and no liability is accepted by Strol Ltd for any loss or damage however arising, which results either directly or indirectly from use of such information. Strol Ltd have a policy of continuous development therefore information and product specifications may change without notice. This brochure is subject to copyright in its entirety. The contents may not be reproduced in any form, either in whole or in part, without written permission from Strol Ltd. While every effort has been made to ensure the accuracy of the information in this brochure, Strol Ltd assumes no responsibility for errors or omissions or for any consequences of reliance on this catalogue. Copyright 2017. All rights reserved.