

RPGENINV4K



IMPORTANT!

It is essential that you read the instructions in this manual before assembling, operating, and maintaining the product.

Subject to technical modification.

Safety, performance, and dependability have been given top priority in the design of your generator.

INTENDED USE

The generator is designed to supply electrical power for operating compatible electrical lighting, appliances, tools, and motor loads.

Do not use the product to provide power for emergency medical equipment or life support devices.

Do not use the product to jump start vehicles. Doing so could result in damage to the vehicle or its electrical components.

Do not use the product for any other purpose.

GENERAL SAFETY WARNINGS

⚠ WARNING! Carbon Monoxide. Using the product indoors can cause death in minutes.

The product exhaust contains high levels of carbon monoxide (CO), a poisonous gas that you cannot see or smell. If you can smell the product exhaust, you are breathing CO. But even if you cannot smell the exhaust, you could be breathing CO.

- Never use the product inside homes, garages, crawlspaces, or other partly enclosed areas. Deadly levels of carbon monoxide can build up in these areas. Using a fan or opening windows and doors does not supply enough fresh air.
- Use the product only outdoors and far away from open windows, doors, and vents. These openings can pull in the product exhaust.

Even when you use the product correctly, CO may leak into your home. Always use a battery-powered or battery-backup CO alarm in your home.

If you start to feel sick, dizzy, or weak after the product has been running, turn off the product and move to an area with fresh air right away. See a doctor. You could have a carbon monoxide poisoning.

⚠ WARNING! Read and understand all instructions. Failure to follow these warnings and instructions may result in electric shock, fire, and/or carbon monoxide poisoning, which can cause death or serious injury.

⚠ WARNING! Before using the ground terminal, consult a qualified electrician to comply with the intended use of the product.

Do not use the product in flammable surroundings.

Save these instructions. Refer to them frequently and use them to instruct others who may use this tool. If you loan someone this tool, loan them these instructions also.

This manual contains important instructions that should be followed during the installation and maintenance of the product.

- Do not connect the product to a building's electrical system unless the product and the transfer switch have been properly installed, and the electrical output has been verified by a qualified electrician. The connection must isolate the product power from utility power and must comply with all applicable laws and electrical codes.
- Do not allow children or untrained individuals to use the product. Protect children by keeping them at a safe distance from the product.
- Do not start the product in a confined space, building, near open windows, or in other unventilated space where dangerous carbon monoxide fumes can collect. Carbon monoxide, a colourless, odourless, and extremely dangerous gas, can cause unconsciousness or death.
- Never start or run the product inside a closed or partially enclosed area. Breathing exhaust fumes will kill you.
- Keep all parts of your body away from any moving parts and all hot surfaces of the product.
- Wear eye and hearing protection when operating the product.
- Wear sturdy and dry shoes or boots. Do not operate the product while barefoot.
- Keep all bystanders, children, and pets at least 3 m away.
- Do not operate the product while you are tired, ill, or under the influence of drugs, alcohol, or medication.
- Product users in some countries, must comply with fire prevention regulations. The product is equipped with a spark arrestor.
- Do not touch bare wire or receptacles.
- Before each use, make sure to check the product wiring, sockets, and connectors for damage. Do not use the product if any of these parts are damaged.
- To reduce the risk of fire and burn injury, handle fuel with care. It is highly flammable.
- Do not smoke while handling fuel or when filling the product with fuel. Do not refuel when near naked flames.
- Do not refuel the product while operating. Position the product on level ground, turn off the product, and allow it to cool down before refuelling.
- Mix and store fuel in a container approved for fuel.
- Mix fuel outdoors where there are no sparks or flames. Wipe up any fuel spillage. Move 9 m away from refuelling site before starting engine.
- Turn off the product and allow it to cool down before refuelling or storing the unit.
- Use only authorised replacement parts and accessories and follow instructions in the maintenance section of this manual. Use of unauthorised parts or failure to follow the maintenance instructions may create a risk of shock or injury.
- Inspect the product before each use for loose fasteners and fuel leaks. Replace damaged parts.
- The product vibrates in normal use. During and after the use of the product, inspect the product as well as extension cords and power supply cords connected to it for damage resulting from the vibration. Have the damaged items repaired or replaced as necessary. Do not use plugs or cords that show signs of damage, such as broken or cracked insulation.

GENERATOR SAFETY WARNINGS

⚠ WARNING! When the product is used to supply a building wiring system, the product must be installed by a qualified electrician and connected to a transfer switch as a separately derived system. The product shall be connected through a transfer switch that switches all conductors other than the equipment grounding conductor. The frame of the product shall be connected to an approved grounding electrode. Failure to isolate the product from the power utility can result in death or injury to electric utility workers.

- Exhaust fumes contains poisonous carbon monoxide, a colourless, odourless gas. Breathing exhaust fumes can cause loss of consciousness and can lead to death. If running in a confined or partially-enclosed area, the air may contain a dangerous amount of carbon monoxide. To keep exhaust fumes from building up, always provide adequate ventilation.
- Position the product on a flat, stable surface with a slope of no more than 4°. Avoid long extension lines and possible damage to lines by pedestrian or vehicular traffic.
- Operate the product outdoors in a well-ventilated, well-lit area isolated from working areas to avoid noise interference.
- Operating the product in wet conditions could result in electrocution. Keep the product dry.
- Keep the product a minimum of 1 m away from all types of combustible material.
- Do not touch the muffler or cylinder during or immediately after use; they are hot and will cause burn injury.
- Do not allow the fuel tank to overflow when filling. Fill to 25 mm (1") below the top neck of the gas tank to allow for fuel expansion. Do not cover the fuel tank cap when the engine is running. Covering the fuel tank cap during use may cause engine failure and/or damage to the tool.
- Allow the product to remain in an off condition for at least five minutes before adding fuel or oil.
- Do not remove the oil dipstick or the fuel tank cap when the product is running.
- Pay close attention to all safety labels located on the product.
- The product operates best in temperatures between -5°C and 40°C with a relative humidity of 90% or less.
- Check the operating voltage and frequency requirement of all electronic equipment before connecting them to the product.
- Operation of the product at altitudes above 1,000 m may require retuning. Contact an authorised service centre.
- When using extension lines or mobile distribution networks, the total length of lines for a cross section of 1.5 mm² should not exceed 60 m. For a cross section of 2.5 mm², this should not exceed 100 m.
- Use only AS/NZS 60245-4 compliant rubber insulated cords.
- Maintain normal safety precautions with appliances and accessories as for use on normal reticulated normal supply.
- The product must not be connected to other power sources except with the accessory advised by the manufacturer or other products with the same model.

FUEL AND REFUELLING

- Allow the product to cool down for five minutes before refuelling.
- Loosen the fuel cap slowly to release pressure and to keep fuel from escaping around the cap.
- Tighten the fuel cap securely after refuelling.
- Wipe spilled fuel from the product.
- Never attempt to burn off spilled fuel under any circumstances.
- Store fuel in a container approved for petrol.

MAINTENANCE

- When servicing, use only original replacement parts. Use of any other parts could create a hazard or cause product damage.
- Service and maintenance require extreme care and knowledge and should be performed only by a qualified service technician. For service and repair, contact an authorised service centre.
- You may only make adjustments and repairs described in this manual. For other repairs, contact an authorised service centre.
- Before performing any maintenance, turn off the product and ensure that the start lever is in the off position. Ensure that the product has cooled down. Failure to heed this warning could result in serious personal injury or could damage the product.
- Protection switches or circuit breakers are vital for safety and may only be replaced by an authorised service centre.
- Keep the product in a clean and dry environment where it is not exposed to dust, dirt, moisture, or corrosive vapours. Do not allow the cooling air slots in the product to become clogged with foreign materials, such as leaves, snow, etc.
- Do not use a garden hose to clean the product. Water entering the fuel system or other internal parts of the product can cause problems that decrease the life of the product.
- Engine oil is a major factor affecting engine performance and service life. Check the oil level before each use with the product turned off and on a level surface. Use only SAE 10W-30 engine oil. Non-detergent and 2-stroke engine oils will damage the product.

TRANSPORTATION AND STORAGE

- Turn off the product, allow it to cool down, and empty the fuel tank before storing or transporting.
- Set the start lever in the off position.
- Keep the product level to prevent fuel spillage.
- Do not drop or strike the product or place under heavy objects.
- Store the product in a well-ventilated area with the fuel tank empty. Fuel should not be stored near the product.
- Empty the fuel tank, turn the start lever to the off position, and restrain the product from moving before transporting in a vehicle.
- Secure the product from moving before transporting in a vehicle.

SYMBOLS ON THE PRODUCT



Safety alert



Read and understand all instructions before operating the product. Follow all warnings and safety instructions.



Risk of fire. Do not add fuel while the product is operating.



The product is a potential source of electric shock. Do not expose the product to moisture, rain, or snow. Do not operate the product with wet hands or feet.



Exhaust contains poisonous carbon monoxide gas that can cause unconsciousness or death. Do not operate in a confined area where exhaust gases, smoke, or fumes could reach dangerous concentrations. Operate the product in well-ventilated, outdoor areas away from open windows or doors.



Hot surface and exhaust



Regulatory Compliance Mark (RCM). Product meets applicable regulatory requirements.



Waste electrical products should not be disposed of with household waste. Please recycle where facilities exist. Check with your local authority or retailer for recycling advice.



Do not expose the product to rain or damp conditions.

SYMBOLS IN THIS MANUAL



Parts or accessories sold separately

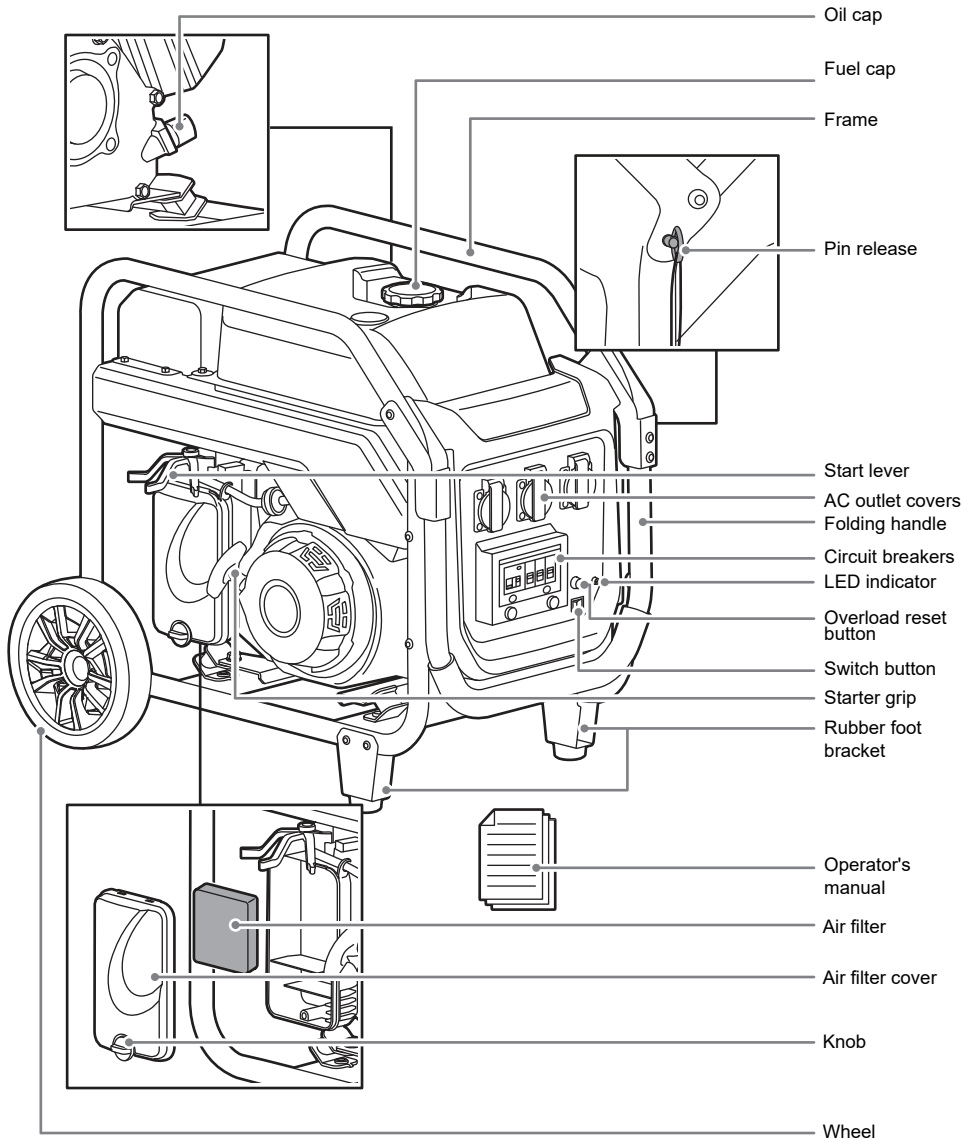


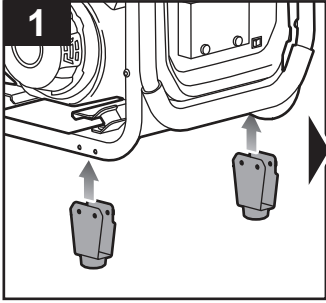
Note



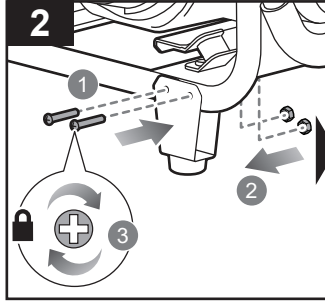
Warning

RPGENINV4K

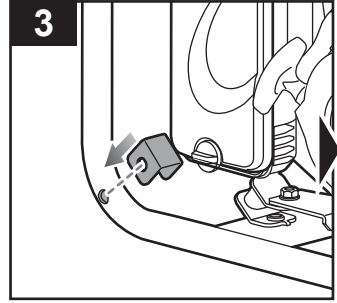




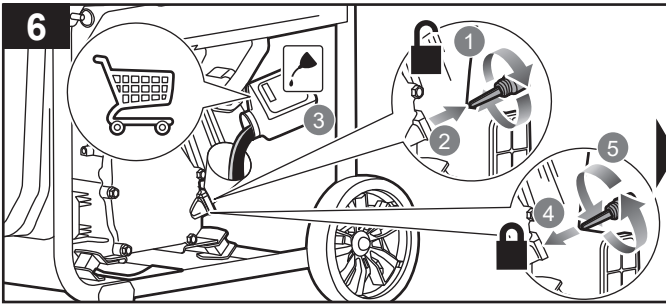
1
Align the rubber foot bracket with the holes in the frame.



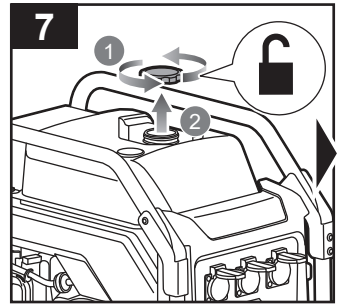
2
Insert bolts through the rubber foot bracket, then through the frame. Thread lock nuts onto the bolts and turn clockwise to tighten.



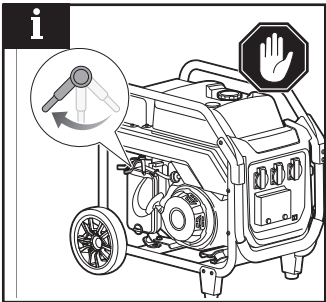
3
Position the axle on the frame so that it aligns with the hole in the frame.



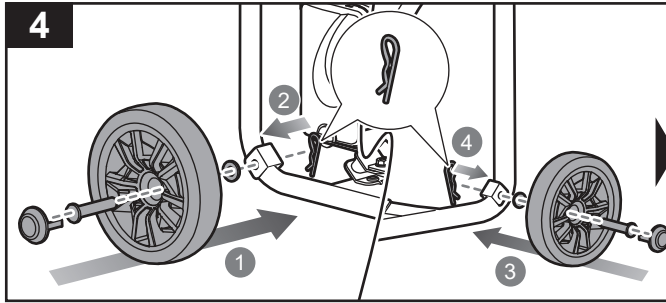
6
Remove the oil cap. Add lubricant as needed. Close and secure the oil tank.



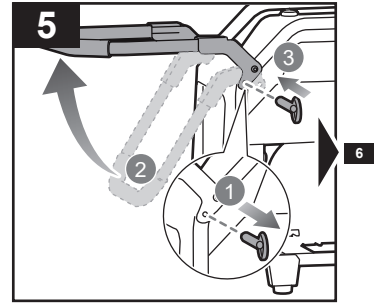
7
Turn the fuel cap counterclockwise to open the fuel tank.



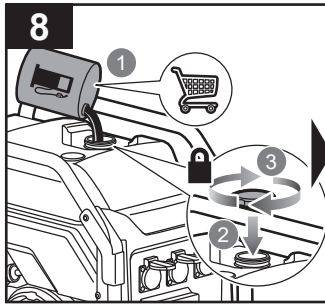
i
NOTE: Turn the start lever to the OFF position to turn off the product.



Slide a washer onto the axle, then slide the axle into the wheel mounting hole. Insert the hitch pin to secure the wheel and axle. The hitch pin should be pushed into the axle until the center of the rest is on top of the axle. Repeat the same procedure for the second wheel.

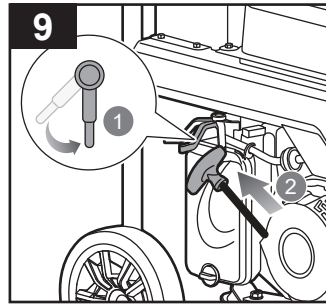


Remove the pin release to unlock the handle. Lift the handle, then reattach the pin release to lock the handle in place.



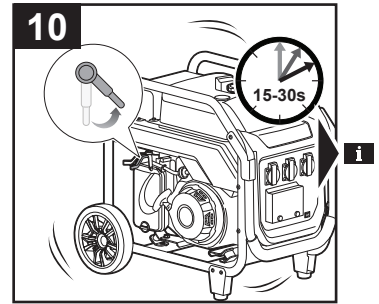
Fill the fuel tank with fuel. Turn the the fuel cap clockwise to close the fuel tank.

NOTE: Do not allow the fuel tank to overflow when filling. Fill to 25 mm (1") below the top neck of the gas tank to allow for fuel expansion.



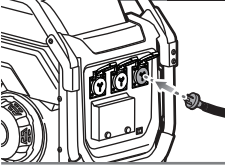
Turn the start lever to the START position. Pull the starter grip until the engine runs.

NOTE: Do not allow the starter grip to snap back after starting. Return it gently to its original place.

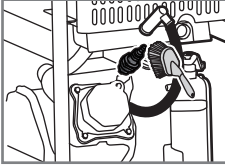


Allow the product to run for 15-30 seconds, then turn the lever to the RUN position.

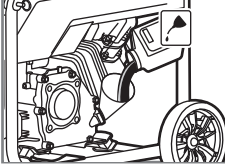
Using the AC outlets and Overload reset switch **p.9**



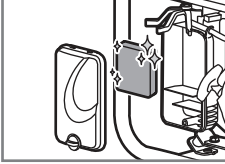
Maintaining the spark plug **p.12**



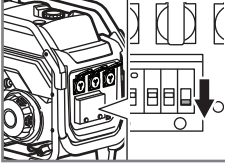
Changing engine lubricant **p.13**



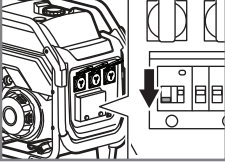
Cleaning the air filter **p.14**



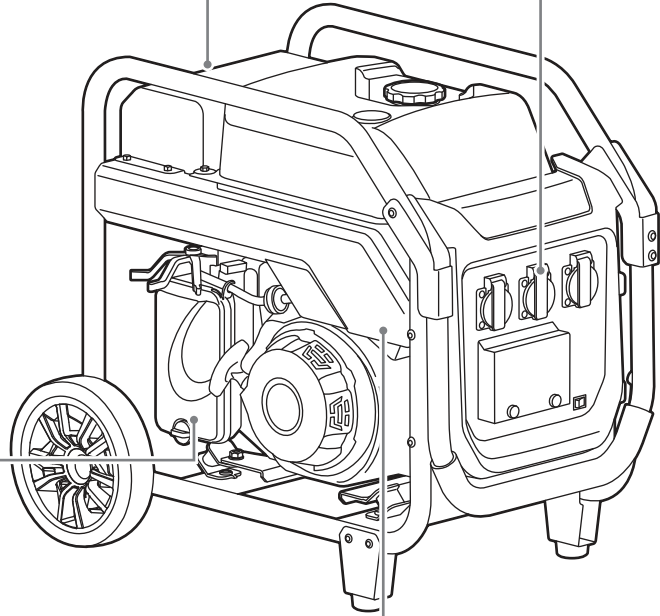
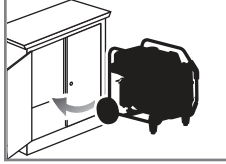
Operating the single output switch **p.10**

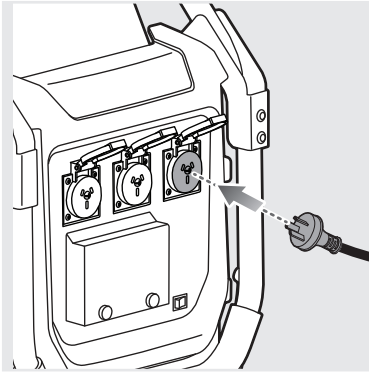


Operating the main output switch **p.11**



Cleaning and storing the product **p.15**



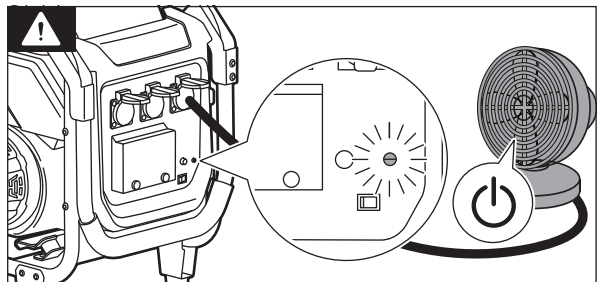
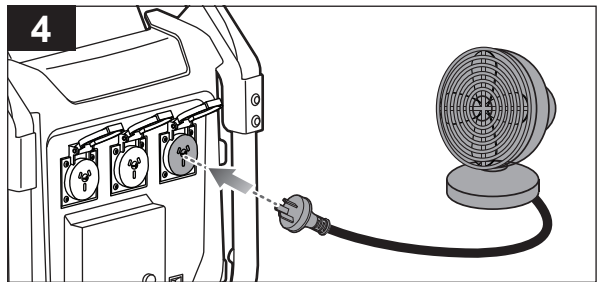
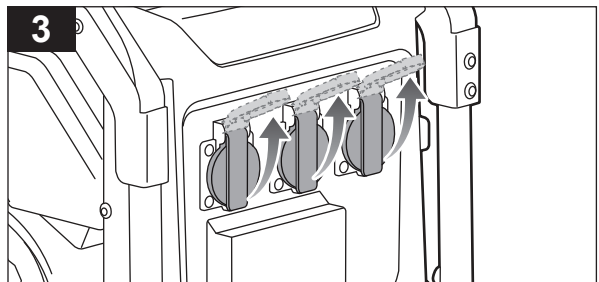
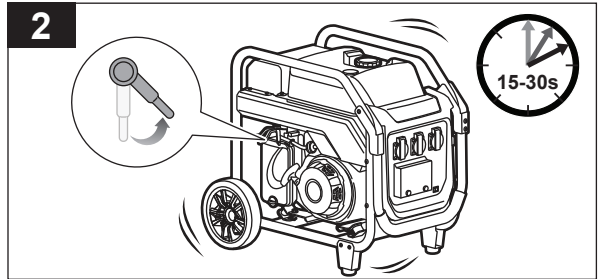
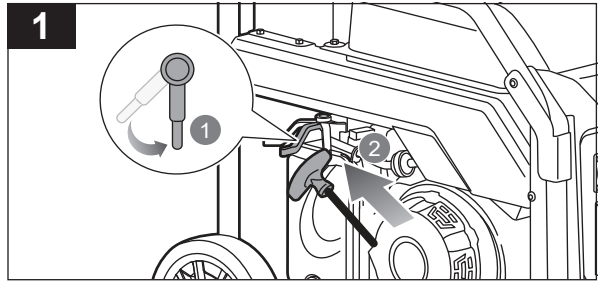


USING THE AC OUTLETS AND OVERLOAD RESET SWITCH

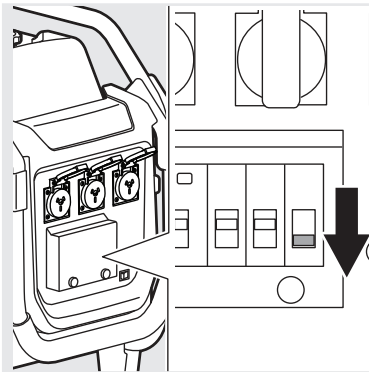
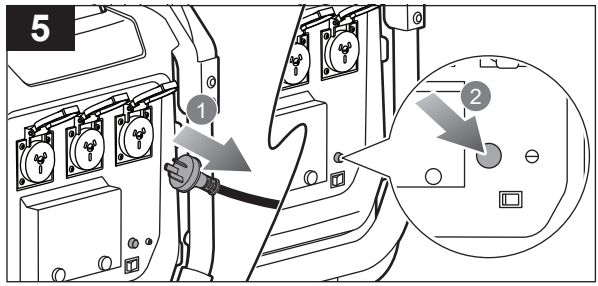
1. Turn the start lever to the START position. Pull the starter grip until the product runs.
NOTE: Do not allow the starter grip to snap back after starting. Return it gently to its original place.
2. Allow the product to run for 15-30 seconds, then turn the lever to the RUN position.
3. Lift the AC outlet covers.
4. Connect the device to be powered to the AC outlet.

WARNING: Never add more loads than the product capacity. Do not use multiple sockets. Connect only one device to each AC outlet.

When the overload LED indicator is on, the product is overloaded and there is no output.



5. Disconnect the device from the AC outlet then press the overload reset button, wait for the product to function normally, and connect the appropriate load.

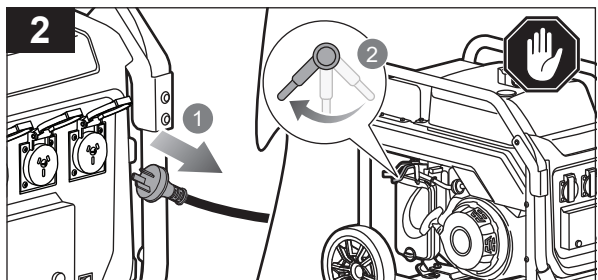
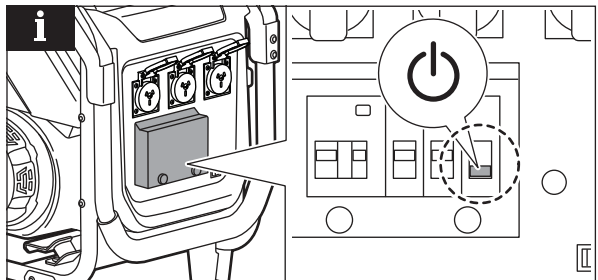
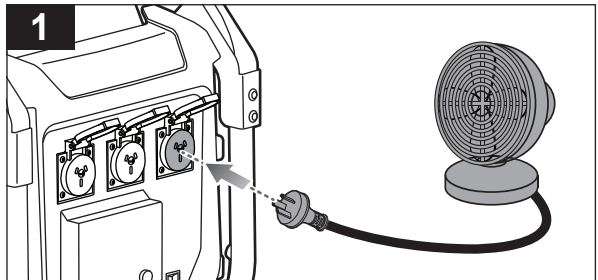


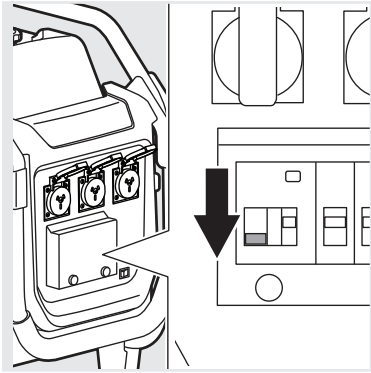
OPERATING THE SINGLE OUTPUT SWITCH

1. Connect the device to be powered to the AC outlet.

NOTE: The single output switches control the output in the corresponding AC outlets above them. If these are in the OFF position, the current is too high.

2. Disconnect the device from the AC outlet, then turn the start lever to the OFF position.



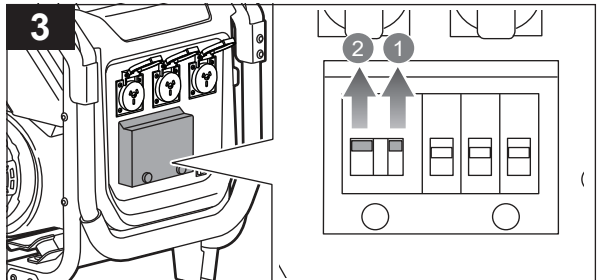
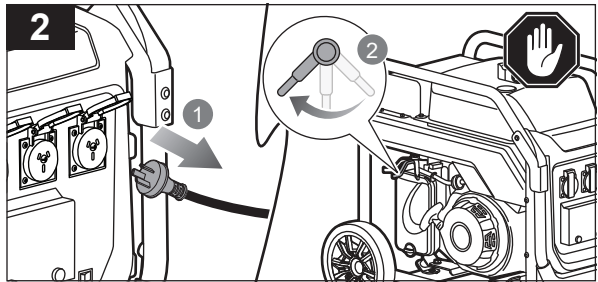
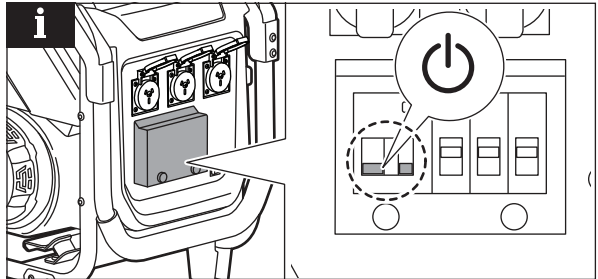
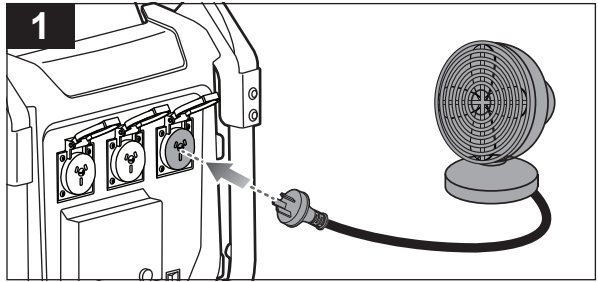


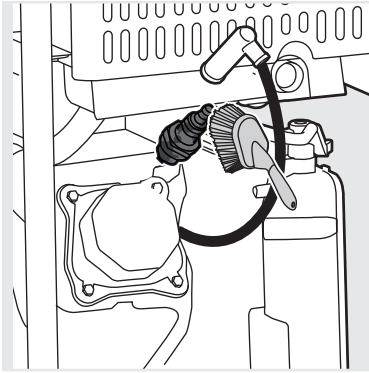
OPERATING THE MAIN OUTPUT SWITCH

1. Connect the device to be powered to the AC outlet.

NOTE: The main output switch controls the output in all the AC outlets. If these are in the OFF position, the current is too high.

2. Disconnect all the devices from the AC outlets, then turn the start lever to the OFF position.
3. Turn each of the 2 switches to the ON position starting from right to left.

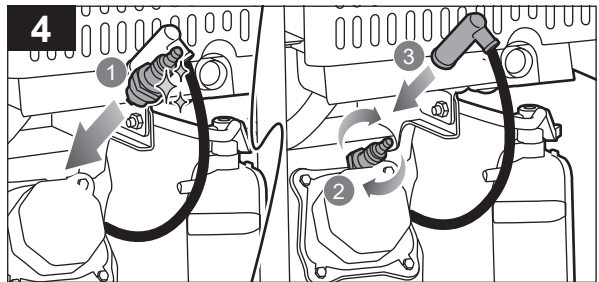
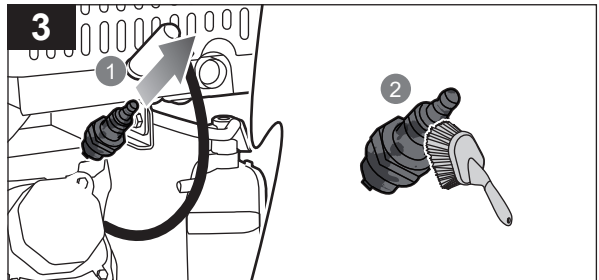
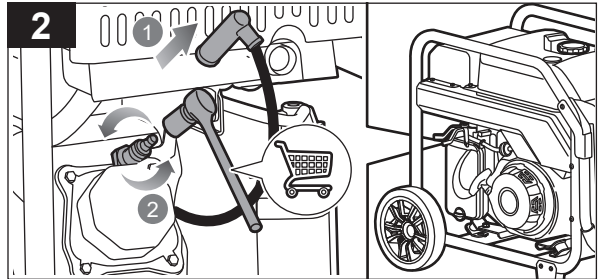
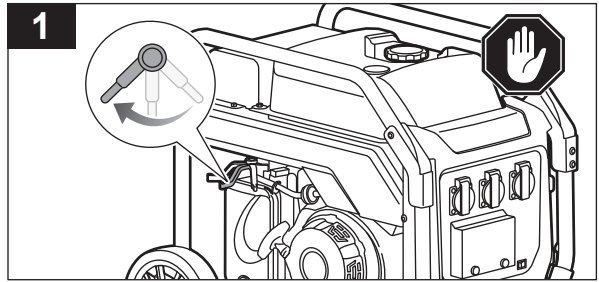


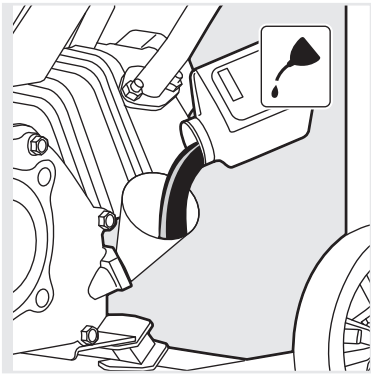


MAINTAINING THE SPARK PLUG

1. Turn the start lever to the OFF position to turn off the product.
2. Remove the spark plug cap. Remove the spark plug using a spark plug wrench or socket.
3. Inspect the spark plug for damage, and clean it with a wire brush before reinstalling.
4. Seat the spark plug in position and thread it in by hand to prevent cross-threading. Use a wrench to tighten the spark plug to 26 Nm torque. Cover the spark plug with the spark plug cap.

NOTE: If the insulator is cracked or chipped, replace the spark plug. The recommended spark plug models are TORCH F7RTC or NGK BPR7ES.



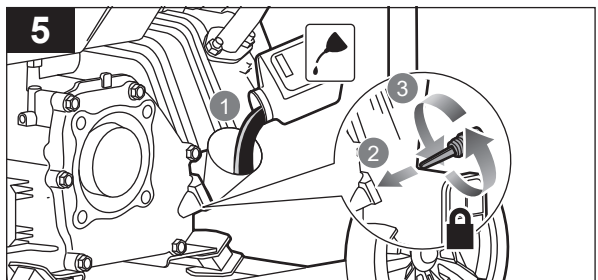
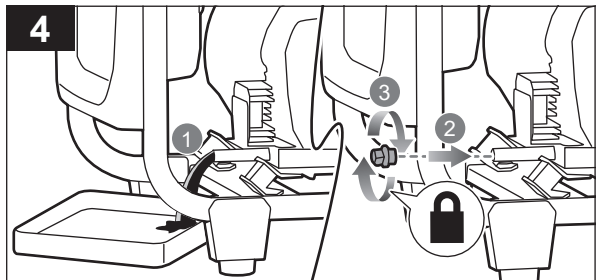
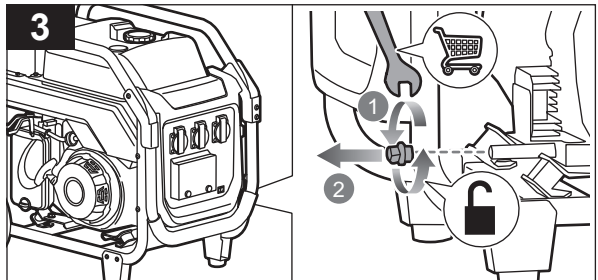
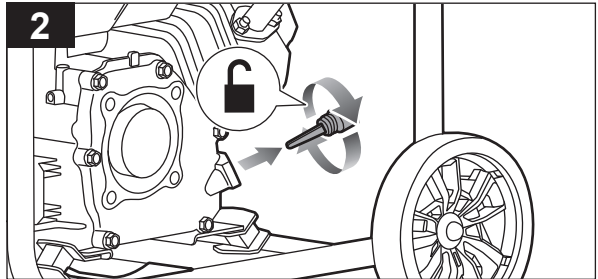
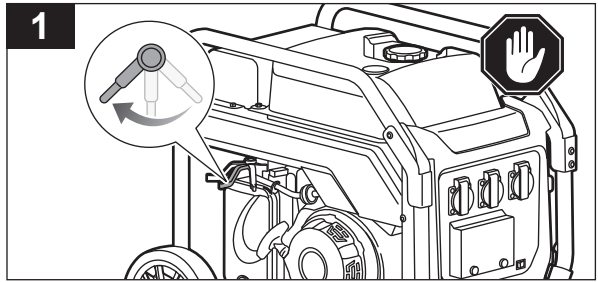


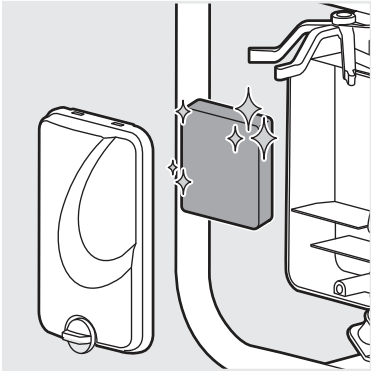
CHANGING ENGINE LUBRICANT

1. Turn the start lever to the OFF position to turn off the product.
2. Remove the oil cap.
3. Remove the oil drain plug.
4. Allow lubricant to drain completely into an approved container.

NOTE: Drain the lubricant while the engine is still warm but not hot. Warm lubricant will drain quickly and more completely. Reinstall the oil drain plug and tighten securely.

5. Refill the oil tank with lubricant as needed. Close and secure the oil tank.

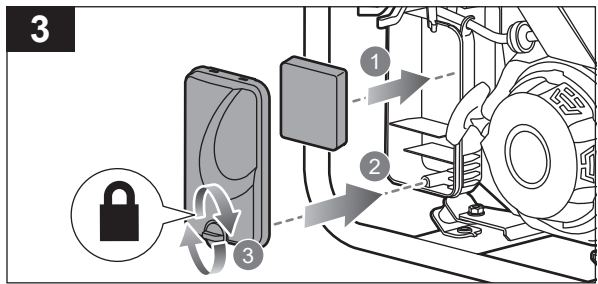
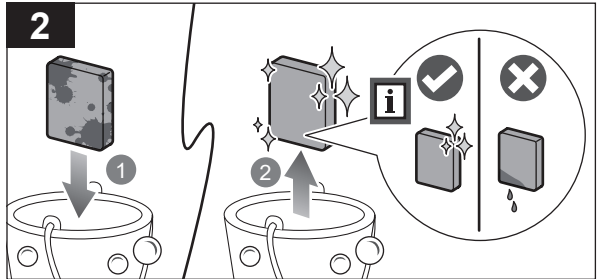
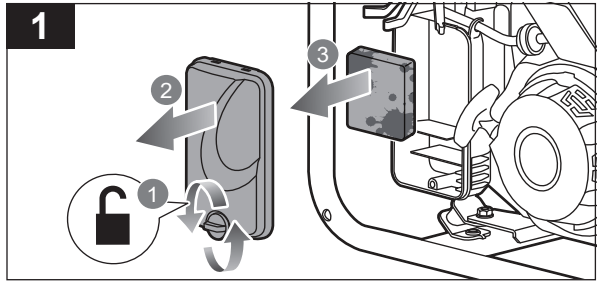


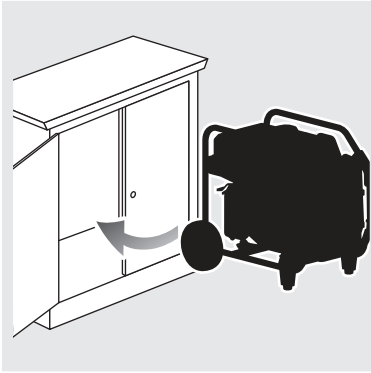


CLEANING THE AIR FILTER

1. Turn the knob counterclockwise to unlock the air filter cover. Remove the cover and set it aside. Remove the filter element.
2. If the filter element is dirty, clean it with warm, soapy water. Rinse and let it dry. Apply a light coat of engine lubricant to the element, then squeeze it out.
3. Reinstall the element in the air filter unit. Reinstall the air filter cover and turn the knob clockwise to secure the cover.

NOTE: Make sure that the filter is seated properly inside the product. Installing the filter incorrectly allows dirt to enter the engine, causing rapid engine wear.



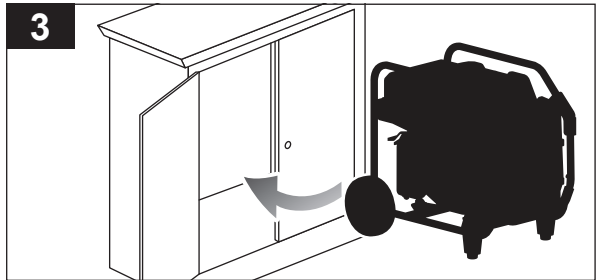
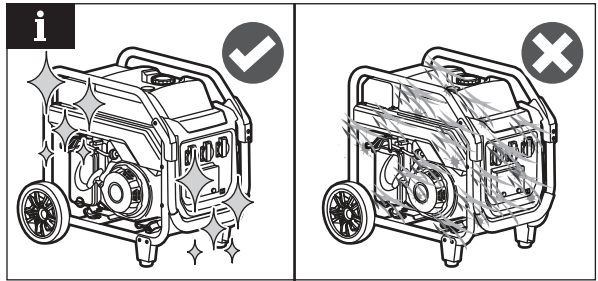
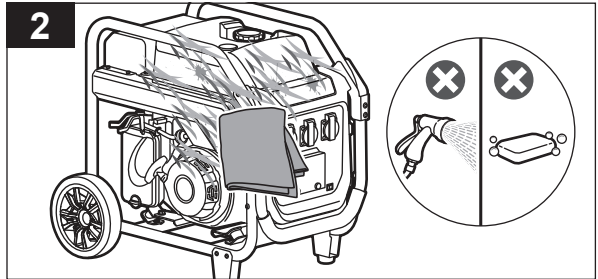
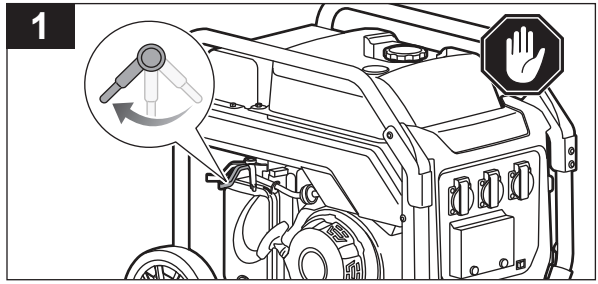


CLEANING AND STORING THE PRODUCT

1. Turn the start lever to the OFF position to turn off the product.
2. Remove all foreign materials from the product. Clean the product with a soft, dry cloth, or cleaning brush. Clean air vents with low pressure air that does not exceed 25 psi.

WARNING: Do not use water to clean the product.

3. Store the product in a cool, dry, and well-ventilated place that is inaccessible to children. Do not store the product outdoors.



MAINTENANCE SCHEDULE

	Before each use	After 1st month or 20 hours of operation	Every 3 months or 50 hours of operation	Every 6 months or 100 hours of operation	Every 12 months or after 300 hours of operation
Check the engine lubricant	■				
Change the engine lubricant		■		■	
Check the air filter	■				
Clean the air filter			■		
Change the air filter					■
Check/adjust the spark plug				■	
Replace the spark plug					■
Check/clean the spark screen				■	
Check/adjust the valve clearance*					■
Clean the fuel tank and filter*				■	
Check the fuel hose	■				■
Inspect the fuel filter	■				
Replace the fuel filter					■
Check all hose connections	■				■
Recharge battery (if equipped)				■	
Inspect fuel tank vapor vent (if equipped)	■				■

* These items should only be carried out by an authorised service center.

NOTE: Maintenance should be performed more frequently when the product is used in dusty areas.

When the engine has exceeded the maximum figures specified in the table, maintenance should still be cycled according to the intervals of time or hours stated herein.

ELECTRICAL

Never add more loads than the product capacity. Make sure that the product can supply enough continuous (running) and surge (starting) watts for the items that will be powered at the same time. Do not use multiple sockets. Connect only one device to each AC outlet.

Application/Equipment	Estimated running watts*	Estimated starting watts*
Emergency / Home standby		
Lights (qty. 4 x 75 W)	300	0
Refrigerator	600	780
46 in. flat panel television	190	0
Satellite receiver	250	0
Portable fan	40	120
Heater	1300	1300
Laptop	250	0
Slow cooker	270	0
Radio	200	0
Job site		
Electric drill – 3/8 in.	440	600
Quartz halogen work light	1000	0
Reciprocating saw	960	960
Circular saw – 7-1/4 in.	1400	2300
Miter saw – 10 in.	1800	1800
Air compressor – 1/4 HP	970	1600
Airless sprayer – 1/3 HP	600	1200

*Wattages listed are approximate. Check the tool or appliance for actual wattage.

TROUBLESHOOTING

If these solutions do not solve the problem, contact an authorised service centre.

Problem	Possible cause	Solution
The engine does not start.	The engine switch is off.	Turn engine switch on.
	The fuel valve is OFF.	Turn fuel valve to ON position.
	There is no fuel.	Fill the fuel tank.
	The gasoline is stale or there is water in the gasoline.	Drain the entire fuel and refill with fresh fuel.
	The lubricant level is low.	The product is equipped with a low oil shutdown feature. If the engine lubricant level is low, the engine lubricant must be refilled before the product will start. Check the engine lubricant level and fill, if necessary.
	The spark plug is faulty, fouled, or improperly gapped.	Replace the spark plug.
	The engine was stored without treating or draining fuel, or refueled with bad fuel.	Drain the fuel and carburetor. Refuel with fresh fuel.
The engine is hard to start.	The fuel filter is dirty.	Contact an authorised service centre.
	There is water in the fuel.	Drain the entire fuel and refill with fresh fuel.
The engine lacks power.	The spark plug has a weak spark.	Contact an authorised service centre.
	The engine was stored without treating or draining fuel, or refueled with bad fuel.	Drain the fuel and carburetor. Refuel with fresh fuel.
The AC receptacle does not work.	The air filter is dirty.	Clean or replace the air filter as needed.
	The device plugged in is defective.	Try a different device.
	The generator is overloaded.	Remove loads and press the reset button.
The generator makes a "spark knock" or "pinging" noise.	The circuit breaker is tripped.	Reset the AC circuit breaker.
	An occasional light "knocking" or "pinging" under heavy load is not a cause for concern. However, if the knocking or pinging occurs under normal load at a steady engine speed, the problem may be with the brand of fuel being used.	Switch to a different brand of fuel, making sure that the octane rating is 86 or higher. If problem continues, contact an authorised service centre.

PRODUCT SPECIFICATIONS

Generator	
Model	RPGENINV4K
Engine type	212cc OHV
Rated voltage	240 V
Rated amps	12.9 A
Rated output	3100 W
Rated frequency	50 Hz
Fuel tank capacity	12 L (+/-50 mL)
Fuel type: Unleaded fuel (91 or higher)	
Oil tank capacity	0.6 L (+/-50 mL)
Oil type:	
SAE 10W-30 API-SJ or higher weight oil	
Noise emission level (in accordance with EN ISO 3744:2010)	
A-Weighted sound pressure level at operator's position	$L_{pA} = 75.26 \text{ dB(A)}$
Uncertainty of measurement	$K = 0.75 \text{ dB}$
A-Weighted sound power level	$L_{wA} = 95.26 \text{ dB(A)}$
Uncertainty of measurement	$K = 0.75 \text{ dB}$
$L_{wA} + K_{wA}$	96 dB(A)

REPLACEMENT PARTS

Spark plug TORCH F7RTC or NGK BPR7ES

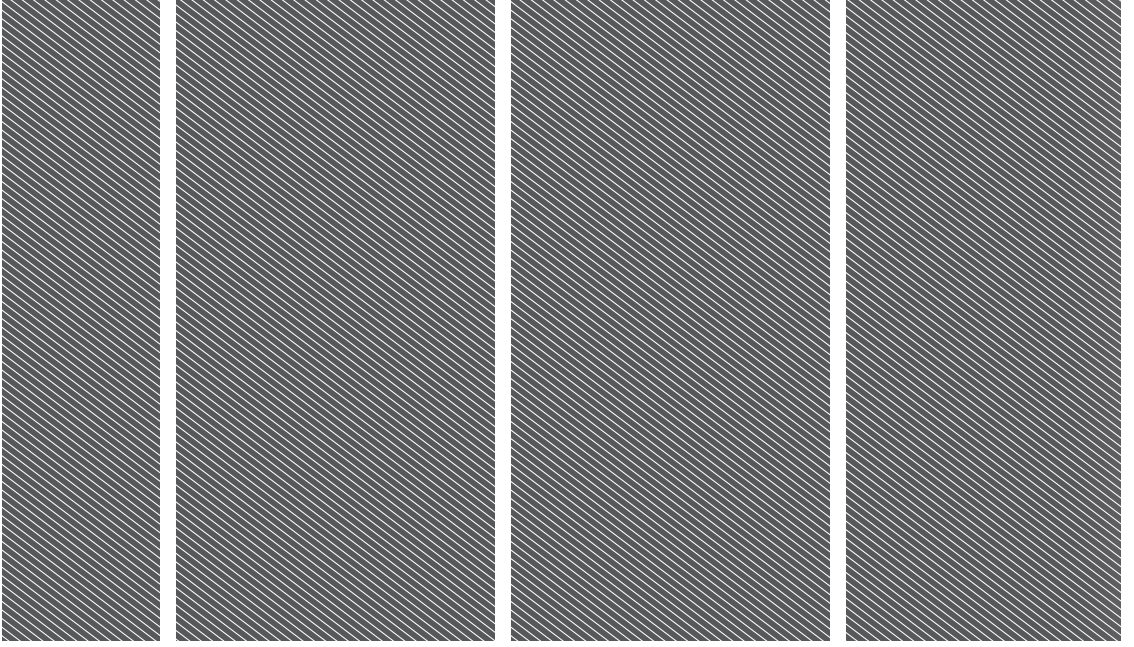
NOTE: Visit your local special orders desk or contact RYOBI customer service for replacement parts.

⚠ WARNING! The declared vibration total values and the declared noise emission values given in this instruction manual have been measured in accordance with a standardised test and may be used to compare one tool with another. They may be used for a preliminary assessment of exposure.

The declared vibration and noise emission values represent the main applications of the tool. However, if the tool is used for different applications, used with different accessories, or poorly maintained, the vibration and noise emission may differ. These conditions may significantly increase the exposure levels over the total working period. An estimation of the level of exposure to vibration and noise should take into account the times when the tool is turned off or when it is running idle. These conditions may significantly reduce the exposure level over the total working period.

Identify additional safety measures to protect the operator from the effects of vibration and noise, such as maintaining the tool and the accessories, keeping the hands warm (in case of vibration), and organising work patterns.





Imported by:
Techtronic Industries Australia Pty Ltd
31 Gilby Road, Mount Waverley, VIC 3149
Melbourne, Australia

Techtronic Industries N.Z. Limited
Unit C, 70 Business Parade South,
Highbrook, Auckland 2013, New Zealand

RYOBI is a trade mark of Ryobi Limited, and is used under license.
TORCH is a registered trade mark of ZhuZhou Torch Spark Plug Company Limited.
NGK is a registered mark of NGK Spark Plug Co Limited.

099979185001-01

