

AEG

A18HPI

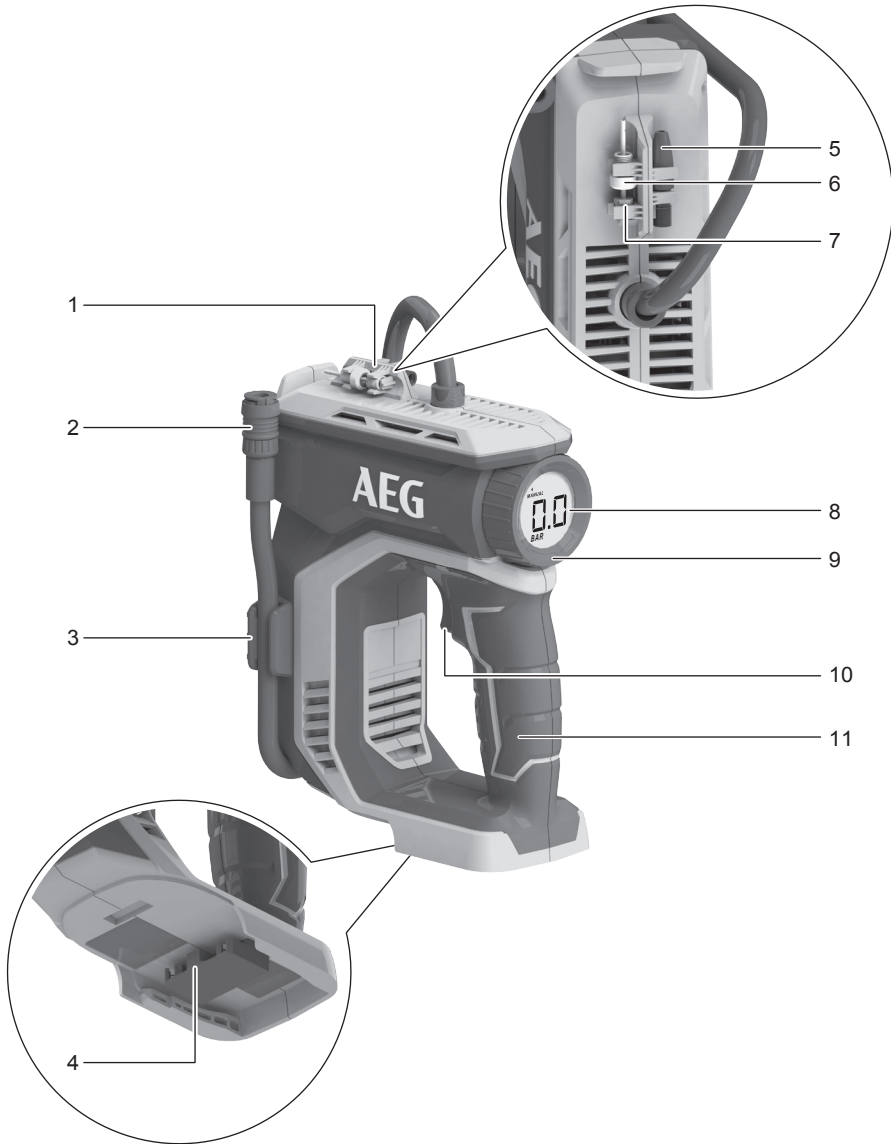
Original instructions

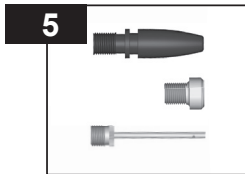
Important!

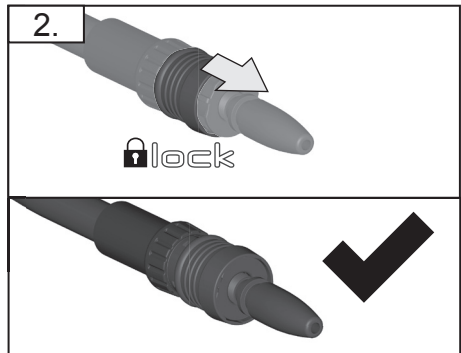
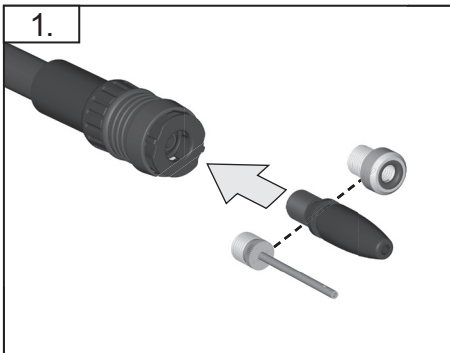
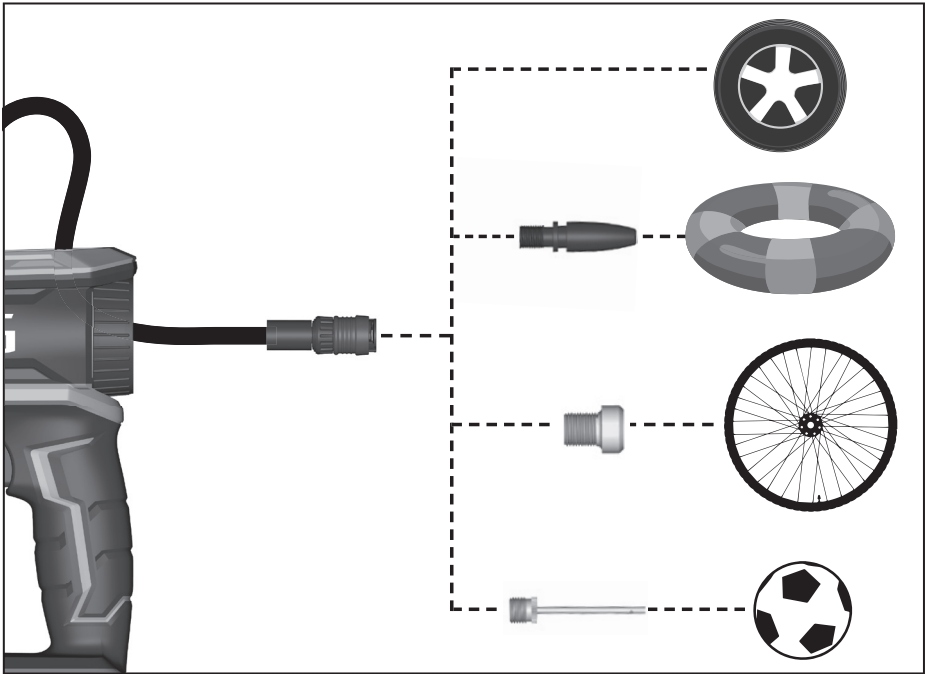
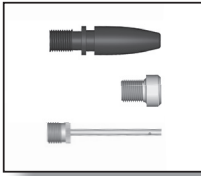
It is essential that you read the instructions in this manual before assembling, operating and maintaining the product.

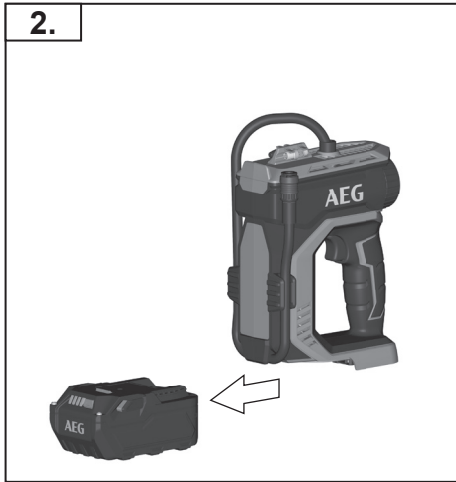
Subject to technical modifications.

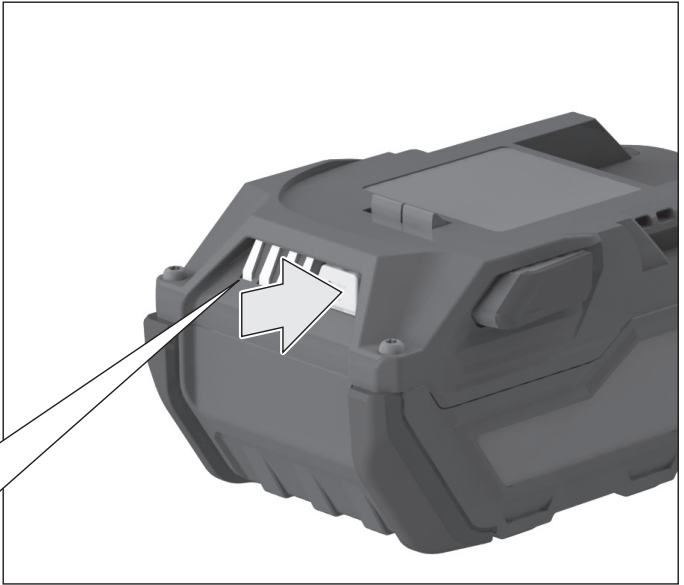
1. Nozzle holder
2. High pressure hose
3. Hose holder
4. Battery port
5. Tapered raft nozzle
6. Presta valve adapter
7. Sports ball needle
8. Digital display
9. Control dial
10. Trigger
11. Handle









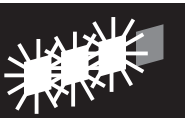







78-100 %





55-77 %



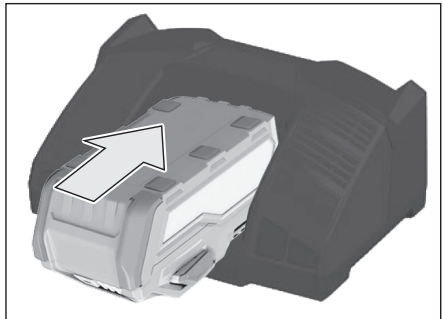

33-54 %

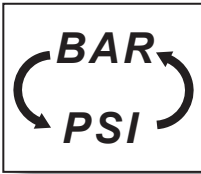


10-32 %

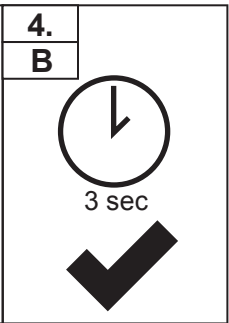
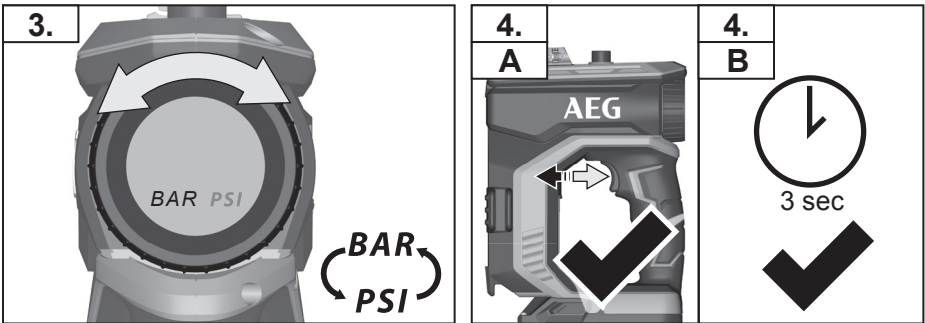
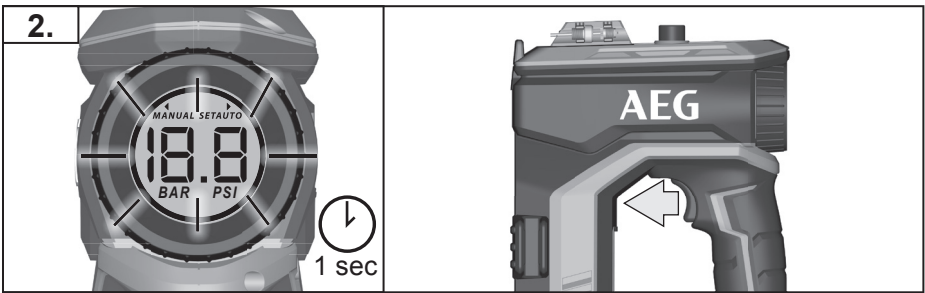
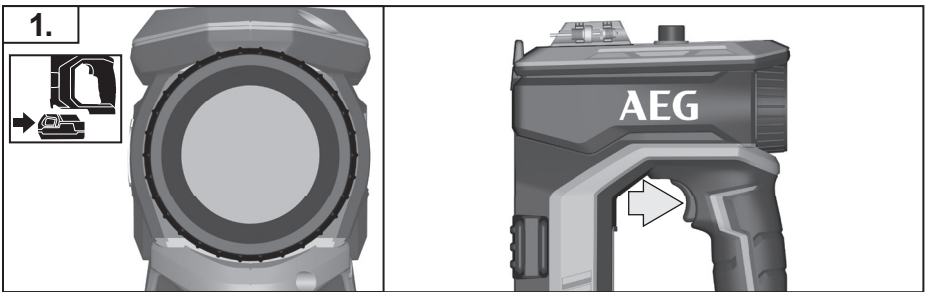


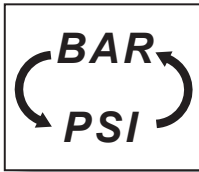
<10 %



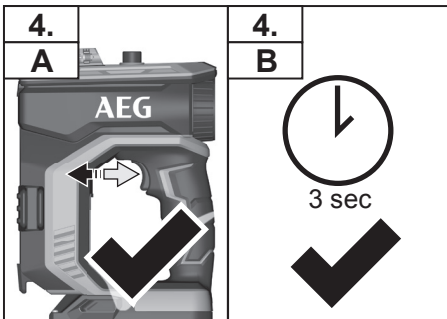
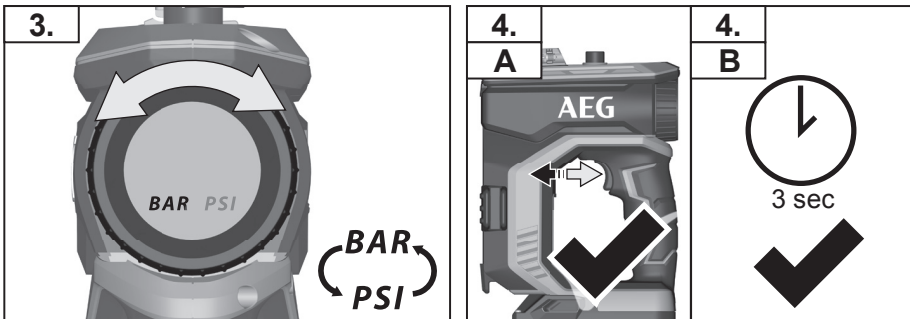
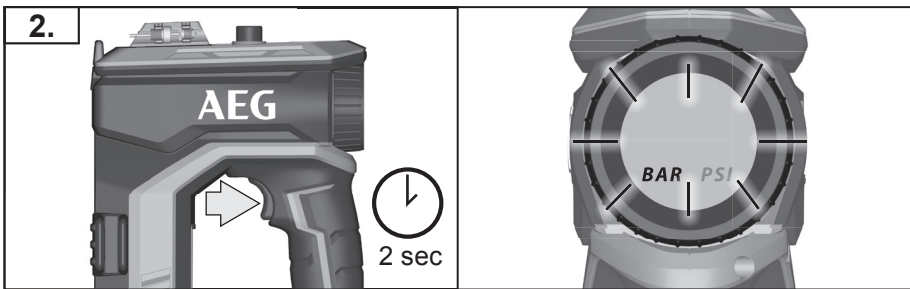
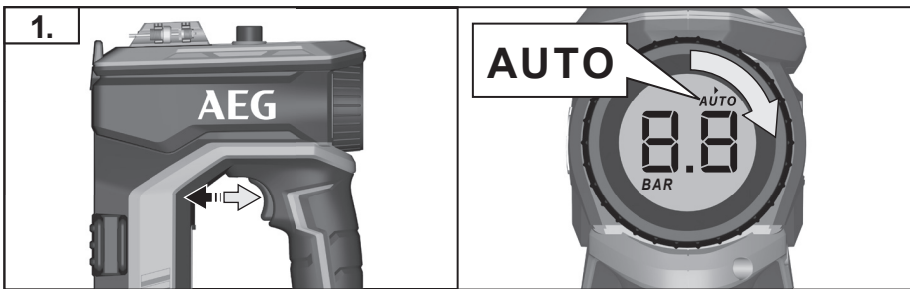


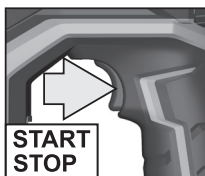
A





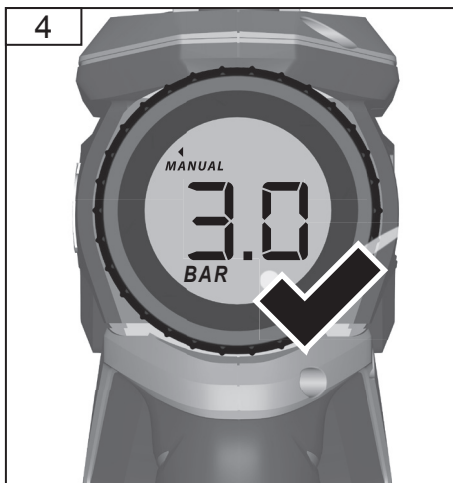
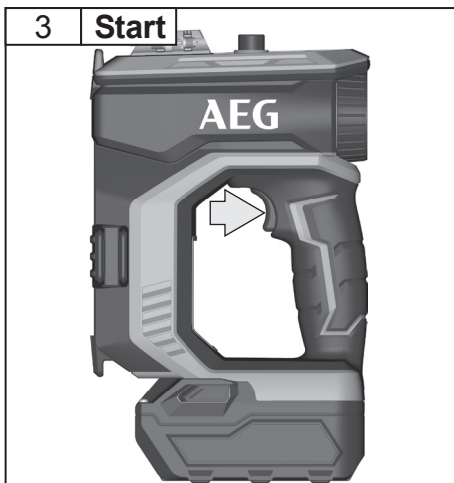
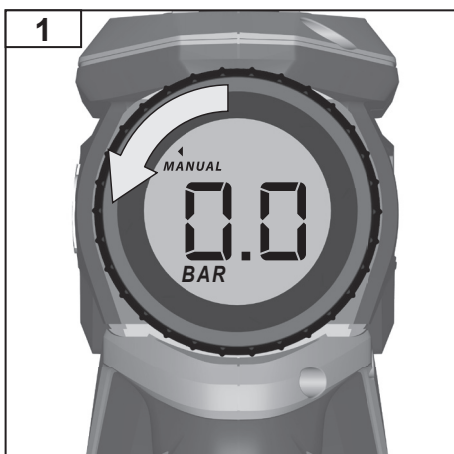
B

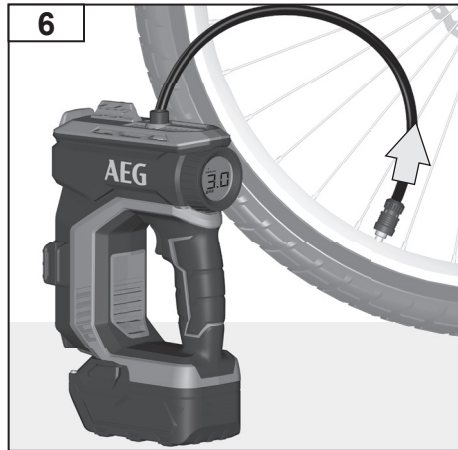
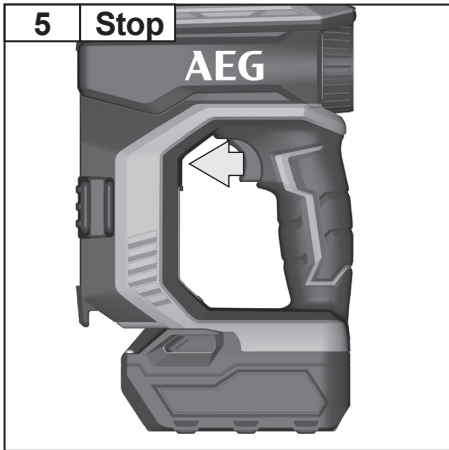
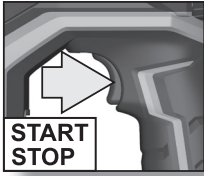




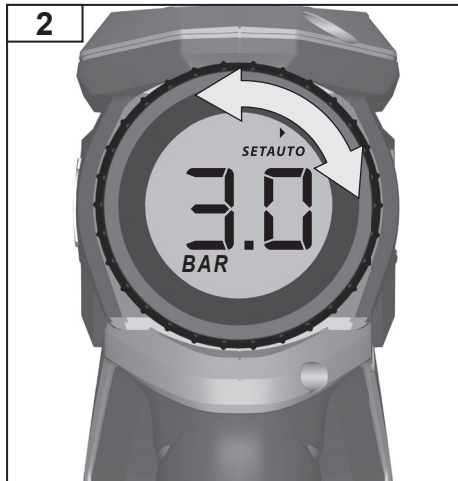
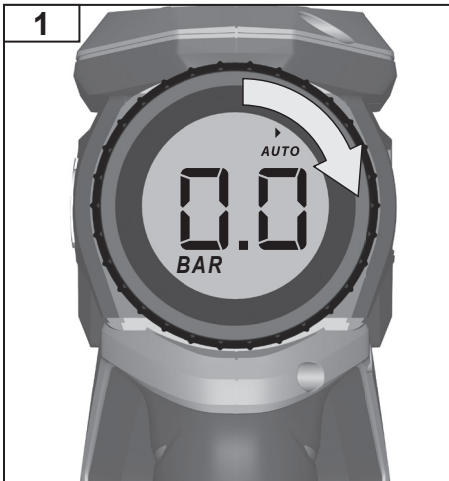
Risk of Bursting.

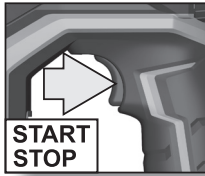
Manual



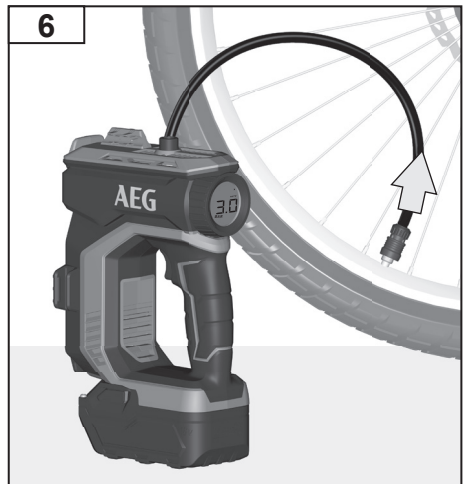
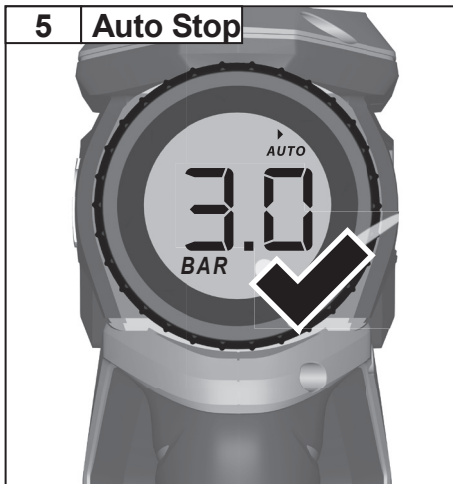
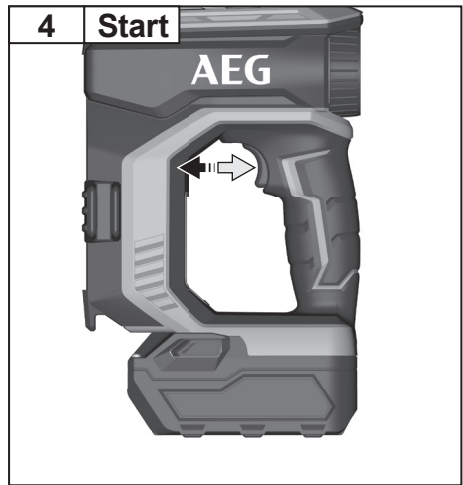
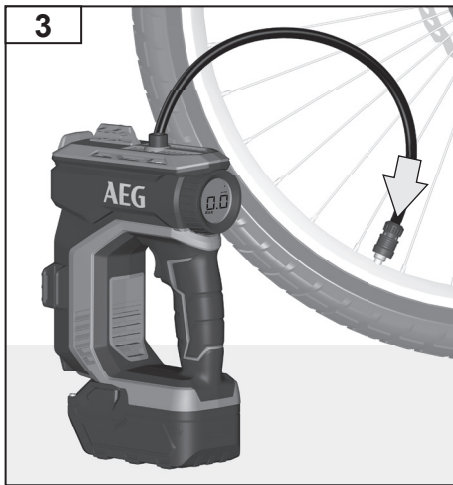


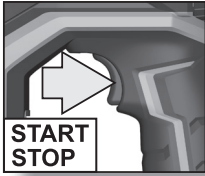
Auto



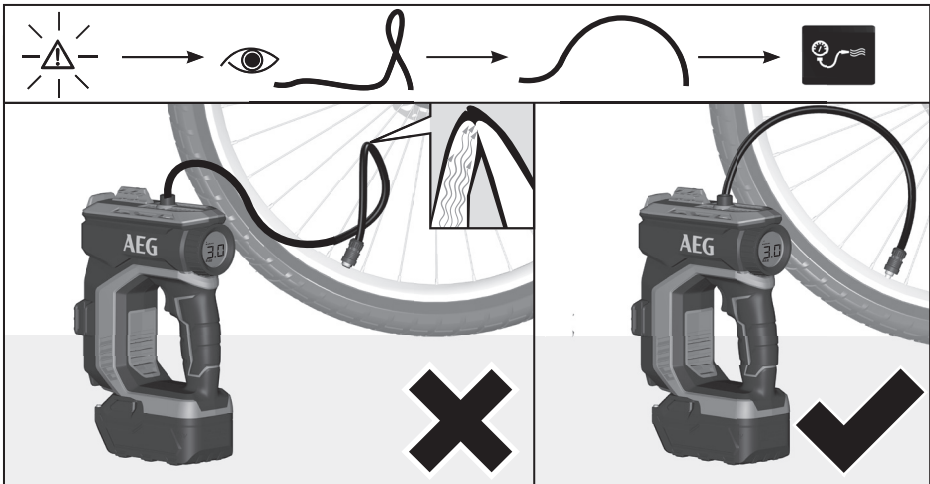
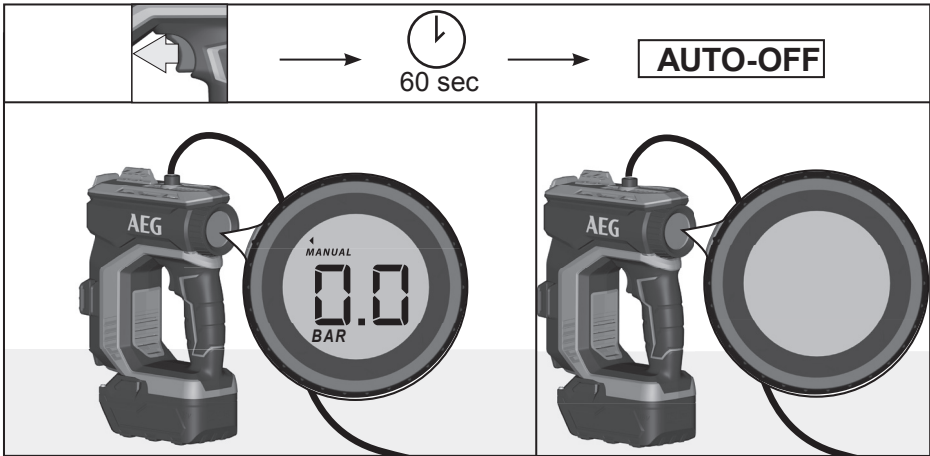


Risk of Bursting.



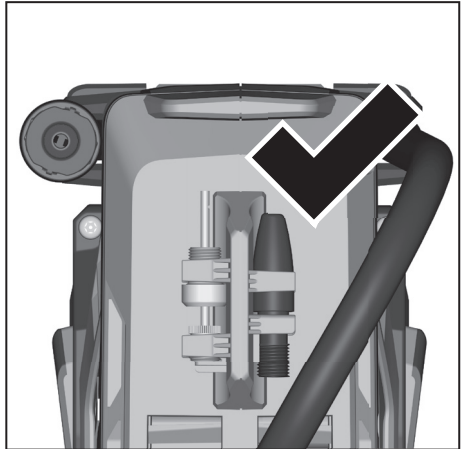
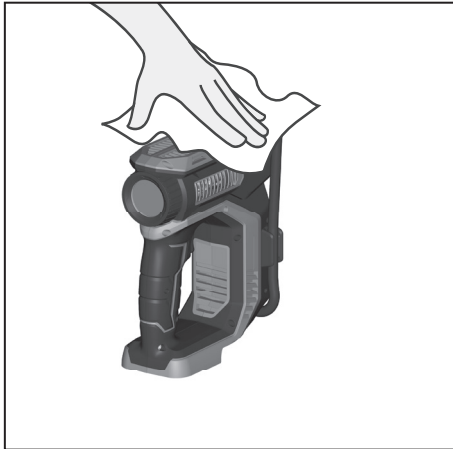


Risk of Bursting.





Remove the battery pack before starting any work on the product.



**TECHNICAL DATA****HIGH PRESSURE INFLATOR****A18HPI**

Rated voltage	18 V
High pressure flow rate	
@ 90psi	14 L/min
@ 35psi	23 L/min
Maximum pressure	150 PSI, 10.3 BAR
Pressure hose length	51 cm
Weight - not including battery pack	1.05 kg
Measured values determined according to EN 62841.	
A-weighted sound pressure level	$L_{PA} = 89.0$ dB(A)
Uncertainty K	3 dB(A)
A-weighted sound power level	$L_{WA} = 100.0$ dB(A)
Uncertainty K	3 dB(A)
Wear ear protectors.	
The vibration total values (triaxial vector sum) determined according to EN 62841:	
Vibration emission value	$A_h = 4.0$ m/s ²
Uncertainty K	1.5 m/s ²

 WARNING

The vibration emission level given in this information sheet has been measured in accordance with a standardised test given in EN 62841 and may be used to compare one tool with another. It may be used for a preliminary assessment of exposure. The declared vibration emission level represents the main applications of the tool. However if the tool is used for different applications, with different accessories or poorly maintained, the vibration emission may differ. This may significantly increase the exposure level over the total working period.

An estimation of the level of exposure to vibration should also take into account the times when the tool is switched off or when it is running but not actually doing the job. This may significantly reduce the exposure level over the total working period.

Identify additional safety measures to protect the operator from the effects of vibration such as: maintain the tool and the accessories, keep the hands warm, organisation of work patterns.

BATTERY AND CHARGER

Compatible battery pack (not included)	Compatible charger (not included)
L1820R	
L1820S	
L1825R	AL18G
L1830R-X5	BL1218
L1840R	BLK1218
L1850R	BL18DPS
L1860R-X5	BL18S
L1890R	

Use AEG 18V battery and charger only

 WARNING!

Read all safety warnings, instructions, illustrations and specifications provided with this power tool. Failure to follow all instructions listed below may result in electric shock, fire and/or serious injury.

Save all warnings and instructions for future reference.

INFLATOR SAFETY WARNINGS

Risk of bursting. Do not preset the product resulting in its output pressure to be greater than the marked maximum pressure of the item to be inflated. Do not use at pressure greater than 150 PSI (10.3 bars).

Make sure the hose is free of obstructions or snags. Entangled or snarled hoses can cause loss of balance or footing and may be

damaged.

Never leave the product unattended with the hose still connected and operating.

Never leave the product unattended with the nozzle attached to the item being inflated.

To reduce the risk of electrical shock, do not put the product in water or other liquid. Do not place or store an appliance where it can fall or be pulled into a tub or sink.

Do not continue to use the product or nozzle which leaks air or does not function properly.

Do not attempt to pull or carry the product by the hose.

Store indoors.

Always disconnect the air and power supply before making adjustments and servicing, or when not in use.

Inspect yearly for cracks, pin holes or other imperfections which could cause the product to become unsafe. Never cut or drill holes in the product.

Know your inflator. Read operator's manual carefully. Learn its applications and limitations, as well as the specific potential hazards related to this tool. Following this rule will reduce the risk of electric shock, fire, or serious injury.

To reduce the risk of electric shock, do not expose the product to rain. Store indoors.

Never cut or drill holes in the product.

Use the product only for its intended use. Do not alter or modify the





product from the original design or function.

Do not attempt to modify this product or create accessories or attachments not recommended for use with the product. Any such alteration or modification is misuse and could result in a hazardous condition leading to possible serious personal injury.

Always be aware that misuse and improper handling of the product can cause injury to yourself and others.

Household use only.

Do not use the product as a breathing device.

Never direct a jet of compressed air toward people or animals. Take care not to blow dust and dirt towards yourself or others. Following this rule will reduce the risk of serious injury.

Protect your lungs. Wear a face or dust mask if the operation is dusty. Following this rule will reduce the risk of serious personal injury.

Do not use the product to spray chemicals. Your lungs can be damaged by inhaling toxic fumes.

Risk of bursting. Carefully monitor objects during inflation to reduce the risk of over inflation. Use a reliable pressure gauge periodically during inflation.

To reduce the risk of over inflation, use a reliable pressure gauge periodically during inflation. The pressure gauge on the inflator is for reference only and is therefore not binding for exact values.

Allow the product to cool for ten (10) minutes after every ten (10) minutes of continuous use. Never block the inflating or deflating outlets while operating.

Remove the battery pack before starting any work on the product.

Do not dispose of used battery packs in the household refuse or by burning them. AEG Distributors offer to retrieve old batteries to protect our environment.

Do not store the battery pack together with metal objects (short circuit risk).

Use only System AEG chargers for charging System AEG battery packs. Do not use battery packs from other systems.

Battery acid may leak from damaged batteries under extreme load or extreme temperatures. In case of contact with battery acid wash it off immediately with soap and water. In case of eye contact rinse thoroughly for at least 10 minutes and immediately seek medical attention.

Ambient temperature range for tool during operation is between 0°C and 40°C.

Ambient temperature range for tool storage is between 0°C and 40°C.

The recommended ambient temperature range for the charging system during charging is between 10°C and 38°C.

SPECIFIED CONDITIONS OF USE

The inflator may be used for the following applications.

- Inflating high pressure items like motorbike/car/bicycle tyres and sport equipment.
- Inflating low pressure items like air mattresses, pool inflatables and rafts.

Do not use the product for any other purpose.

BATTERIES

Battery packs which have not been used for some time should be recharged before use.

Temperatures in excess of 50°C (122°F) reduce the performance of

the battery pack. Avoid extended exposure to heat or sunshine (risk of overheating).

The contacts of chargers and battery packs must be kept clean.

For an optimum life-time, the battery packs have to be fully charged, after used.

To obtain the longest possible battery life remove the battery pack from the charger once it is fully charged.

For battery pack storage longer than 30 days:

- Store the battery pack where the temperature is below 27°C and away from moisture.
- Store the battery packs in a 30% - 50% charged condition.
- Every six months of storage, charge the pack as normal.

ADDITIONAL BATTERY SAFETY WARNINGS

⚠ WARNING! To reduce the risk of fire, personal injury, and product damage due to a short circuit, never immerse your tool, battery pack or charger in fluid or allow a fluid to flow inside them. Corrosive or conductive fluids, such as seawater, certain industrial chemicals, and bleach or bleach containing products, etc., can cause a short circuit.

Ambient temperature range for battery during use is between 0°C and 40°C.

Ambient temperature range for battery storage is between 0°C and 27°C.

TRANSPORTING LITHIUM BATTERIES

Lithium-ion batteries are subject to the Dangerous Goods Legislation requirements.

Transportation of those batteries has to be done in accordance with local, national and international provisions and regulations.

- The user can transport the batteries by road without further requirements.
- Commercial transport of lithium-ion batteries by third parties is subject to Dangerous Goods regulations. Transport preparation and transport are exclusively to be carried out by appropriately trained persons and the process has to be accompanied by corresponding experts.

When transporting batteries:

- Ensure that battery contact terminals are protected and insulated to prevent short circuit.
- Ensure that battery pack is secured against movement within packaging.
- Do not transport batteries that are cracked or leak.

Check with forwarding company for further advice.

BATTERY PACK PROTECTION

The battery pack has overload protection that protects it from being overloaded and helps to ensure long life. Under extreme stress the battery electronics switch off the product automatically. To restart, switch the product off and then on again. If the product does not start up again, the battery pack may have discharged completely. In this case it must be recharged in the battery charger.

THERMAL OVERLOAD PROTECTION

Overheated cells will reduce performance, run time and life. Overheating can occur from battery packs being exposed to very hot environments or from the tool they are powering being over-worked.



The control electronics will automatically shut down the battery pack to protect the cells which in turn protects the electronics and motor within the tool. The battery pack will automatically shut itself down again should the temperature condition remain high when the trigger is pulled again. The system will continue to shut the battery pack down until the temperature is returned to a safe operating level.

CURRENT OVERLOAD PROTECTION

The control electronics will instantly shut down the battery back when excessive current draw is detected - protecting both the battery cells and the motor of the tool. Releasing the trigger will reset the battery pack each time.

INDIVIDUAL CELL MONITORING

The control electronics constantly check each individual cell and automatically adjust its charge and discharge requirements accordingly.

This system maximises individual cell life whilst ensuring that the battery pack is delivering peak performance to the tool at all times.

MAINTENANCE

The ventilation slots of the product must be kept clear at all times. Use only AEG accessories and AEG spare parts. Should components need to be replaced which have not been described, please contact one of our AEG service agents (see our list of guarantee/service addresses).

If needed, an exploded view of the tool can be ordered. Please state the Article No. as well as the product type printed on the label and order the drawing at your local service agents or directly at:

Techtronic Industries Australia Pty Ltd

PO Box 1065
Mount Waverley VIC 3149
Tel. no. 1300 234 797
Australia

Techtronic Industries N.Z. Limited

PO Box 12-806
Penrose AUCKLAND 1642
Tel. no. 0800 234 797(0800 AEGPWR)
New Zealand

SYMBOLS



Safety alert



Volts



Direct current



Indoor use only



Regulatory Compliance Mark (RCM). Product meets applicable regulatory requirements.



Please read the instructions carefully before starting the product.



Wear ear protectors.



Always wear goggles when using the machine.



Risk of injury. Explosive material.



For indoor use only





Do not dispose of electric tools together with household waste material. Electric tools and electronic equipment that have reached the end of their life must be collected separately and returned to an environmentally compatible recycling facility.







AEG



www.aegpowertools.com.au
www.aegpowertools.co.nz

Techtronic Industries Australia Pty Ltd
31 Gilby Road, Mount Waverley, VIC 3149
Australia

Techtronic Industries N.Z. Limited
Unit C, 70 Business Parade South,
Highbrook, Auckland 2013, New Zealand

*AEG is a registered trade mark used under
license from AB Electrolux (publ).
© 2021 Techtronic Cordless GP.*

