

# LUGNA

FORM & FUNCTION



## ASSEMBLY INSTRUCTIONS

### External Drawer

HEIGHT  
253mm

### Scallop Drawer

HEIGHT  
253mm

### Inner Drawer

HEIGHT  
175mm

*LUGNA understands the importance of timeless style and practical durability for a home's form and function. Our European-inspired collection is simple and easy to use, with five modern colours that complement any style and space. LUGNA's modular system allows for endless configurations and additions, with various-sized cabinets, drawers, shelving, and hinged doors that can be combined to create a bespoke look on any budget. Whether you're looking for something modern and sleek or classic and elegant, LUGNA has something for everyone.*

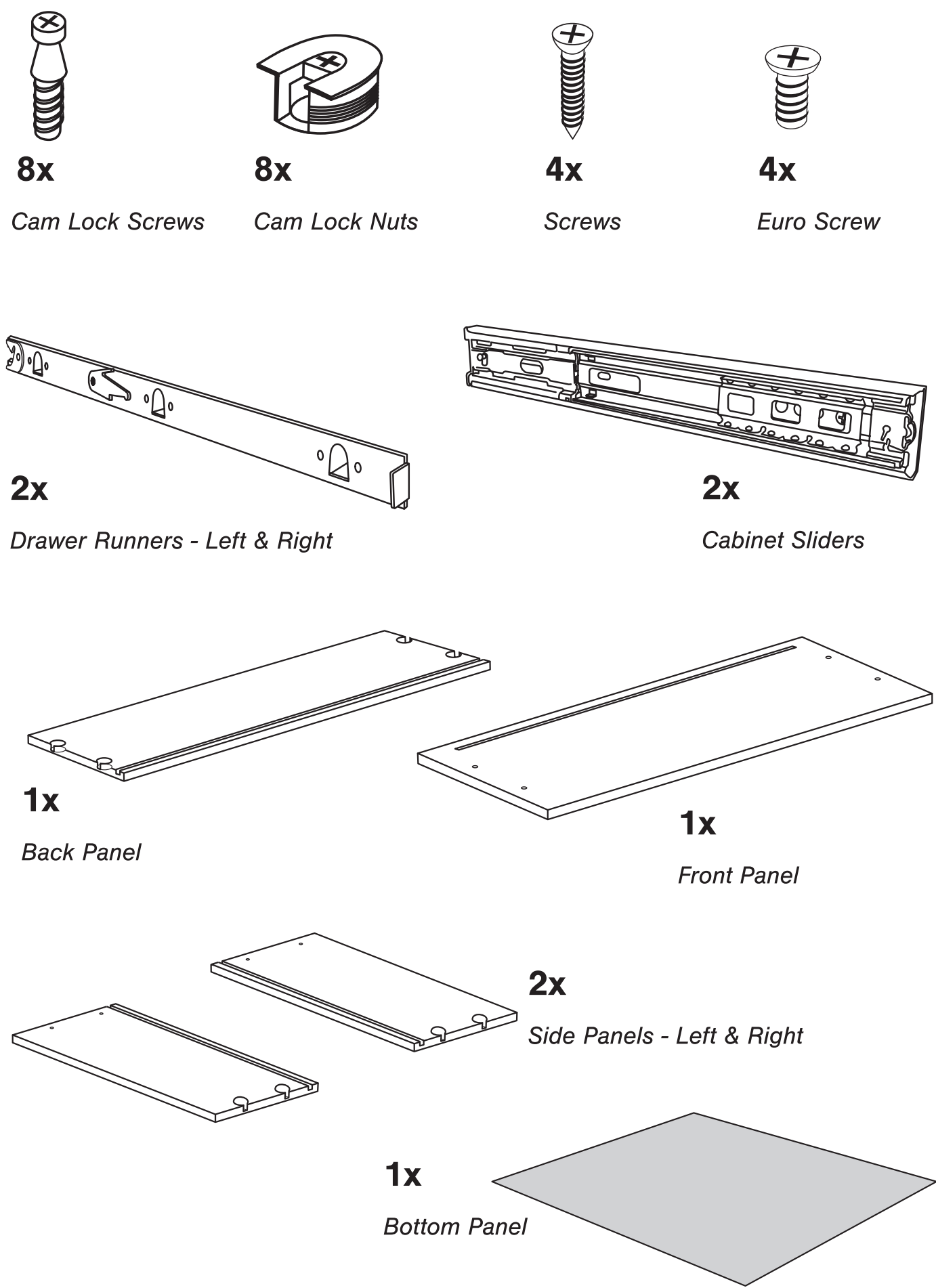


SCAN for  
more info

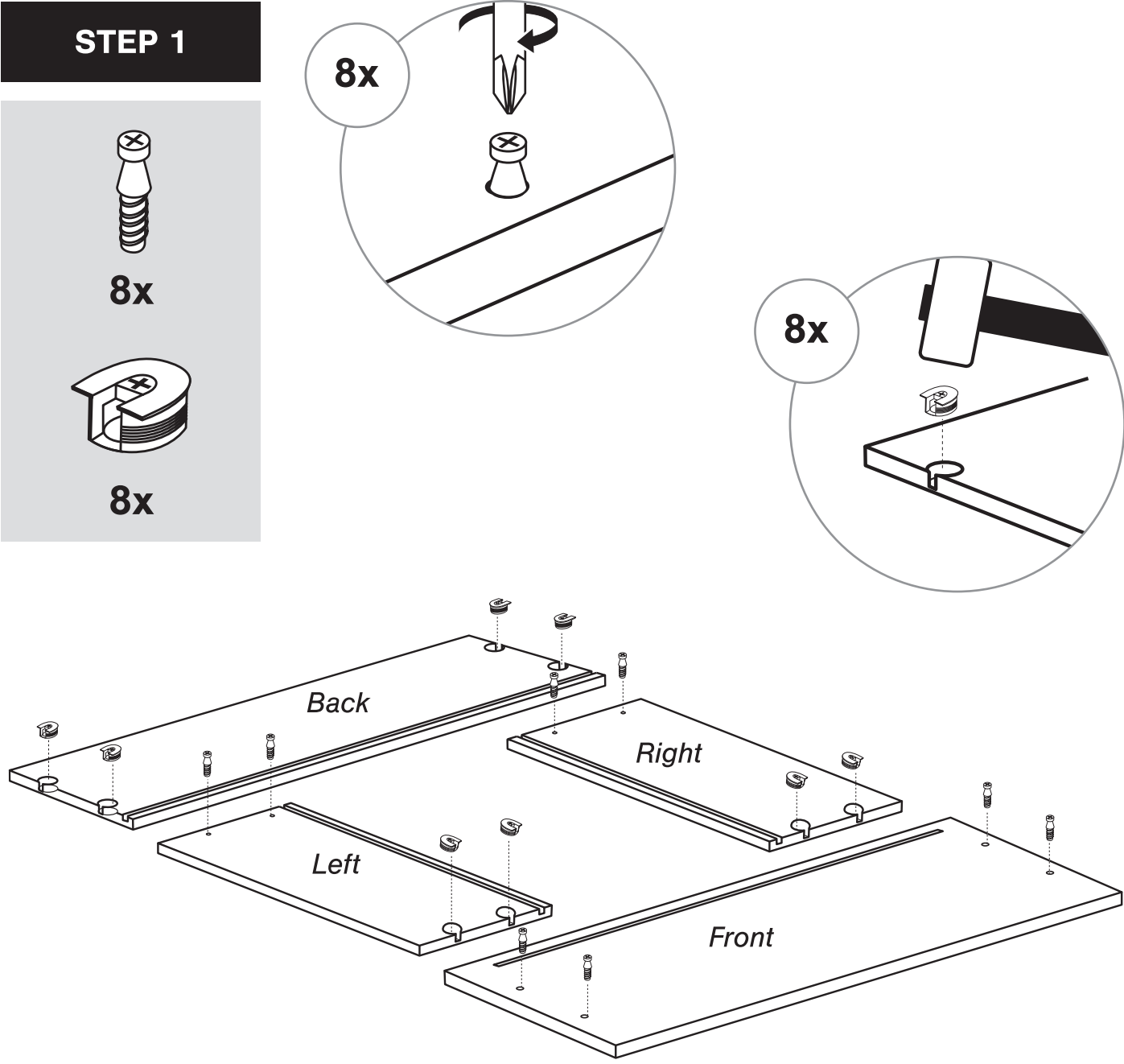
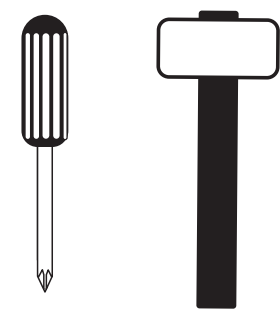
**10 YEAR**  
WARRANTY



**Includes**

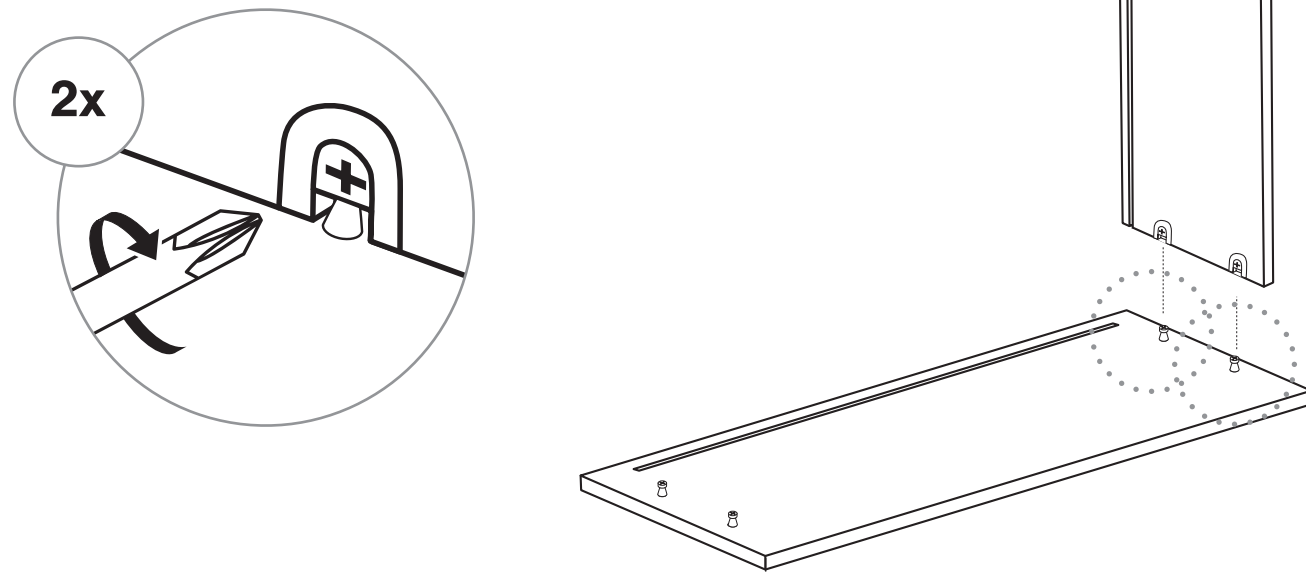


**What you will need**



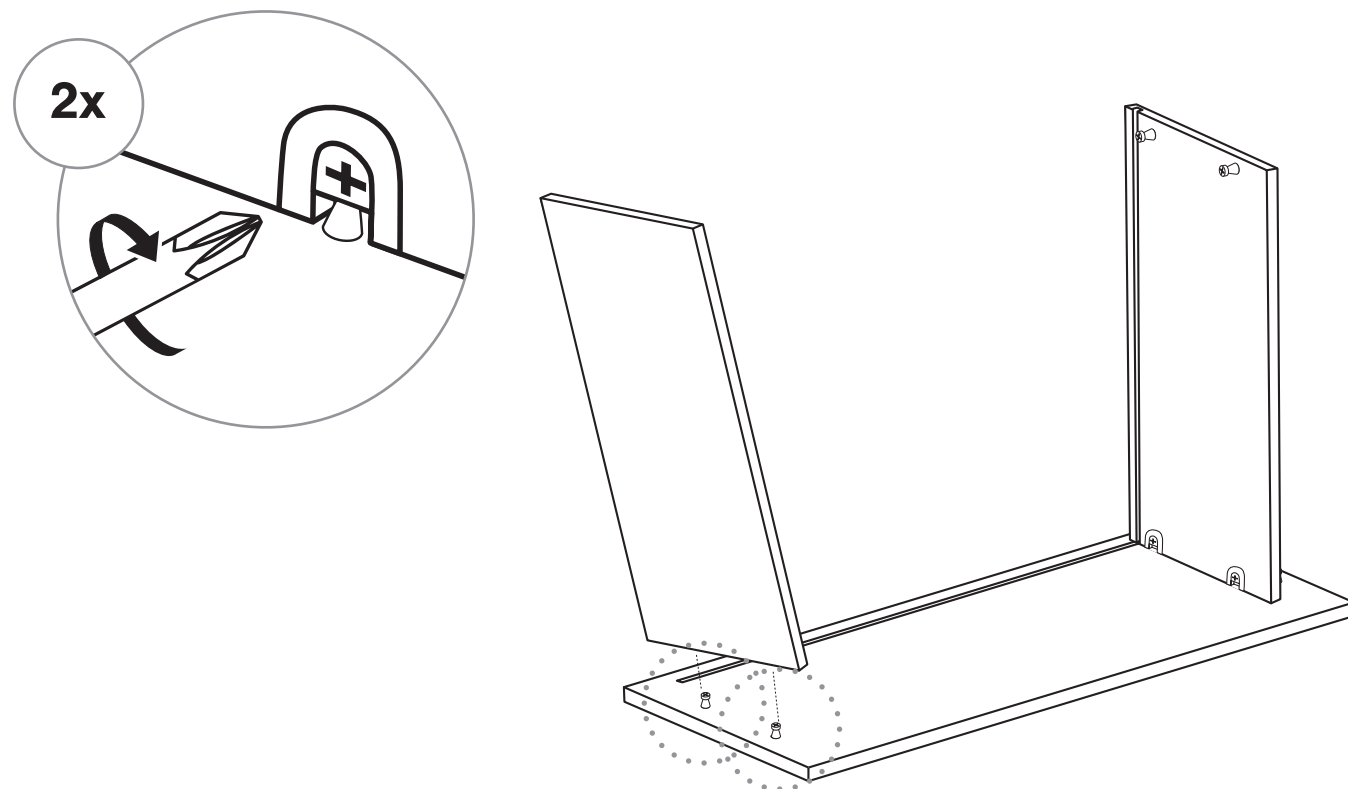
## STEP 2

**1x** Right Side Panel



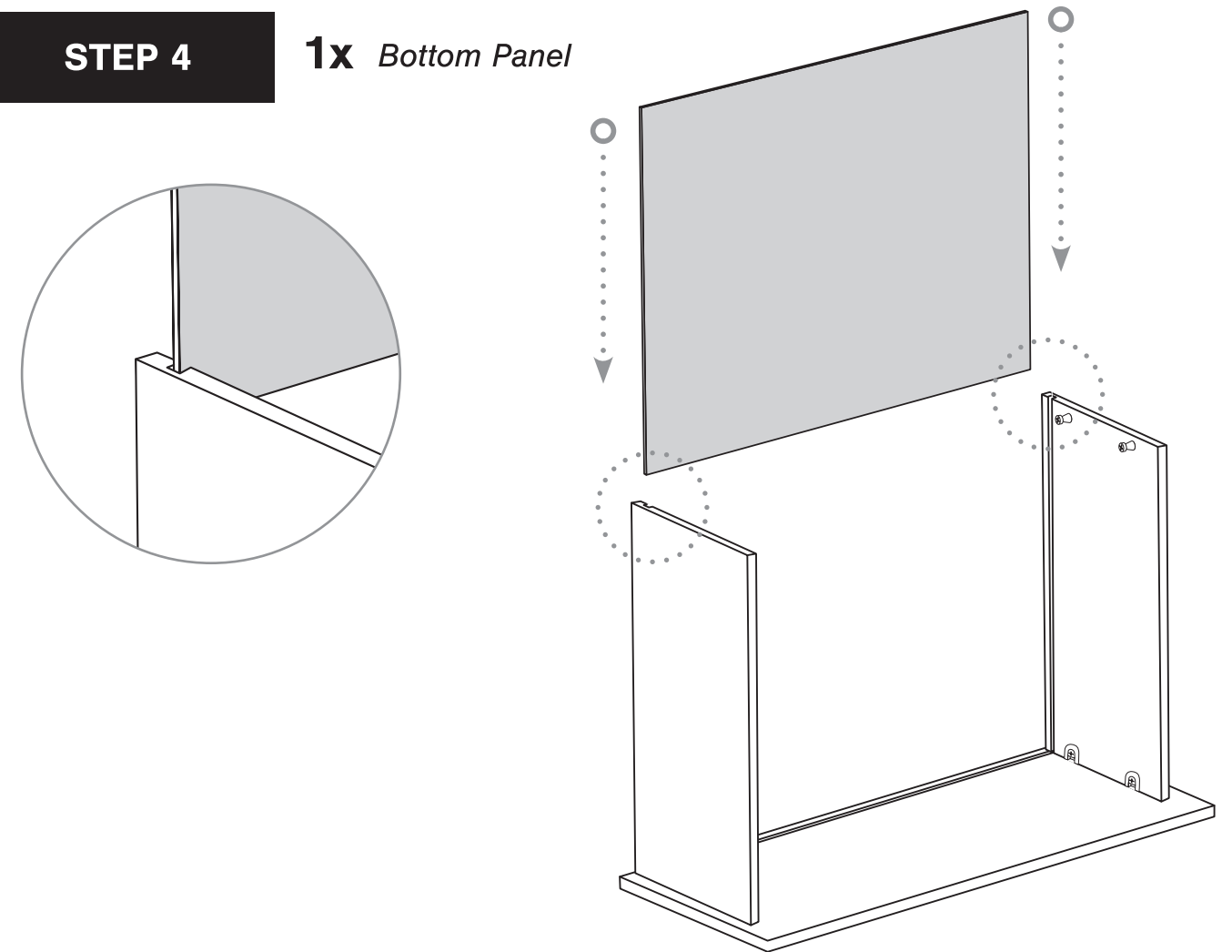
## STEP 3

**1x** Left Side Panel



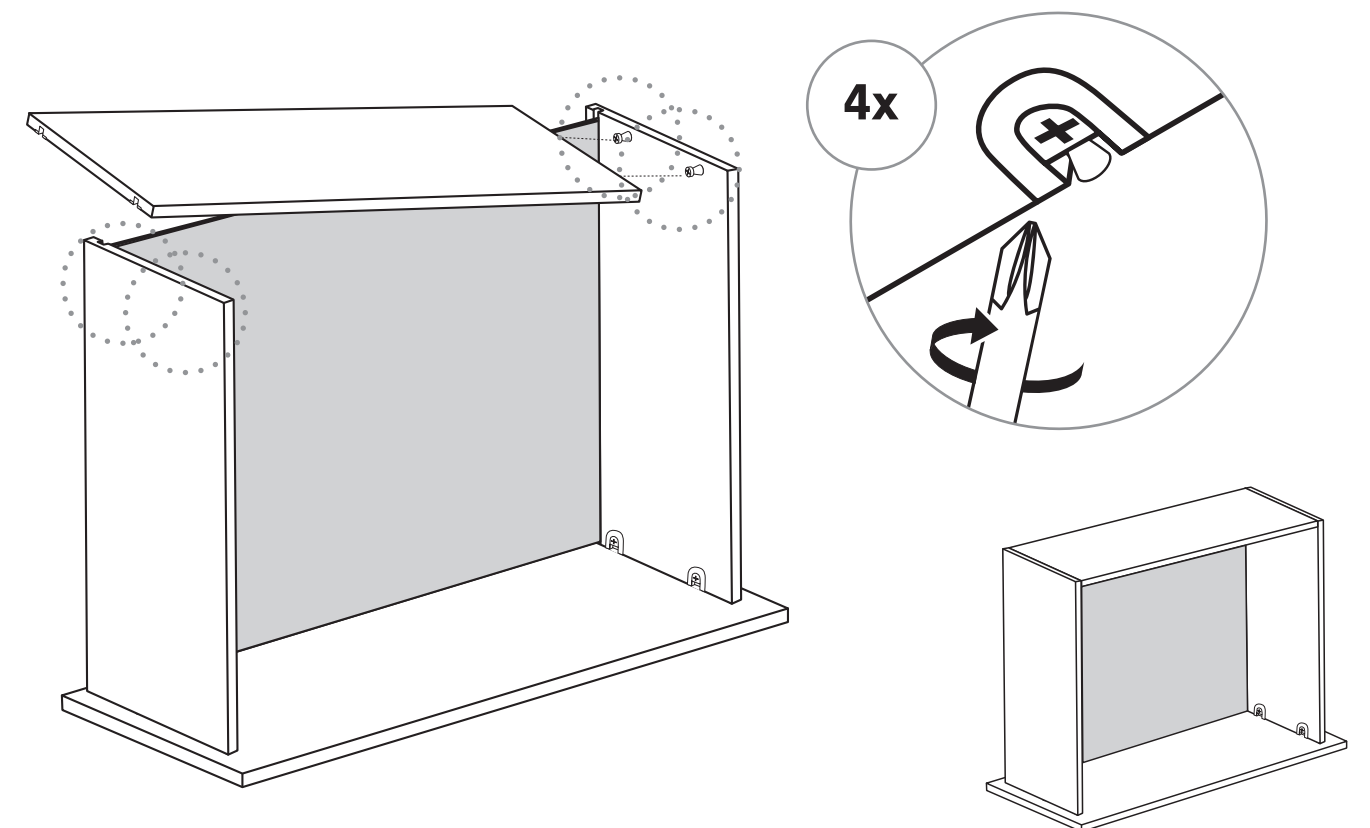
## STEP 4

**1x** Bottom Panel



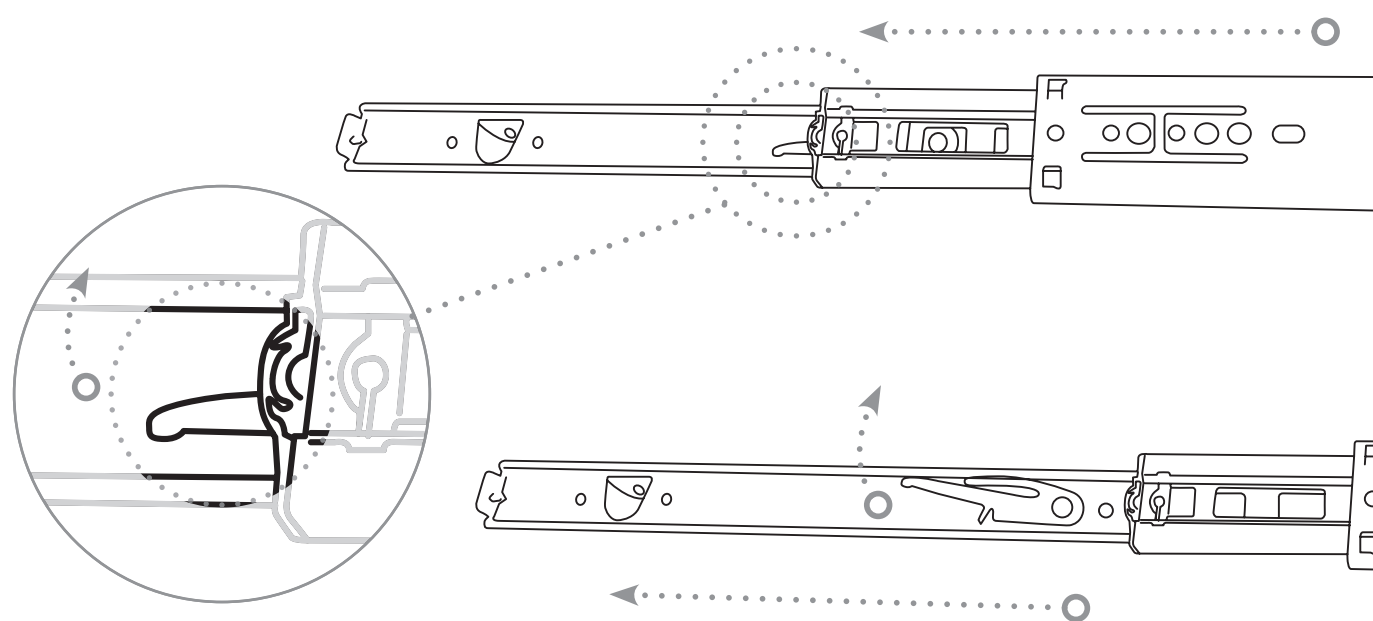
## STEP 5

**1x** Back Panel

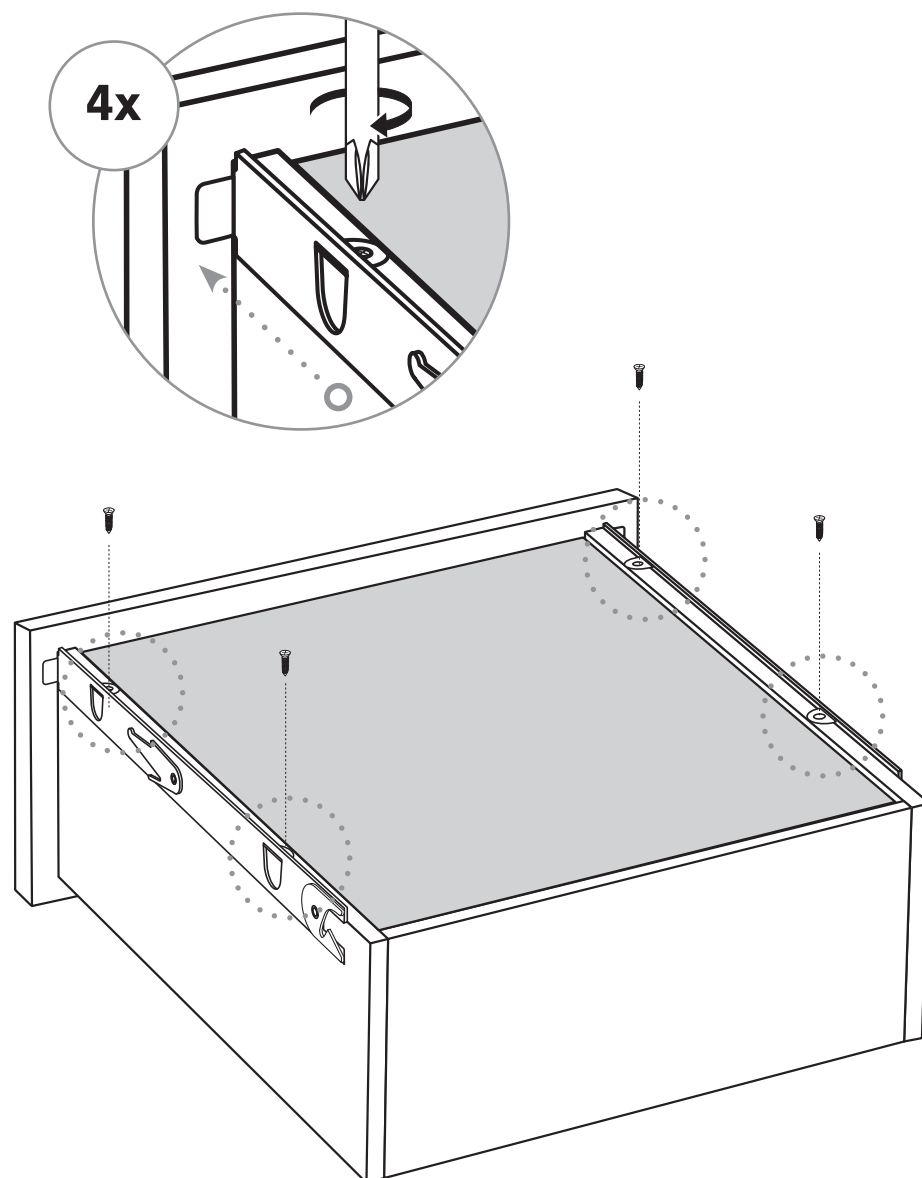
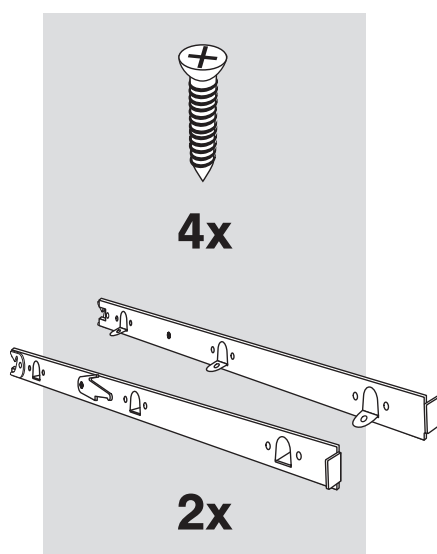


## STEP 6

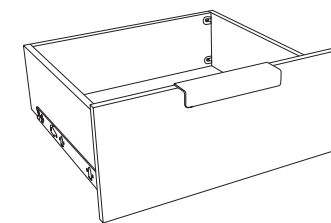
**2x** Remove the drawer runner from the cabinet slider.



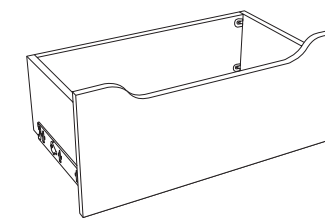
## STEP 7



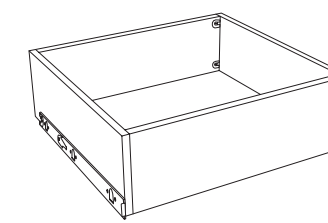
## Drawer Runner Positions



**External Drawer**



**Scalloped Drawer**



**Inner Drawer**

Suitable for use behind doors using a 165-degree hinge.

## STEP 1

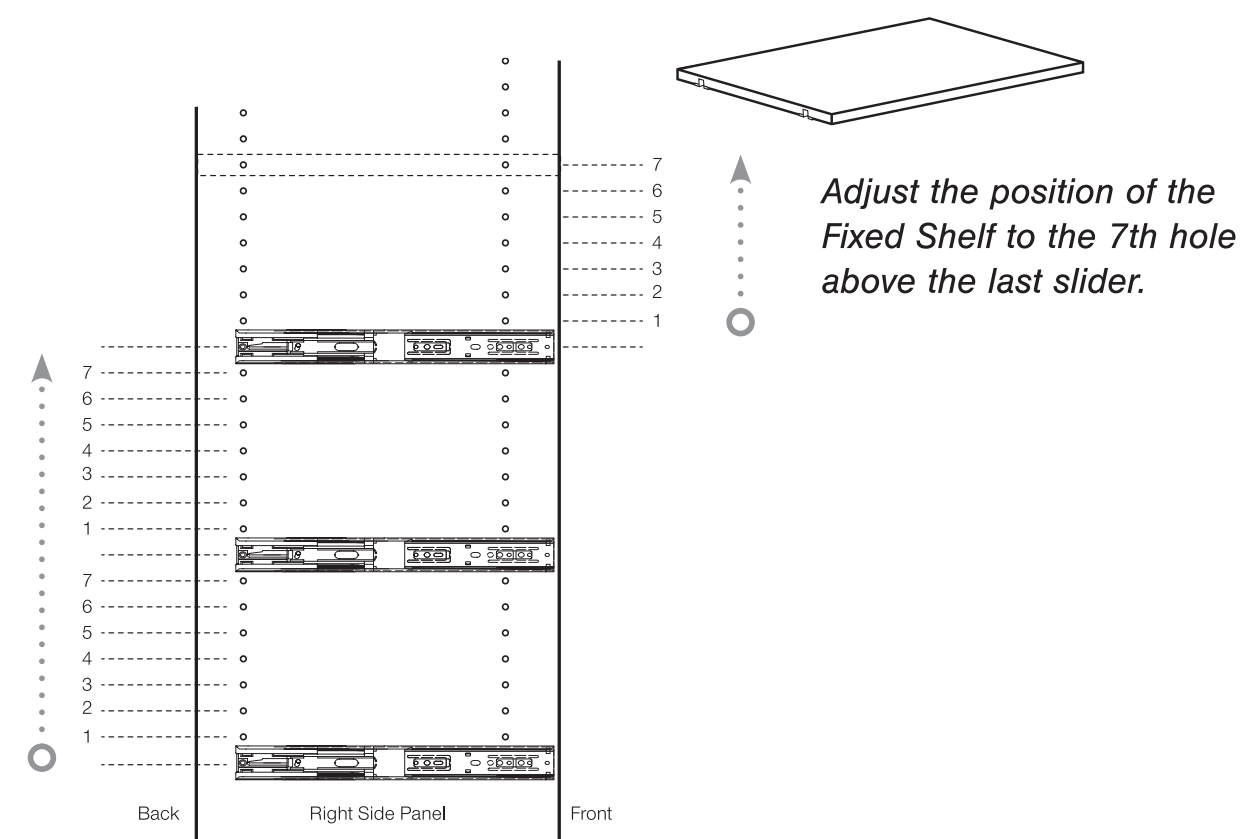
### Inner Drawers and Doors

When installing cabinet doors, the position of your inner drawer runners will be affected by the door hinge locations. Refer to the door assembly guide and install your doors. Optionally, disengage the hinges from the hinge plates.

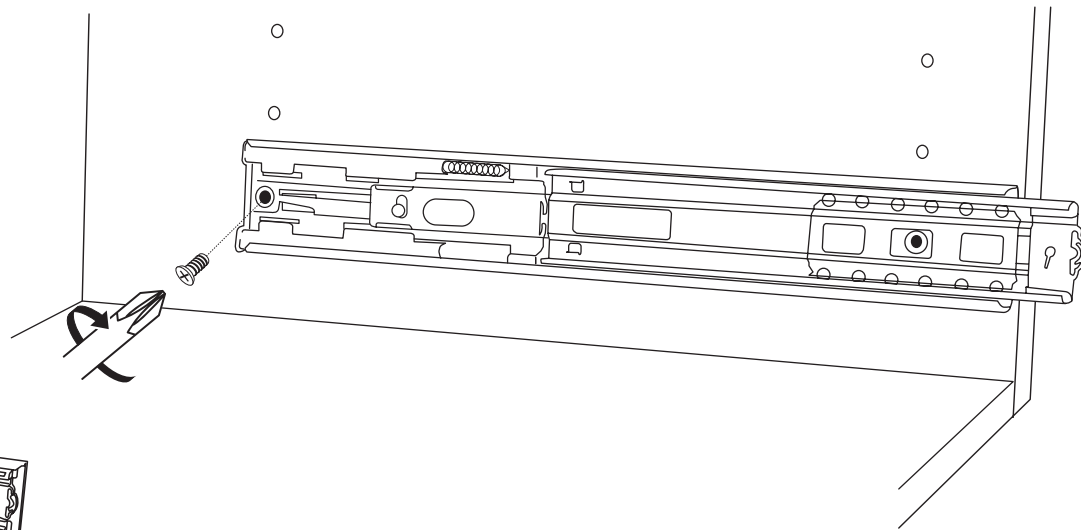
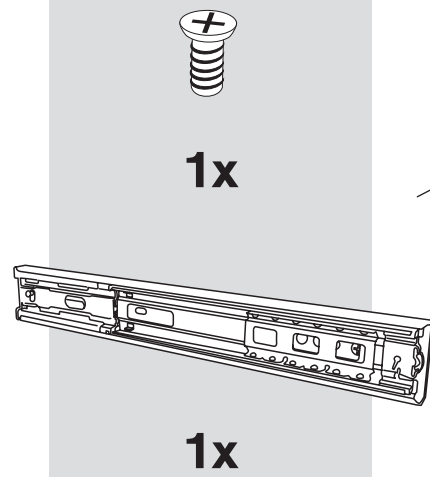
Install the first drawer runner above the bottom hinge plate. Adjust the spacing of the remaining inner drawer runners to accommodate the hinge positions.

### Cabinet Shell

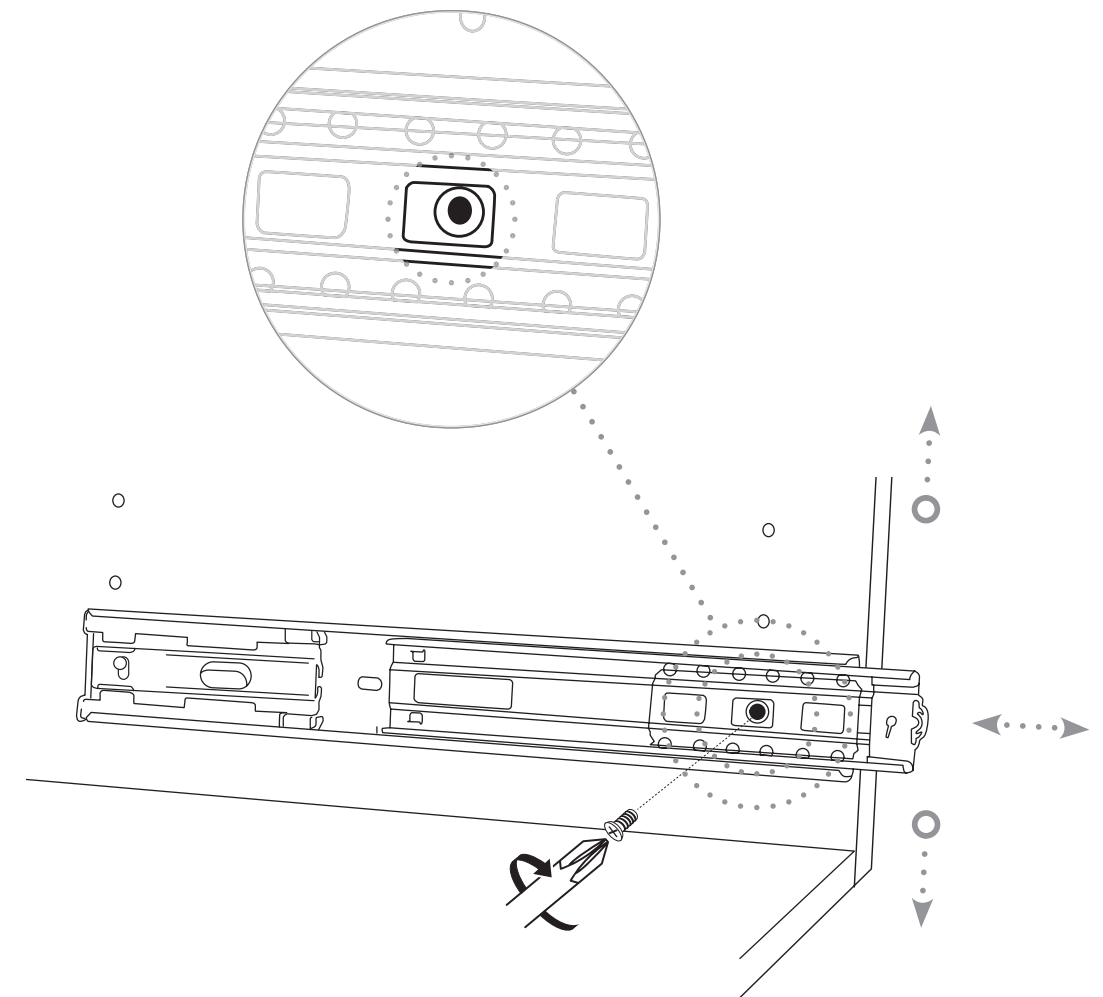
Drawer runner hole positions



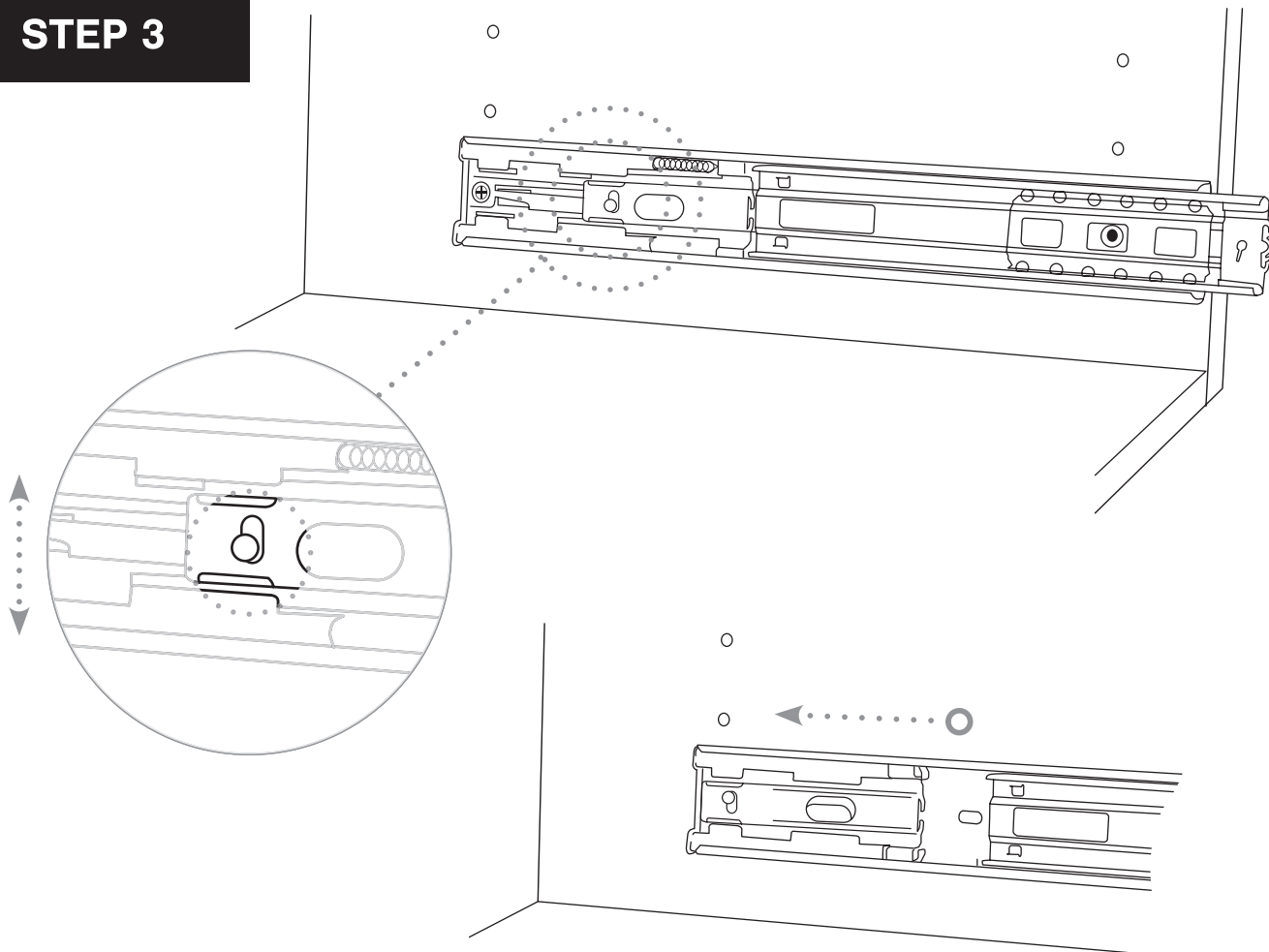
## STEP 2



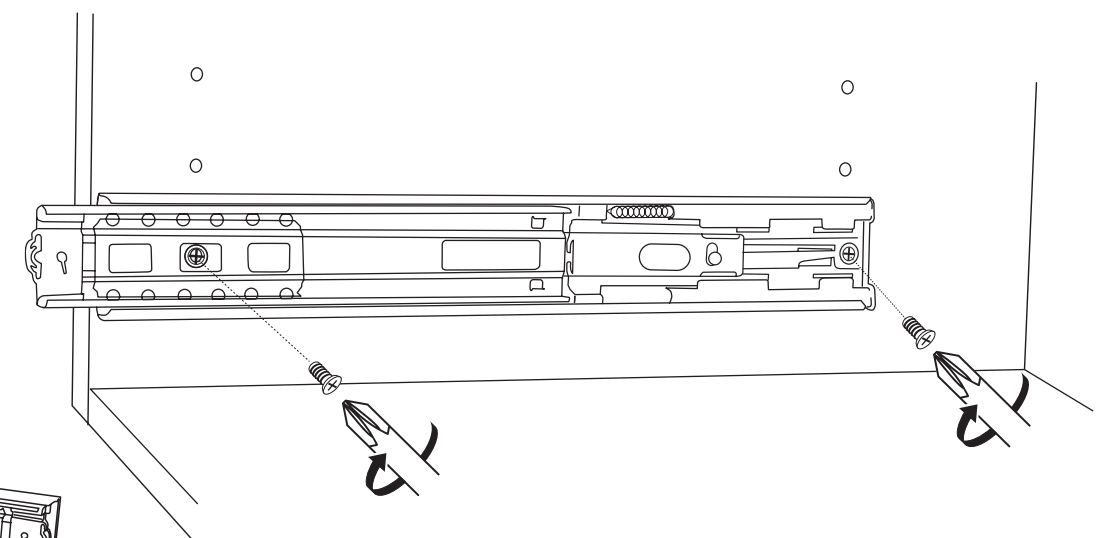
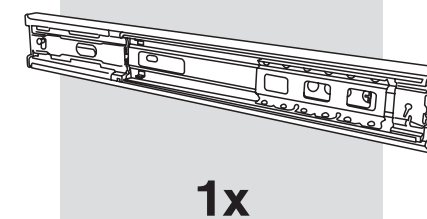
## STEP 4



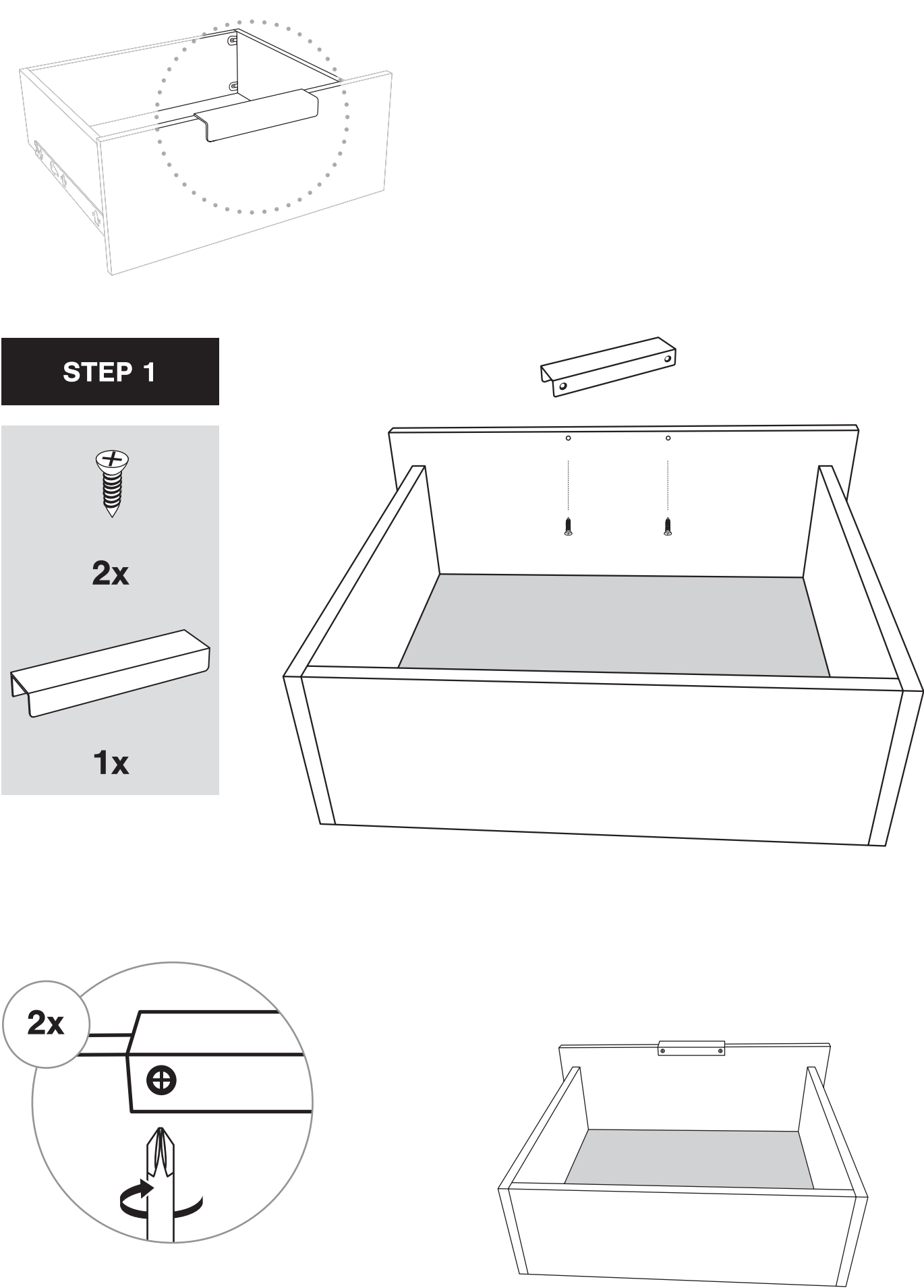
## STEP 3



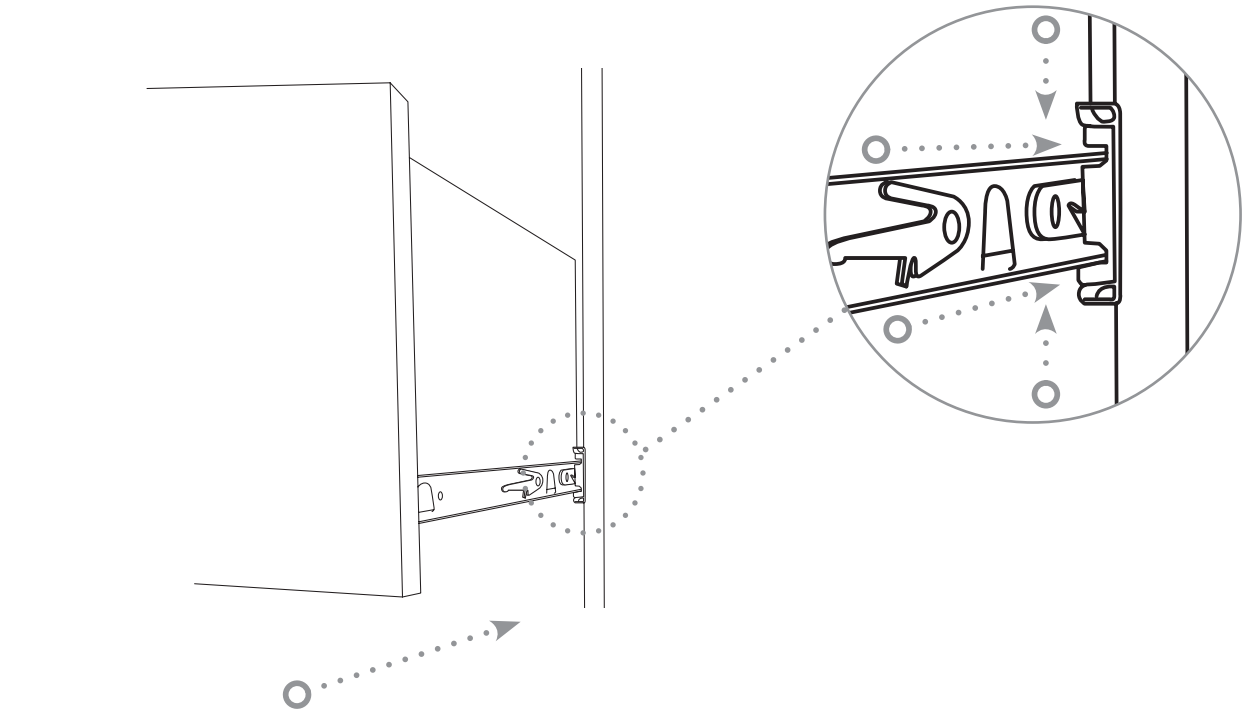
## STEP 5



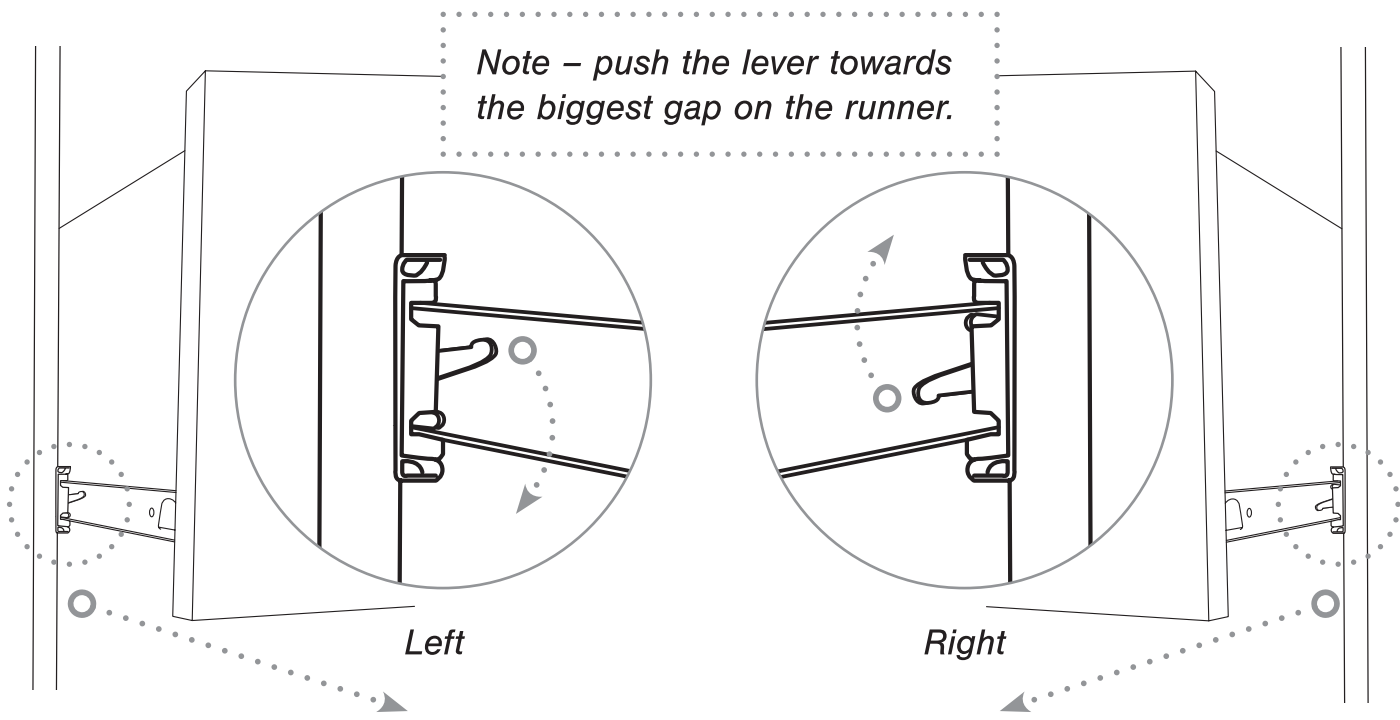
**Drawer - Handle Attachment**



**Drawer Insertion**



**Drawer Removal**





# LUGNA

## FORM & FUNCTION

### CABINET CARE INSTRUCTIONS

---

#### **Everyday care for your cabinets:**

*Liquid spills should be cleaned up as they occur. Liquids and other damp objects, i.e. towels, will eventually cause permanent damage should they be left unattended.*

*Everyday clean-up of cabinets can be done with a damp cloth and a dry cloth. Ensure you use a clean cloth every time when wiping down your cabinets, as foreign dirt, grease, and oils may inadvertently be transferred to the surface.*

#### **Cleaning melamine products:**

*Oils, grease, and other soils that do not respond to water can be removed with a solution of mild soap and water. The surface should be rinsed immediately with a clean, damp cloth and dried thoroughly with a soft cloth to avoid streaking or moisture seeping into the seams around the edges.*

**PLEASE NOTE: Never use abrasive cleaners, ammonia, bleaching agents, scouring pads or powdered cleaners on any type of cabinetry.**

#### **Cleaning cabinet hardware:**

*Brass and Silver cleaners are not recommended for cleaning handles. Some of these cleaning solutions contain harsh chemicals that may damage the finish on your handles.*

*Wash your hardware with a solution of warm water and a small amount of mild dish detergent. Dry your hardware and areas around the cleaned area immediately.*

*Hinges can be cleaned with a dry cloth or cotton-tipped swab.*