

# Deck

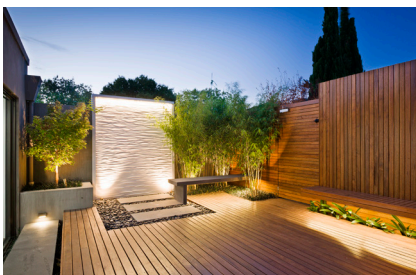
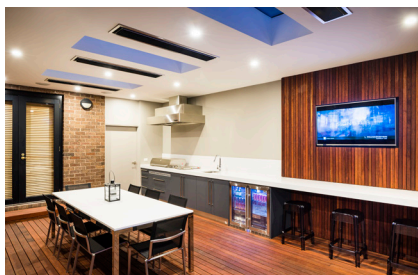
# SpecRite™



Manufactured For Results.

# MERBAU PRE-OILED FJ DECKING

SELECT GRADE HARDWOOD-KILN DRIED-AS2796.2 2006



- Wood from well managed forests
- Pre-oiled for 360 degree protection with **Feast Watson®** Industrial Timber Oil
- Approved for use in bushfire-prone areas, compliant to BAL29
- Select grade, kiln dried timber for stability and a high quality, clean appearance
- Durability class 1 (above ground) for a long life
- Naturally resistant to fungi and insects like termites and dry wood borers
- 25 Year Warranty (Limited to Joint Failure)



## Installation Guidelines

Max joist spacing - 450mm centres  
Min ground clearance - 400mm\*  
Min distance from side or end to fixed structures - 7mm  
Min distance from side edge for fixings - 12mm  
Min distance from end for fixings - 12mm

### Applications

Decking, fencing, screening and gates.

### Timber Quality

Select grade in compliance with AS2796.2-2006 and kiln dried for a long lasting, high quality appearance.

### Cutting

Tungsten carbide tipped cutting tools and high quality drill bits are recommended for best results. Apply decking oil to cut ends to maximise the life of your deck. Ensure appropriate eye, ear and breathing protection is used when cutting timber.

### Fixings

Decking should be fixed using hot dipped galvanised or stainless steel screws - two screws per joist. Screws should be pre-drilled and countersunk to avoid splitting the timber and to provide the best possible finish. Stainless steel fixings are recommended for coastal or poolside applications.

## Pre-Oiled Decking Information

This product has been primed with Feast Watson Industrial Timber Oil. A single coat has been applied to all four sides and is designed to help seal and protect your timber from moisture and UV before final topcoating. To fully protect your pre-oiled timber, **topcoating is required within 8-12 weeks of installation.**

### Topcoating

Your pre-oiled merbau can be topcoated with most water-based and oil-based finishes. When choosing a topcoat, the most suitable product is best determined by the preferred finish. To maintain or highlight the natural appearance of the timber, a transparent, lightly pigmented oil is recommended such as Feast Watson Traditional Timber Oil. For longer lasting protection, Intergrain UltraDeck Timber Oil is recommended. To transform the colour of the timber, a semi-transparent stain such as Intergrain UltraDeck Timber Stain will impart a deeper colour whilst allowing the timber grain to show through. Timber will naturally go grey if left unfinished.

### Slip Rating Information

This product does not have a slip resistance rating in its pre-oiled condition. If slip resistance is required (e.g. decking adjacent to a pool), apply a specialised slip resistant finish such as Intergrain UltraDeck Slip Resistant.

## 25 Year Warranty Information (Limited to Joint Failure)

### Applicable Products

Item No. 0177416	Merbau Pre-Oiled FJ Side Joint Decking 90mm x 19mm x 5700mm
Item No. 0177414	Merbau Pre-Oiled FJ Side Joint Decking 140mm x 19mm x 5700mm
Item No. 0177415	Merbau Pre-Oiled FJ Side Joint Decking 90mm x 19mm x 2700mm
Item No. 0177417	Merbau Pre-Oiled FJ Side Joint Decking 140mm x 19mm x 2700mm

## Terms of Warranty

The warranty applies to the finger joint component of the above products exposed to normal wear for their recommended end category, installed according to the relevant state building construction code. This includes complying with the above installation guidelines.

The warranty applies from the date of purchase and is non-transferable. The warranty does not apply if the decking is used for commercial applications or is submitted to chemical or mechanical stress. Improper installation techniques will void the warranty.

Any claim under this warranty must be made within 25 years of the date of purchase of the product. To make a claim under the warranty, take the product (with proof of purchase) to any Bunnings store (see [www.bunnings.com.au](http://www.bunnings.com.au) for store locations).

Bunnings Group Ltd bears reasonable direct expenses of claiming under the warranty. You may submit details and proof to our store for consideration. The warranty covers manufacturer defects in materials, workmanship and finish under normal use.

This warranty is provided in addition to other rights and remedies you may have under law: our goods come with guarantees which cannot be excluded under Australian Consumer Law. You are entitled to a replacement or refund for a major failure and to compensation for other reasonably foreseeable loss or damage.

You are also entitled to have the goods repaired or replaced if the goods fail to be of acceptable quality and the failure does not amount to a major failure.

### Ventilation

90mm x 19mm decking requires a minimum 4.5mm ventilation gap between boards and 140mm x 19mm decking requires a minimum 7mm gap between boards.

\*A minimum ground clearance of 400mm is recommended to allow for adequate ventilation. Additional side and top ventilation is required if the deck is installed with less than 400mm clearance.

### Storage

Decking should be stored flat, off the ground and protected from the weather prior to installation.

**Tannin Warning:** Merbau's superior strength and stability are attributable to its tannin-rich properties, resulting in low shrinkage and minimal surface and end splitting. Tannin is a naturally occurring substance in timber which will leach the first few times it is exposed to moisture, staining timber, paved areas and other nearby surfaces. Objects left on the timber surface will also draw tannin out, creating surface marks. A thorough and regular hose down during the first few days will assist in flushing excess tannin away and minimise subsequent staining.

To ensure you are completely satisfied with your chosen coating and colour, we recommend you first test the coating on a small inconspicuous area.

### Step 1

To prepare timber for topcoating, ensure the surface is clean. If required, thoroughly scrub with Feast Watson Wood Clean. A high strength timber cleaner removes dirt, grease, tannin stains and other contaminants to optimise topcoat performance.

### Step 2

Allow the timber to dry and apply two coats of your chosen finish following label instructions. Coating can be walked on after 48 hours, but allow at least 7 days to dry before replacing furniture.

### Maintenance

Refer to the topcoat label for product specific maintenance information. We recommend regularly monitoring the coated timber for signs of colour loss, dryness and weathering. Recoat the timber when it begins to show signs of dryness to help maintain its natural beauty and protection. When required, clean the surface using a timber cleaner, allow the surface to dry and recoat with one coat of the original coating, following label instructions. For a longer lasting finish, apply a second coat.

**For further information on Intergrain products contact Intergrain Customer Services on 1800 630 285 or visit [intergrain.com.au](http://intergrain.com.au).**

This warranty excludes damage resulting from product misuse or product neglect.

### Claims

Any claim due to defects of your finger joint decking must be made in writing and be accompanied by this warranty sheet and the original purchase receipt. The claim must be lodged within 30 days of the defect in question having become apparent. We reserve the right to inspect the defect or to have it inspected by our authorised agent before recognising the claim.

### Compensation Under Warranty

All warranty claims will be strictly in proportion to the market value of the goods in question. The market value will be determined on the basis of the warranty period, e.g. the compensation payable in the case of a 25-year warranty would be reduced by 25% every year. If the claim under warranty is accepted, the customer will be provided with the necessary replacement boards free of charge by the seller. The cost of re-laying the decking is to be incurred by the customer. Any damages caused through accident, misuse or negligence are not covered by the warranty. If replacement finger joint decking is not available in the original specifications, a suitable selection will be made from the product range available at that time.

**This warranty is given by Bunnings Group Limited ABN 26 008 672 179, Botanicca 3, Level 2 East Tower, 570 Swan Street, Burnley, Victoria 3121, email [CustomerSupport@bunnings.com.au](mailto:CustomerSupport@bunnings.com.au) or call 1800 797 586**



Available at  
**BUNNINGS**  
warehouse