



R18FRF142
R18FRF10



IMPORTANT!

It is essential that you read the instructions in this manual before assembling, operating, and maintaining the product.

Subject to technical modification.

Safety, performance, and dependability have been given top priority in the design of your hybrid cooler.

INTENDED USE

The hybrid cooler keeps products inside refrigerated for use during leisure activities, such as camping. The product also allows dry and wet storage for food and beverages.

The product can be powered by more than one power source, either with a removable battery pack or an external power supply.

The product is intended only for domestic use in staff kitchens, offices, farmhouses, catering, or accommodations, such as bed and breakfasts, motels, hotels or similar environments. The product is not designed for retail use.

Do not use the product for any other purpose.

GENERAL SAFETY WARNINGS

- The product is not intended for use by children or persons with reduced physical, sensory, or mental capabilities, or lack of experience and knowledge. Children should be adequately supervised to ensure that they do not play with the product.
- Save these instructions. Refer to them frequently and use them to instruct others who may use the product. If you loan someone the product, loan them these instructions also to prevent misuse of the product and possible injury.
- Inspect the product before each use. Check for loose fasteners, etc. Make sure that all guards and handles are properly and securely attached. Replace any damaged parts before use. Check for battery pack leaks.
- Do not modify the product in any way or use parts and accessories that are not recommended by the manufacturer. This may increase the risk of serious injury to yourself or others.
- Dress properly. Do not wear loose clothing or jewellery. Keep your hair and clothing away from moving parts. Loose clothes, jewellery or long hair can be caught in moving parts.
- Exercise caution to avoid slipping or falling.
- Keep water away from all electrical devices to reduce the risk of electrocution or electric shock.
- Use caution when using the product in windy conditions. Winds may carry mists into electrical wiring or devices.
- If operating a power tool in a damp location is unavoidable, use a residual current device (RCD) protected supply. Use of an RCD reduces the risk of electric shock.
- Do not place the product near fire or heat.
- Do not expose the product to rain, wet, or damp conditions. Water entering the product increases the risk of electric shock.
- Do not place multiple portable outlets or power supplies behind the product.
- Keep ventilation openings, in the product enclosure or in the built-in structure, clear of obstructions.
- Do not operate the product in explosive atmospheres, such as in the presence of flammable liquids, gases, or dust. The product creates sparks, which may ignite dust or fumes.
- Do not operate the product near any heat sources, such as radiators, heat registers, stoves, or other apparatus (including amplifiers) that produce heat.
- Do not use the product to exhaust hazardous or explosive materials and vapors.
- Do not touch moving parts. Keep all parts of your body away from any moving part.
- Never operate the product unless all parts are securely attached.
- Ensure that all connections are secure before using the product. Spilled water and leaks can result in a slippery surface and create a slip and fall hazard.
- Do not let familiarity gained from frequent use of the product allow you to become complacent and ignore safety principles. A careless action can cause severe injury within a fraction of a second.
- Turn off the product, remove the battery pack or disconnect the product from the power supply, and allow both to cool down. Make sure that all moving parts have come to a complete stop:
 - before servicing

- before clearing a blockage
- before checking, cleaning, or working on the product
- before changing accessories
- before leaving the product unattended
- before checking for damage after striking a foreign object
- whenever performing maintenance
- Immediately turn off the product and remove the battery pack in the event of an accident or breakdown. Never operate the product again until it has been fully checked by an authorised service centre.

ELECTRICAL SAFETY

- Make sure that the voltage is correct for your product. A nameplate on the product indicates the product's voltage. Never connect the product to an AC voltage that differs from this voltage.
- Electrical power should be supplied via a residual current device (RCD) with a tripping current of not more than 30 mA.
- Before use, check the power cord for signs of damage or aging. If the cord becomes damaged during use, disconnect the cord from the supply immediately. Do not touch the cord before disconnecting the supply. Do not use the product if the cord is damaged or worn.
- Power plugs must match the outlet. Never modify the plug in any way. Do not use any adapter plugs with earthed (grounded) power tools. Unmodified plugs and matching outlets will reduce risk of electric shock.
- Avoid body contact with earthed or grounded surfaces, such as pipes, radiators, ranges and refrigerators. There is an increased risk of electric shock if your body is earthed or grounded.
- Keep the power cord away from heat, oil and sharp edges.
- Never pull by the power cord to disconnect the product from the power supply.

BATTERY TOOL USE AND CARE

- Remove the battery pack from the product before charging.
- Recharge only with the charger specified by the manufacturer. A charger that is suitable for one type of battery pack may create a risk of fire when used with another battery pack.

- Do not mix battery packs of different types or levels of use.
- Use only battery packs intended specifically for the product. Use of any other battery packs may result in a risk of fire, electric shock, or injury to persons.
- Do not use a battery pack or tool that is damaged or modified. Damaged or modified batteries may exhibit unpredictable behaviour resulting in fire, explosion or risk of injury.
- Do not expose a battery pack or tool to fire or excessive temperatures. Exposure to fire or temperature above 130 °C may cause an explosion.
- When the battery pack is not in use, keep it away from other metal objects, such as paper clips, coins, keys, nails, screws, or other small metal objects that can make a connection from one terminal to another. Shorting the battery pack terminals may cause burns or a fire.
- Under abusive conditions, liquid may be ejected from the battery pack; avoid contact. If contact accidentally occurs, flush with water. If liquid contacts eyes, seek medical help. Liquid ejected from the battery pack may cause irritation or burns.

HYBRID COOLER SAFETY WARNINGS

- Use the product with the provided supply cord only.
- Insert the plug properly into the DC inlet. Failure to do so may deform the plug or cause a fire.
- Use caution when positioning the product for use. Make sure that the supply cord is not trapped or damaged. Never direct air flow toward any electrical wiring or devices.
- Make sure that the lid is securely closed, and the battery compartment is securely latched before turning on the product.
- If the product is operated indoors, make sure that the room or area is well-ventilated.
- Do not stand or sit on the lid.
- Do not insert fingers, hands, body parts, or objects into the vent during use to reduce the risk of electric shock or other serious personal injury.
- Do not use the product to disperse liquid medicines, chemicals, or other liquids.

These substances could result in serious injury or illness to the operator or bystanders.

- Do not use electrical appliances inside the food storage compartments of the product other than those that are recommended by the manufacturer.
- To reduce the risk of electric shock, always remove the battery pack or disconnect the power cord from the power supply before adding ice.
- Ensure that the drain plug is secured in place and that the product does not leak or spill water when filling or draining the product. Do not overfill. Leaks can result in a slippery surface and create a slip and fall hazard and/or cause property damage.
- Use only ice made from water. Never use dry ice in the product. Contact with dry ice can cause serious personal injury and damage the product. Dry ice can also displace oxygen and cause a suffocation hazard.
- Do not add salt to the ice used to fill the product. Salt can damage the product and its components.
- Do not operate the product in hot places, such as in a car under the sun or near heating materials. The cooling performance of the product may be reduced or a gas leak may cause a fire.
- Do not operate the product while driving. This may cause an accident.
- When using the product in a car, make sure to install the product in a stable location, such as the luggage space or the feet of the rear seats. Make sure to fix the product in place. Do not place the product on the seat or in an unstable location. If the car suddenly starts or stops while driving, the product may move and fall over, which may cause injury.
- When the product is connected to an automobile and the automobile battery capacity is low, use the product with the engine running. After using the product, unplug the 12 V adaptor to prevent loading the automobile battery.
- Do not touch the plug of the 240 V AC adaptor or 12 V adaptor immediately after operation. The adaptors may be hot and could cause burns.
- Do not overfill the product with food and drinks. The cooling performance of the product may be reduced, causing spoilage.
- Do not put water or liquids directly in the product. Water may get inside the product and cause a malfunction. If water has accumulated in the cooler compartment, wipe it off with a dry cloth.
- Ensure that the product does not run out of battery charge while storing food and drinks. Do not store opened food for a long time. This may cause spoilage.
- Do not use mechanical devices or other means to accelerate the defrosting process.
- Always completely drain water from the product and thoroughly dry it after use to prevent the possible formation of bacteria or mold. Using the product if it contains bacteria or mold can result in serious personal injury or illness.
- Always empty excess water from the product before lifting by the handle. Do not empty water on a walkway. Empty only in an area that will not cause a slip and fall hazard.
- Move the product by lifting the handle and pulling the product on its wheels only. Do not tilt or tip over the product. Tilting or tipping the product can cause water to spill, resulting in possible electric shock, slip and fall hazard, or property damage.
- Hold the product firmly when carrying it. Otherwise, the product may fall and cause a malfunction or injury.
- Be sure to keep fingers out of the way when closing the lid. Closing the lid on fingers or getting them too close to the hinge area can cause a pinch hazard and result in serious personal injury.
- Do not store explosive substances, such as aerosol cans with a flammable propellant in the product.
- Do not tamper with the refrigerant circuit behind the product to avoid damaging it.
- Do not disassemble the product.

USING THE CONTROL PANEL

The control panel contains the function controls of the product. When the product is turned on, there is a long beeping sound, and the control panel turns on for 2 seconds then enters into standby mode.

Function	Description
Power button	Turns the product on or off.
Cooling mode	Toggles between fast cooling or energy saving.
Temperature control	Adjusts the cooling or heating temperature.
Temperature unit setting	Adjusts the temperature unit to Celsius or Fahrenheit.
Battery protection mode	Protects the installed battery pack from overvoltage. Set H (high) protection mode when connecting the product to car power. Set M (medium) or L (low) protection mode when connecting to a portable or back-up power source.
Reset mode	Resets the product. Activate the reset mode to revert the product to its factory settings.

ADDITIONAL BATTERY SAFETY WARNINGS

To reduce the risk of fire, personal injury, and product damage due to a short circuit, never immerse the product, battery pack, or charger in fluid or allow fluid to flow inside them. Corrosive or conductive fluids, such as seawater, certain industrial chemicals, and bleach or bleach-containing products, etc., can cause a short circuit.

TRANSPORTATION AND STORAGE

- Drain all water, remove food and drinks from the product, and wipe the interior with a clean, dry cloth. Remove the battery pack and make sure that all compartments are securely closed. Store the product with the handle folded down.
- Do not store or transport the product with the battery pack fitted. Remove the battery pack, and secure it separately. Store the product in a cool, dry, and well-ventilated place that is inaccessible to children. Keep the product away from corrosive agents, such as garden chemicals and de-icing salts. Do not store the product outdoors.
- When transporting the product in a vehicle, secure it against movement or falling to

prevent injury to persons or damage to the product.

TRANSPORTING LITHIUM BATTERIES

Transport the battery in accordance with local and national provisions and regulations.

Follow all special requirements on packaging and labelling when transporting batteries by a third party. Ensure that no batteries can come in contact with other batteries or conductive materials while in transport by protecting exposed connectors with insulating, nonconductive caps or tape. Do not transport batteries that are cracked or leaking. Check with the forwarding company for further advice.

MAINTENANCE

- Use only original manufacturer's replacement parts, accessories, and attachments. Failure to do so can cause possible injury, can contribute to poor performance, and may void your warranty.
- Servicing requires extreme care and knowledge and should be performed only by a qualified service technician. Have the product serviced by an authorised service centre only.
- You may make adjustments and repairs described in this manual. For other repairs, contact an authorised service centre.
- Avoid using solvents when cleaning plastic parts. Most plastics are susceptible to damage from various types of commercial solvents and may be damaged by their use. Use clean cloths to remove dirt, dust, oil, or grease. Do not at any time let brake fluids, gasoline, petroleum-based products, or penetrating oils come in contact with plastic parts. Chemicals can damage, weaken, or destroy plastic, resulting in serious personal injury.
- Bring the product to an authorised service centre to replace damaged or unreadable labels.
- If the supply cord is damaged, it must be replaced by a special cord or assembly available from the manufacturer or its service agent.
- The product does not contain gasses, in either its refrigerant circuit or insulation materials, which could damage the ozone layer. Do not discard the product together with urban waste.

- The insulation foam contains flammable gases. Dispose of the product according to local regulations. Avoid damaging the cooling unit, especially the heat exchanger.
- The product uses flammable refrigerants. Read and follow these instructions for handling the product. When disposing the product, follow local regulations relating to the disposal of flammable refrigerants.

SYMBOLS ON THE PRODUCT



Safety alert



Read and understand all instructions before operating the product. Follow all warnings and safety instructions.



Class III electrical protection



Do not expose the product to rain or damp conditions.



Regulatory Compliance Mark (RCM). The product meets applicable regulatory requirements.



Risk of fire. Use the product with the provided power supply unit only.



Do not dispose of waste batteries, waste electrical and electronic equipment as unsorted municipal waste. Waste batteries and waste electrical and electronic equipment must be collected separately. Waste batteries, waste accumulators, and light sources have to be removed from the equipment. Check with your local authority or retailer for recycling advice and collection point. According to local regulations, retailers may have an obligation to take back waste batteries and waste electrical and electronic equipment free of charge. Your contribution to the reuse and recycling of waste batteries and waste electrical and electronic equipment helps to reduce the demand of raw materials. Waste batteries, in particular containing lithium, and waste electrical and electronic equipment contain valuable and recyclable materials, which can adversely impact the environment and the human health if not disposed of in an environmentally compatible manner. Delete personal data from waste equipment, if any.

SYMBOLS IN THIS MANUAL



Parts or accessories sold separately

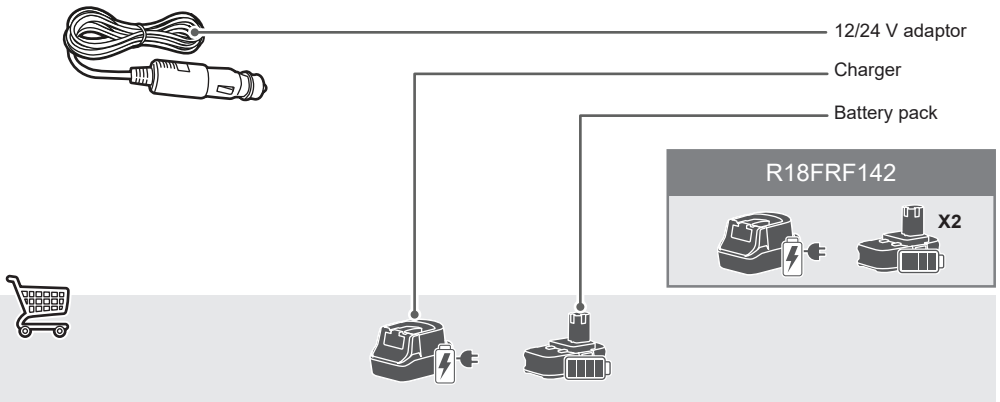
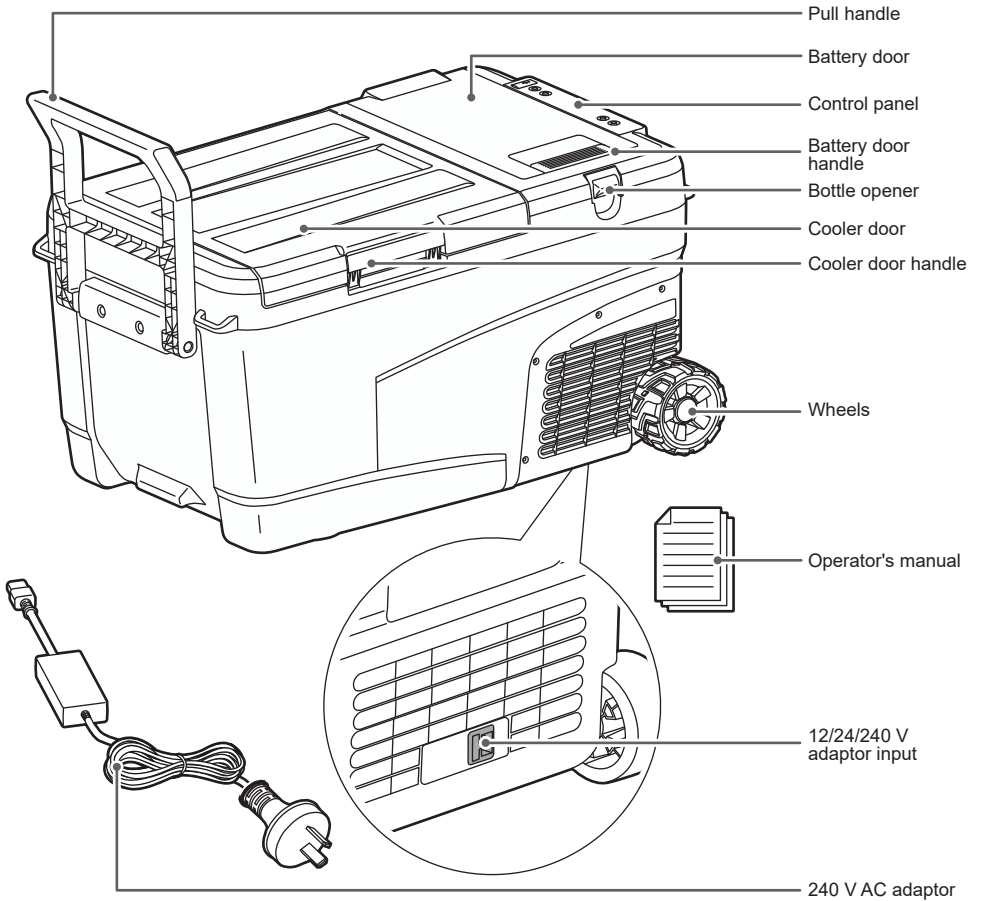


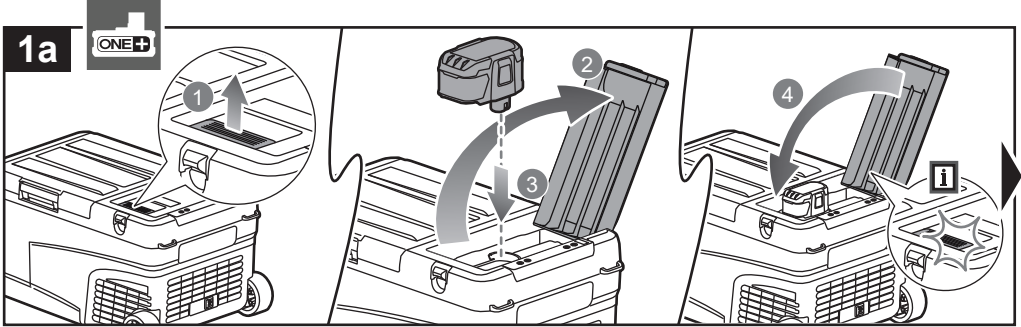
Note



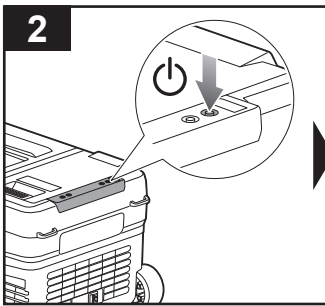
Warning

R18FRF10

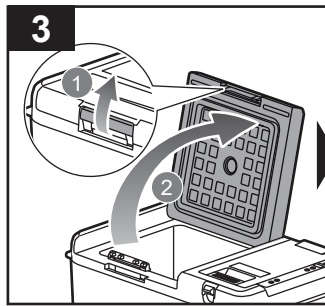




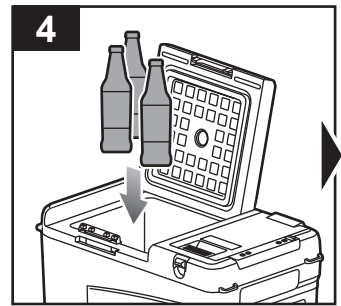
Unlock and open the battery door. Insert the battery pack until the latches click into place. Close the battery door. Make sure that the battery door latch clicks into place.



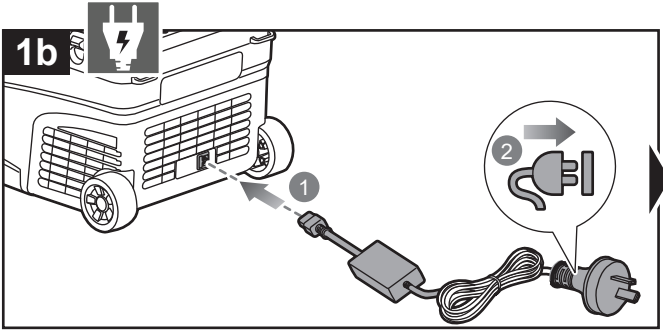
Press the power button to turn on the product.



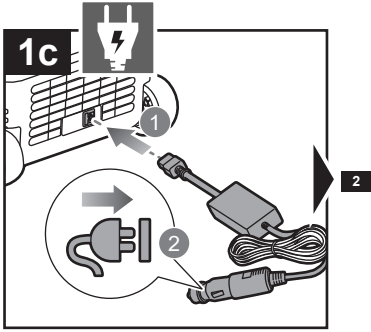
Unlock and open the cooler door.



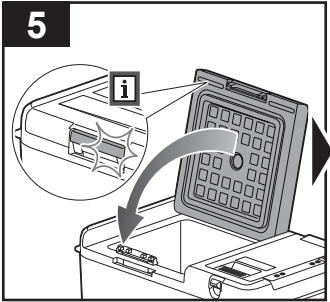
Place food or beverages inside the cooler compartment.



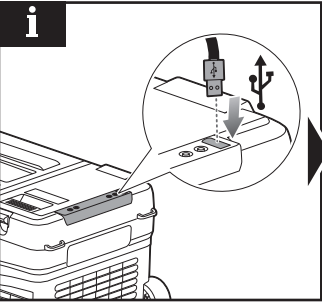
Insert the 240 V AC adaptor into the adaptor input. Connect the plug to a power outlet.



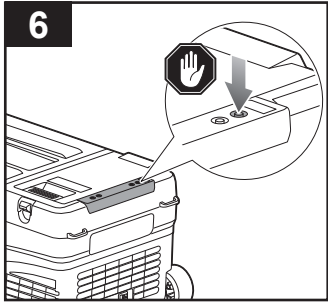
Insert the 12/24 V adaptor into the adaptor input. Connect to a 12/24 V socket.



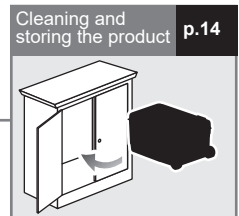
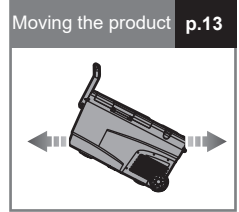
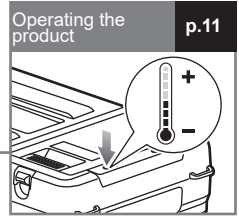
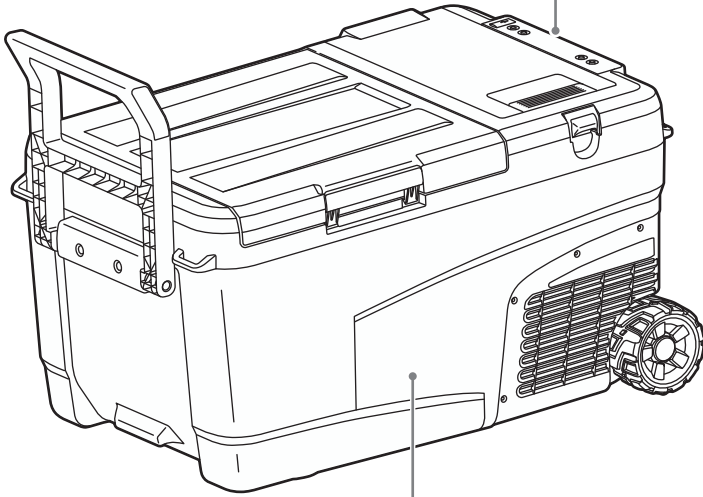
Close the cooler door. Make sure that the cooler door latch clicks into place.

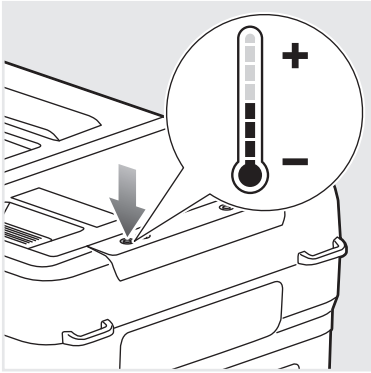


NOTE: Once the product is on, it can charge USB devices. The charging port provides power only. It does not provide any communication capabilities.



After using the product, press the power button to turn it off.



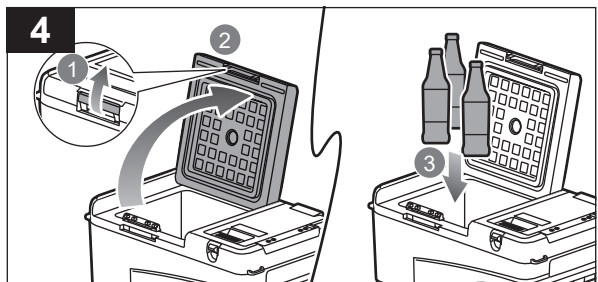
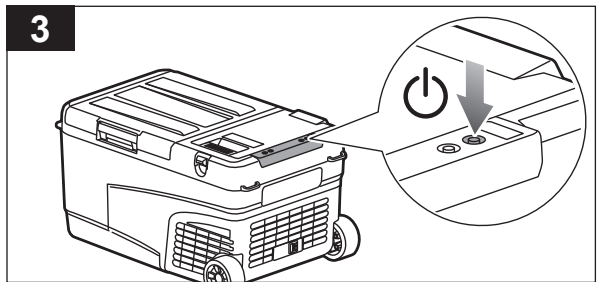
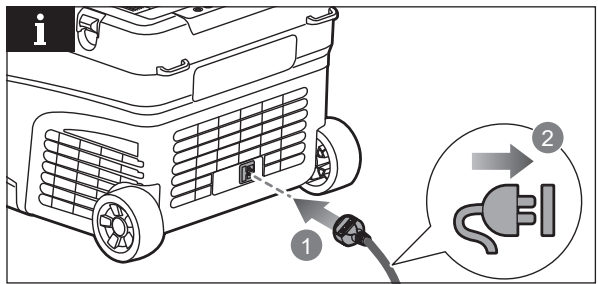
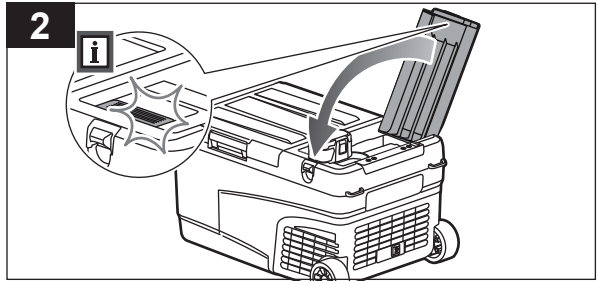
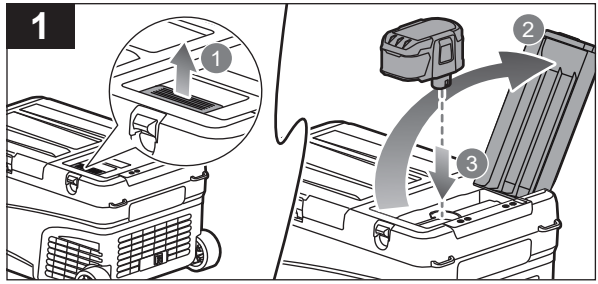


OPERATING THE PRODUCT

1. Unlock and open the battery door. Insert the battery pack until the latches click into place.
2. Close the battery door. Make sure that the battery door latch clicks into place.

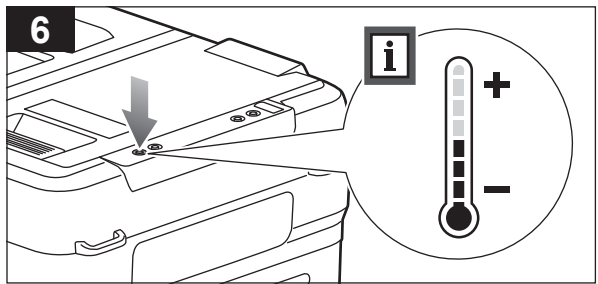
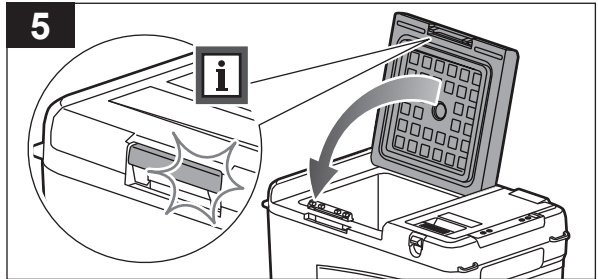
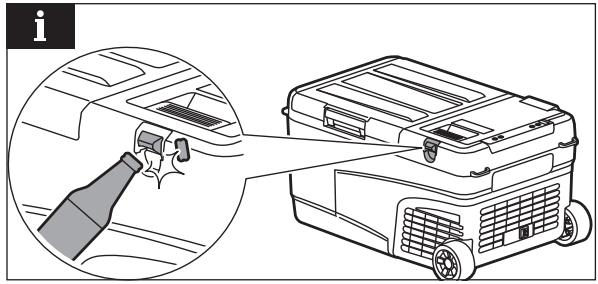
NOTE: To operate the product using AC supply, insert the 240 V AC adaptor into the adaptor input and connect the plug to a power outlet.

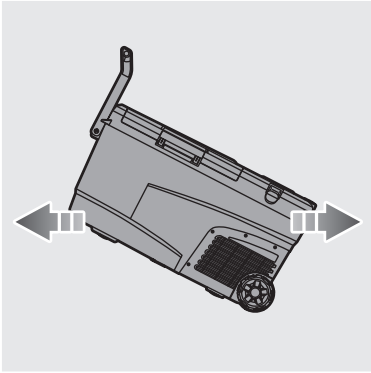
3. Press the power button to turn on the product.
4. Unlock and open the cooler door. Place food or beverages inside the cooler compartment.



NOTE: The bottle opener on the product can be used to open bottles.

5. Close the cooler door. Make sure that the cooler door latch clicks into place.
6. Press the temperature control button to adjust the temperature inside the cooler compartment.

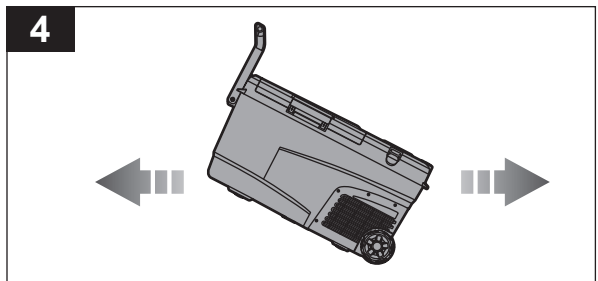
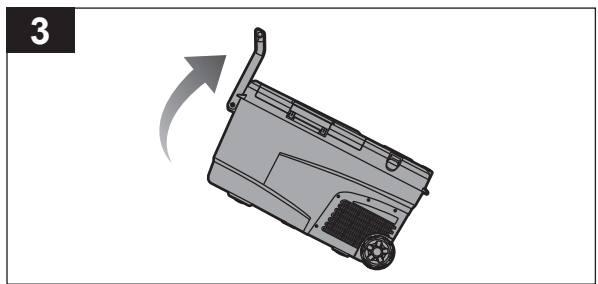
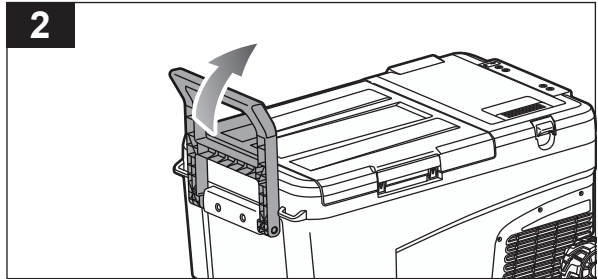
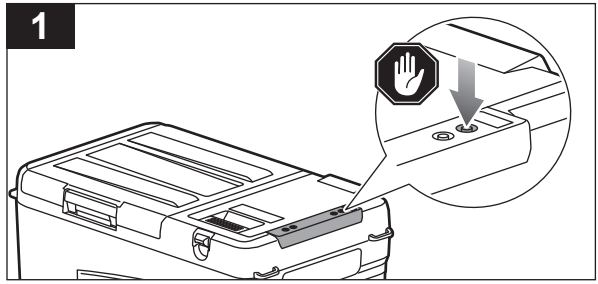


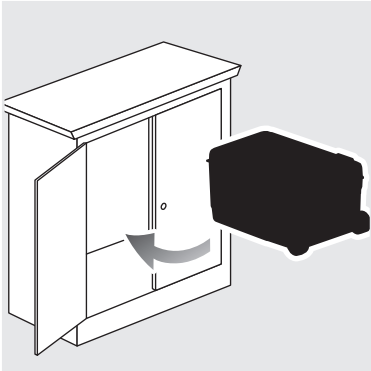


MOVING THE PRODUCT

1. Press the power button to turn off the product.
2. Hold the pull handle.
3. Lift the product using the pull handle.
4. Move the product forward or backward.

NOTE: There are sensors in the product that prevent it from damage if it is lifted while still turned on. Always turn off the product before moving to prevent damage to the product.





CLEANING AND STORING THE PRODUCT

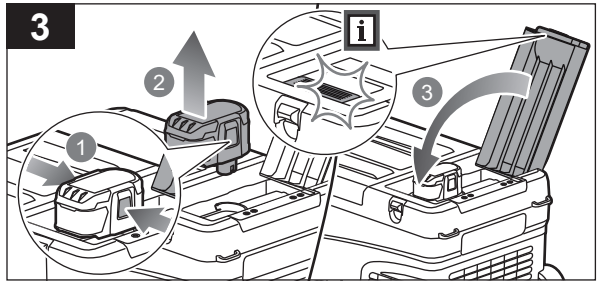
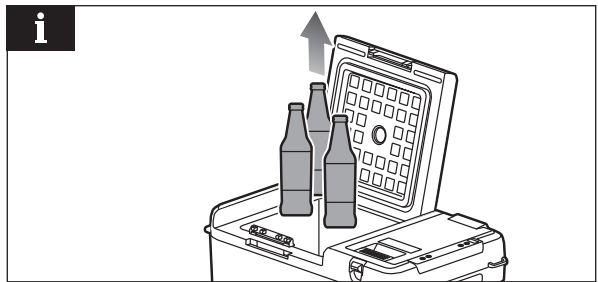
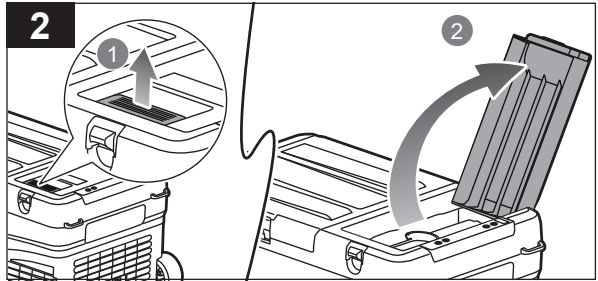
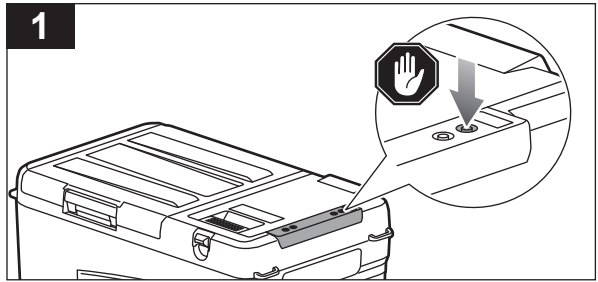
1. Press the power button to turn off the product.

2. Unlock and open the battery door.

NOTE: Make sure to remove the food or beverage stored in the cooler compartment.

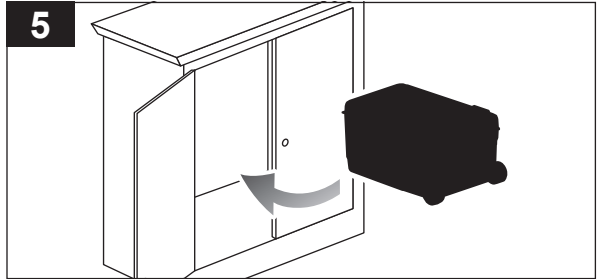
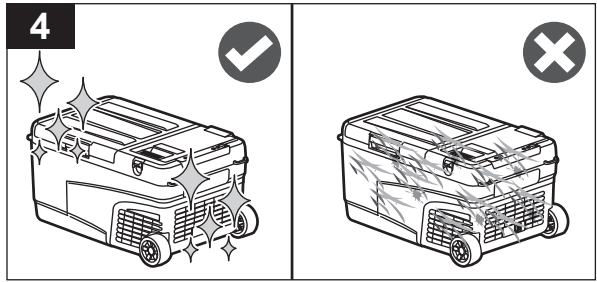
3. Press the latches on the battery pack to remove it from the product. Close the battery door. Make sure that the battery door latch clicks into place.

NOTE: Make sure to clean the product with a soft, dry cloth. Do not use water or soap to clean the product.



4. Clean and remove dirt or debris from the product before storing.
5. Store the product in a cool, dry, and well-ventilated place that is inaccessible to children. Keep the product away from corrosive agents, such as garden chemicals and de-icing salts. Do not store the product outdoors.

NOTE: Always store the product with its base on the ground and the cooler door and battery door facing up. Never store the product on its ends or upside down.



PRODUCT SPECIFICATIONS

Hybrid cooler

Model	R18FRF10
Rated voltage	18 V d.c.
Rated power	60 W
Dimensions (w x l x h)	666 x 391 x 354 mm
Storage capacity	23 L
USB voltage	5 V d.c.
USB charging rate	1 A
Climate class	T, ST, N, SN
Cooling temperature range	
Minimum	-20°C
Maximum	20°C
Refrigerant type (not serviceable)	R1234YF
Weight	24 g
Insulation material type: PU foam	
Weight (without load and battery pack)	13.5 kg
Weight (without load and with heaviest battery pack)	15 kg

BATTERY AND CHARGER

Model	R18FRF142	R18FRF10
Battery pack	RB1840C x 2	-
Charger	RC18120	-
Compatible battery packs	RB18L13, RBL13, RB18L13Z, RB18L15B, RB18L15, RB18L15A, RB1815C, RB18L20, RB18L20A, RB1820C, RB18L25, RB18L25A, RB1825C, RB18L26, RB18L30, RB18L30A, RB18L40, RB18L40A, RB1840C, RB1840X, RB18L40, RB18L40A, RB18L50, RB18L50A, RB1850C, RB1850X, RB18L60, RB18L60A, RB1860X, RB18L90, RB18L90A	

NOTE: Visit your local special orders desk or contact RYOBI customer service for replacement parts.

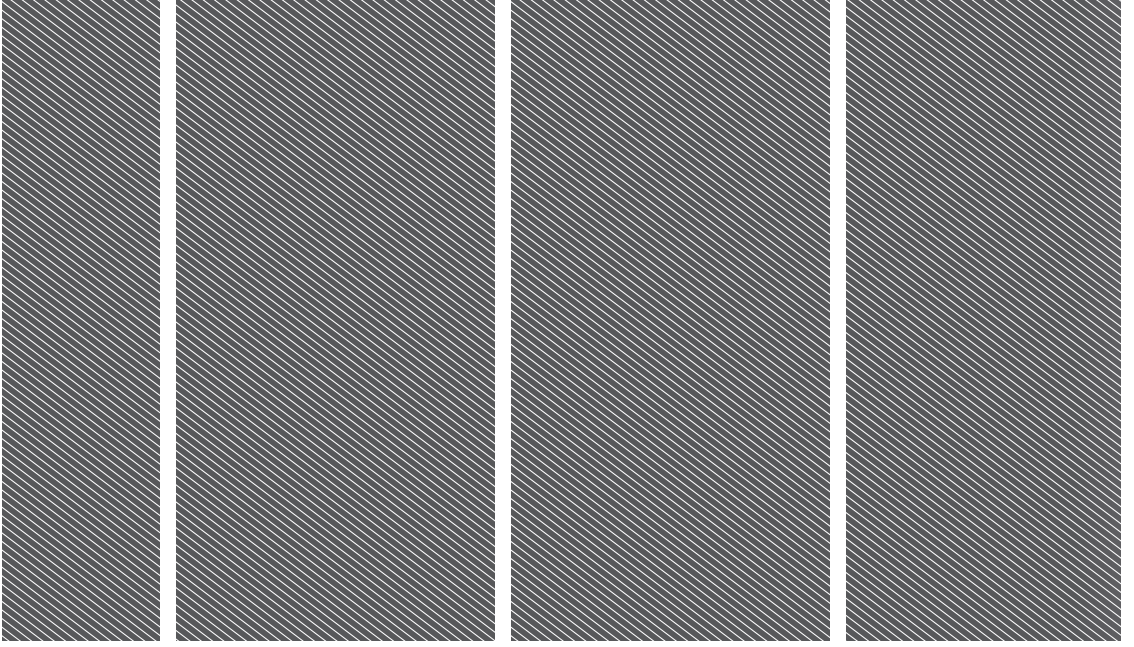
TROUBLESHOOTING

If these solutions do not solve the problem, contact an authorised service centre.

Problem	Possible cause	Solution
The product does not turn on.	The power button has not been pressed.	Press the power button.
	The adaptor is not connected to the adaptor input or power outlet properly.	Insert the adaptor to the adaptor input and the power outlet properly.
	The fuse is burned.	Replace the burned fuse with a 12 V 6 A fuse. Make sure that it is original and purchased from the manufacturer only.
	The power supply is malfunctioning.	Connect the product to another power supply.
The cooler compartment is too warm.	The cooler door is opened too frequently.	Make sure to close the cooler door when not putting in or taking out food or beverages.
	There is a large amount of warm or hot food placed in the cooler compartment recently.	Do not place warm or hot food in the cooler compartment to avoid damaging the product.
	The product has been disconnected for a long time.	Clean the cooler compartment and connect the product to the power outlet again.
The food in the cooler compartment is frozen.	The temperature is set too low.	Press the plus button (+) to set a higher temperature.
There is a water flowing noise coming from inside the product.	This is normal and is caused by the flow of the refrigerant.	-
There are waterdrops around the product or the cooler door gap.	This is normal. This is moisture that has condensed to water as it touched the cold surface of the product.	-
The compressor is slightly noisy when turning on the product.	This is normal. The noise will be reduced once the compressor becomes more stable.	-
The F1 code is displayed on the control panel.	The product is in low voltage.	Adjust the battery protection mode from High to Medium or from Medium to Low.
The F2 code is displayed on the control panel.	The condenser fan is overloaded.	Disconnect the product from the power outlet for 5 minutes. Connect the product to the power outlet again. If the code shows again, contact an authorised service centre.
The F3 code is displayed on the control panel.	The compressor starts too frequently.	Disconnect the product from the power outlet for 5 minutes. Connect the product to the power outlet again. If the code shows again, contact an authorised service centre.
The F4 code is displayed on the control panel.	The compressor is not starting.	Disconnect the product from the power outlet for 5 minutes. Connect the product to the power outlet again. If the code shows again, contact an authorised service centre.
The F5 code is displayed on the control panel.	The compressor and the electronics of the product are overheating.	Disconnect the product from the power outlet for 5 minutes. Connect the product to the power outlet again. If the code shows again, contact an authorised service centre.
The F6 code is displayed on the control panel.	The controller is not detecting any parameter.	Disconnect the product from the power outlet for 5 minutes. Connect the product to the power outlet again. If the code shows again, contact an authorised service centre.
The F7 or F8 code is displayed on the control panel.	The temperature sensor is faulty.	Contact an authorised service centre.







Imported by:
Techtronic Industries Australia Pty Ltd
31 Gilby Road, Mount Waverley, VIC 3149
Melbourne, Australia

Techtronic Industries N.Z. Limited
Unit C, 70 Business Parade South,
Highbrook, Auckland 2013, New Zealand

RYOBI is a trade mark of Ryobi Limited, and is used under license.

