

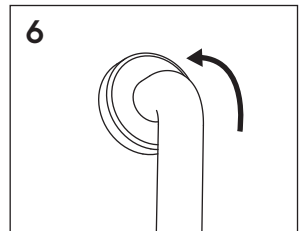
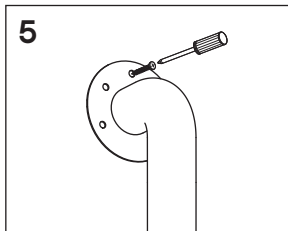
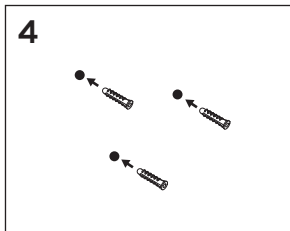
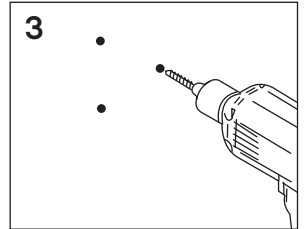
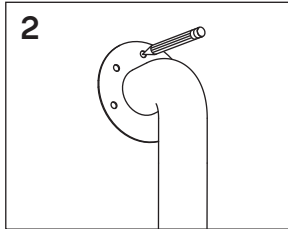
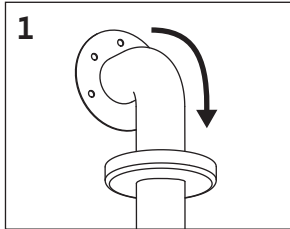
INSTALLATION GUIDE ABS GRAB RAIL

IMPORTANT

- For cavity walls, the grab rail must be fixed to the internal wall stud or a solid framing structure. This may require the grab rail to be installed on an angle to match the gap between the studs.
- The included fixings are for use with solid walls only. It is the installer's responsibility to ensure that the correct fixings are used to suit the wall type.

INSTALLATION

1. Unclip the bracket covers to expose the bracket holes.
2. Place the grab rail in the desired position and mark the holes for drilling.
3. Using an appropriate drill bit (i.e. masonry bit for tiles), drill holes to suit the wall plugs.
4. Insert wall plugs.
5. Line up the grab rail with the drilled holes and install the screws.
6. Push the bracket covers onto the brackets until they clip into place.



GLOW-IN-THE-DARK MODELS

To achieve sufficient luminance, the grab rail must be exposed to ultra violet light, such as the sun or a fluorescent light source.

CARE AND MAINTENANCE

- Clean with a soft cloth and warm soapy water.
- Do not use harsh detergents, corrosive chemicals, or abrasive cleaners.