

# Natural Gas (NG) Conversion Kit Instructions

## M100-21

### Conversion Kit includes:

1 x NG Regulator  
 1 x Inlet Hose Set  
 1 x Outlet Hose Set  
 Type A injector sets  
 Type B injector sets  
 1 x NG Label

### Type B injector set includes:

6 x 1.67mm Main Burner Injectors  
 1 x 1.5mm Side Burner Injector  
 1 x 2.0mm Side Burner Injector  
 1 x 1.35mm Rear Burner Injector  
 1 x 2.04mm Sear Burner Injector

### Type A injector set includes:

6 x 1.67mm Main Burner Injectors  
 1 x 1.5mm Side Burner Injector  
 1 x 2.0mm Side Burner Injector  
 1 x 1.35mm Rear Burner Injector  
 1 x 2.04mm Sear Burner Injector  
 6 x 0.7mm Flame Thrower Injectors

### Type C injector set includes:

6 x 1.69mm Main Burner Injectors  
 1 x 2.08mm Side Burner Injector  
 1 x 1.35mm Rear Burner Injector  
 1 x M6x16mm Bolt

Matador 900 Series NG Injector Size - Type A Injector Set					
	Main Burner	Side Burner	Rear Burner	Sear Burner	Flame Thrower
ARTISTE	1.67mm	1.5mm	N/A	N/A	0.7mm
BOSS	1.67mm	2.0mm	1.35mm	N/A	N/A
TITAN	1.67mm	2.0mm	1.35mm	2.04mm	N/A

Matador 900 Series NG Injector Size - Type B Injector Set				
	Main Burner	Side Burner	Rear Burner	Sear Burner
ARTISTE	1.67mm	1.5mm	N/A	N/A
BOSS	1.67mm	2.0mm	1.35mm	N/A
TITAN	1.67mm	2.0mm	1.35mm	2.04mm
TITAN II Kitchen	1.67mm	N/A	1.67mm	2.04mm
CONQUEST	1.67mm	1.5mm	N/A	N/A

Matador EDGE Series NG Injector Size - Type C Injector Set				
	Main Burner	Side Burner	Rear Burner	Sear Burner
EDGE	1.69mm	2.08mm	1.35mm	N/A

**Caution:** The Natural gas conversion must be carried out by a licenced gas fitter.

## For Matador 900 Series BBQ And TITAN II Kitchen

### Removing and Replacing Gas Injectors for Main Burner and Sear Burner

- Turn off the gas supply valve on the gas cylinder. Ensure that all gas controls on the barbecues are in the OFF position.
  - Disconnect the hose and regulator from the gas cylinder and disconnect the gas hose from the barbecue gas inlet using a 19mm open-ended spanner/wrench.
  - Remove all hotplates, grills and V shape flame tamer from the barbecue.
  - Unscrew the bolts that hold each burner in place and remove all burners from the barbecue. This needs to be done at the rear of the BBQ.
  - Unscrew the bolts around the fascia and remove the fascia. The gas valves are located behind fascia.
  - Remove each gas injector from the end of each valve body using a 7mm socket spanner/ wrench turning gently in an anti-clockwise direction. Before removing the LPG injector, use a firelighter to heat up the injector for a minute to soften the sealant. The injector can then be easily unscrewed with a spanner and avoid damaging the gas valve. Do not block the orifice at the end of the valve where the gas injector is fitted, and do not remove any of the thread sealing compound from the orifice where the injector is located.

\* Check the identification mark stamped on the hex head of the injector to confirm that it is the correct size before proceed to fit it to the valve.

\* When fitting the NG gas injectors to the end of the valve body be sure to seat the injector correctly on the thread before turning it in a clockwise direction. Turn until it is seated firmly in place, but do not over tighten.

#### b. Replace the Fascia into Position in the Barbecue

Now replace the fascia into position on the barbecue, and screw the bolts of both sides of the fascia.

#### c. Connecting the Natural Gas Hose and Regulator

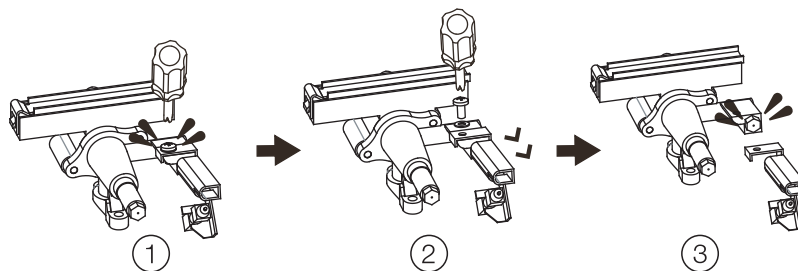
Connect the natural gas hose and regulator to the gas inlet on the barbecue using a 19mm spanner/wrench. Tighten firmly but do not over tighten.

#### d. Replace All Burners into Position in the Barbecue

Screw the bolts that hold each burner in position. Replace hotplates, grills and V shape flame tamer. Now check the operation of each burner.

#### Flame Thrower Injector Replacement for Matador Artiste BBQ (this procedure is not required for Type B injector)

\*Note: For the Matador 900 Series Artiste BBQ range, you need to replace the 0.7mm flame thrower injector for NG conversion. Refer to the diagrams that follow and the procedure below for the replacement instructions.



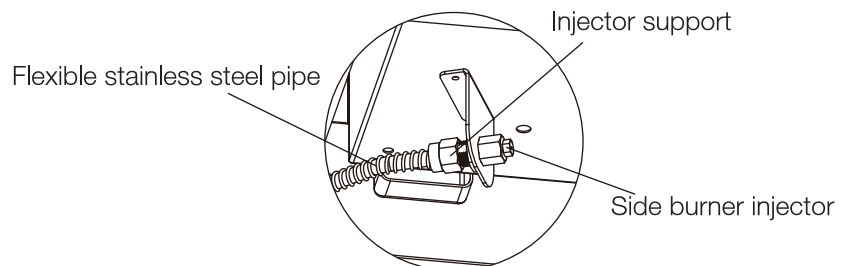
Step 1: Unscrew the bolt as shown on diagram 1 and diagram 2 above;

Step 2: Remove the flame thrower bracket as shown on diagram 3 above to replace the flame thrower injector.

#### Removing and Replacing Gas Injectors for Side Burner

The side burner injector is located on the injector support, and connects to the side burner gas valve through a flexible stainless steel pipe. Follow the procedure below to replace the side burner injector.

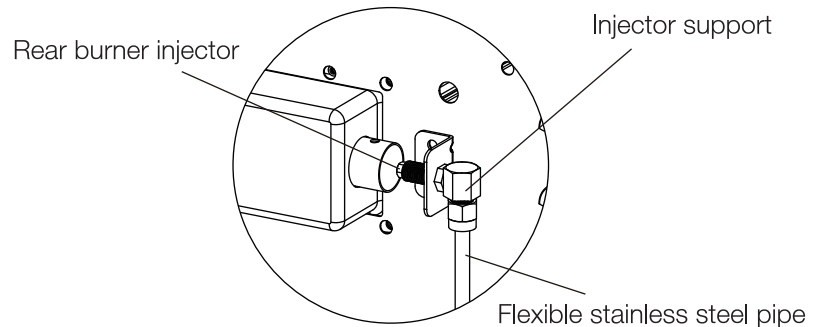
1. Turn off the gas supply valve on the gas cylinder. Ensure that all gas controls on the barbecue are in the OFF position.
2. Disconnect the hose and regulator from the gas cylinder and disconnect the gas hose from the barbecue gas inlet using a 19mm open-ended spanner/wrench.
3. Remove side burner injector from the injector support using a 7mm socket spanner / wrench turning gently in an ant-clockwise direction. Before removing the LPG injector, use a firelighter to heat up the injector for a minute to soften the sealant. The injector can then be easily unscrewed with a spanner and avoid damaging the gas valve. Be careful not to block the orifice where the gas injector is fitted and do not remove any of the thread sealing compound from the orifice where the injector is located.
4. Check the identification mark stamped on the hex head of the injector to confirm that it is the correct size before proceeding to fit it into the injector support. When fitting the NG gas injector to the injector support, be sure to seat the injector correctly on the thread before turning it in a clockwise direction until it is seated firmly in place. Do not over tighten.



#### Removing and Replacing Gas Injectors for Rear Burner

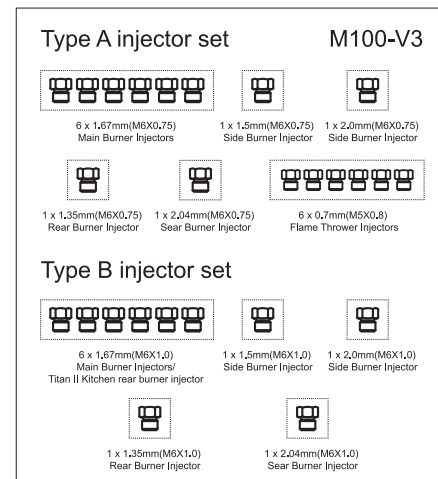
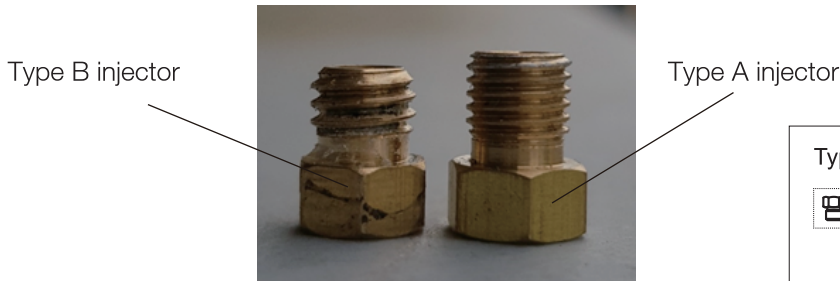
The rear burner injector is located on the injector support and connects to the rear burner gas valve through a flexible stainless steel pipe. Please follow the procedure below to replace the rear burner injector.

1. Turn off the gas supply valve on the gas cylinder. Ensure that all gas controls on the barbecue are in the off position .
2. Disconnect the hose and regulator from the gas cylinder and disconnect the gas hose from the barbecue gas inlet using a 19mm open-ended spanner/wrench .
3. Remove the rear burner cover in the back of the inner hood.
4. Remove rear burner iniector from the iniector support using a 7mm socket spanner/wrench turning gently in an anti-clockwise direction. Before removing the LPG injector, use a firelighter to heat up the injector for a minute to soften the sealant. The injector can then be easily unscrewed with a spanner and avoid damaging the gas valve. Be careful not to block the orifice where the gas injector is fitted and do not remove any of the thread sealing compound from the orifice where the injector is located.
5. Check the identification mark stamped on the hex head of the injector to confirm that it is the correct size before proceeding to fit it into the injector support. When fitting the NG gas injector to the injector support, be sure to seat the injector correctly on the thread before turning it in a clockwise direction until it is seated firmly in place . Do not over tighten.



### About Type A and Type B injector sets

The injectors sets are packed in the blister pack as shown on the right diagram below, the thread of the Type A and Type B injector is different, see left diagram below, you can tell easily by visual.



### Type A injector set is suitable for the models below:

**Titan:** B279-15P-D, B279-16D, B309-15P-D, B309-16D, B325-D, B279-17, B279-17P, B309-17, B309-17P, B325-17

**Boss:** B277-15D, B278-15P-D, B283-15D, B284-15D, B287-15P-D, B277-17B, B326-C-D, B278-17P, B283-17B, B284-17B, B287-17P, B326-17

**Artiste:** B313-ED, B315-ED, B323-1D, B313-17, B315-17, B323-17

## **Type B injector set is suitable for the models below:**

**Titan:** B279-17P18, B279-1718, B309-17P18, B309-1718, B325-1718

**Boss:** B277-17B18, B278-17P18, B283-17B18, B284-17B18, B287-17P18, B326-1718

**Artiste:** B313-1718, B315-1718, B323-1718

How to find the model codes of the BBQ you purchase:

There is a red product code sticker (see image below, use the 2018 Titan 4B as the example) on the product, you can find the model code from there.



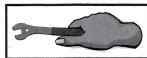
**Note:** If the model you purchase is not listed above (except EDGE series BBQ) , please use the Type B injector for your Natural Gas conversion.

## **For Matador EDGE Series BBQ (Using Tupe C Injector Pack)**

### **ASSEMBLY INSTRUCTION**

Symbol: The following symbols will be shown in each procedure for indication of tightening the bolt and nut if necessary.

Tighten with tools at this stage:

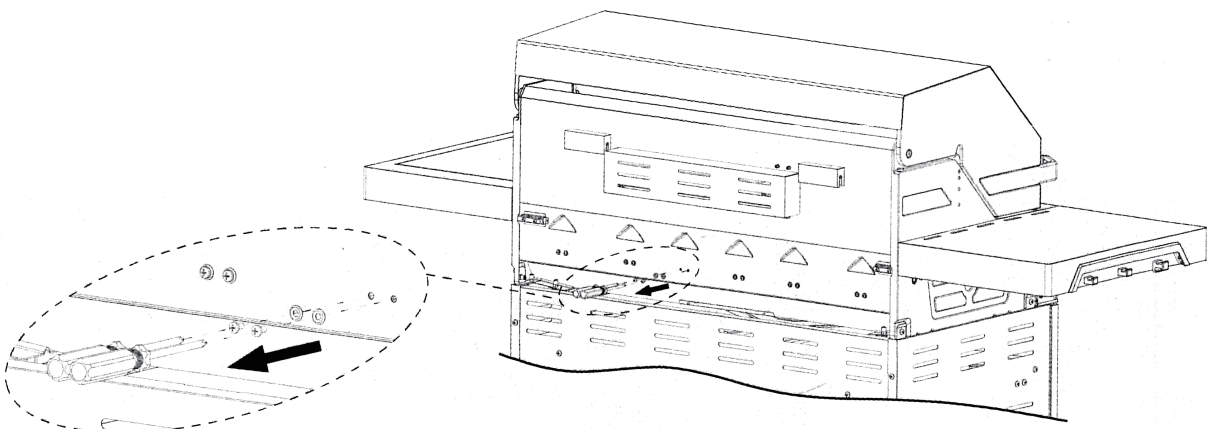
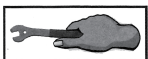


Pay attention at this stage:



### **1 . MAIN BURNER INJECTOR REPLACEMENT**

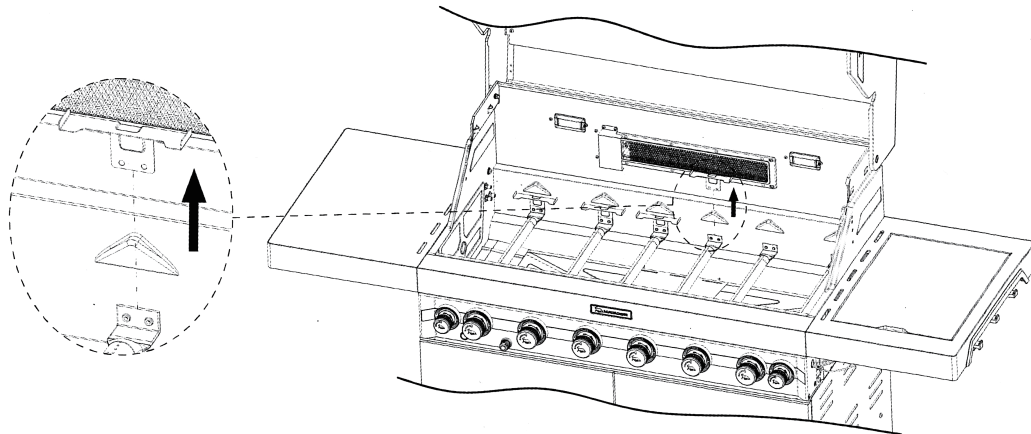
- 1.1 To remove and replace gas injectors for the main burners, disconnect the gas supply. Ensure that all gas control knobs on the barbecue are in the OFF position
- 1.2 Disconnect the gas hose from the barbecue gas inlet. Use spanner / wrench if required
- 1.3 Using the grate lifter, carefully remove all grill grates and hotplates from the barbecue
- 1.4 Remove all flame tamers and put these aside
- 1.5 Undo the two screws securing each burner to the back of the fire box



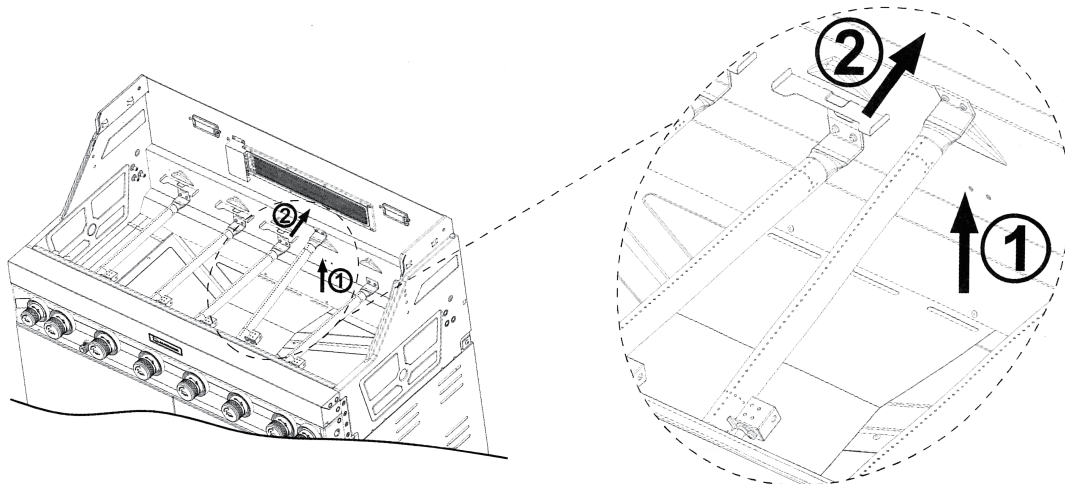


## ASSEMBLY INSTRUCTIONS

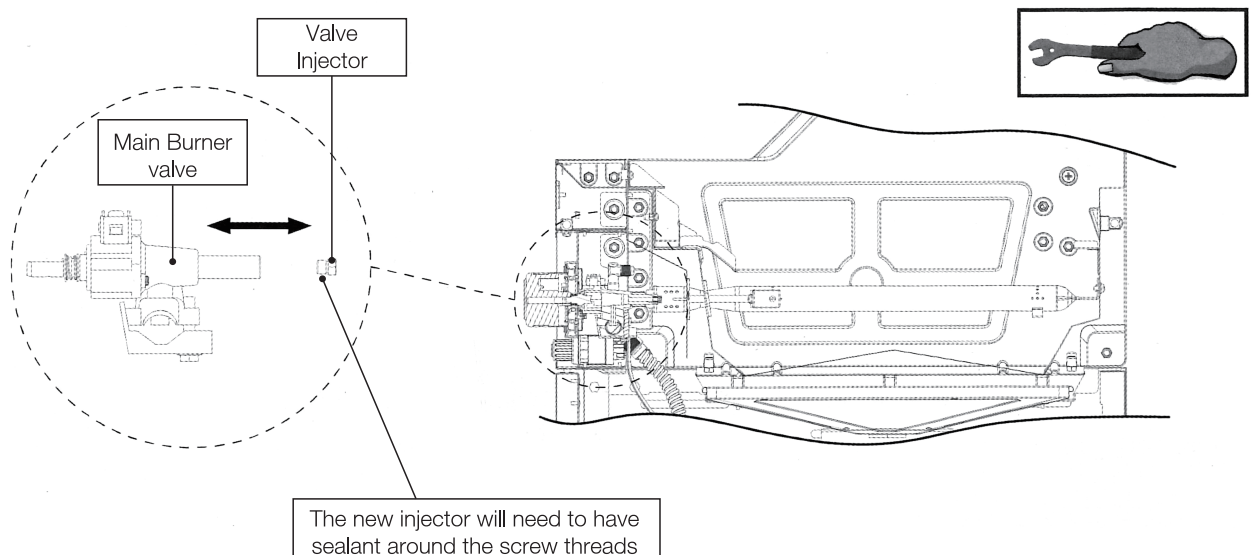
1.6 Remove flame tamer support brackets by sliding out the bracket between the back of each burner and the firebox



1.7 To remove burners from firebox , lift the burner ( on an angle ) off the burner valve assembly and then out from the firebox

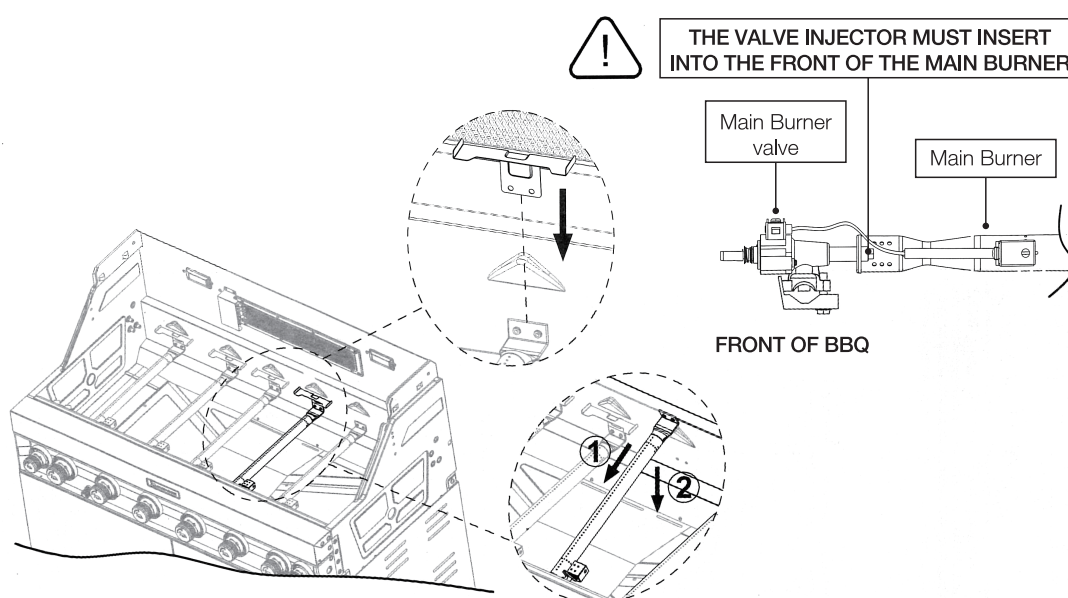


1.8 To disconnect the ignition needle from the burner , undo the screw connecting the ignition needle to the burner to fully remove each burner from the firebox



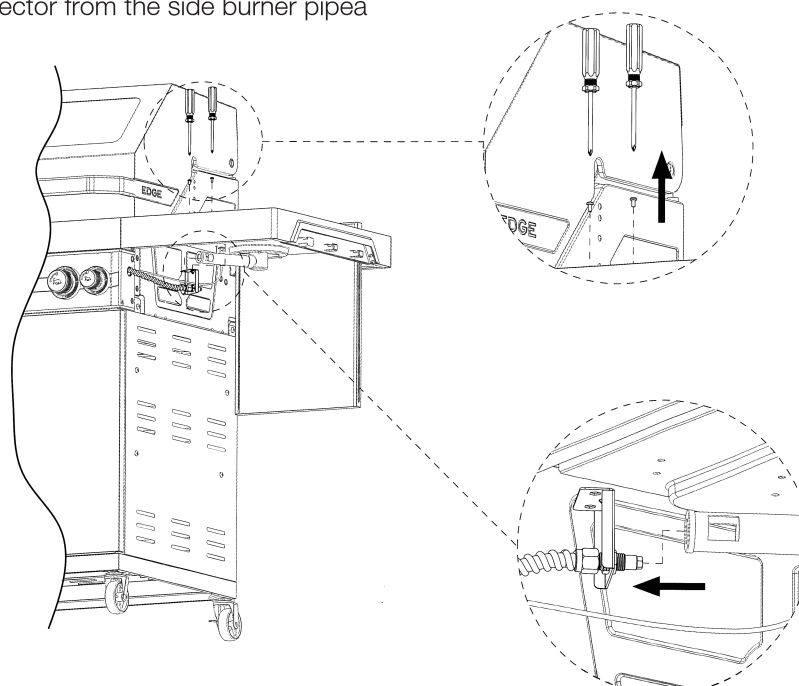
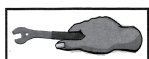
## ASSEMBLY INSTRUCTIONS

- 1.9 To replace the main burner injectors, remove each gas injector from the end of each valve body using a 7mm socket spanner / wrench turning gently in an anti-clockwise direction. Before removing the LPG injector, use a firelighter to heat up the injector for a minute to soften the sealant. The injector can then be easily unscrewed with a spanner and avoid damaging the gas valve. Do not block the orifice at the end of the valve where the gas injector is fitted, and do not remove any of the thread sealing compound from the orifice where the injector is located.
- 1.10 Add sealant around the screw threads for the new injector before fitting to the valve. DO NOT block injector hole with sealant
- 1.11 Check the identification mark stamped on the hex head of the injector to confirm that it is the correct size for the main burner before installation. The injector size is stamped on the side of each injector
- 1.12 When fitting the NG gas injector to the end of the valve body be sure to seat the injector correctly onto the thread before turning it in a clockwise direction. Turn until it is secure. DO NOT over tighten
- 1.13 Re-attach ignition needle back onto each burner
- 1.14 Install burner back into the barbecue and secure with the bracket and screws at the back of the firebox. Ensure burner is correctly aligned with the injector
- 1.15 Replace all flame tamers, grill plates and hotplate back onto the barbecue



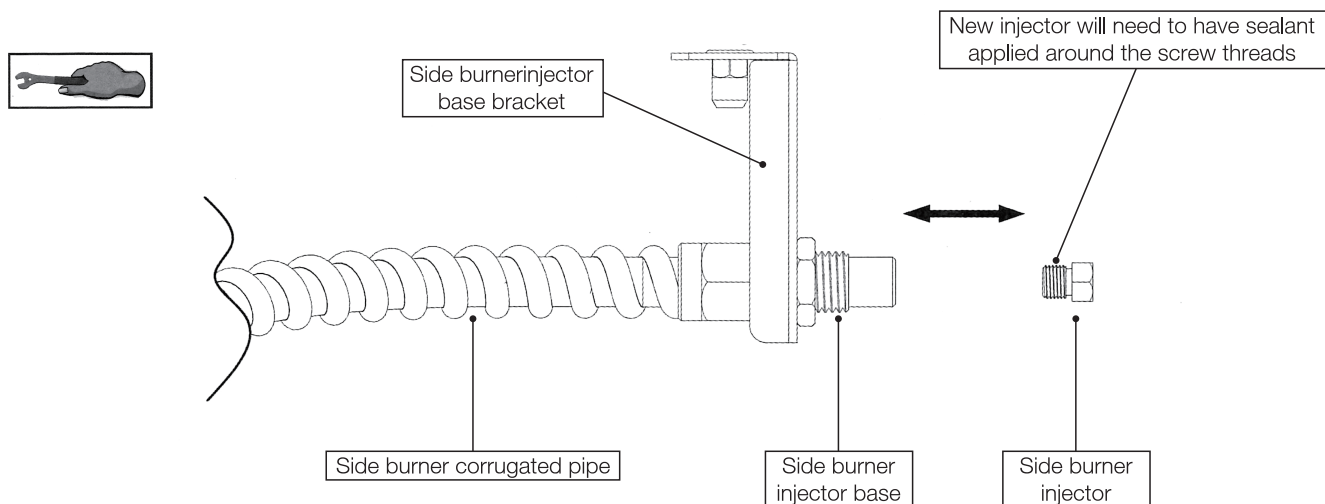
## 2. SIDE BURNER INJECTOR REPLACEMENT

- 2.1 Ensure the gas supply is disconnected and all control knobs on the barbecue are in the OFF position, and regulator assembly is still disconnected from the barbecue gas inlet
- 2.2 Unscrew the side burner base support bracket
- 2.3 Remove side burner injector from the side burner pipe

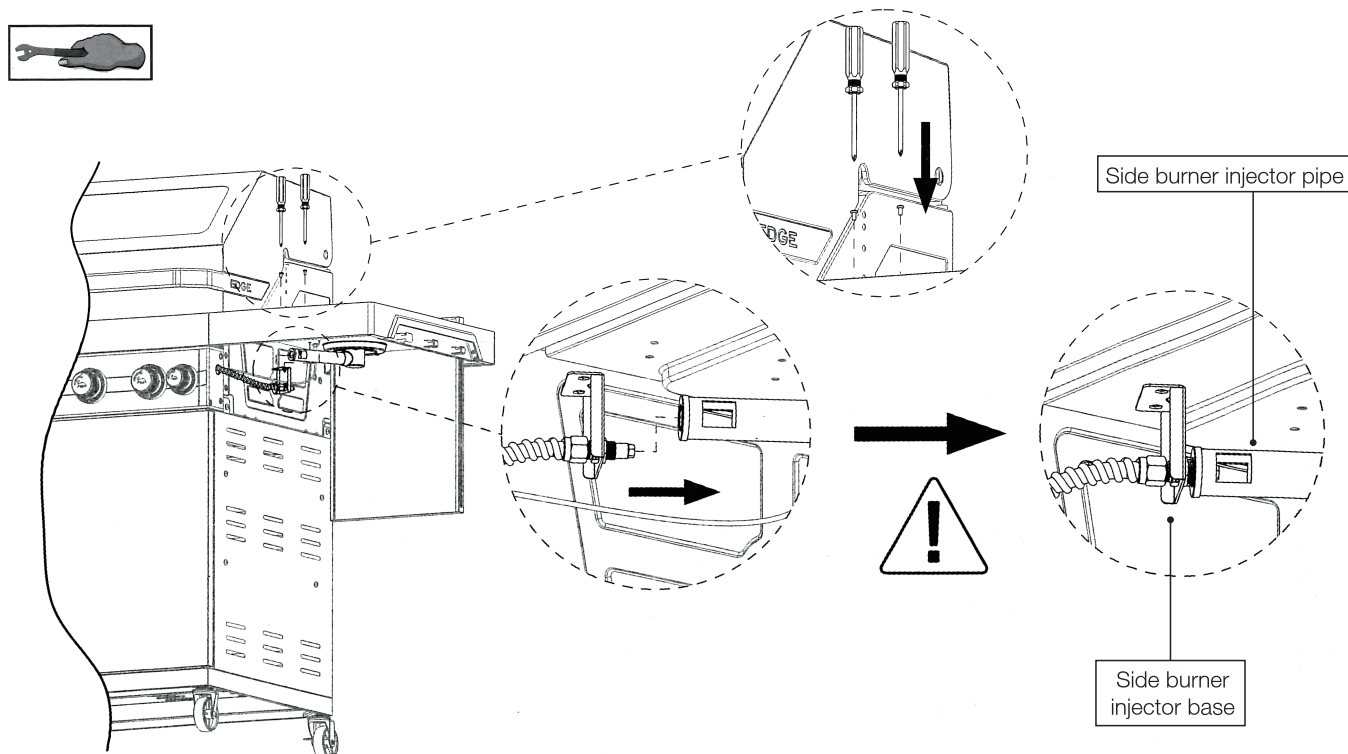


## ASSEMBLY INSTRUCTIONS

- 2.4 To replace the Side Burner Injector, remove side burner injector from the injector base using a 7mm socket spanner / wrench turning gently in an anti-clockwise direction. Before removing the LPG injector, use a firelighter to heat up the injector for a minute to soften the sealant. The injector can then be easily unscrewed with a spanner and avoid damaging the gas valve. Be careful not to block the orifice where the gas injector is fitted and do not remove any of the thread sealing compound from the orifice where the injector is located.
- 2.5 Add sealant around the screw threads for the new injector before fitting to the injector base.  
DO NOT block injector hole with sealant
- 2.6 Check the identification mark stamped on the hex head of the injector to confirm that it is the correct size for the side burner before installation
- 2.7 When fitting the NG gas injector to the end of the side burner injector base be sure to seat the injector correctly onto the thread before turning it in a clockwise direction . Turn until it is secure  
DO NOT over tighten



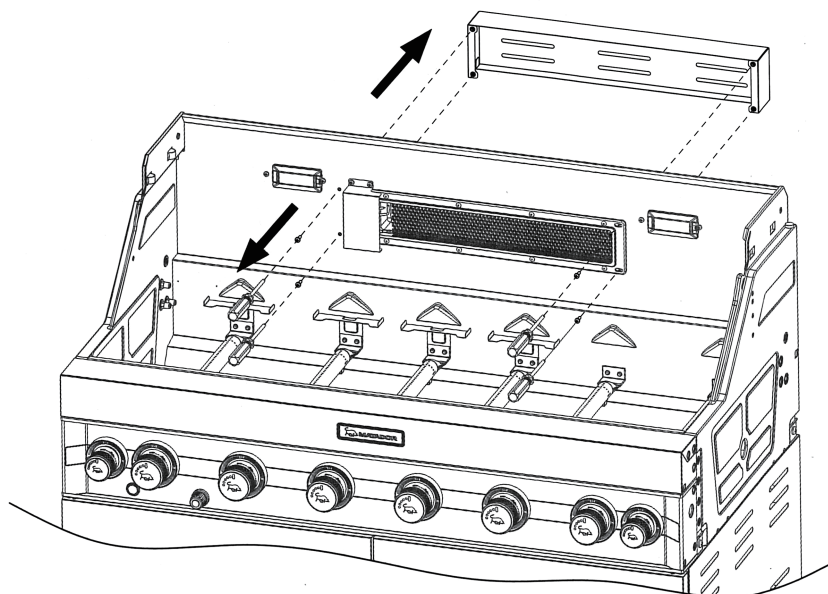
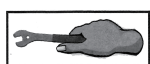
- 2.8 Reattach side burner injector base into the side burner pipe  
**IMPORTANT** - On completion of re-assembly perform a leak test



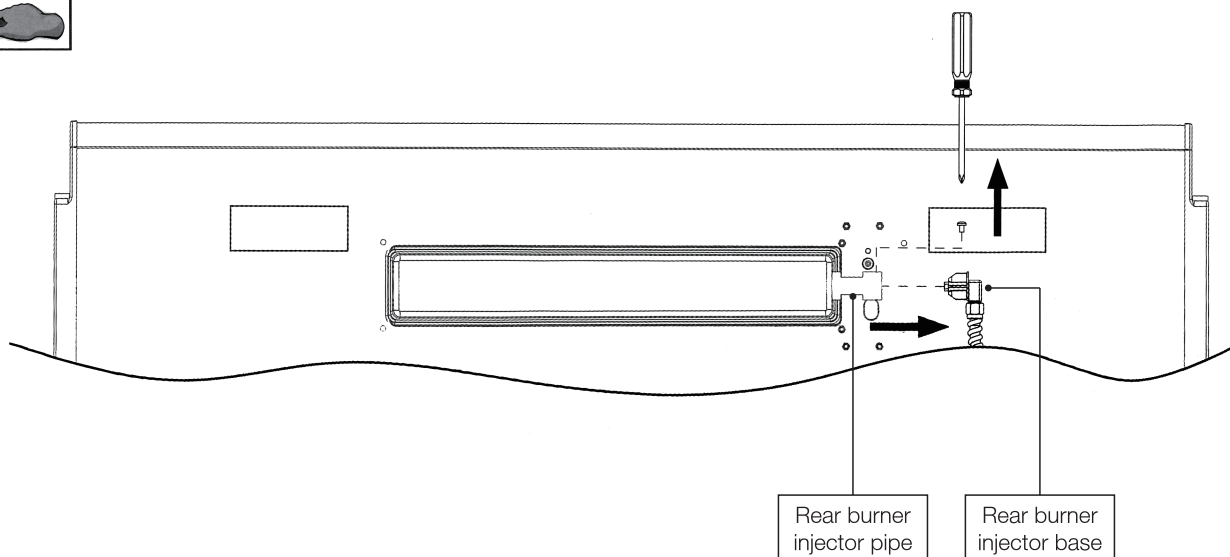
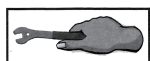
## ASSEMBLY INSTRUCTIONS

### 3. REAR BURNER INJECTOR REPLACEMENT

- 3.1 Ensure the gas supply is disconnected and all control knobs on the barbecue are in the OFF position, and the hose and regulator assembly is disconnected from the barbecue gas inlet
- 3.2 Remove the screws from the the rear burner cover at the back of the firebox



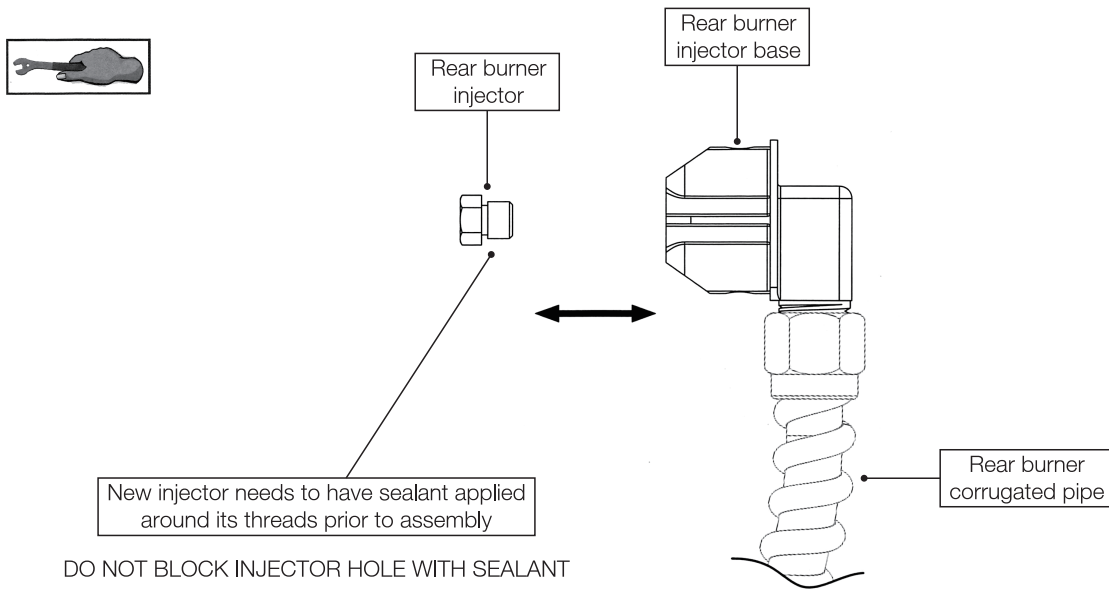
- 3.3 To remove rear burner injector base, disassemble the screws securing the rear burner injector base from the back of the firebox and remove the rear burner injector base



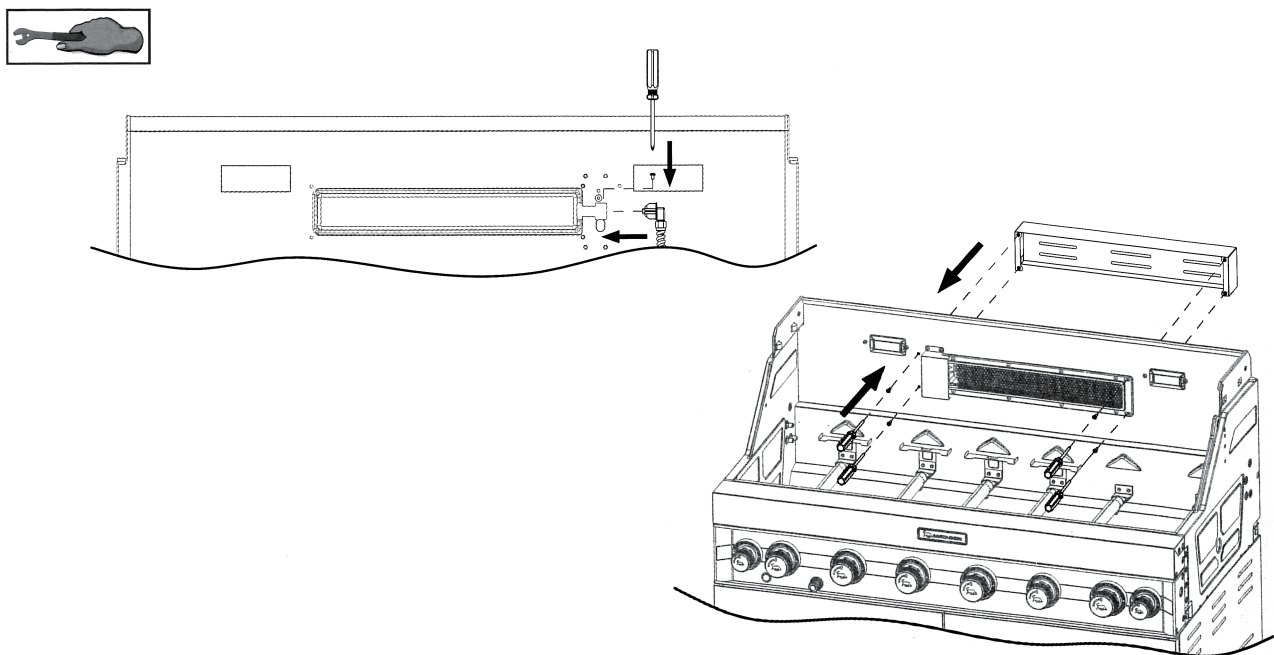
- 3.4 To replace the Rear Burner Injector, remove the gas injector using a 7mm socket spanner / wrench turning gently in an anti-clockwise direction. Before removing the LPG injector, use a firelighter to heat up the injector for a minute to soften the sealant. The injector can then be easily unscrewed with a spanner and avoid damaging the gas valve. Do not block the orifice at the end of the valve where the gas injector is fitted, and do not remove any of the thread sealing compound from the orifice where the injector is located.
- 3.5 Add sealant around the screw threads for the new injector before fitting to the valve.  
DO NOT block injector hole with sealant
- 3.6 Check the identification mark stamped on the hex head of the injector to confirm that it is the correct size for the rear burner before installation

## ASSEMBLY INSTRUCTIONS

3.7 When fitting the NG gas injector to the end of the rear burner injector base be sure to seat the injector correctly onto the thread before turning it in a clockwise direction . Turn until it is secure.  
DO NOT over tighten



3.8 Reattach rear burner cover and secure using the original screws



## 4. CONNECTING NATURAL GAS HOSE AND REGULATOR

Connect the natural gas hose and regulator to the gas inlet on the barbecue. Use a spanner to secure but DO NOT over tighten.





### Change the Gas Label

Peel the natural gas label from backing sheet, placing the new label over the existing LPG gas label. This will indicate that the unit is now configured for natural gas.

### Use the Following Procedure to Check for Gas Leaks:

1. In a small container mix up a solution of water and detergent or soap. Mix the solution well.
2. For NG make sure that the gas line is correctly fitted to the appliance.
3. Make sure that the gas control valves on the appliance are all turned off.
4. Using a brush or spray bottle apply the solution to the gas line and all joins in the gas line.
5. Bubbling of the solution will indicate that there is a leak present.
6. Re-tighten or re-seal any joints that are leaking.
7. If a leak persists then contact your distributor or the manufacturer for assistance.

**\* Never use a naked flame to check for gas leaks.**

\* Refer to the specific manual for your Matador BBQ, make and model, for any other technical information that you require.

### **WARNING**

- All service to the appliance must be undertaken by a qualified gas service agent. Your licenced gas fitter needs to be "endorsed" to carry out gas conversions. A plumber/gas fitter should only take on such work if they are "endorsed".
- Do not smoke or use a naked flame within the vicinity of the appliance or gas line when performing the gas conversion, or service of any kind.
- Always carry out a gas leak test after any work has been carried out on the appliance.
- If your barbecue is fitted with an optional side burner, the gas conversion must be carried out at the same time.
- Always use the correct size socket spanner/wrench to remove or replace the gas injectors. Do not use pliers or any other type of tool that may squeeze the head of the gas injector. This may cause the gas orifice to change its shape, thereby adversely affecting the gas flow to each burner.
- Gas injectors are made of brass and have a fine thread which must be treated with care when handled.
- Remove and replace injectors with care.

#### For Your Safety

If you smell gas, follow this procedure:

1. Shut off all gas to the appliance.
2. Extinguish any open flame(s).
3. Open the lid of appliance.
4. If odour continues, immediately call your gas supplier or your fire department.

#### Important

1. Do not store or use gasoline or other flammable vapours or liquids in the vicinity of this, or any other appliance.
2. An LPG cylinder that is not connected for use shall not be stored in the vicinity of this, or any other appliance.

### PRODUCT WARRANTY

Thank you for purchasing one of our quality Matador products.

Please keep your receipt as proof of purchase, as this will authenticate your warranty. Any claim under this warranty must be made within 5 YEARS of the date of purchase of the product. To make a claim under the warranty, take the product (with proof of purchase) to any Bunnings store (see [www.bunnings.com.au](http://www.bunnings.com.au) or [www.bunnings.co.nz](http://www.bunnings.co.nz) for store locations) or contact Adeval Group Pty Ltd. Adeval Group Pty Ltd bears reasonable, direct expenses of claiming under the warranty. You may submit details and proof to Adeval Group Pty Ltd for consideration. The warranty covers manufacturer defects in materials, workmanship and finish under normal use. This warranty is provided in addition to other rights and remedies you may have under law: our goods come with guarantees which cannot be excluded under the Australian Consumer Law or Consumer guarantees Act 1993. You are entitled to replacement or refund for a major failure and to compensation for other reasonably foreseeable loss or damage.

You are also entitled to have the goods repaired or replaced if the goods fail to be of acceptable quality and the failure does not amount to a major failure. The warranty excludes damage resulting from product misuse or product neglect. The warranty covers domestic use only and does not apply to commercial applications.

This warranty is given by

#### **Adeval Group Pty Ltd**

276 Proximity Drive, Sunshine West Vic 3020 Australia.

T: 1800 427 841 (Aus) 0800 357 050 (NZ)

E: [info@garth.com.au](mailto:info@garth.com.au)

#### **Garth New Zealand Ltd**

T: 0800 357 050

E: [info@garth.com.au](mailto:info@garth.com.au)