

LUGNA

FORM & FUNCTION

ASSEMBLY INSTRUCTIONS

Cabinet Shell

HEIGHT
1536mm

HEIGHT
2048mm

LUGNA understands the importance of timeless style and practical durability for a home's form and function. Our European-inspired collection is simple and easy to use, with five modern colours that complement any style and space. LUGNA's modular system allows for endless configurations and additions, with various-sized cabinets, drawers, shelving, and hinged doors that can be combined to create a bespoke look on any budget. Whether you're looking for something modern and sleek or classic and elegant, LUGNA has something for everyone.

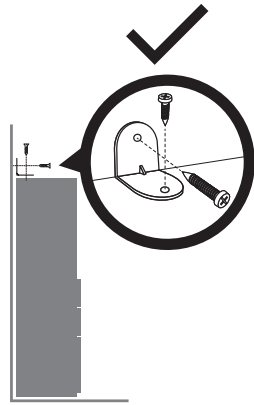


SCAN for
more info

10 YEAR
WARRANTY



⚠ WARNING



Children have died from furniture tipover.

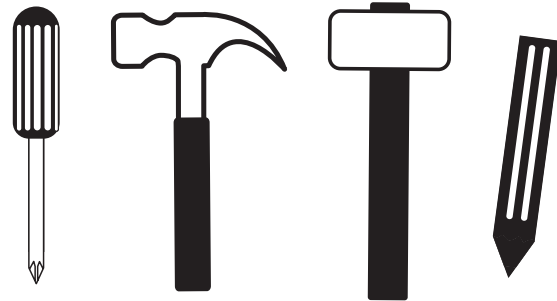
- ALWAYS secure this furniture with an anchor device.
- NEVER allow children to stand, climb or hang on drawers, doors or shelves.
- Never open more than one drawer at a time.
- Place heavy items down low.

NEVER put a TV on this furniture.



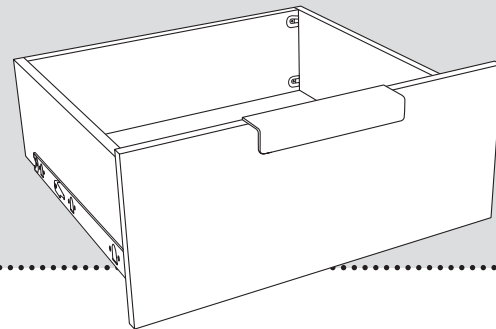
Serious injury or death can be caused by toppling furniture. Attach this unit to the wall using the safety bracket anchor device provided. Fix bracket to the middle of the unit with 16mm screw (provided) and use a suitable wall fixing (not supplied) to fix L-bracket to wall.

What you will need



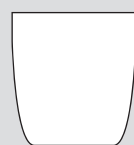
Before Commencing!

Fitting drawers can impact the location of the fixed shelf. Please refer to the insert kit instructions – drawer cabinet slider positions – before commencing!

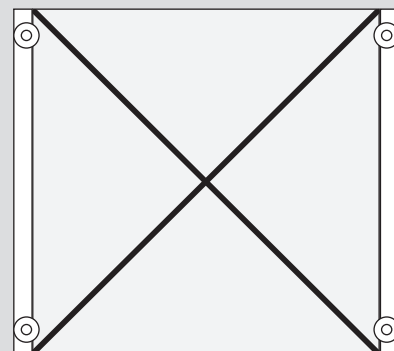


Carpet Floors

When placing the cabinet on carpet, the carpet can prevent the bottom drawers or doors from opening. To fix this, install the optional foot mounts.



4x
Foot Mounts



WARNING!
Do not screw foot mounts to the base. Fix to cabinet sides as shown.

Includes



20x

Cam Lock
Screws



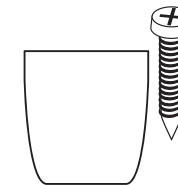
20x

Cam Lock
Nuts



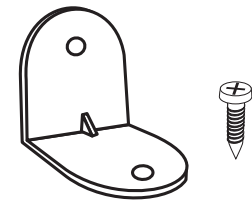
75x

Nails



4x

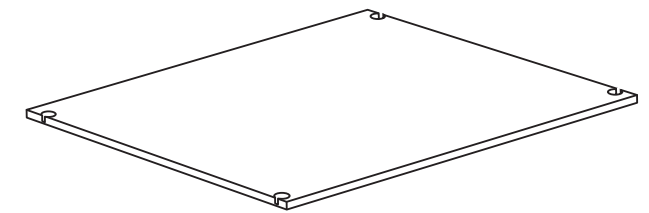
Foot Mounts



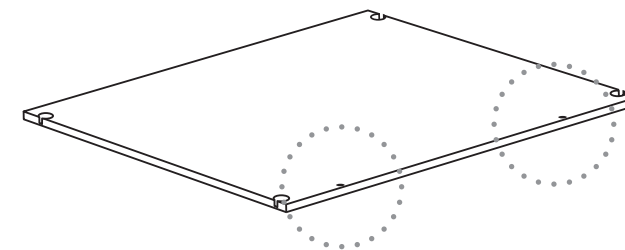
1x

Safety Bracket

1x Fixed Shelf



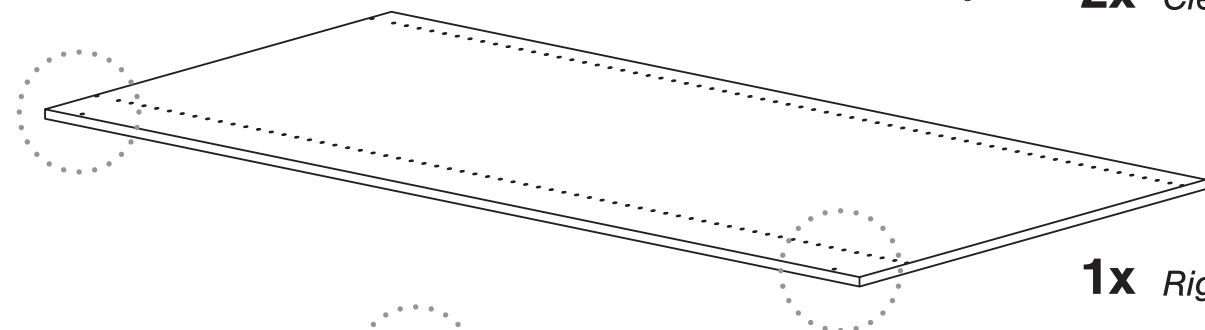
2x Top and Base



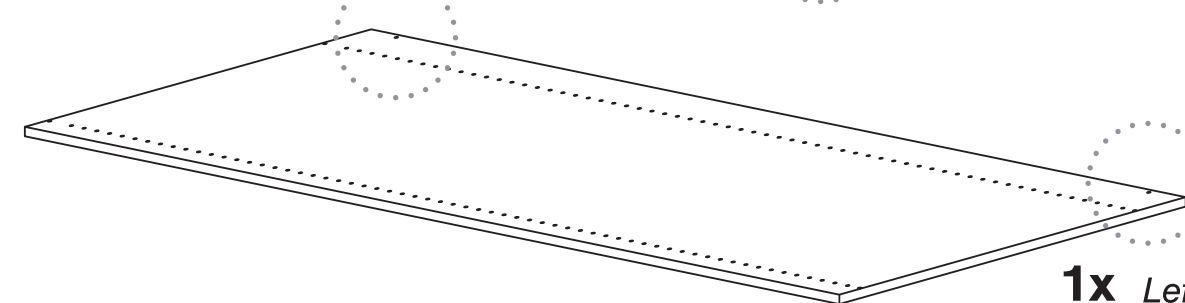
2x Cleats



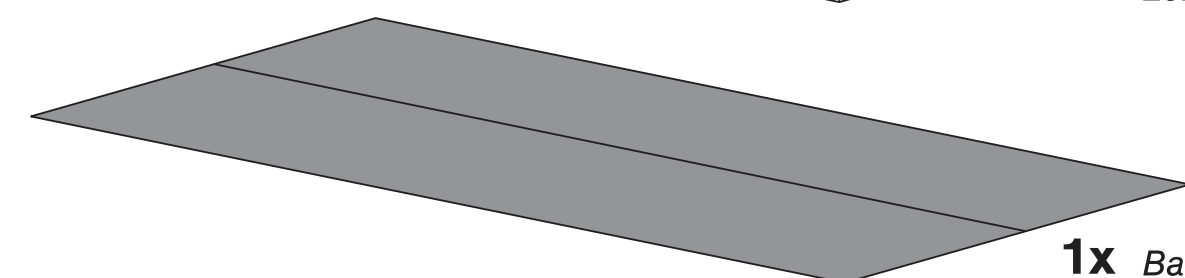
1x Right Side Panel

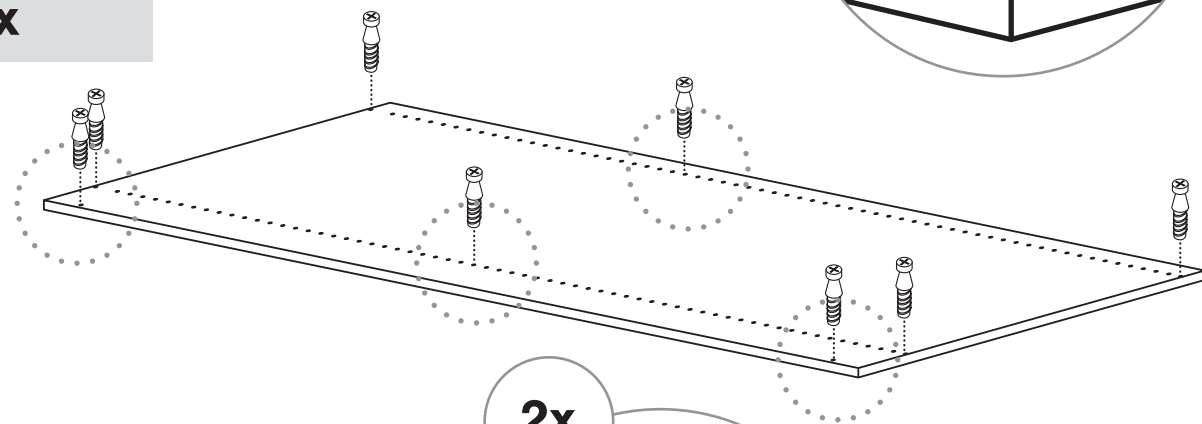
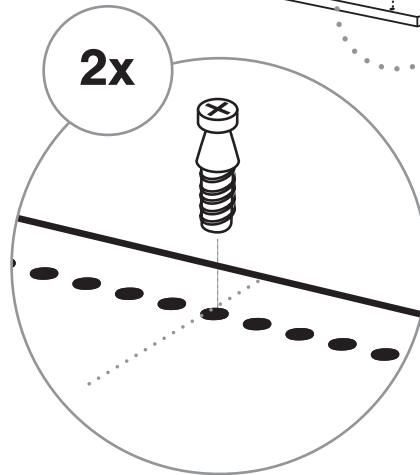


1x Left Side Panel



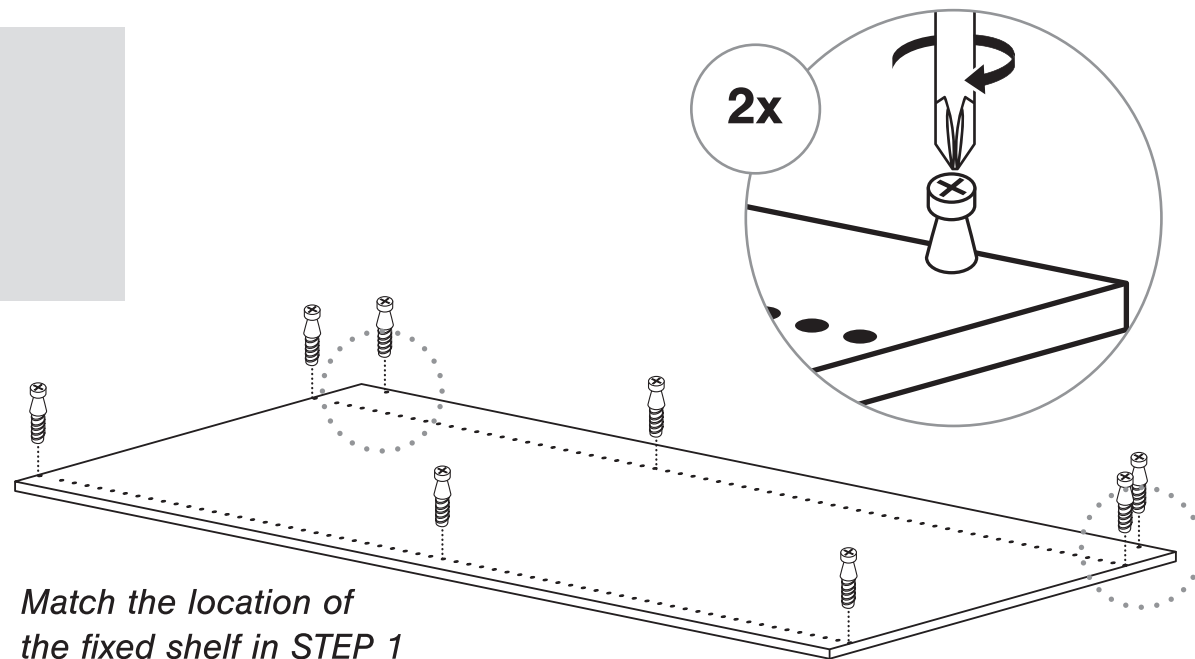
1x Back Panel



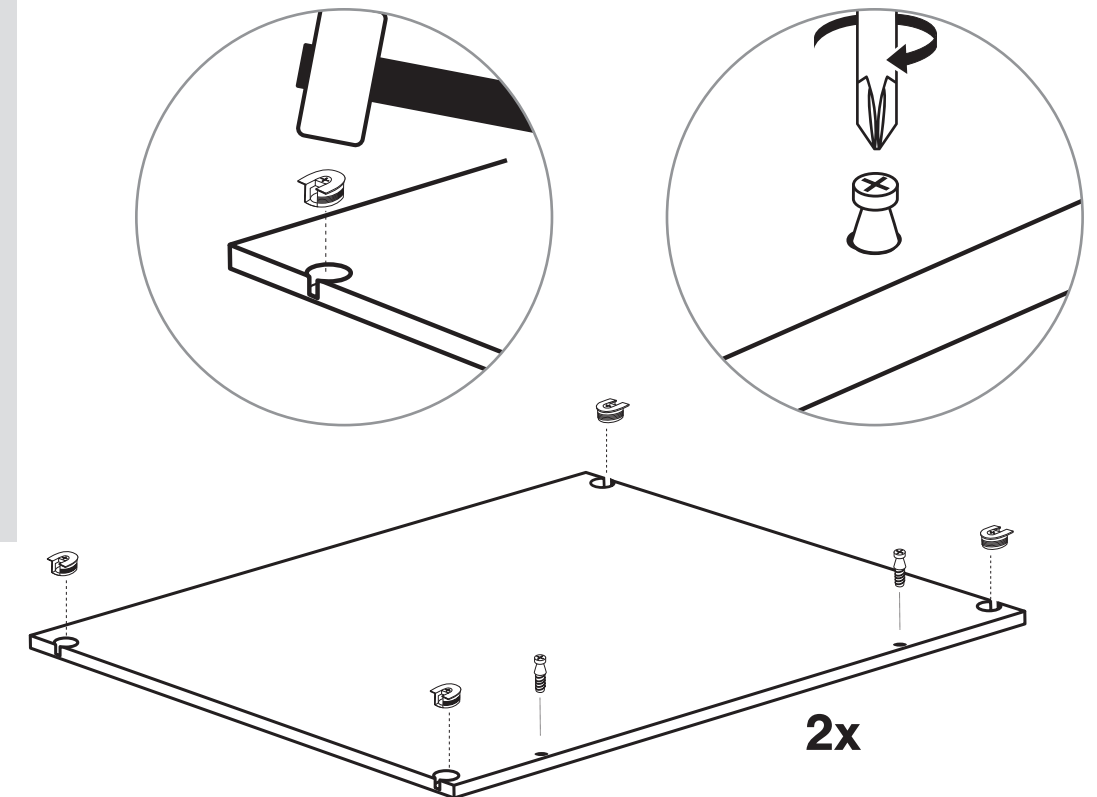
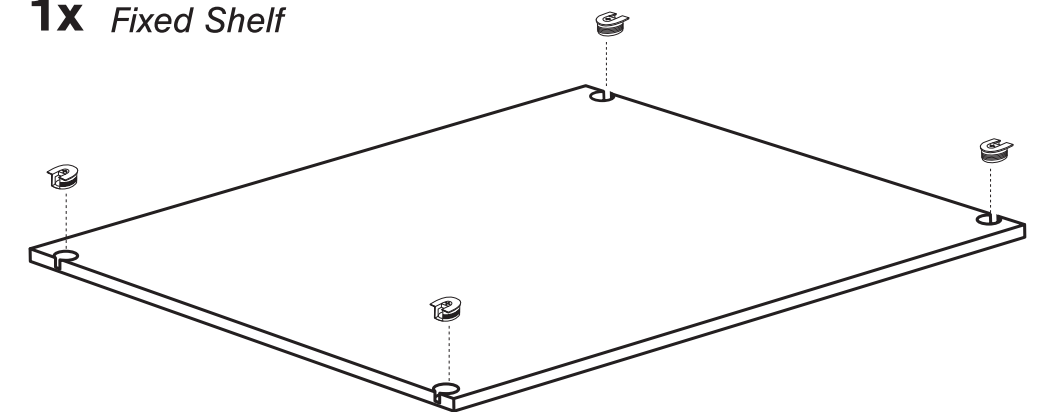
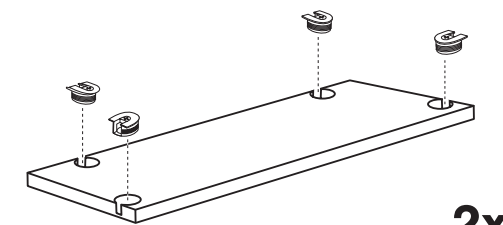
STEP 1**1x** Right Side Panel**8x****2x**

Set the location of the fixed shelf to suit your configuration.

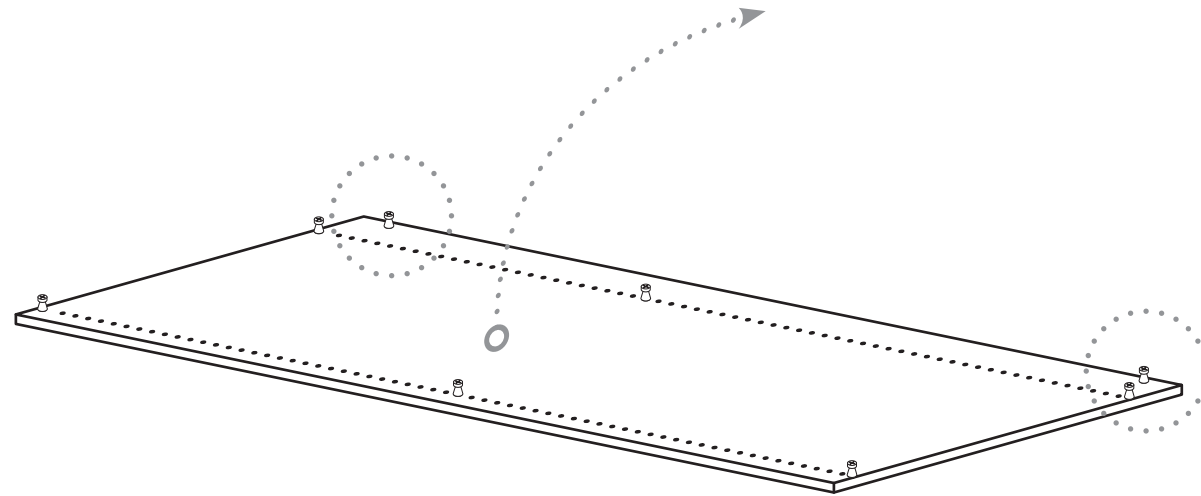
Fitting drawers can impact the location of the fixed shelf. Please refer to the insert kit instructions – drawer cabinet slider positions – before commencing!

STEP 2**1x** Left Side Panel**8x**

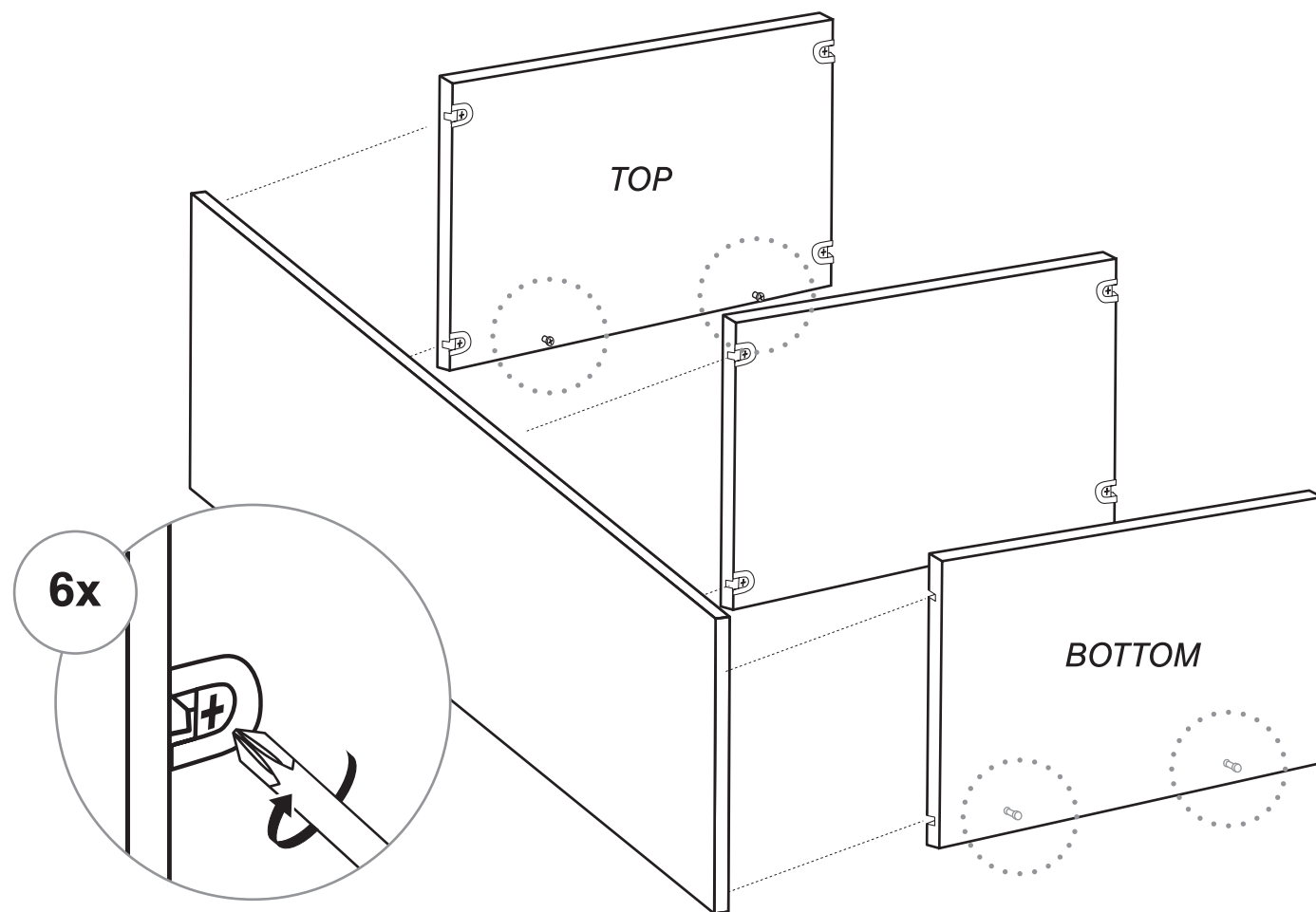
Match the location of the fixed shelf in STEP 1

STEP 3**2x** Top and Base**4x****8x****2x****STEP 4****1x** Fixed Shelf**4x****STEP 5****2x** Cleats**8x****2x**

STEP 6

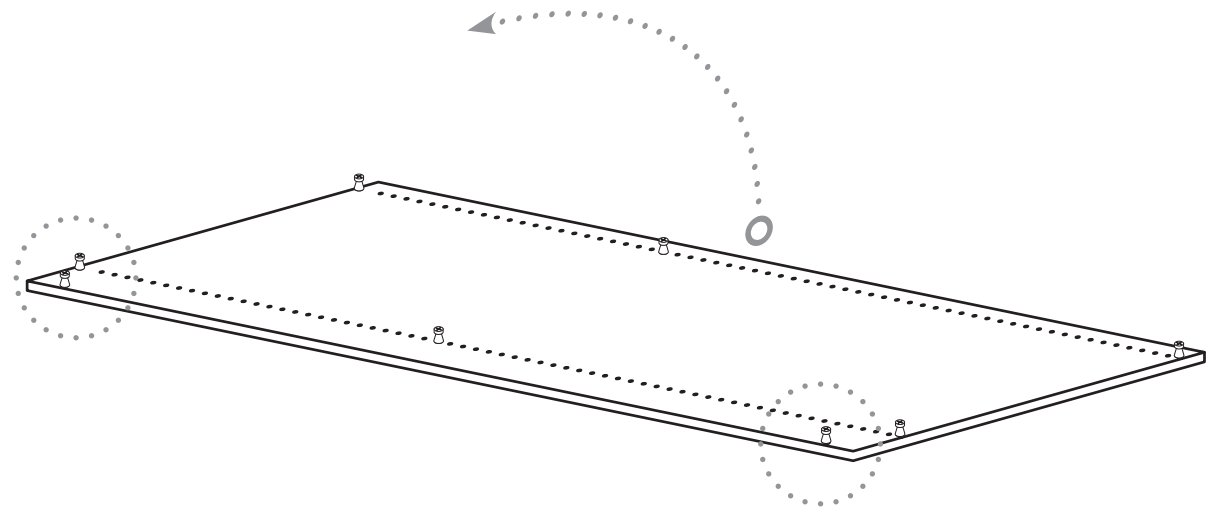


STEP 7

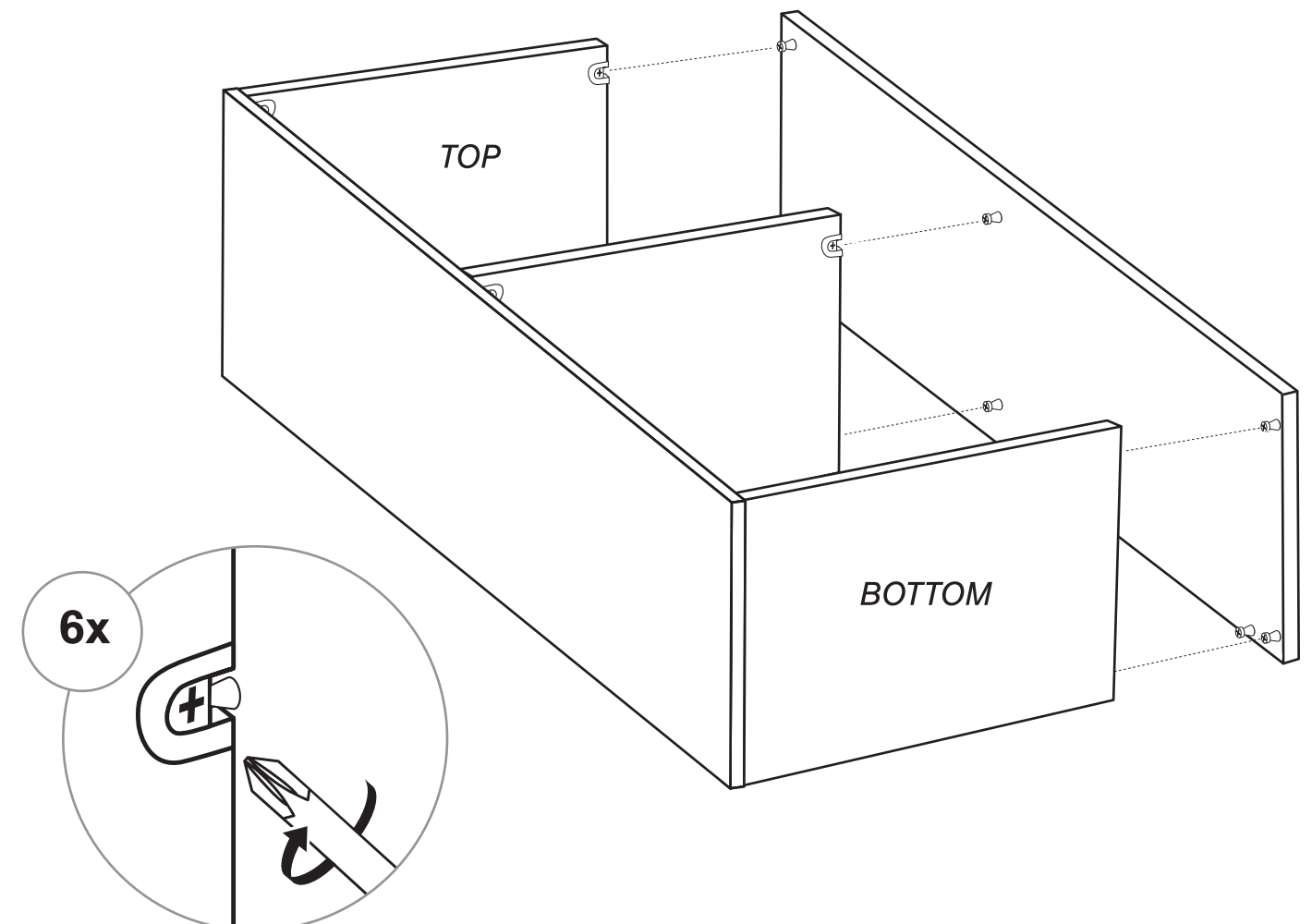


Note – the cam lock screws on the top and bottom panels should point to the inside of the cabinet.

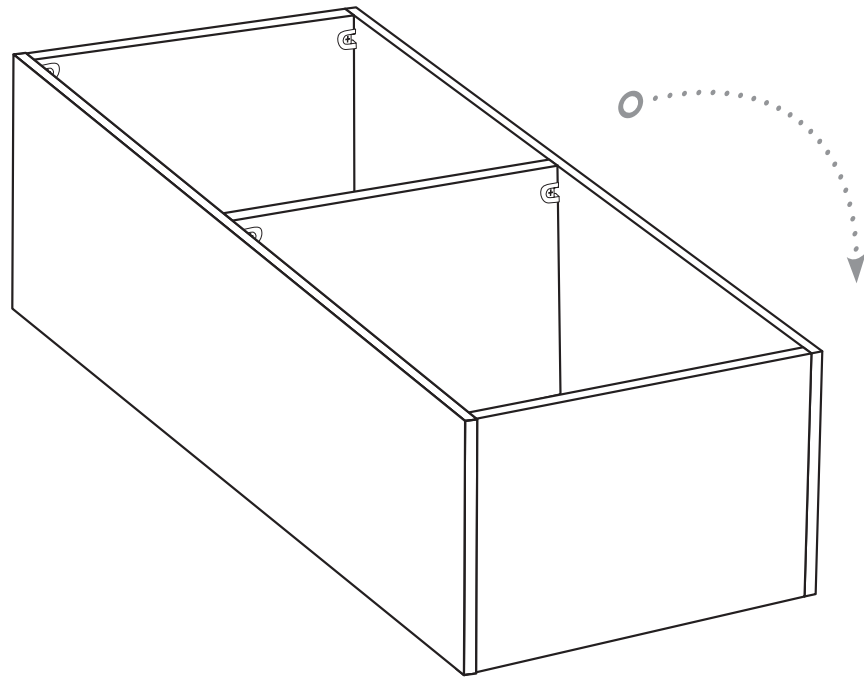
STEP 8



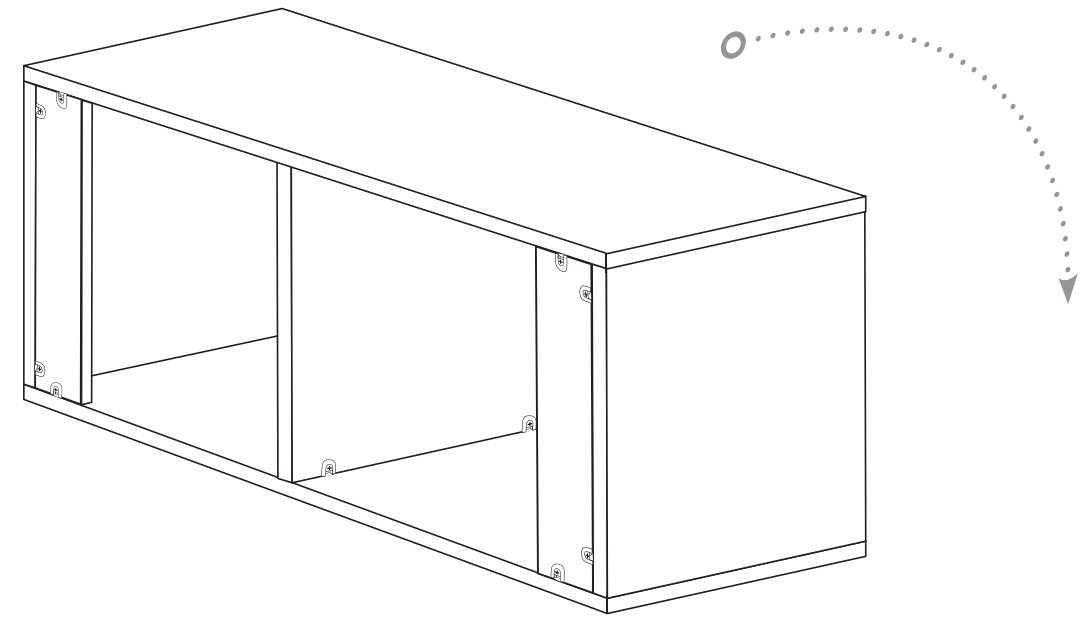
STEP 9



STEP 10

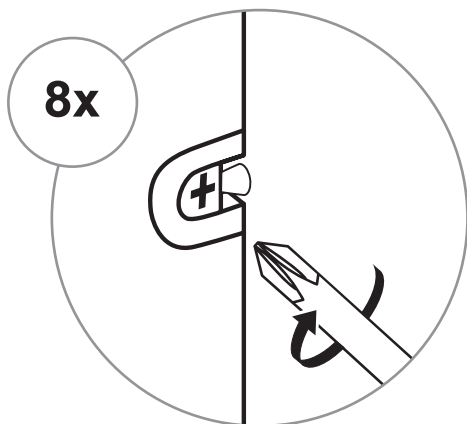
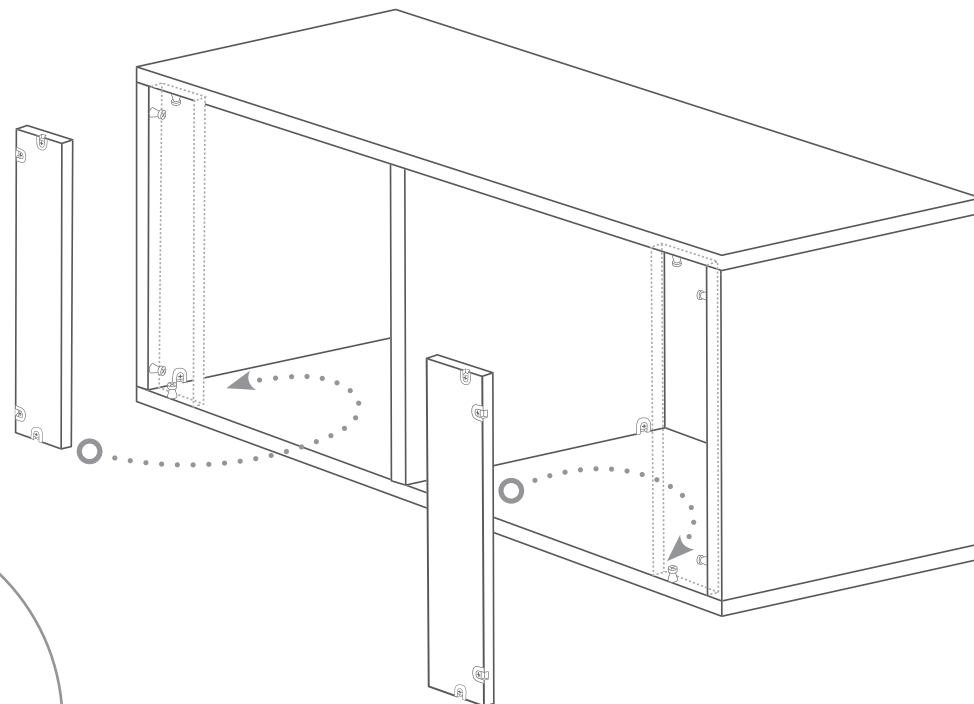


STEP 12



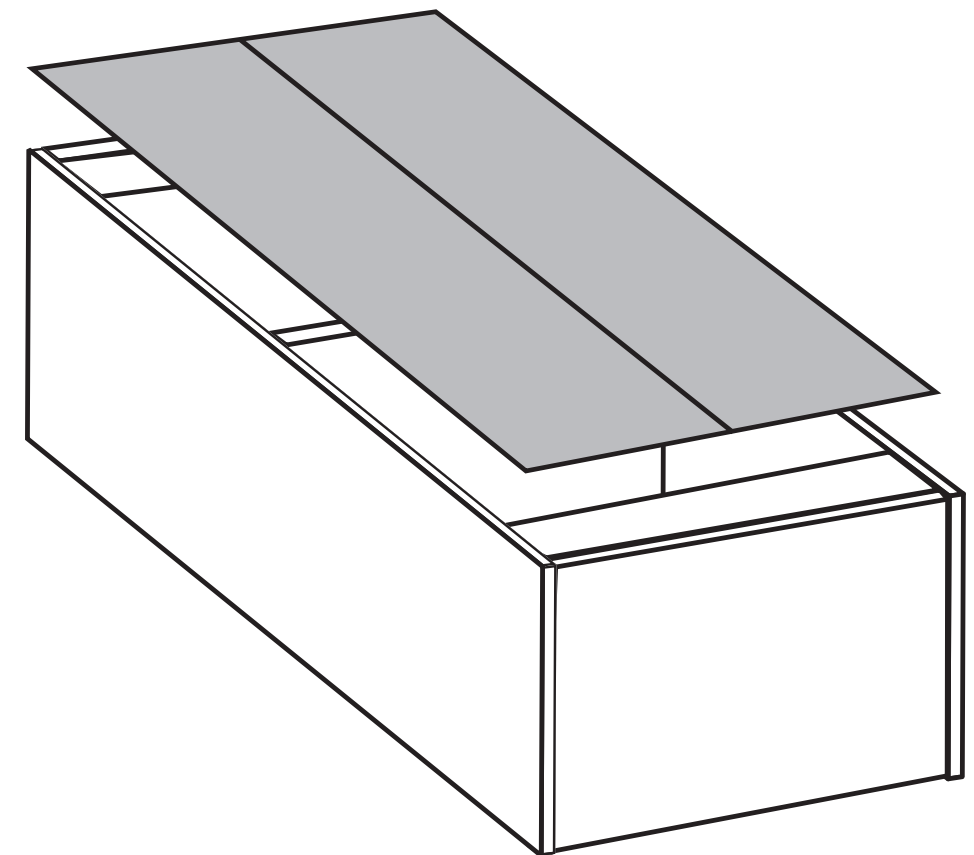
STEP 11

2x Cleats

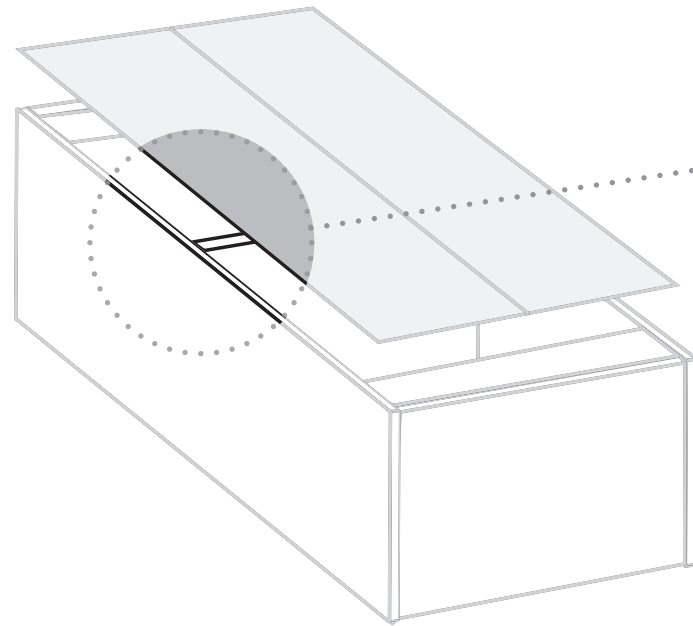


STEP 13

Place backing panel on to the back of the cabinet.



STEP 14

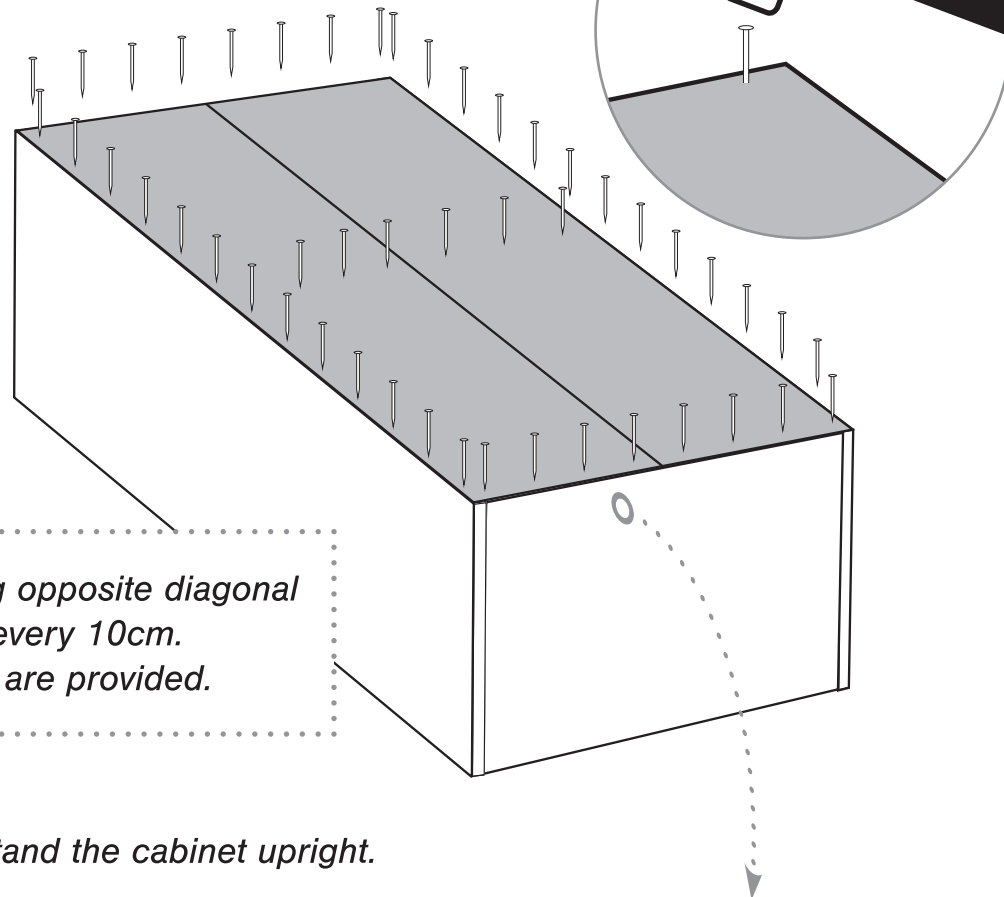


STEP 15



75x

Note – Start by nailing opposite diagonal corners. Space nails every 10cm. Additional spare nails are provided.



STEP 16

Stand the cabinet upright.

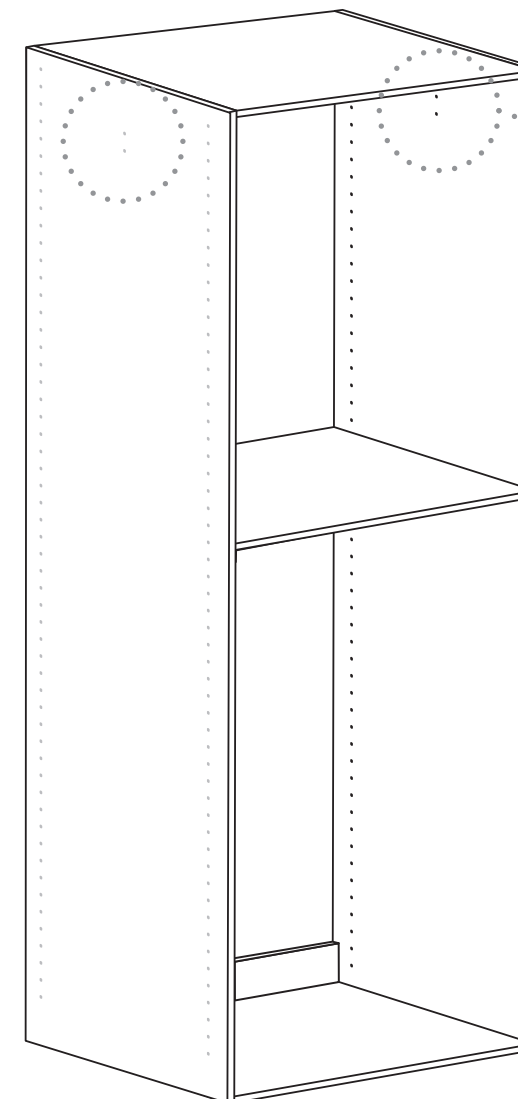


WARNING

The assembled cabinet will be heavy.
For your safety, a minimum of two people is recommended to lift the cabinet upright. Bend your knees and lift with your legs - not your back!

Orientation

Note – Correct orientation is vital for proper hole spacing when installing drawer runners and door hinges.



TOP
1536mm and 2048mm Cabinet Shells
include additional holes for
Hangrail installation.

LUGNA

FORM & FUNCTION

CABINET CARE INSTRUCTIONS

Everyday care for your cabinets:

Liquid spills should be cleaned up as they occur. Liquids and other damp objects, i.e. towels, will eventually cause permanent damage should they be left unattended.

Everyday clean-up of cabinets can be done with a damp cloth and a dry cloth. Ensure you use a clean cloth every time when wiping down your cabinets, as foreign dirt, grease, and oils may inadvertently be transferred to the surface.

Cleaning melamine products:

Oils, grease, and other soils that do not respond to water can be removed with a solution of mild soap and water. The surface should be rinsed immediately with a clean, damp cloth and dried thoroughly with a soft cloth to avoid streaking or moisture seeping into the seams around the edges.

PLEASE NOTE: Never use abrasive cleaners, ammonia, bleaching agents, scouring pads or powdered cleaners on any type of cabinetry.

Cleaning cabinet hardware:

Brass and Silver cleaners are not recommended for cleaning handles. Some of these cleaning solutions contain harsh chemicals that may damage the finish on your handles.

Wash your hardware with a solution of warm water and a small amount of mild dish detergent. Dry your hardware and areas around the cleaned area immediately.

Hinges can be cleaned with a dry cloth or cotton-tipped swab.