



nexus



Nexus Gateway Home Lite 21463

QUICK START GUIDE

Nexus Gateway Home Lite is a universal remote and automation gateway that allows total control of all your BrilliantSmart devices, compatible Infrared (IR) controllable devices and selected WiFi enabled smart home devices through a simple and easy to use mobile APP.

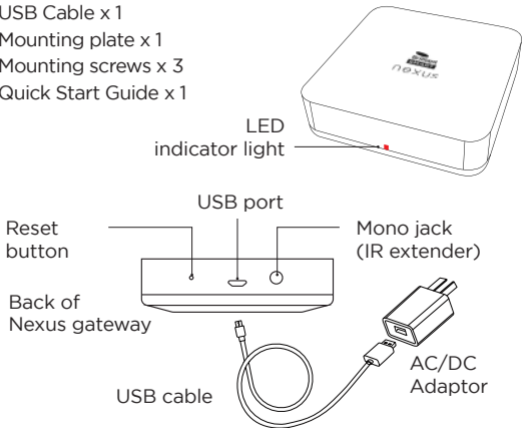
Nexus Gateway Home Lite Supported Devices:

- **IR Devices:** Most brands of Air Conditioners, Televisions and other A/V devices.
- **WiFi Devices:** BrilliantSmart devices, lighting, security, sensors, air-movement, garage doors, curtains/blinds, irrigation, plus many more devices.
- **Smart Speakers:** Amazon Alexa & Google Assistant smart device range.

Nexus Gateway can be used for voice control with Amazon and Google to control your smart devices.

Box content

- Nexus Home Lite universal gateway (model 21463) x 1
- Power Adaptor x 1
- USB Cable x 1
- Mounting plate x 1
- Mounting screws x 3
- Quick Start Guide x 1



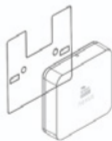
BEFORE INSTALLATION, PLEASE CHECK THAT THE LOCATION OF THE BRILLIANTSMART NEXUS GATEWAY IS WITHIN RANGE OF YOUR HOME WIFI AND SIGNAL IS STRONG.

The Nexus gateway requires line of sight to your infra-red devices. This means the Nexus is ideally mounted on your ceiling or wall for best range. Alternatively, it can be placed on a shelf or entertainment unit as long as there is an uninterrupted line of sight to the infra red devices intended to be controlled.

Note: Nexus must run on its own power source. The power socket distance to be no more than 1m.

Mounting plate installation:

If you are mounting onto the wall/ceiling, mark the location. Drill the holes and use the screws provided to fix the mounting plate at the desired location. Mount the gateway onto the mounting plate hooks.



Alternatively, you can purchase a downlight ceiling mount kit (model 21575/06) and attach your Nexus gateway to this kit and replace one of your existing downlights with the gateway. We recommend you use a licensed electrician as the Nexus Gateway requires its own power source (separate to your existing downlights).

Installation

1. Ensure you have installed & registered the BrilliantSmart Nexus App on your mobile device. Ensure your mobile device is connected to your 2.4GHz WiFi network.
2. Unpack the fixture carefully and dispose of the packaging material thoughtfully.
3. Place your BrilliantSmart Nexus Home Gateway into the desired location (either mount to the ceiling or wall or place in a location with a power socket within 1m range).
4. Ensure your power socket is switched off.
5. Plug the USB cable into the gateway USB port, then plug the other end of USB cable into the AC/DC power adaptor. Ensure the plug is firm.
6. Plug the AC/DC power adaptor into the power outlet.
7. Turn on the power and your Nexus gateway will be ready for WiFi pairing.

NEXUS GATEWAY LED INDICATOR LIGHT STATUS

Solid Red	Ready to connect/pair to your BrilliantSmart Nexus App via WiFi
Blinking Red	Unable to connect to your WiFi network
Blinking Blue	No able to connect to your WiFi internet
Solid Blue	Connected/paired with the BrilliantSmart Nexus App and WiFi

If you need to reset your Nexus Gateway, please press and hold the restart button for 10 seconds.

Your Nexus Gateway LED indicator light should change to solid red ready for pairing.

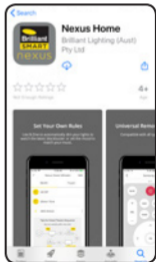
Connect to your WiFi

Ensure your mobile phone is connected to your 2.4GHz WiFi network. Your mobile phone and smart device needs to be within 2 bar range of your WiFi router.

We suggest for initial connection, you remove your mobile device protective cover to ensure a strong WiFi signal.

Download the BrilliantSmart Nexus App

Please download the **free** BrilliantSmart Nexus App from the App store or Google Play store, or scan the QR code below.

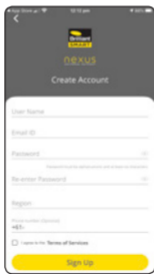


Register the BrilliantSmart Nexus App

Open the BrilliantSmart Nexus App.

Register a new account or if existing user, login with your user name and password.

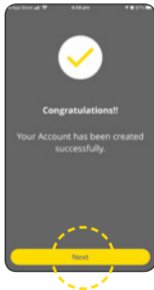
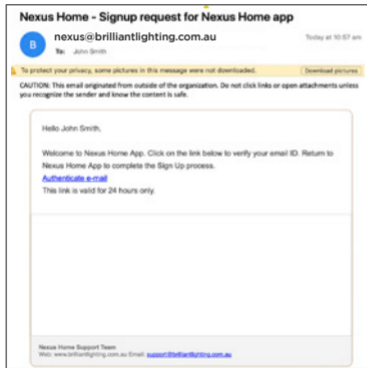
For new users – create your new account and press **‘Sign Up’**. The App will send you an email to verify your email address.



Go to your email account and select the **Nexus home – signup request** email.

Select **'Authenticate email'** and this will open your browser and **'Verify'** your account.

Go back to the BrilliantSmart Nexus App where you will receive a **'Congratulations'** notification. Press **'Next'**.



Add your BrilliantSmart Nexus gateway to your App

1. Select the correct Nexus Gateway.

You can rename the Nexus Gateway to one of your choosing – eg: Smith downstairs.

Press **'Next'**.



2. Ensure your mobile device is connected to your 2.4GHz WiFi network. Your mobile device and Nexus Gateway needs to be within 2 bar range of your WiFi router.

We suggest for initial connection, you remove your mobile device protective mobile phone cover to ensure a strong WiFi signal.



3. Power on your Nexus Gateway.
4. The LED indicator light should be **SOLID RED** which means it's ready to pair with your BrilliantSmart Nexus App.

Select **'Next'**.



5. Ensure your mobile device and your Nexus Gateway are within 5m of your WiFi router.

6. Select the Nexus Lite Gateway.



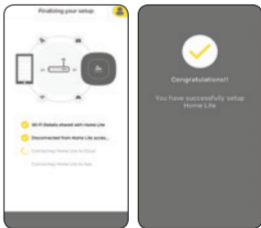
7. Ensure the correct WiFi network is listed or press **'Select Wi-Fi'** to select another network. Enter your WiFi network password and press **'Connect Wi-Fi'**.

Your gateway will start connecting to the WiFi.



8. Your Nexus Gateway connects to your WiFi network, Cloud and the BrilliantSmart Nexus App.

You will receive a **'Congratulations'** screen when successfully connected to your WiFi network and your BrilliantSmart App.



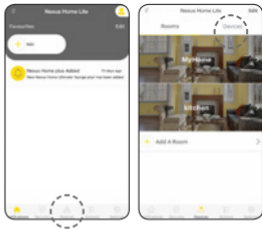
9. Select devices to add to the Nexus App.

Select **'Rooms'**

You can add rooms to the App with a photo.

Select **'Devices'**

To add your devices to the App select **'Add a Device'**.



10. Select the device you want to add and follow the instructions.



11. To import all your BrilliantSmart devices, select 'Import from Brilliant Smart App' and follow the instructions.

For full instructions on how to pair, add devices, add voice control, and for more features – you can download the full user manual from our website. Please go to:

www.brilliantsmart.com.au/nexus

Warning

1. To prevent injury DO NOT open or tamper with internals of this device.
2. Power surge/power loss could possibly reset the nexus gateway. If this happens follow setup instructions.
3. Disconnect the nexus gateway from the power supply before cleaning. Clean with a damp cloth, do not use detergents under any circumstances.
4. Keep out of reach of children.
5. Do NOT touch the nexus gateway with wet hands due to risk of electric shock.
6. Do NOT place the nexus gateway near heat sources such as ovens, microwaves, hot pans
7. BrilliantSmart Nexus App screens may differ due to application updates and improvements.

Disposal

Please dispose of this packaging and product thoughtfully once it has passed its useful life. When your smart device comes to the end of its life or you choose to update or upgrade it, please do not dispose of it with your normal household waste. Please recycle where facilities exist.

When disposing of this fitting, check with your local authority for suitable options.

Warranty

Brilliant Lighting warrants this product against defects in manufacture and workmanship for a period of 12 months from date of purchase. Warranty does not include damage or loss arising from incorrect installation, operation or maintenance of this product, damage caused through modification, or incorrect installation.

Our goods come with guarantees that cannot be excluded under the Australian Consumer Law. You are entitled to a replacement or refund for a major failure and compensation for any other reasonably foreseeable loss or damage. You are also entitled to have the goods repaired or replaced if goods fail to be of acceptable quality and the failure does not amount to a major failure.

Any claim under this warranty must be made within 12 months of the date of purchase of the product.

Refer to our website brilliantlighting.com.au for terms and conditions and warranty claims.

This warranty is given by:
Brilliant Lighting (Aust) Pty. Ltd.
(ABN 37 006 203 694)
956 Stud Road Rowville, VIC 3178
Phone: 03 9765 2555
Email: warranty@brilliantlighting.com.au

MADE IN CHINA

Troubleshooting

Problem:

Nexus Gateway does not switch ON

Possible Cause

No Mains Power

Suggested Solution

Check connections, fuses and switches

Problem:

Cannot link smart device with BrilliantSmart Nexus App

Possible Cause

1. Modem signal weak
2. Router/modem/smart phone firewall is enabled
3. Internet connection is down
4. BrilliantSmart Nexus App not installed correctly

Suggested Solution

- Place Nexus Gateway and modem closer together
- Disable firewalls on all devices
- Contact your provider
- Remove App and re-install

For any other problems connecting your Nexus Gateway to BrilliantSmart Nexus App please visit:

www.brilliantsmart.com.au/faqs



Brilliant Lighting

956 Stud Road
Rowville Vic 3178 Australia

www.brilliantlighting.com.au

Australian Sales

T 03 9765 2555

T 1800 817 754 (interstate only)

F 03 9763 0277

E warranty@brilliantlighting.com.au

New Zealand Sales

T 09 974 9618

E sales@brilliantlighting.co.nz