

**PCS-305A**

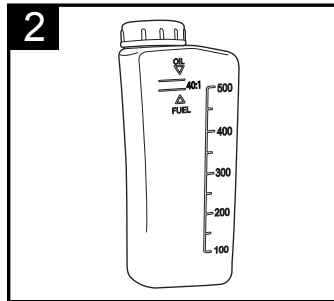
305mm (12") 25.4cc Petrol Chainsaw



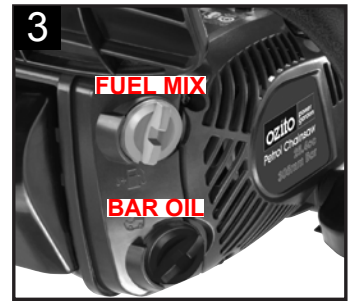
## My Chainsaw won't start!

**1 Check On/Off switch.**

Was the On/Off switch set to the On ("I") position? The chainsaw will only start if the switch is in the On ("I") position.

**2 Is the fuel mix correct?**

Use fresh unleaded fuel and 2 stroke oil in 40:1 mix. **(Following prolonged storage, you must change with fresh fuel & oil to prevent stalling).**

**3 Is the fuel in the correct tank?**

Have you put fuel mix into the fuel tank and not the bar oil tank? If so you will need to drain & refill correctly.

**4 Was the choke engaged?**

The choke control needs to be fully raised for start up. The choke control will then retract on its own when the throttle trigger is pressed.

**5 Is the priming bulb full?**

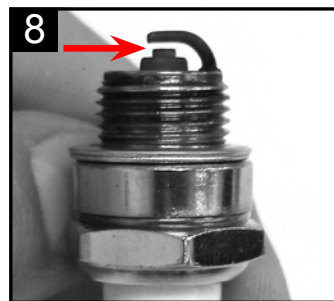
The priming bulb must be full to start the chainsaw. To do so press the priming bulb **6 times** or until the bulb is full of fuel. Now start the chainsaw.



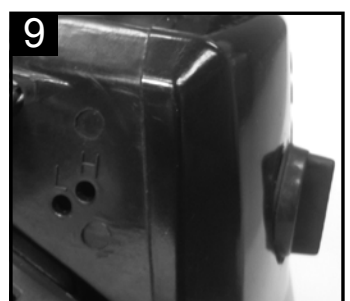
**Have you pulled up to 15 times?** Repeat at least **15 times minimum** for the engine to start. When started allow 10 seconds warm up before use.

**7 Spark plug lead & filter.**

The spark plug is to be in firm contact with the lead. Inspect filter and clean or replace if necessary.

**8 Spark plug gap 0.7mm?**

Periodically inspect and clean gap or replace when necessary.



**Are you having trouble tuning your chainsaw?** The carburettor is factory set and should not require adjustment. Contact Ozito Customer Service for advice and instructions.

**PCS-305A**

305mm (12") 25.4cc Petrol Chainsaw



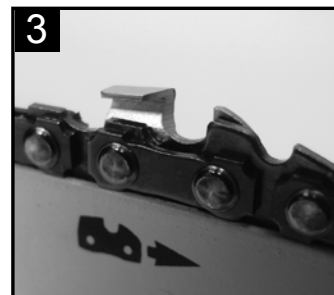
## My Chainsaw won't cut!

**Chain brake disengaged?**

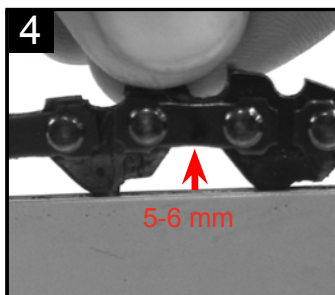
The chain will not rotate unless the chain brake is disengaged. Pull guard backwards **FIRMLY** to disengage brake.

**Was the throttle safety lock depressed?**

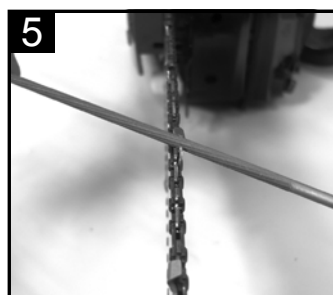
Once started for the chainsaw to run you must depress the throttle safety lock and throttle trigger.



**Does the tooth direction match the chain link icon on the side of the guide bar?** If not remove chain and fit in the correct direction.

**Is the chain tension correct?**

The correct chain tension is achieved when the chain can be pulled 5-6mm away from the guide bar, the chain links should stay in the guide bar track.

**Is the chainsaw sharp?**

Ensure the chain is checked regularly to maintain optimum performance. Replacement chains are also available

**Is the chain bar oil in correct tank?**

If filled incorrectly drain and fill chain bar tank with chain bar oil.

**Chain stops on contact with material to be cut?**

The idling adjustment screw is factory set and should not require adjustment. Contact Ozito Customer Service for advice and instructions.

**Need more info?**

Scan QR code on your mobile device for our website link. [www.ozito.com.au](http://www.ozito.com.au)