

R18CLVH1



IMPORTANT!

It is essential that you read the instructions in this manual before assembling, operating, and maintaining the product.

Subject to technical modification.

Safety, performance, and dependability have been given top priority in the design of your cordless cultivator.

INTENDED USE

The cordless cultivator is intended for outdoor use only. The product is designed for cultivating or loosening soil in an open domestic garden area.

Do not use the product for any other purpose.

GENERAL PRODUCT SAFETY WARNINGS

⚠ WARNING! Read all safety warnings, instructions, illustrations and specifications provided with this power tool. Failure to follow all instructions listed below may result in electric shock, fire and/or serious injury.

Save all warnings and instructions for future reference.

The term "power tool" in the warnings refers to your mains-operated (corded) product or battery-operated (cordless) product.

WORK AREA SAFETY

- **Keep work area clean and well lit.** Cluttered or dark areas invite accidents.
- **Do not operate power tools in explosive atmospheres, such as in the presence of flammable liquids, gases or dust.** Power tools create sparks which may ignite the dust or fumes.
- **Keep children and bystanders away while operating a power tool.** Distractions can cause you to lose control.

ELECTRICAL SAFETY

- **Power tool plugs must match the outlet. Never modify the plug in any way. Do not use any adapter plugs with earthed (grounded) power tools.** Unmodified plugs and matching outlets will reduce risk of electric shock.
- **Avoid body contact with earthed or grounded surfaces, such as pipes, radiators, ranges, and refrigerators.** There is an increased risk of electric shock if your body is earthed or grounded.
- **Do not expose power tools to rain or wet conditions.** Water entering a power tool will increase the risk of electric shock.
- **Do not abuse the cord. Never use the cord for carrying, pulling or unplugging the power tool. Keep cord away from heat, oil, sharp edges, or moving parts.** Damaged or entangled cords increase the risk of electric shock.
- **When operating a power tool outdoors, use an extension cord suitable for outdoor use.** Use of a cord suitable for outdoor use reduces the risk of electric shock.
- **If operating a power tool in a damp location is unavoidable, use a residual current device (RCD)**

protected supply. Use of an RCD reduces the risk of electric shock.

PERSONAL SAFETY

- **Stay alert, watch what you are doing, and use common sense when operating a power tool. Do not use a power tool while you are tired or under the influence of drugs, alcohol, or medication.** A moment of inattention while operating power tools may result in serious personal injury.
- **Use personal protective equipment. Always wear eye protection.** Protective equipment such as a dust mask, non-skid safety shoes, hard hat, or hearing protection used for appropriate conditions will reduce personal injuries.
- **Prevent unintentional starting. Ensure the switch is in the off-position before connecting to power source and/or battery pack, picking up or carrying the tool.** Carrying power tools with your finger on the switch or energising power tools that have the switch on invites accidents.
- **Remove any adjusting key or wrench before turning the power tool on.** A wrench or a key left attached to a rotating part of the power tool may result in personal injury.
- **Do not overreach. Keep proper footing and balance at all times.** This enables better control of the power tool in unexpected situations.
- **Dress properly. Do not wear loose clothing or jewellery. Keep your hair and clothing away from moving parts.** Loose clothes, jewellery, or long hair can be caught in moving parts.
- **If devices are provided for the connection of dust extraction and collection facilities, ensure these are connected and properly used.** Use of dust collection can reduce dust-related hazards.
- **Do not let familiarity gained from frequent use of tools allow you to become complacent and ignore tool safety principles.** A careless action can cause severe injury within a fraction of a second.

POWER TOOL USE AND CARE

- **Do not force the power tool. Use the correct power tool for your application.** The correct power tool will do the job better and safer at the rate for which it was designed.
- **Do not use the power tool if the switch does not turn it on and off.** Any power tool that cannot be controlled with switch is dangerous and must be repaired.
- **Disconnect the plug from the power source and/or remove the battery pack, if detachable, from the power tool before making any adjustments, changing accessories, or storing power tools.** Such preventive safety measures reduce the risk of starting the power tool accidentally.
- **Store idle power tools out of the reach of children and do not allow persons unfamiliar with the power tool or these instructions to operate the power tool.** Power tools are dangerous in the hands of untrained users.
- **Maintain power tools and accessories. Check for misalignment or binding of moving parts, breakage of parts and any other condition that may affect the power tool's operation.** If damaged, have the power

tool repaired before use. Many accidents are caused by poorly maintained power tools.

- **Keep cutting tools sharp and clean.** Properly maintained cutting tools with sharp cutting edges are less likely to bind and are easier to control.
- **Use the power tool, accessories and tool bits etc. in accordance with these instructions, taking into account the working conditions and the work to be performed.** Use of the power tool for operations different from those intended could result in a hazardous situation.
- **Keep handles and grasping surfaces dry, clean and free from oil and grease.** Slippery handles and grasping surfaces do not allow for safe handling and control of the tool in unexpected situations.

BATTERY TOOL CARE AND USE

- **Recharge only with the charger specified by the manufacturer.** A charger that is suitable for one type of battery pack may create a risk of fire when used with another battery pack.
- **Use power tools only with specifically designated battery packs.** Use of any other battery packs may create a risk of injury and fire.
- **When battery pack is not in use, keep it away from other metal objects, like paper clips, coins, keys, nails, screws or other small metal objects, that can make a connection from one terminal to another.** Shorting the battery terminals together may cause burns or a fire.
- **Under abusive conditions, liquid may be ejected from the battery; avoid contact. If contact accidentally occurs, flush with water. If liquid contacts eyes, additionally seek medical help.** Liquid ejected from the battery may cause irritation or burns.
- **Do not use a battery pack or tool that is damaged or modified.** Damaged or modified batteries may exhibit unpredictable behaviour resulting in fire, explosion or risk of injury.
- **Do not expose a battery pack or tool to fire or excessive temperature.** Exposure to fire or temperature above 130°C may cause explosion.
- **Follow all charging instructions and do not charge the battery pack or tool outside the temperature range specified in the instructions.** Charging improperly or at temperatures outside the specified range may damage the battery and increase the risk of fire.

SERVICE

- **Have your power tool serviced by a qualified repair person using only identical replacement parts.** This will ensure that the safety of the power tool is maintained.
- **Never service damaged battery packs.** Service of battery packs should only be performed by the manufacturer or authorised service providers.

CULTIVATOR SAFETY WARNINGS

- Never carry the product while the product is running.
- Read the instructions carefully. Be familiar with the controls and the correct use of the product.
- Use the product only in daylight or with good artificial light.

- Never allow children or people who are unfamiliar with these instructions to use the product. Local regulations may restrict the age of the operator.
- Never operate the product while people, especially children, or pets are nearby. Keep in mind that the operator or user is responsible for accidents or hazards.
- While operating the product, always wear substantial footwear and long trousers.
- Thoroughly inspect the area where the product is to be used and remove all objects which can be thrown by the product.
- Before each use, always visually inspect to see, that the housing is undamaged and that guards and handles are in place and properly secured. Replace worn or damaged components in sets to preserve balance.
- Keep hands away from the rotating tines at all times and especially when turning on the product.
- Turn off the product, and remove the battery pack. Make sure that all moving parts have come to a complete stop:
 - before leaving the product unattended
 - before cleaning the product or clearing a blockage
 - before checking for any damage after hitting an object
 - if the machine starts to vibrate abnormally (check immediately)
 - before performing maintenance
- Operate the product only in temperatures between 0°C and 40°C.

ADDITIONAL BATTERY SAFETY WARNINGS

- To reduce the risk of fire, personal injury, and product damage due to a short circuit, never immerse the product, battery pack, or charger in fluid or allow fluid to flow inside them. Corrosive or conductive fluids, such as seawater, certain industrial chemicals, and bleach or bleach-containing products, etc., can cause a short circuit.
- Charge the battery pack in a location where the ambient temperature is between 10°C and 38°C.
- Store the battery pack in a location where the ambient temperature is between 0°C and 20°C.

TRANSPORTATION AND STORAGE

- Allow the product to cool down before storing or transporting.
- Remove all foreign materials from the product. Store the product in a cool, dry, and well-ventilated place that is inaccessible to children. Keep the product away from corrosive agents, such as garden chemicals and de-icing salts. Do not store the product outdoors.
- For transportation in a vehicle, secure the product against movement or falling to prevent injury to persons or damage to the product.
- Store the product in a location where the ambient temperature is between -10°C and 50°C.

TRANSPORTING LITHIUM BATTERIES

Transport the battery pack in accordance with local and national provisions and regulations.

Follow all special requirements on packaging and labelling when transporting batteries by a third party. Ensure that

no batteries can come in contact with other batteries or conductive materials while in transport by protecting exposed connectors with insulating, non-conductive caps or tape. Do not transport battery packs that are cracked or leaking. Check with the forwarding company for further advice.

MAINTENANCE

- Use only original manufacturer's replacement parts, accessories, and attachments. Failure to do so can cause possible injury, can contribute to poor performance, and may void your warranty.
- Servicing requires extreme care and knowledge and should be performed only by a qualified service technician. Have the product serviced by an authorised service centre only.
- Check all nuts, bolts, and screws at frequent intervals for proper tightness to ensure that the product is in safe working condition.

SYMBOLS ON THE PRODUCT



Safety alert



Read and understand all instructions before operating the product. Follow all warnings and safety instructions.



Regulatory Compliance Mark (RCM). The product meets applicable regulatory requirements.



Wear eye protection.



Wear hearing protection.



Do not expose the product to rain or damp conditions.



Keep hands away from rotating tines.



Keep feet away from rotating tines.



Beware of thrown or flying objects. Keep all bystanders, especially children and pets, at least 15 m away from the operating area.



Waste electrical products should not be disposed of with household waste. Please recycle where facilities exist. Check with your local authority or retailer for recycling advice.

SYMBOLS IN THIS MANUAL



Parts or accessories sold separately

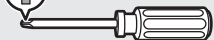
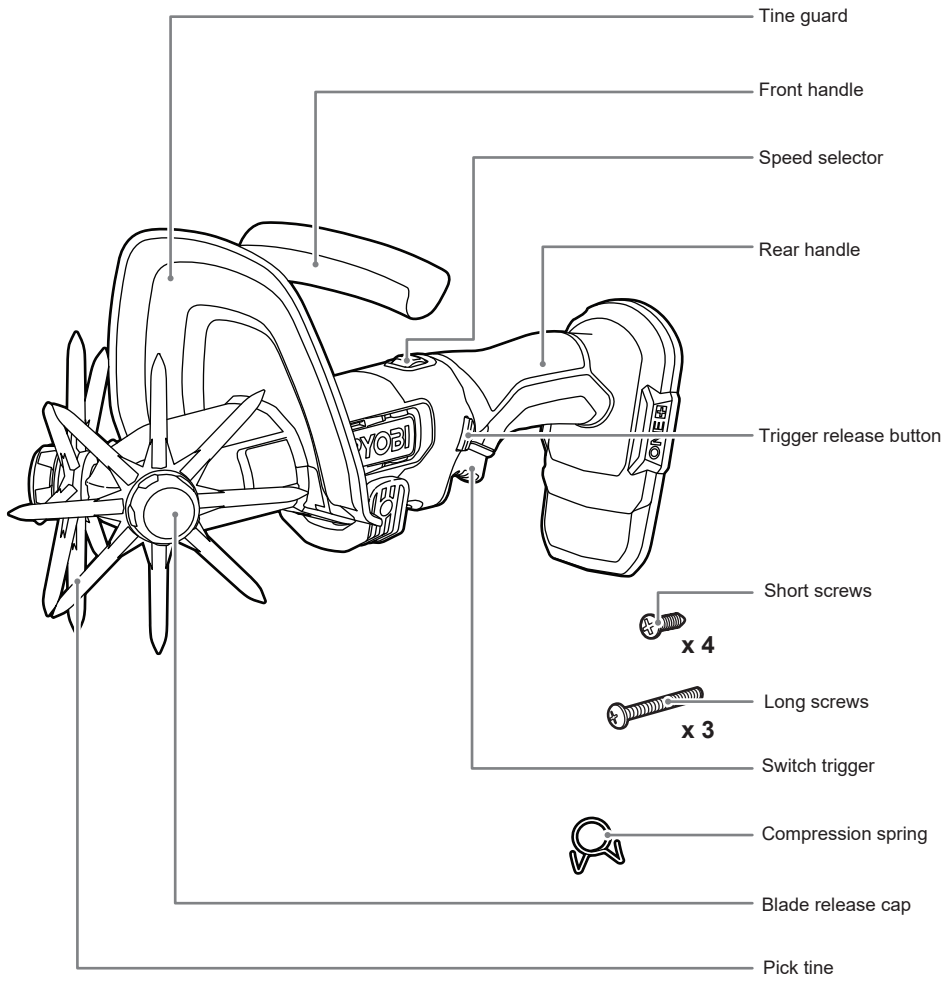


Note



Warning

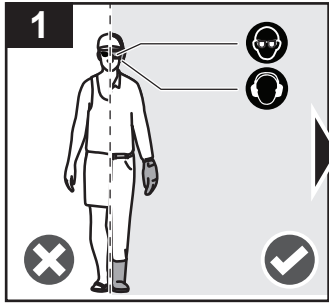
R18CLVH1



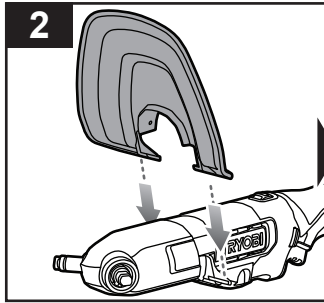
Battery pack

Charger

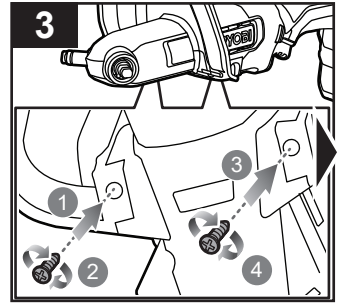
Grease



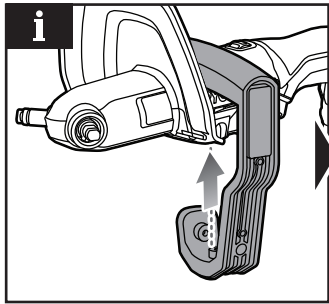
Always wear safety goggles or safety glasses with side shields when operating the product. Failure to do so could result in objects being thrown into your eyes, resulting in possible serious injury.



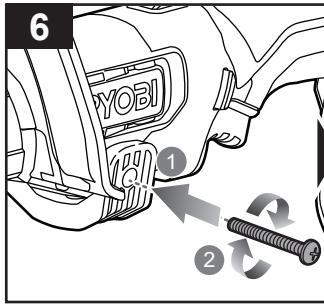
Push down to attach the tine guard into the product.



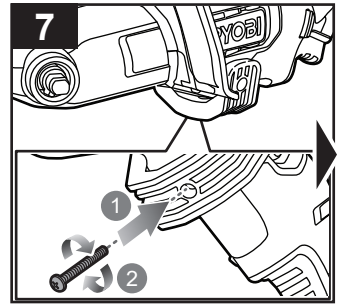
Secure the base part of the tine guard onto the product using the short screws and rotate clockwise to tighten.



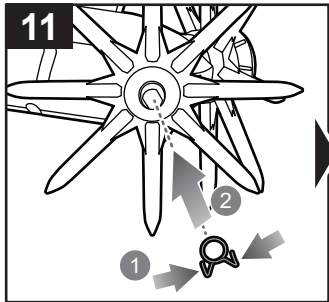
NOTE: The front handle can be installed on the left or right side of the product.



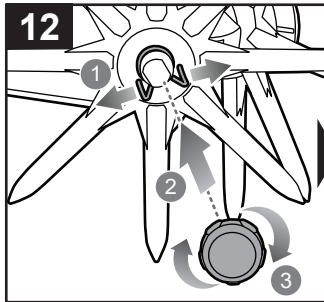
Secure the right side of the front handle using the long screw. Rotate clockwise to tighten.



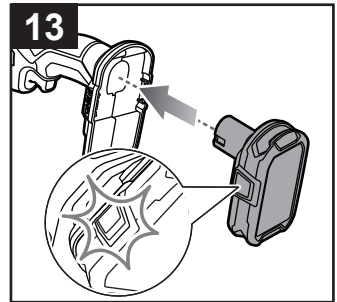
Secure the bottom of the front handle using the long screw and rotate clockwise to tighten.



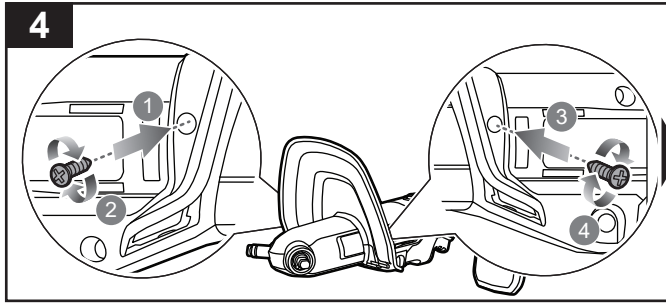
Press the compression spring and attach it onto the right tine.



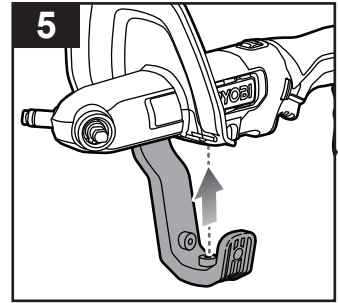
Release the compression spring to secure the right tine. Attach the blade release cap onto the product. Turn the blade release cap clockwise to secure.



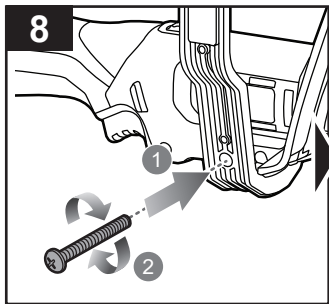
Insert the battery pack into the product until the latches click into place.



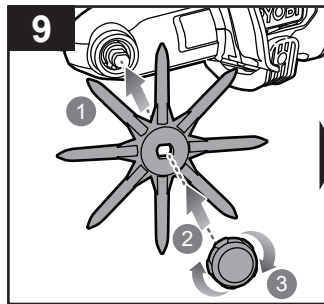
Secure the upper part of the tine guard onto the product using the short screws and rotate clockwise to tighten.



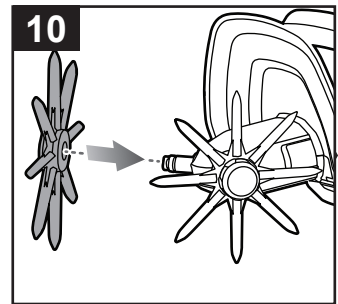
Push the front handle onto the product until it is securely attached.



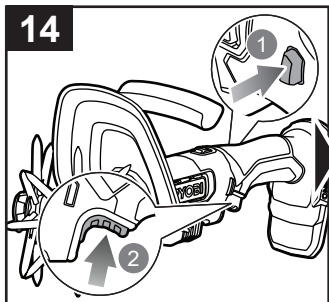
Secure the left side of the front handle using the long screw. Rotate clockwise to tighten.



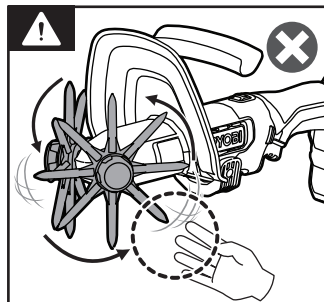
Attach the left tine and blade release cap onto the product. Turn the blade release cap clockwise to secure it.



Attach the right tine onto the product.

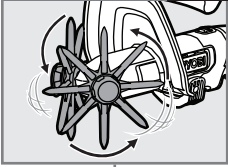


Press the trigger release button and squeeze the switch trigger to turn on the product.

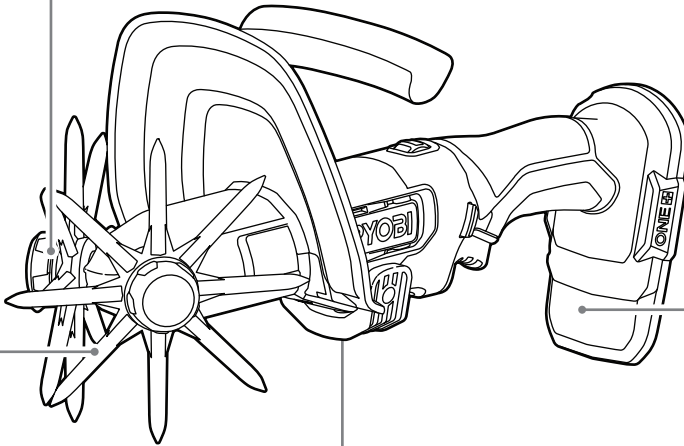
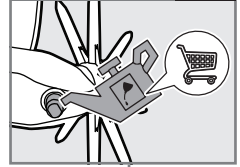


WARNING: Keep hands and feet away from the rotating tines at all times.

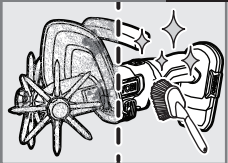
Operating the product **p.9**



Adding grease to the product **p.10**

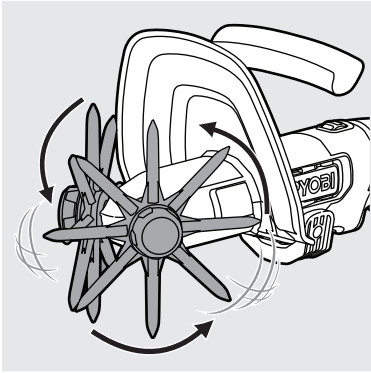


Cleaning the product **p.12**



Storing the product **p.13**





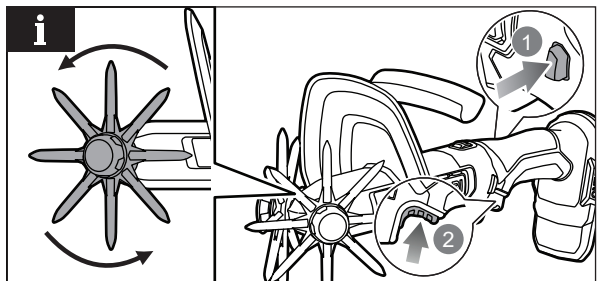
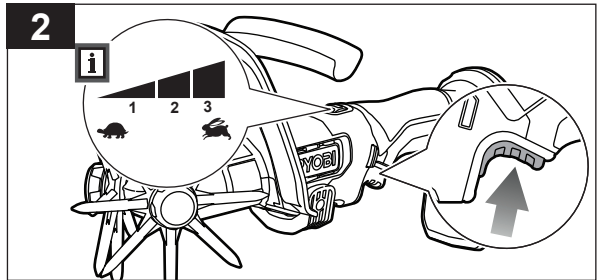
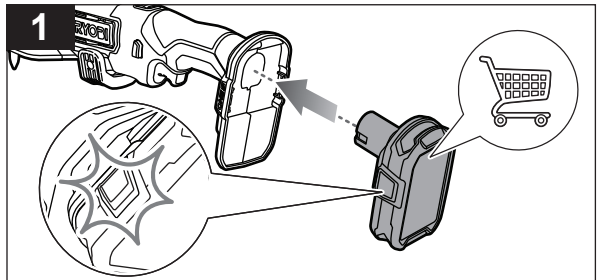
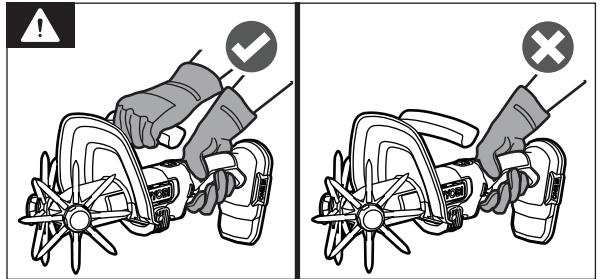
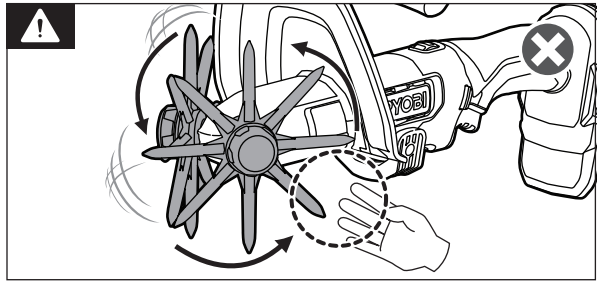
TWO-TINE OPERATION

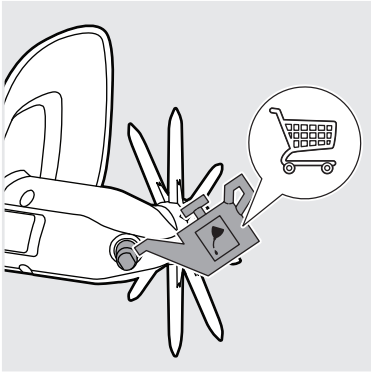
WARNING: Keep hands and feet away from the rotating tines at all times.

WARNING: The product must be adequately controlled by using two-handed operation at all times.

1. Insert the battery pack into the product until the latches click into place. Make sure that the battery pack is securely attached before using the product.
2. Press trigger release button at one side, then squeeze the switch trigger to turn on the product.

NOTE: Use the speed selector switch to increase the power when necessary. Slide the speed selector once for 180/min speed, two times for 200/min, and three times for 220/min. The product has only one rotation direction.



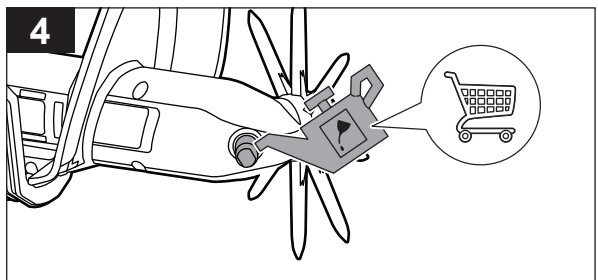
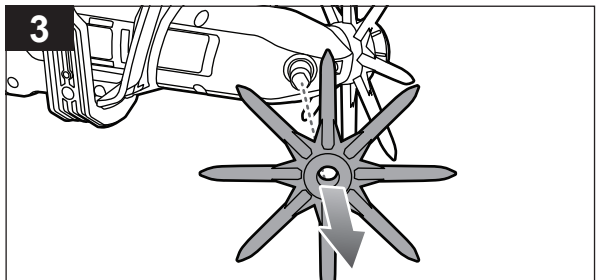
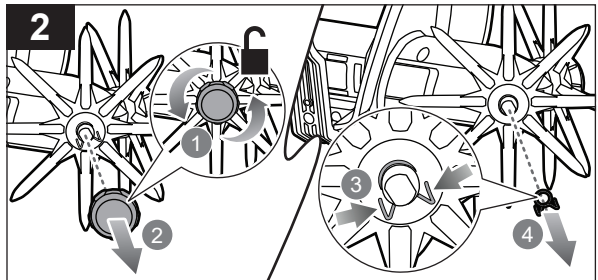
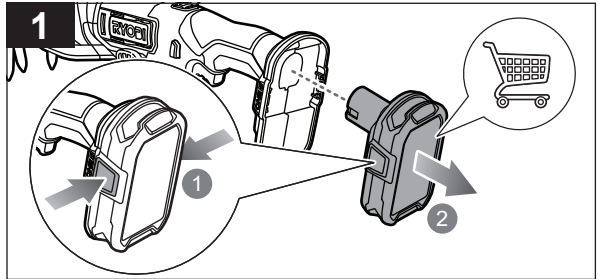
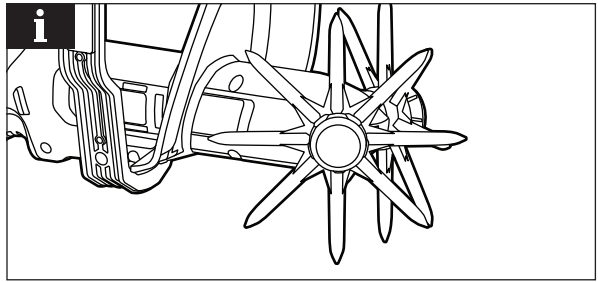


ADDING GREASE TO THE PRODUCT

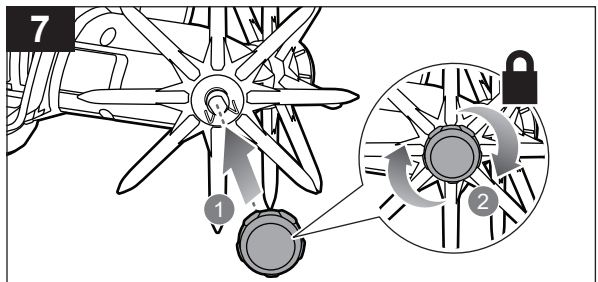
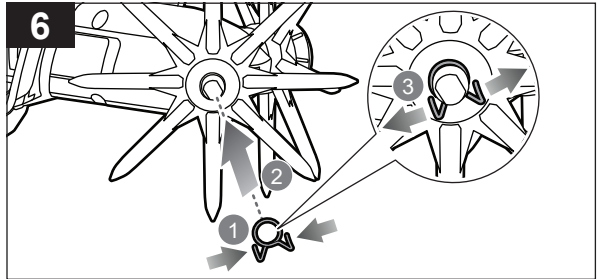
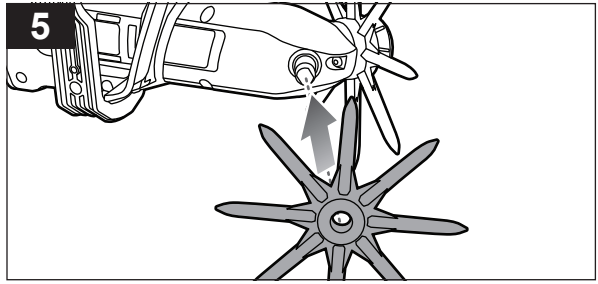
NOTE: Grease is added on the right hand drive shaft (from operator's position) during production to ensure that the tines run smoothly. The grease needs to be reapplied to the drive shaft after approximately 1 hour of use to help limit vibration in the tines. If you do not experience vibration while running the tines outside of the soil, then you do not need to reapply the grease. Perform the steps below to add grease to the drive shaft.

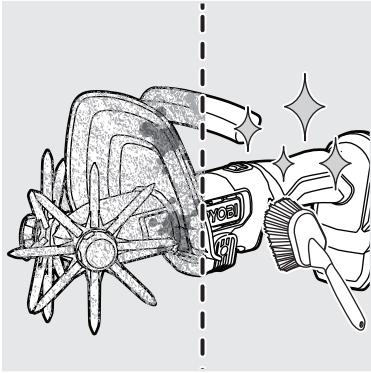
NOTE: General multipurpose grease can be used to lubricate the drive shaft.

1. Press the latch on each side, and remove the battery pack.
2. From the operator position, remove the right hand blade release cap and compression spring.
3. Remove the right tine.
4. Apply 1 g of general purpose grease onto the drive shaft. Evenly spread the grease around the entire drive shaft.



5. Attach the right tine onto the drive shaft.
6. Reinstall the compression spring onto the drive shaft.
7. Reinstall the blade release cap onto the drive shaft.

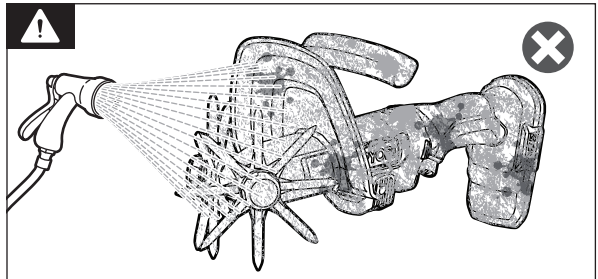
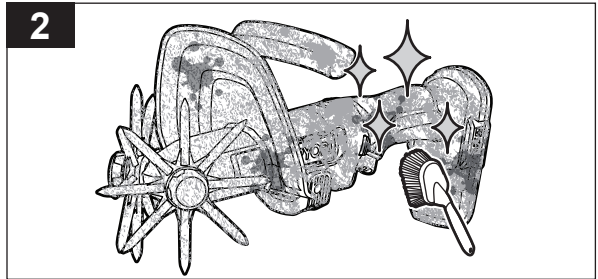
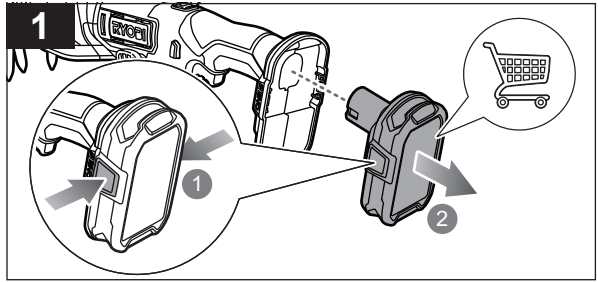




CLEANING THE PRODUCT

1. Press the latch on each side, and remove the battery pack.
2. Clean the product with a soft brush. Remove all foreign materials.

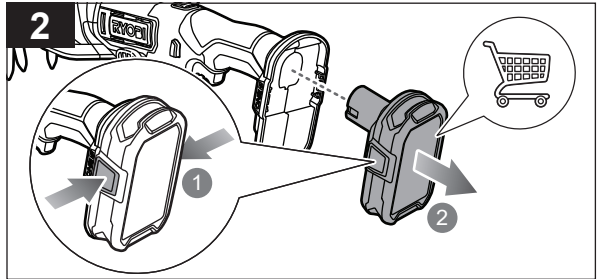
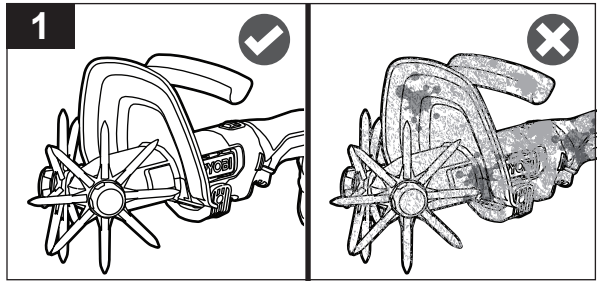
WARNING: Do not use water to clean the tines.





STORING THE PRODUCT

1. Clean the product.
2. Press the latch on each side, and remove the battery pack.
3. Store the product in a cool, dry, and well-ventilated place that is inaccessible to children and well away from sources of ignition.



PRODUCT SPECIFICATIONS

Cordless cultivator

Model R18CLVH1

Rated voltage 18 V d.c.

Working width 120 mm

Working depth 50 mm

Speed settings

Speed 1 (no-load speed) 180 /min

Speed 2 (no-load speed) 200 /min

Speed 3 (no-load speed) 220 /min

Weight without battery pack 1.60 kg

Weight with heaviest battery pack (9.0 Ah battery pack) 2.80 kg

Noise emission level (in accordance with EN 62841-1)

A-weighted sound pressure level at the operator position $L_{pA} = 65.4$ dB(A)

Uncertainty $K = 3.0$ dB

A-weighted sound power level $L_{wA} = 76.4$ dB(A)

Uncertainty $K = 3.0$ dB(A)

Vibration level (in accordance with EN 62841-1)

Front handle $a_h = 0.5$ m/s²

Rear handle $a_h = 0.8$ m/s²

Uncertainty $K = 1.5$ m/s²

Guaranteed sound power level 79 dB(A)

BATTERY AND CHARGER

Model R18CLVH1

Compatible battery packs RB18L13, RB18L13Z, RB18L15, RB18L15A, RB18L15B, RB18L15C, RB18L20, RB18L20A, RB1820C, RB18L25, RB18L25A, RB1825C, RB18L26, RB18L30, RB18L30A, RB18L40, RB18L40A, RB1840C, RB1840X, RB18L50, RB18L50A, RB1850C, RB1850X, RB18L60, RB18L60A, RB1860X, RB18L90, RB18L90A

⚠ WARNING! The declared vibration total values and the declared noise emission values given in this instruction manual have been measured in accordance with a standardised test and may be used to compare one tool with another. They may be used for a preliminary assessment of exposure.

The declared vibration and noise emission values represent the main applications of the tool. However, if the tool is used for different applications, used with different accessories, or poorly maintained, the vibration and noise emission may differ. These conditions may significantly increase the exposure levels over the total working period. An estimation of the level of exposure to vibration and noise should take into account the times when the tool is turned off or when it is running idle. These conditions may significantly reduce the exposure level over the total working period.

Identify additional safety measures to protect the operator from the effects of vibration and noise, such as maintaining the tool and the accessories, keeping the hands warm (in case of vibration), and organising work patterns.





Imported by:
Techtronic Industries Australia Pty Ltd
31 Gilby Road, Mount Waverley, VIC 3149
Melbourne, Australia

Techtronic Industries N.Z. Limited
Unit C, 70 Business Parade South,
Highbrook, Auckland 2013, New Zealand

RYOBI is a trade mark of Ryobi Limited, and is used under license.

