



RCF18



IMPORTANT!

It is essential that you read the instructions in this manual before assembling, operating, and maintaining the product.

Subject to technical modifications.

Safety, performance, and dependability have been given top priority in the design of your clamp fan.

INTENDED USE

The clamp fan is intended for general ventilation of most household spaces.

Do not use the product for any other purpose. Use of the product for operations different from intended could result in a hazardous situation.

FAN SAFETY WARNINGS

- This appliance is not intended for use by persons (including children) with reduced physical, sensory or mental capabilities, or lack of experience and knowledge, unless they have been given supervision or instruction concerning use of the appliance by a person responsible for their safety. Children should be supervised to ensure that they do not play with the appliance.
- Do not use the product to exhaust hazardous or explosive materials and vapors. The product is intended for general ventilation only.
- It is possible that unsecured hair may be drawn into the product and may become entangled causing injuries. Keep loose or flying hair away from the product at all times.

BATTERY SAFETY WARNINGS

To reduce the risk of fire, personal injury, and product damage due to a short circuit, never immerse your tool, battery pack or charger in fluid or allow a fluid to flow inside them. Corrosive or conductive fluids, such as seawater, certain industrial chemicals, and bleach or bleach-containing products, etc., can cause a short circuit.

TRANSPORTING LITHIUM BATTERIES

Transport the battery in accordance with local and national provisions and regulations.

Follow all special requirements on packaging and labelling when transporting batteries by a third party. Ensure that no batteries can come in contact with other batteries or conductive materials while in transport by protecting exposed connectors with insulating, non-conductive caps or tape. Do not transport batteries that are cracked or leaking. Check with the forwarding company for further advice.

MAINTENANCE

- Use only original accessories and spare parts. Should components that have not been described need to be replaced, please contact an authorised service centre. All repairs should be performed by an authorised service centre.
- Avoid using solvents when cleaning plastic parts. Most plastics are susceptible to various types of commercial solvents and may be damaged by their use. Use clean

cloths to remove dirt, carbon dust, etc.

- Do not at any time let brake fluids, gasoline, petroleum-based products, penetrating oils, etc., come in contact with plastic parts. Chemicals can damage, weaken or destroy plastic which may result in serious personal injury.

SYMBOLS ON THE PRODUCT



Safety Alert



Volts



Direct current



No-load speed



Regulatory Compliance Mark (RCM). Product meets applicable regulatory requirements.



The product can be used in a tropical climate.



Please read the instructions carefully before starting the machine.



Waste electrical products should not be disposed of with household waste. Please recycle where facilities exist. Check with your Local Authority or retailer for recycling advice.

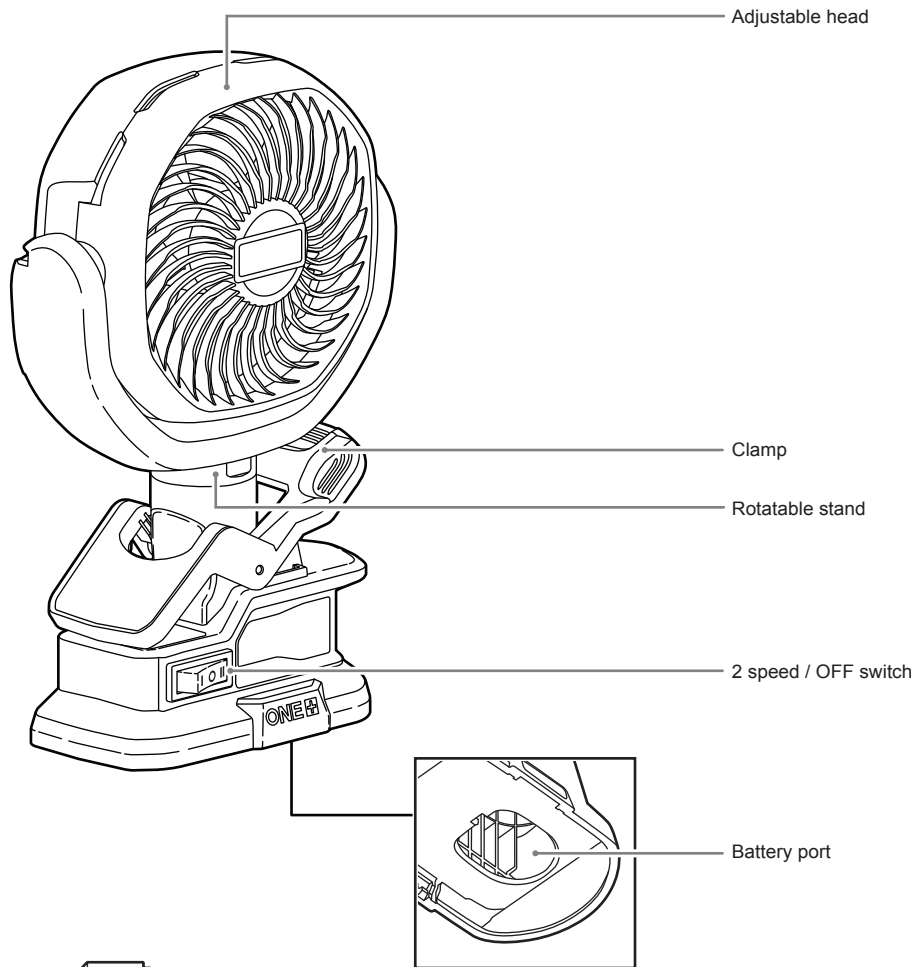
SYMBOLS IN THIS MANUAL



Note



Parts or accessories sold separately



Adjustable head

Clamp

Rotatable stand

2 speed / OFF switch

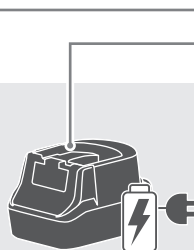
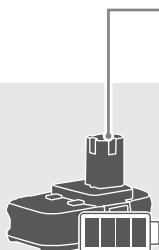
Battery port

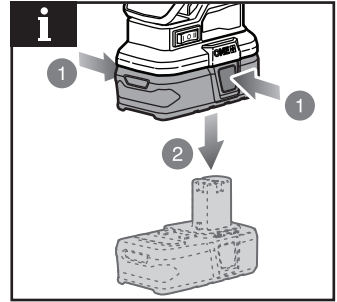
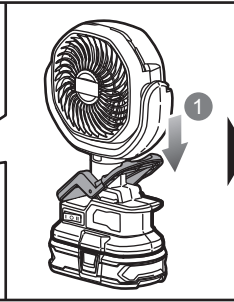
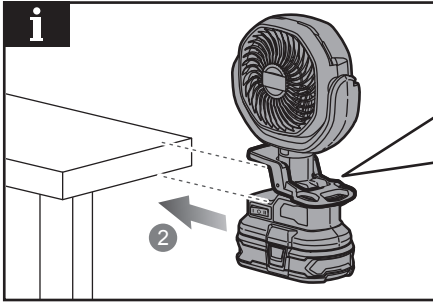
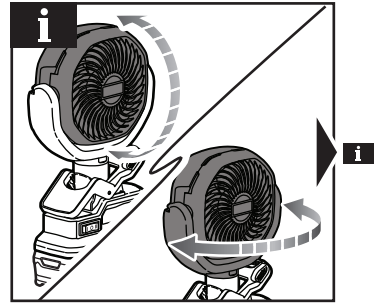
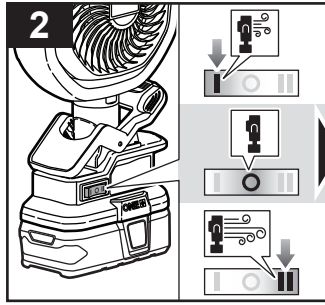
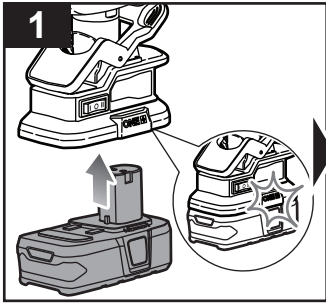


Operator's manual

Battery pack


Charger





PRODUCT SPECIFICATIONS

Clamp Fan

Model	RCF18
Voltage	18 V 
Fan speed	2500 / 3400 rpm
Air flow	221 / 306 m³/hr
Drum diameter	11 cm
Drum rotation	
Horizontal	300°
Vertical	290°
Weight - excluding battery pack	0.45 kg

BATTERY AND CHARGER

Model	Compatible battery pack (not included)	Compatible charger (not included)
Lithium-Ion	RB18L13	
	RB18L15	
	RB18L15A	
	RB18L15B	
	RB18L20	
	RB18L20A	BCS618G
	RB18L25	BCL14181H
	RB18L25A	BCL14183H
	RB18L40	BCL14181V*
	RB18L40A	RC18150U
	RB18L50	RC18627U
	RB18L50A	RC18120
	RB18L60A	RC18115
	RB18L90A	
	RB1815C	
	RB1820C	
	RB1840C	
	RB1840X	

* for vehicles with 12V DC outlets







Imported by:

Techtronic Industries Australia Pty Ltd
31 Gilby Road, Mount Waverley, VIC 3149
Melbourne, Australia

Techtronic Industries N.Z. Limited
Unit C, 70 Business Parade South,
Highbrook, Auckland 2013, New Zealand

RYOBI is a trade mark of Ryobi Limited, and is used under license.

