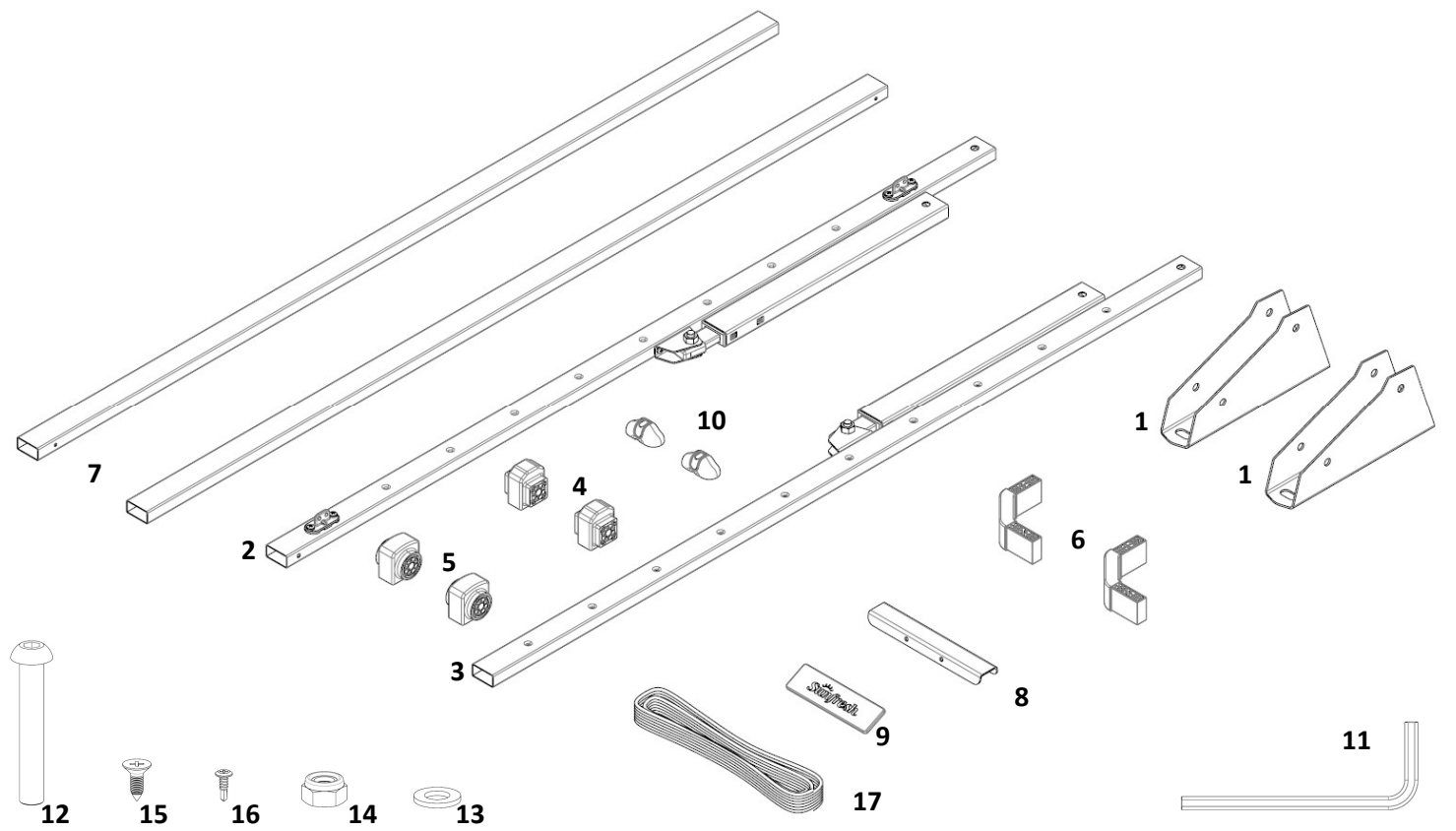


IMPORTANT – READ THESE INSTRUCTIONS BEFORE INSTALLING YOUR CLOTHESLINE

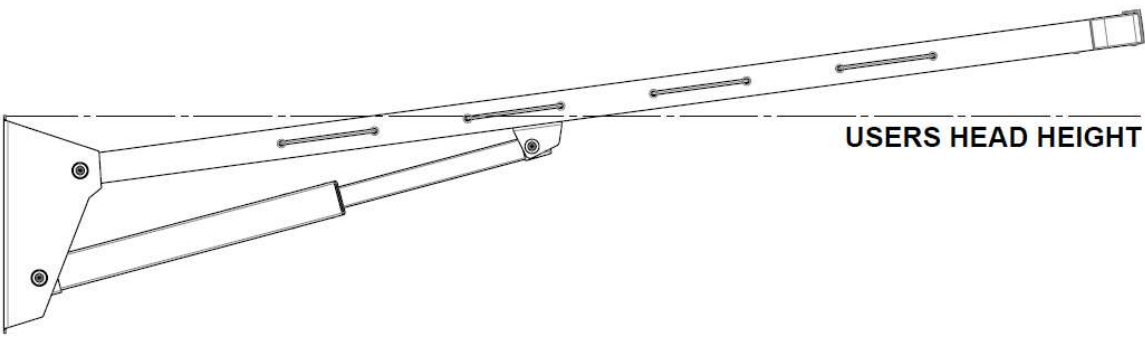
1. Carton Contents

Item	Description	Quantity
1	Wall Bracket	2
2	Arm Assembly – Left	1
3	Arm Assembly - Right	1
4	Arm End Cap (Small)	2
5	Strut End Cap (Big)	2
6	Corner	2
7	Front Bar	2
8	Front Bar Joiner	1
9	Front Bar Handle	1

Item	Description	Quantity
10	Tie Off Cap	2
11	5mm Allen Key	1
12	M8 x 50mm bolt	4
13	M8 Washer	8
14	M8 Nut	4
15	4.2 x 16mm Screw	4
16	4.2 x 12mm Screw	2
17	PVC Line	1

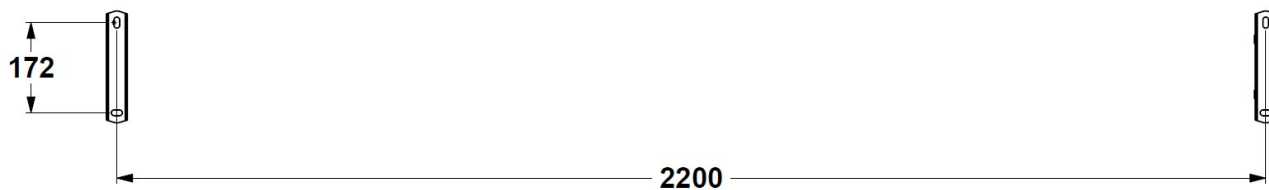


2. Choose Location



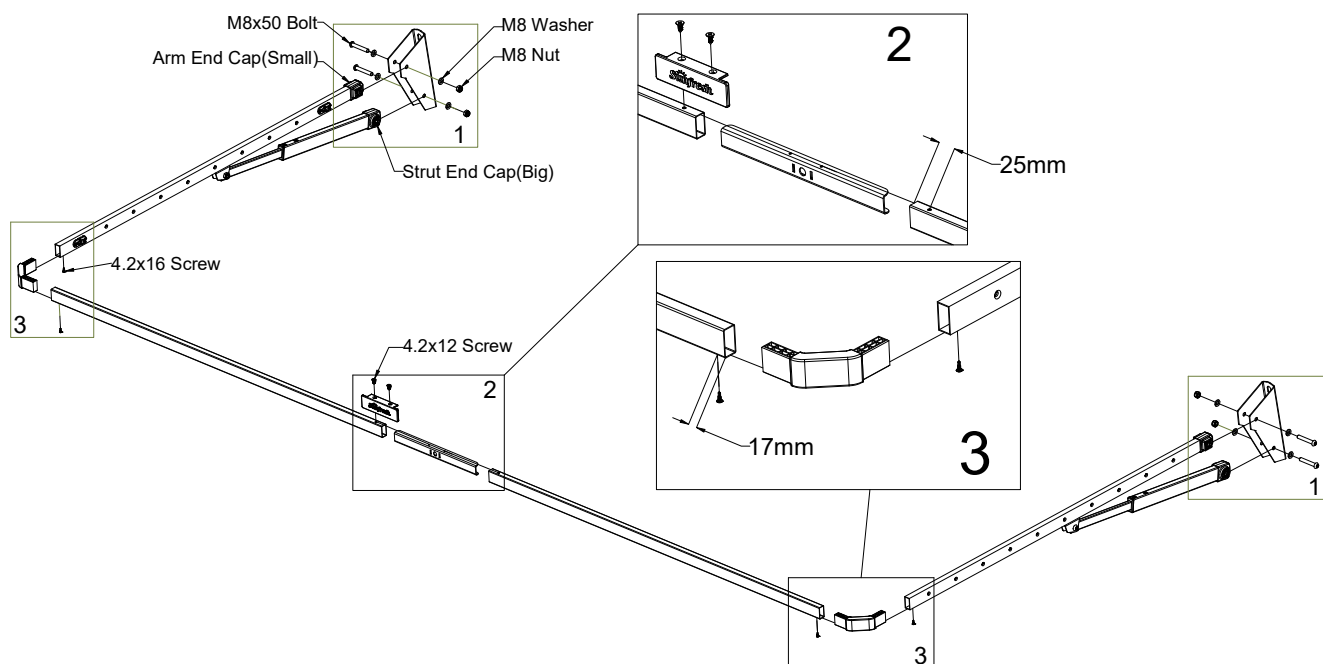
- Allow 300mm clearance either side and 500mm above the clothesline.
- Install a minimum of 1200mm above the ground. This will allow the clothesline frame to fold down.
- Make sure the wall is of a solid construction.

3. Mount Wall Brackets



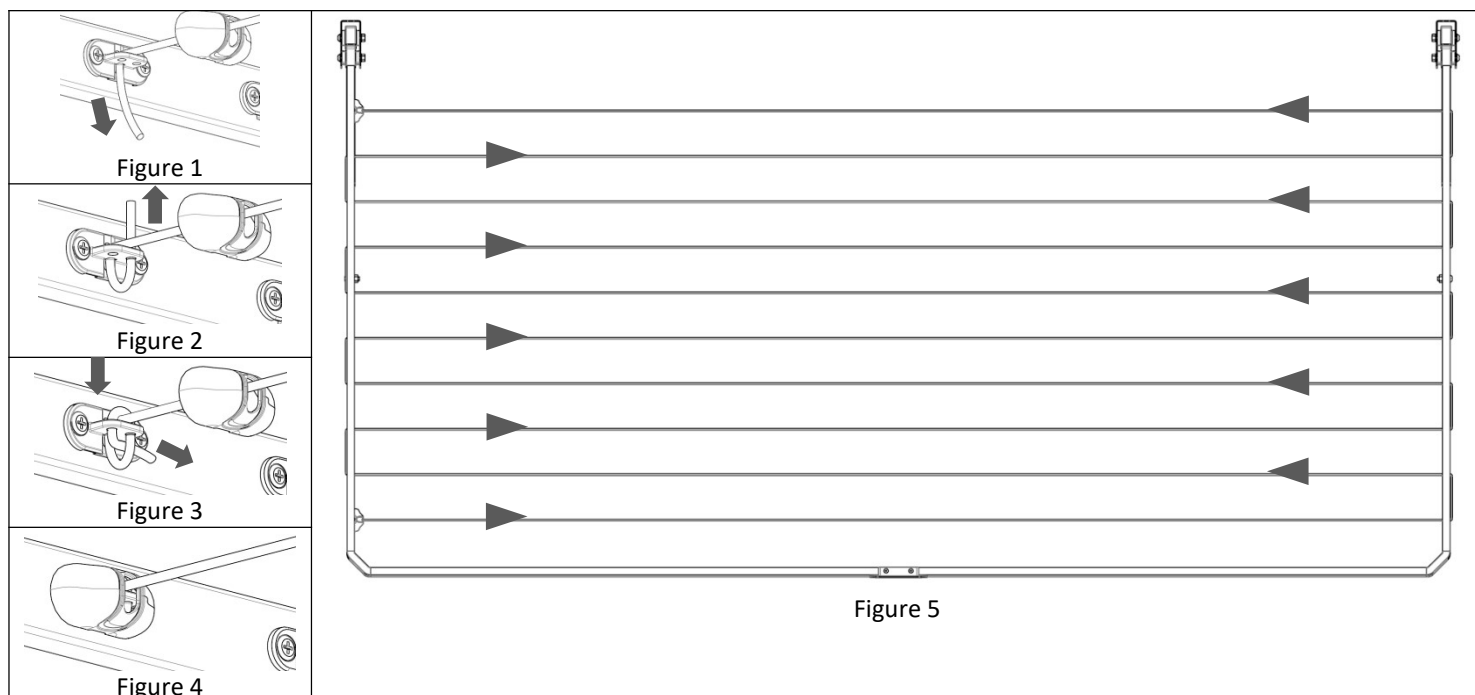
- To securely attach to a brick wall only drill into whole bricks. Do not drill into gaps (or mortar) between bricks.
- Measure out the dimensions and use an appropriate 8mm diameter drill bit.
- Use 4 x 8mm masonry wall anchors (not supplied).
- NB: We recommend using a spirit level and a straight edge to ensure brackets are the same height.

4. Assemble the Clothesline



- Step 1: Attach the Arm End Caps and Strut End Caps to the Left and Right Arm Assemblies. Attach Left and Right Arm Assemblies to the Wall Bracket using M8 Bolt, M8 Washer and M8 Nut ensuring that the nut is on the inside.
- Step 2: Join the two Front Bar pieces using the Front Bar Joiner and Handle using two 4.2 x 12mm Screws.
- Step 3: Connect both of the Corner pieces to the Front Bar ends using two 4.2 x 16mm Screws, then connect both Corner end pieces to the Left and Right Arm Assemblies using the remaining two 4.2 x 16mm Screws.

5. Thread the Line



- Step 1: Remove Tie Off Cap from tie off mount. Slide Tie Off Cap over end of PVC Line then thread the Line (from the top) into the hole closest to the frame. Figure 1.
- Step 2: Thread the Line back up and through the hole on the right. Figure 2.
- Step 3: Bring the Line back down through the last remaining hole. Feed the Line back through the loop created below. Figure 3.
- Step 4: Simply clip back the Tie Off Cap back. Your Line is now secured. Figure 4.
- Step 5: Thread the Line in the direction as shown in Figure 5 making sure you keep the Line taught at each end. Once at the tie off point follow steps 1 to 4 to secure.

Operation

- Hold the Front Bar in the centre.
- Lift from folded position until both side struts ‘click’ to lock.
- Lift and raise further to unlock and lower.

Safety Warnings

- Only use your clothesline to hang and dry washing.
- Remember the clothesline is not a children’s toy.
- Don’t use your clothesline if it is damaged.

Warranty - Terms and Conditions

Any claim under this warranty must be made within five years of the date of purchase of the product. Please note that the PVC Line is only covered for 12 months from date of purchase.

To make a claim under the warranty, take the product (with proof of purchase) to any Bunnings store (see www.bunnings.com.au for store locations).

Bunnings Group Ltd bears reasonable, direct, expenses of claiming under the warranty. You may submit details and proof to our store for consideration.

The warranty covers manufacturer defects in materials, workmanship and finish under normal use.

This warranty is provided in addition to other rights and remedies you may have under law: our goods come with guarantees which cannot be excluded under the Australian Consumer Law. You are entitled to replacement or refund for a major failure and to compensation for other reasonably foreseeable loss

Care and Maintenance

- Clean your clothesline with a damp cloth.

or damage. You are also entitled to have the goods repaired or replaced if the goods fail to be of acceptable quality and the failure does not amount to a major failure. If the clothesline is repaired or partly replaced under warranty the original warranty will not be extended.

The warranty excludes damage resulting from product misuse or product neglect. The warranty covers domestic use only and does not apply to commercial applications.

This warranty is given by Bunnings Group Limited ABN 26 008 672 179, 16-18 Cato Street, Hawthorn East, Victoria 3123, e-mail: customer_service@bunnings.com.au

WARRANTY EXCLUSIONS

Fading due to weather exposure or damage to the frame and line through accident misuse or negligence.

Note the following for future reference

Product Name:	
Date of purchase:	
Place of purchase:	