

12V Battery & Alternator Tester

Ozito

BATTERY & ALTERNATOR TESTER

12V

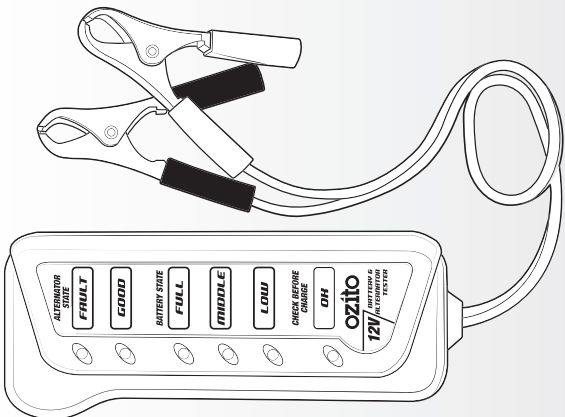
INSTRUCTION MANUAL

SPECIFICATIONS
 Input Max.: 12V DC
 Weight: 0.1 kg

ozito.com.au



OCBT-1200



GENERAL POWER TOOL SAFETY WARNINGS

WARNING! Read all safety warnings and all instructions. Failure to follow the warnings and instructions may result in electric shock, fire and/or serious injury.

- Work area safety
 - Keep work area clean and well lit. Cluttered or dark areas invite accidents.
 - Do not operate power tools in explosive atmospheres, such as in the presence of flammable liquids, gases or dust. Power tools create sparks which may ignite the dust or fumes.
 - Keep children and bystanders away while operating a power tool. Distractions can cause you to lose control.
- Electrical safety
 - Power tool plugs must match the outlet. Never modify the plug in any way. Do not use any adapter plugs with earthed (grounded) power tools. Unmodified plugs and matching outlets will reduce risk of electric shock.
 - Avoid body contact with earthed or grounded surfaces, such as pipes, radiators, ranges and refrigerators. There is an increased risk of electric shock if your body is earthed or grounded.
 - Do not expose power tools to rain or wet conditions. Water entering a power tool will increase the risk of electric shock.
 - Do not abuse the cord. Never use the cord for carrying, pulling or unplugging the power tool. Keep cord away from heat, oil, sharp edges or moving parts. Damaged or entangled cords increase the risk of electric shock.
 - Personal safety
 - Stay alert, watch what you are doing and use common sense when operating a power tool. Do not use a power tool while you are tired or under the influence of drugs, alcohol or medication. A moment of inattention while operating power tools may result in serious personal injury.
 - Use personal protective equipment. Always wear eye protection. Protective equipment such as dust mask, non-skid safety shoes, hard hat, or hearing protection used for appropriate conditions will reduce personal injuries.
- Prevent unintentional starting. Ensure the switch is in the off-position before connecting to power source and/or battery pack, picking up or carrying the tool. Carrying power tools with your finger on the switch or energising power tools that have the switch on invites accidents.

BATTERY TESTER WARNINGS

- WARNING! Save all warnings and instructions for future reference
- WARNING! Read all safety warnings and all instructions. Failure to follow the warnings and instructions may result in electric shock, fire and/or serious injury.
 - This appliance is only intended for lead acid batteries
 - This appliance is not intended for use by young or infirm persons unless supervised by a responsible person to ensure that they can use the appliance safely.
 - Read the instruction manual carefully. Failure to follow the instruction manual cannot cover all possible conditions and situations that may occur.
 - Common sense and caution are factors that cannot be built into this product but must be supplied by the operator.
 - It is recommended to work with someone who can come to your aid when working near a lead acid battery.
 - Avoid contact with leaking battery.
 - Have plenty of fresh water and soap nearby. In case battery acid contacts skin, clothing or eyes, immediately flush skin or clothing with soap and water. If acid enters eye, immediately flush eye with running cold water for at least ten minutes and get medical attention immediately.
 - Be extra cautious to reduce risk of dropping a metal tool onto the battery. It could spark or short-circuit the battery.
 - Remove personal metal items such as rings, bracelets, necklaces and watches when working with a lead acid battery. If a person produces a short circuit current high enough to weld a ring or the like to metal causing a severe burn.
 - Clean battery terminals. Be careful to keep corrosion from coming in contact with eyes.
 - Before testing inspect the battery for cracks or broken case or cover. If the battery is damaged, do not use the tester
- WARNING! Read all safety warnings and all instructions. Failure to follow the warnings and instructions may result in electric shock, fire and/or serious injury.
 - Operate in a safe work environment. Keep your work area clean and well lit.
 - Keep anyone wearing the appropriate safety equipment away from the work area.
 - Note: Minimize distractions in the work environment.
 - Distractions can cause you to lose control of the tool.
 - When connecting the battery tester cables to the battery, avoid creating sparks; especially when the battery is being charged. Explosive gases are created during charging. Sparking could also damage the vehicle electrical system.
 - Always lock up tools and keep them out of the reach of children
 - Do not expose battery tester to rain, snow or wet conditions.
 - Stay clear of hot engine and car parts.
- Personal Safety
 - Wear ANSI-approved safety goggles and protective gloves during set up and use of the Battery Tester.
 - Test in a well ventilated area. Explosive gases may be produced during testing. Do not smoke, cause sparks, or strike matches near the battery when testing.
 - Protective, electrically non-conductive clothes and non-skid footwear are recommended when working. Wear steel-toed boots to prevent injury from falling objects.

BATTERY TESTER WARNINGS

- Refer to the user manual of the battery being tested for testing instructions and precautions prior to using the battery tester.
 - Do not connect in reverse polarity.
 - Use this product in accordance with these instructions, taking into account the working conditions and the work to be performed. Use of this product for operations different from those intended could result in a hazardous situation.
 - This product is not a toy. Keep it out of reach of children.
 - Maintain labels and nameplates on the unit. These carry important safety information.
 - People with pacemakers should consult their physician(s) before use. Electromagnetic fields in close proximity to heart pacemaker could cause pacemaker interference or pacemaker failure. Caution is necessary when near coil, spark plug cables, or distributor of running engine. Engine should be off during distributor adjustment.
 - Undercharged lead-acid batteries will freeze during cold weather. Do not test or charge a frozen battery.
 - Do not smoke or have open flames near the battery.
 - Never remove battery lead tester clamps while testing.
 - Ensure automatic vehicles are in park with the handbrake engaged before starting the engine.
 - Ensure manual vehicles are in neutral with the handbrake engaged while running tests.
 - Put blocks on drive wheels and never leave car unattended while running tests.
 - Read Safety Road Rules 2009 penalty code 2135, it is illegal to leave "motor vehicle unattended with keys in ignition, motor running, brakes not secured or doors unblocked."
- Risk of Electric Shock
 - Never touch the clamps and the terminals with wet hands.
 - Do not pull the clamps from the terminals by pulling on the clamp cables.
 - Check the clamp leads for damage before every use.
 - Be certain of the test battery polarity before connecting the battery tester clamps. The RED (+) positive battery clamp goes to the positive terminal of the battery. The BLACK (-) negative battery clamp goes to the negative terminal of the battery. Reversing the battery tester battery clamps on the battery may damage the battery tester.
 - Do not drop the battery tester as it may affect proper operation.
 - Do not smoke or have open flames near the battery.
 - The warnings and precautions discussed in this manual cannot cover all possible conditions and situations that may occur. It must be understood by the operator that common sense and caution are factors which cannot be built into this product, but must be supplied by the operator.
 - Use extreme caution when working around the ignition coil, distributor cap, ignition wires and spark plugs. These components create hazardous voltages when the engine is running.
- Tester Use and Care Instructions
 - This battery tester was designed for specific functions. Do not modify, disassemble or alter the battery tester, all parts and accessories are designed with built-in safety features that may be compromised if altered.
 - Do not use the battery tester in a way for which it was not designed.

WARRANTY

The benefits provided under this warranty are in addition to other rights and remedies which are available to you at law. Our goods come with guarantees that cannot be excluded at law. You are entitled to a replacement or refund for a major failure and for compensation for any other reasonably foreseeable loss or damage. You are also entitled to have the goods repaired or replaced if the goods fail to be of acceptable quality and the failure does not amount to a major failure. Generally you will be responsible for all costs associated with a claim under this warranty, however, where you have suffered any additional direct loss as a result of a defective product you may be able to claim such expenses by contacting our customer service helpline above.

3 YEAR REPLACEMENT WARRANTY*

Your product is guaranteed for a period of **36 months from the original date of purchase**. If a product is defective it will be replaced in accordance with the terms of this warranty. Warranty excludes consumable parts, for example: valve adapters and accessories. *This product is intended for DIY use only and replacement warranty covers domestic use. **WARNING**

The following actions will result in the warranty being void.

- If the tool has been operated on a supply voltage other than that specified on the tool.
- If the tool shows signs of damage or defects caused by or resulting from abuse, accidents or alterations.
- Failure to perform maintenance as set out within the instruction manual.
- If the tool is disassembled or tampered with in any way.
- Professional, industrial or high frequency use.

IN ORDER TO MAKE A CLAIM UNDER THIS WARRANTY YOU MUST RETURN THE PRODUCT TO YOUR NEAREST BUNNINGS WAREHOUSE WITH YOUR BUNNINGS REGISTER RECEIPT. PRIOR TO RETURNING YOUR PRODUCT FOR WARRANTY PLEASE TELEPHONE OUR CUSTOMER SERVICE HELPLINE:

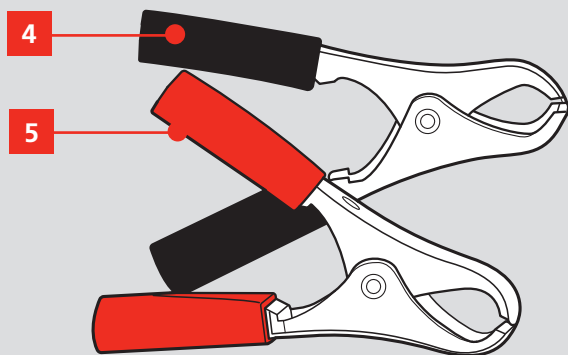
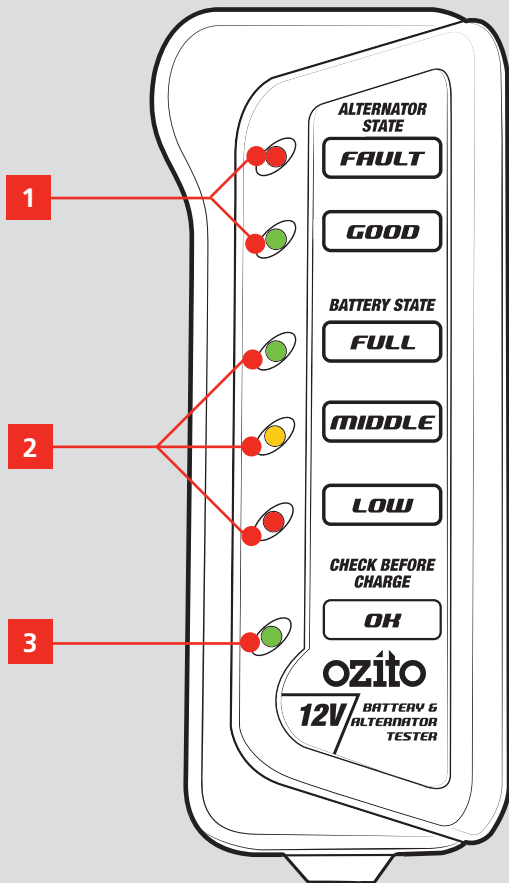
Australia: 1800 069 486
New Zealand: 0508 069 486

TO ENSURE A SPEEDY RESPONSE PLEASE HAVE THE MODEL NUMBER AND DATE OF PURCHASE AVAILABLE. A CUSTOMER SERVICE REPRESENTATIVE WILL TAKE YOUR CALL AND ANSWER ANY QUESTIONS YOU MAY HAVE RELATING TO THE WARRANTY POLICY OR PROCEDURE.

KNOW YOUR PRODUCT

12V BATTERY & ALTERNATOR TESTER

1. Alternator State LED's
2. Battery State LED's
3. Check Before Charge LED
4. Black Negative Terminal Clamp (-)
5. Red Positive Terminal Clamp (+)



ONLINE MANUAL

Scan this QR Code with your mobile device to take you to the online manual.



3 YEAR REPLACEMENT WARRANTY*

SETUP & PREPARATION

1. BATTERY CONNECTION

! WARNING! READ AND UNDERSTAND THE WARNINGS BEFORE SETUP AND TESTING.

! WARNING! ENSURE THE POWER CORD IS UNCOILED AND FULLY EXTENDED TO AVOID OVERHEATING THE POWER CORD. ENSURE THAT IT DOES NOT GET TANGLED OR CAUGHT IN ANY ROTATING PARTS WITHIN THE ENGINE COMPARTMENT OF THE VEHICLE.

! WARNING! ONLY FOR 12 VOLT LEAD ACID BATTERY.

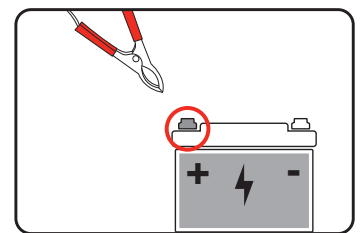
! WARNING! CHECK CORD AND CLAMP FOR DAMAGE BEFORE EVERY USE. DO NOT USE IF CORD OR CLAMP INSULATION IS MISSING OR DAMAGED AND WIRE IS EXPOSED.

Connecting to a Vehicle Battery

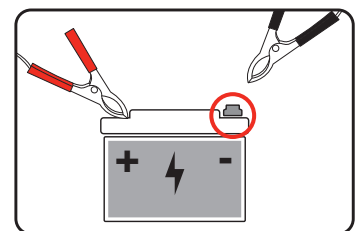
Before testing make sure the battery terminals are really clean as grease and dust could lead to errors in the test results. The battery MUST be disconnected prior to cleaning. Check the battery and connections for any cracks or damage before proceeding with cleaning and testing. To help ensure a good connection of the battery load tester clamps, clean the battery terminals with a solution of baking soda and water, and wipe the battery terminals with a cloth to remove any dirt and grease.

If the battery is still fitted to a motor vehicle, make sure that all the electronics are turned OFF, and that the ignition is turned OFF.

1. With the vehicle engine not running, connect the red positive terminal clamp to the positive (+) pole on your vehicle 12V battery.

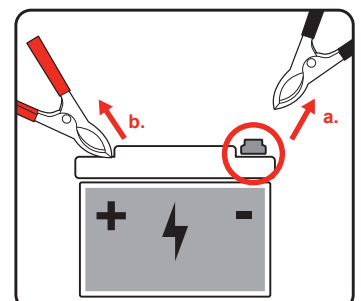


2. Connect the black negative terminal clamp to the negative (-) pole on your vehicle 12V battery.



Disconnecting from a Vehicle Battery

1. Remove the black negative terminal clamp from the negative (-) pole of your vehicle battery.
2. Remove the red positive terminal clamp from the positive (+) pole of the vehicle battery.



OPERATION

2. OVERVIEW

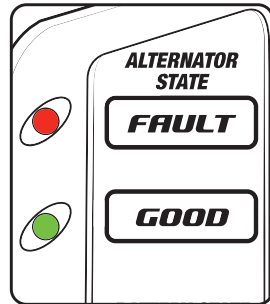
With the battery terminal clamps correctly connected to your vehicles 12V battery.

Alternator State

1. Start the engine and accelerate to 2000 rpm.

FAULT LED Red = Alternator voltage too high, could damage your battery

GOOD LED Green = Alternator working correctly.



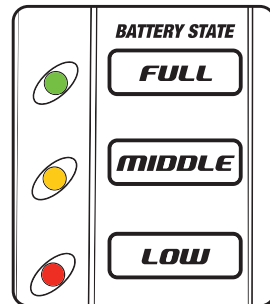
Battery State

1. Engine OFF

FULL LED Green = 12.6V–13.5V battery voltage

MIDDLE LED Yellow = 12.3V–12.5V battery voltage

LOW LED Red = 12–12.3V battery voltage



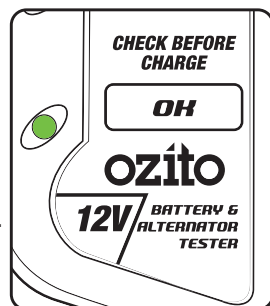
Check Before Charge

1. Engine OFF

OK LED Green = Battery can accept charge.

Note: The LED will not illuminate when the battery's voltage is 9.9V or below- battery is dead and cannot be charged.

Battery should be replaced.



3. DIAGNOSIS

Display 1

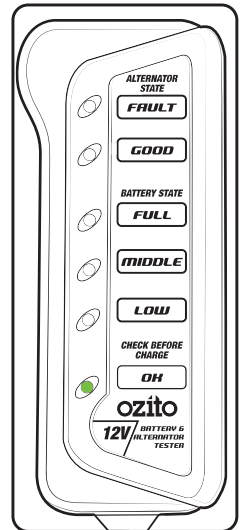
1. Engine: OFF
Battery voltage: 10–12V

OK LED - Green

Flat battery. Battery could be charged but voltage is very low.

Note: The LED will not operate when the battery's voltage is 9.9V or below- battery is dead and cannot be charged.

Battery should be replaced.



Display 2

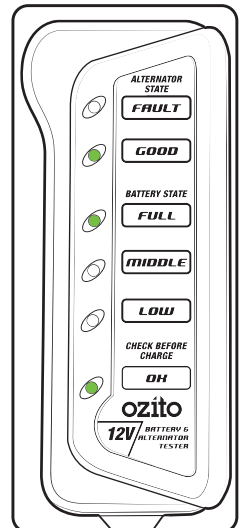
1. Engine: ON
Charging voltage: 13.6–14.5V

GOOD LED - Green

FULL LED - Green

OK LED - Green

Battery is accepting full charging voltage from alternator.



Display 3

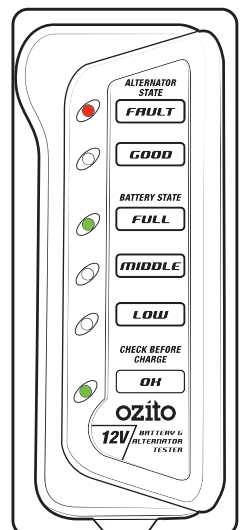
1. Engine: ON
Charging voltage: >14.6V

FAULT LED - Red

FULL LED - Green

OK LED - Green

Alternator output voltage is too high, could damage your battery.



OPERATION (cont.)

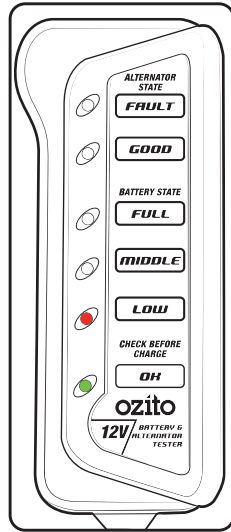
3. DIAGNOSIS (cont.)

Display 4

1. Engine: OFF
Battery voltage: 12-12.3V

LOW LED - Red
OK LED - Green

Low battery power.

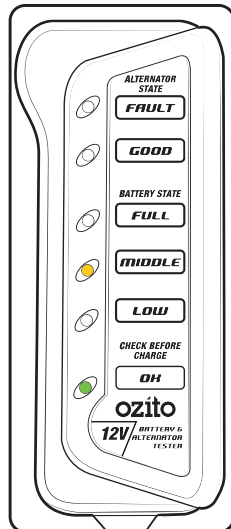


Display 5

1. Engine: OFF
Battery voltage: 12.3-12.5V

MIDDLE LED - Yellow
OK LED - Green

Middle battery power.

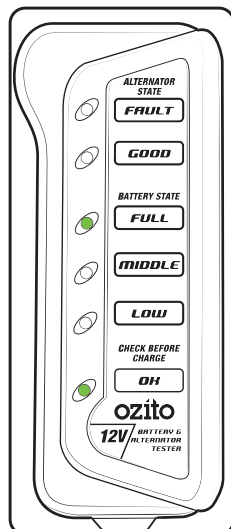


Display 6

1. Engine: OFF
Battery voltage: 12.6V-13.5V

FULL LED - Green
OK LED - Green

Full battery power.



MAINTENANCE

- If the enclosure of the battery tester requires cleaning, do not use solvents. Use a moist, soft cloth only. Never immerse any part of the Battery tester into liquid.
- Keep terminal clamps clean and dry at all times.

DESCRIPTION OF SYMBOLS

V	Volts	A	Amperes
	Regulatory Compliance Mark (RCM)		Warning
	Read Instruction Manual		

CARING FOR THE ENVIRONMENT



Power tools that are no longer usable should not be disposed of with household waste but in an environmentally friendly way. Please recycle where facilities exist. Check with your local council authority for recycling advice.



Recycling packaging reduces the need for landfill and raw materials. Reuse of recycled material decreases pollution in the environment. Please recycle packaging where facilities exist. Check with your local council authority for recycling advice.

SPARE PARTS

Spare parts can be ordered from the Special Orders Desk at your local Bunnings Warehouse.

For further information, visit www.ozito.com.au or contact Ozito

Customer Service:

Australia 1800 069 486

New Zealand 0508 069 486

E-mail: enquiries@ozito.com.au