



# Residential Ventilation

Wind & power driven vents for  
a fresher, healthier home



CSR

# Natural Wind Driven Ventilation

Energy-free solutions for a fresher, healthier home.



## Why Ventilate Your Home?

Effective ventilation is an important way to create a more comfortable, healthier and energy efficient home.

Reducing the heat in summer and managing moisture in winter helps to create a better living environment for you and your family.



### Heat Reduction

Reduces heat and replaces with outside air



### Energy Efficient

Helps reduce the load on air conditioning



### Moisture Management

Reduce the risk of moisture-related damage to your home



### Improve Air Quality

Replaces stale and polluted air inside your roof cavity with outside air





# WindMaster™

The WindMaster is a wind driven natural ventilator designed to exhaust heat & moisture from the roof space of your home, without the use of electrical energy.

## Benefits

### HEAT REDUCTION

Reduces heat from your roof space to help improve thermal performance

### MOISTURE MANAGEMENT

Reduces the risk of moisture-related damage to your home

### PEACE OF MIND

Australian made & tested to AS/NZS 4740

## Recommended Ventilation Levels\*

If your roof is a regular shape, one vent is sufficient for around 10 squares (90m<sup>2</sup>)

Roof Pitch	Total Ceiling Area (m <sup>2</sup> )	No. of WindMaster Required	Bradford Metal Eave Vents Required
>22°	<62	1	5
	<124	2	9
	<187	3	13
	<249	4	17
	<312	5	22
	<374	6	26

Where the roof pitch is ≤ 22°, please refer to the WindMaster Product Technical Statement for the number of vents required, available on the Bradford website.

\*As per NCC2019 Ventilation of Roof Spaces

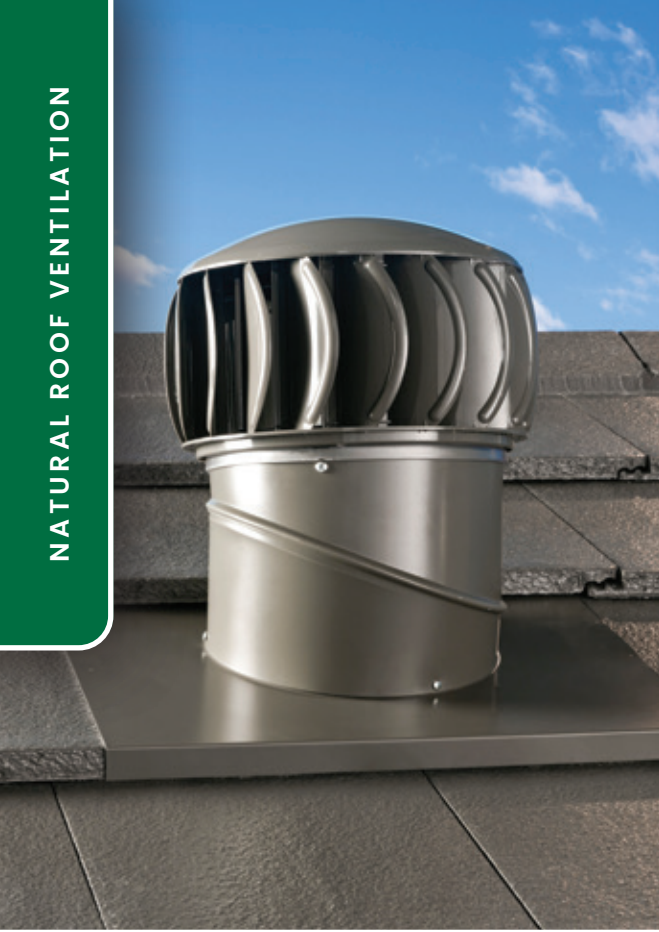


For further details including technical information, visit our website via QR code. For more information, call 1300 858 674.

## WindMaster colour range:



Colours have been reproduced as faithfully as possible, however actual colours may vary due to the printing process. We urge all customers to view a display before making your decision.



# SupaVent™

The SupaVent is a natural ventilator designed to exhaust heat and moisture from the roof space, without the use of electrical energy. The SupaVent is ideal for near coastal areas.

## Benefits

- ✔ **HEAT REDUCTION**  
Removes heat from your roof space to help improve thermal performance

---

- ✔ **MOISTURE MANAGEMENT**  
Reduces the risk of moisture-related damage to your home

---

- ✔ **DESIGNED FOR COASTAL AREAS**  
Built with stainless steel bearings to suit the coastal breeze

## Recommended Ventilation Levels

Roof Pitch	Total Ceiling Area (m <sup>2</sup> )	No. of SupaVent Required	Bradford Metal Eave Vents Required
	46	1	4
	92	2	7
	138	3	10
>22°	184	4	13
	231	5	16
	277	6	19
	323	7	22

Total Ceiling Area is defined as the total ceiling area directly under the roof/attic space.

Where the roof pitch is < 22°, the number of ventilators and eave vents specified must be doubled for the same ceiling area.

## SupaVent colour range:



Colours have been reproduced as faithfully as possible, however actual colours may vary due to the printing process. We urge all customers to view a display before making your decision.



For further details including technical information, visit our website via QR code. For more information, call 1300 858 674.



# TurboBeam™

The TurboBeam is a wind driven ventilator with a clear turbine head, designed to remove heat and moisture from the roof space. It also allows natural light to enter the roof space to deter unwanted insects and pests.

## Benefits

- ✔ **HEAT REDUCTION**  
Removes heat from your roof space to help improve thermal performance

---

- ✔ **MOISTURE MANAGEMENT**  
Reduces the risk of moisture-related damage to your home

---

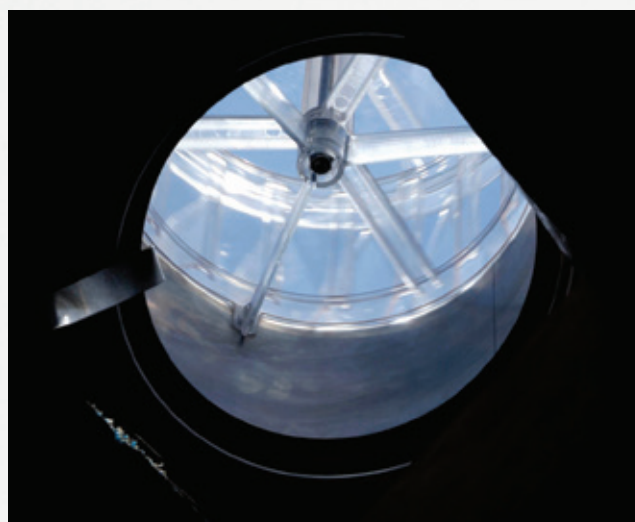
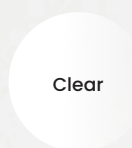
- ✔ **PROVIDES NATURAL LIGHT**  
Allows natural light into roof space to deter unwanted pests

## Recommended Ventilation Levels

Roof Pitch	Total Ceiling Area (m <sup>2</sup> )	No. of TurboBeam Required	Bradford Metal Eave Vents Required
	46	1	4
	92	2	7
	138	3	10
>22°	184	4	13
	231	5	16
	277	6	19
	323	7	22

Where the roof pitch is  $\leq 22^\circ$ , please refer to the TurboBeam Product Technical Statement for the number of vents required, available on the Bradford website.

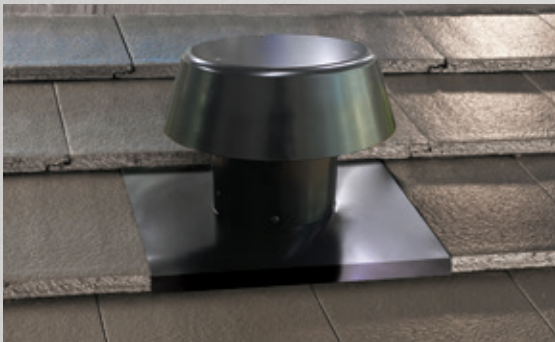
## TurboBeam colour range:



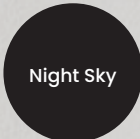
TurboBeam view from below



For further details including technical information, visit our website via QR code. For more information, call 1300 858 674.



Roof Valve BAL colour range:



Night Sky

## Roof Valve BAL

The Roof Valve BAL is a BAL-rated, low-profile static roof ventilator that allows the release of air from the roof space via a flexible duct. It is suitable for the wet areas of your home.

### Benefits

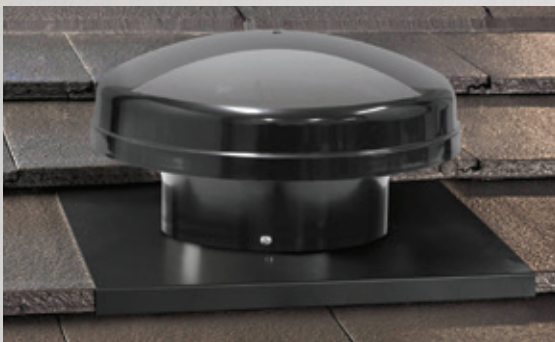
- ✔ **SUITABLE FOR BATHROOM, KITCHEN & LAUNDRY AREAS**  
Provides an outlet for external ventilation to prevent moisture entering your roof space, ducting not included

---

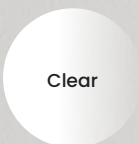
- ✔ **PEACE OF MIND**  
Australian made, compliant to AS3959:2018

---

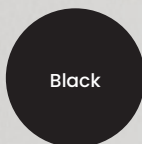
- ✔ **BAL-RATED**  
Suitable for homes in bushfire zones from BAL12.5 to BAL40



Roof Valve colour range:



Clear



Black

## Roof Valve

The Roof Valve with duct collar is a low-profile static roof ventilator that allows the release of air from the roof space or internal space via a flexible duct. Ideally suited for wet areas of your home such as bathroom and laundry.

### Benefits

- ✔ **SUITABLE FOR BATHROOM, KITCHEN & LAUNDRY AREAS**  
Provides an outlet for external ventilation to prevent moisture entering your roof space, ducting not included

---

- ✔ **MOISTURE MANAGEMENT**  
Reduces the risk of moisture-related damage to your home

---

- ✔ **PEACE OF MIND**  
Australian made & tested





**General Purpose Vent**  
colour range:

White

## General Purpose Vent

The General purpose vent is a compact wind driven ventilator designed to remove heat and odours from vehicles. Suitable for vans, trucks, trailers, caravans, canopies, boats, rail carriages and stationary locations.

### Benefits

- ✔ **DESIGNED FOR VEHICLES**  
Suitable for vehicles and stationary locations

---

- ✔ **IMPROVES AIR QUALITY**  
Removes unpleasant and toxic odours from vehicles

---

- ✔ **IMPACT RESISTANT**  
Built with impact resistant polymer



**TurboVentura**  
colour range:

Black

## TurboVentura™

The TurboVentura is a wind driven ventilator designed to reduce moisture from the roof space, without the use of electrical energy. Ideally suited for ventilating small areas such as a garage or shed.

### Benefits

- ✔ **DESIGNED FOR SMALL AREAS**  
Suitable for a garage or shed

---

- ✔ **MOISTURE MANAGEMENT**  
Reduces the risk of moisture-related damage to your home

---

- ✔ **HAIL RESISTANT**  
Designed for extreme weather conditions



**Sewer Vent**  
colour range:

White

## Sewer Vent

The sewer vent is a wind driven ventilator designed for sewer systems, pits, and drains. Manufactured with stainless steel bearings and an aluminium shaft to withstand the impact of noxious air streams.

### Benefits

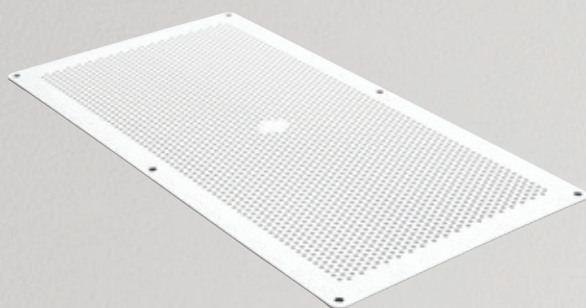
- ✔ **SUITABLE FOR SEWER SYSTEMS, PITS & DRAINS**  
Designed for harsh environments with polluted air flow

---

- ✔ **EASY INSTALLATION**  
Compatible for installation directly onto a 150mm PVC pipe

---

- ✔ **HAIL RESISTANT**  
Designed for extreme weather conditions



**PolyEave Vent**  
colour range:



## PolyEave Vent

PolyEave vents are plastic vents suitable for installation outside under the eave of a roof and allows airflow into the roof space to improve cross flow ventilation. Perfect for working in conjunction with WindMaster™, SupaVent™ & TurboBeam™ ventilators.

### Benefits

- ✔ **HEAT REDUCTION**  
Provides an inflow of outside air into the roof space to improve thermal performance

---

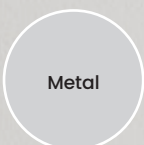
- ✔ **MOISTURE MANAGEMENT**  
Allows cross flow of ventilation to remove excess heat & moisture

---

- ✔ **PEACE OF MIND**  
Australian made & tested



**Metal Eave Vent**  
colour range:



## Metal Eave Vent

Metal Eave vents are installed outside under the eave of a roof and allow airflow into the roof space to improve cross flow ventilation. The Metal Eave vent is designed for homes in bushfire zones up to BAL40 and is recommended for use with Maestro BAL™ or WindMaster™ BAL.

### Benefits

- ✔ **HEAT REDUCTION**  
Provides an inflow of outside air into the roof space to improve thermal performance

---

- ✔ **MOISTURE MANAGEMENT**  
Allows cross flow of ventilation to remove excess heat & moisture

---

- ✔ **PEACE OF MIND**  
Designed for bushfire zones







Whirly Mate  
colour range:

White

## Whirly Mate

The Whirly Mate is a square shaped interior ceiling grille designed to allow controllable ventilation of air flow within your home.

### Benefits

- ✔ **HEAT REDUCTION**  
Allows heat to escape from your living area to your roof space during Summer

---

- ✔ **ADAPTABLE FOR SEASONAL CHANGE**  
Easy to use, open and closable ceiling grille

---

- ✔ **ENHANCE YOUR ROOF VENTILATION SYSTEM**  
Can be used to create total living area ventilation system



Round ceiling grilles  
colour range:

White

## Round ceiling grilles

Round ceiling grilles are designed to be connected to roof mounted ventilators with ducting to reduce heat and moisture from living areas in your home.

### Benefits

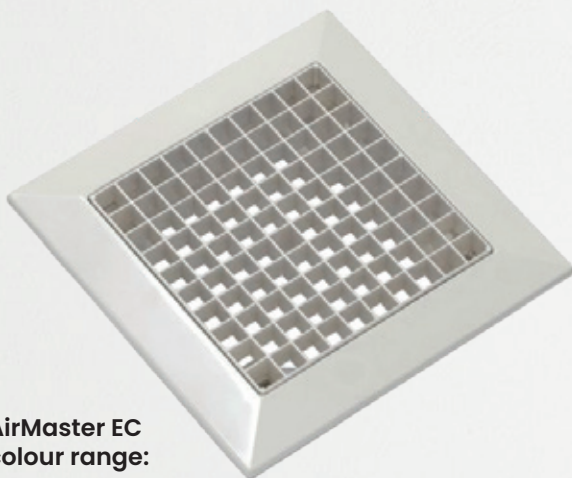
- ✔ **HEAT REDUCTION**  
Allows heat to escape from your living area to your roof space during Summer

---

- ✔ **AIR QUALITY**  
Reduces the level of stale air within your home

---

- ✔ **AESTHETICALLY PLEASING**  
Blends into ceiling surfaces



AirMaster EC  
colour range:

White

## AirMaster EC

The AirMaster EC is a return air grille manufactured from a high quality impact resistant ABS resin specially formulated for maximum colour retention.

### Benefits

- ✔ **EASY TO MAINTAIN**  
Designed with a detachable and magnetic face for easy cleaning

---

- ✔ **SUITABLE FOR TOILET AREAS**  
Ideal for return air purposes

---

- ✔ **SMOOTH SURFACE**  
The smooth surfaces eliminate areas prone to particle build-up



## Turbine Shutter

The Turbine Shutter enables you to manually control the flow of air out of the roof space. In summer, manually open the shutter to let the hot air out of your roof space, and close in winter to keep cold air out & warm air in. Compatible with Bradford's WindMaster™.



## SparkGuard

The SparkGuard is a bushfire rated, stainless steel mesh designed to prevent the entry of sparks and embers into the roof space. Compatible with Bradford WindMaster™ and suitable for all areas, including Bushfire rated areas up to BAL29. To use in conjunction with Windmaster.

**SparkGuard  
colour range:**



## SolaBrite

The SolaBrite is a tubular skylight designed to allow natural light within your home which can reduce the cost of electricity by providing natural light in place of electrical power. Ideally suited to illuminate small, dimly lit rooms.

**SolaBrite  
colour range:**



## SolaBrite Plus

The SolaBrite Plus is a tubular skylight with vents, and is designed to allow natural light within your home. In addition, it can reduce the cost of electricity by providing natural light in place of electrical power and allows ventilation to help prevent heat and moisture build-up in the skylight. Ideally suited to illuminate small, dimly lit rooms.

**SolaBrite Plus  
colour range:**



# Product Specifications

Product	Materials	Size	Ball Bearings	Weight	Wind Speed Rating	Application
WindMaster™	Aluminium	300mm opening	High carbon chromium steel ball bearings	2.0kg	205.2 km/h	Residential homes
SupaVent™	UV stable polymer	250mm opening	Stainless steel bearings	2.0kg	205.2 km/h	Residential homes near coastal areas
TurboBeam™	UV stable polymer	250mm opening	Stainless steel bearings	2.0kg	205.2 km/h	Residential homes near coastal areas, homes with attics
Roof Valve BAL	Aluminium	150mm opening	N/A	0.8kg	N/A	Wet areas: bathroom, kitchen & laundry
Roof Valve with Duct Collar	ASA polymer head & aluminium flashing	150mm opening	N/A	0.8kg	N/A	Wet areas, bathroom & laundry
General Purpose Vent	ASA plastic head with steel shaft	130mm opening	High carbon chromium steel ball bearings	0.4kg	205.2 km/h	Variety of vehicle types and stationary locations
TurboVentura™	ASA plastic head with aluminium shaft, varipitch & flashing	150mm opening	High carbon chromium steel ball bearings	1.2kg	205.2 km/h	Small garages & sheds
Sewer Vent	UV stable polymer	150mm opening	Stainless steel bearings	N/A	N/A	Sewer systems, pits & drains
Poly Eave Vent	ASA polymer	418mmL x 220mmW	N/A	0.17kg	N/A	Residential homes in non-BAL areas
Metal Eave Vent	Aluminium frame with stainless steel mesh	418mmL x 220mmW	N/A	0.3kg	N/A	Residential homes for bush fire zones up to BAL40
Whirly Mate	ABS plastic	352mmL x 352mmW	N/A	0.9kg	N/A	Residential homes
Round Ceiling Grilles	ABS plastic	Available in 4 sizes - 150mm, 200mm, 250mm & 300mm	N/A	N/A	N/A	Residential homes
AirMaster EC	ABS plastic	430mm x 430mm	N/A	0.3kg	N/A	Residential homes for toilet areas
Turbine Shutter	Aluminium	Available in 2 sizes - 250mm & 300mm	N/A	0.3kg	N/A	Residential homes
SparkGuard	Stainless steel mesh	300mm	N/A	N/A	N/A	Residential homes and suitable for WindMaster
SolaBrite	High impact acrylic dome with aluminium flashing	Available in 2 sizes - 300mm & 400mm	N/A	N/A	N/A	Residential homes
SolaBrite Plus	High impact acrylic dome with aluminium flashing	Available in 3 sizes - 350mm, 400mm & 500mm	N/A	N/A	N/A	Residential homes

# Power Driven Ventilation

Motorised and smart solutions for optimal performance.



## Why Choose Power Driven Ventilation?

Power driven vents have the built in smarts that allow you to continuously control the comfort in your home through all seasonal variations.

Fixed speed or automatic heat and humidity detection options are available to manage heat and condensation levels.

The low energy usage of the powered ventilation range supports the reduction of wasted energy consumption.



### Heat Reduction

Removes heat and replaces with outside air



### Energy Efficient

Helps reduce the load on air conditioning



### Moisture Management

Reduce the risk of moisture - related damage to your home



### Improve Air Quality

Replaces stale and polluted air inside your roof cavity with outside air





# AiroMatic™

AiroMatic is set to a powerful fixed speed for continuous, high performance ventilation.

It also includes a built-in Air iQ smart box that can alternatively be set to automatically detect heat and humidity to protect the home when it matters most.

## Benefits

- ✔ **NATURAL LIGHT**  
Deters unwanted pests in your roof space
- ✔ **VARIABLE SPEED**  
Fixed speeds and automatic speed options are available to suit different requirements
- ✔ **MOISTURE MANAGEMENT**  
Reduces risk of condensation, mould and structural damage to your roof space

## Recommended Ventilation Levels

Roof Pitch	Total Ceiling Area <sup>1</sup>	No. of AiroMatic Required	Metal Eave Vents	Make-Up Air Open Area <sup>2</sup>
>22°	<203m <sup>2</sup>	1	4	0.15m <sup>2</sup>
	<407m <sup>2</sup>	2	6	0.21m <sup>2</sup>
≤22°	<127m <sup>2</sup>	1	4	0.15m <sup>2</sup>
	<254m <sup>2</sup>	2	6	0.21m <sup>2</sup>
	<381m <sup>2</sup>	3	8	0.28m <sup>2</sup>

1. Total Ceiling Area is defined as the total ceiling area directly under the roof/attic space.

2. The Make-Up Open Area air is an alternate solution to replace Bradford Metal Eave Vents.

## AiroMatic colour range:



Colours have been reproduced as faithfully as possible, however actual colours may vary due to the printing process. We urge all customers to view a display before making your decision.

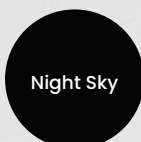


For further details including technical information, visit our website via QR code.  
For more information, call 1300 858 674.





### SolarXVENT colour range:



## SolarXVENT™

The SolarXVENT harnesses the sun and runs energy-free to exhaust heat and humidity from the roof cavity making for a more comfortable, energy-efficient home.

### Benefits

- NO WIRES REQUIRED**  
 Completely powered by the sun, no need for wires or electrical components
- SUITABLE FOR SMALL SPACES**  
 Befitting for locations like sheds where there is no electrical connectivity
- LOWERS ENERGY COSTS**  
 An energy efficient solution to reduce the temperature build up in your roof space



### EcoFan colour range:



## EcoFan®

EcoFan is a quality subfloor ventilator with powerful air flow. It removes damp, stale air and odours from the underfloor, replacing it with outside air.

### Benefits

- SMART VENTILATION**  
 Uses Air iQ to adjust to the environment
- CONDENSATION MANAGEMENT**  
 Three preset fixed speeds can be used for the continuous and reliable reduction of damaging condensation
- AVAILABLE IN A TWIN PACK**  
 Cross flow ventilation is achieved by installing the two on opposite sides of the subfloor

Colours have been reproduced as faithfully as possible, however actual colours may vary due to the printing process. We urge all customers to view a display before making your decision.

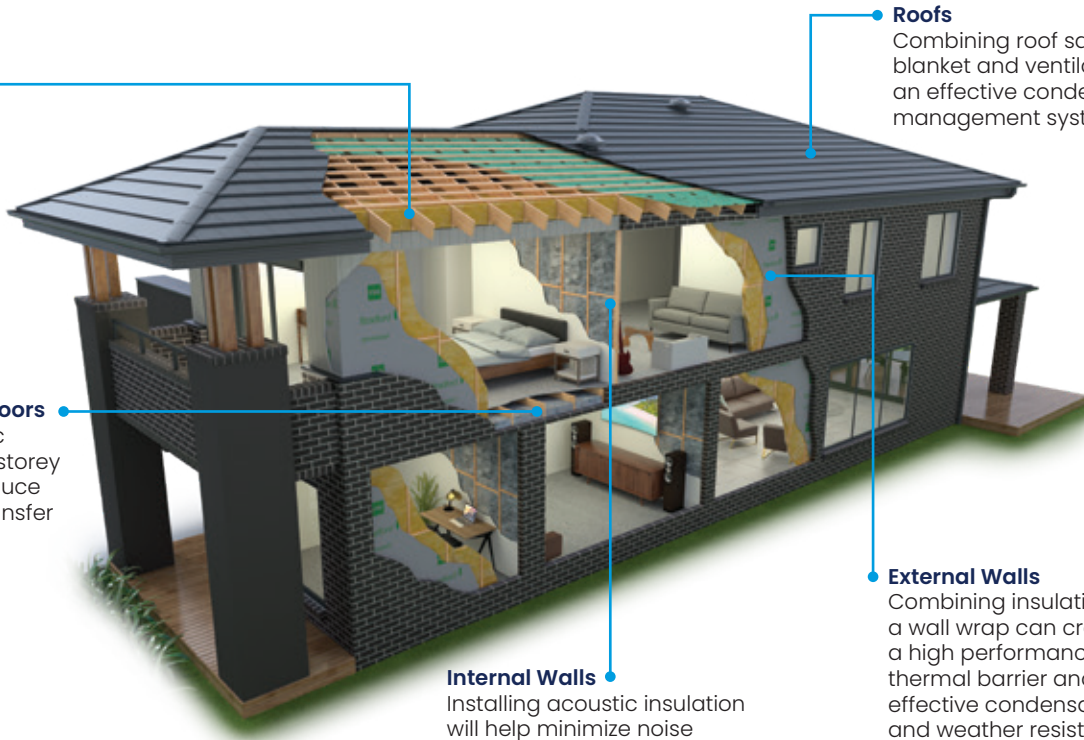
# Product Specifications

Product	Dome & Housing	Throat Diameter	Bushfire Rating	Maximum Flow Rate	Output Voltage	Roof Slope Installation Range & Area
Maestro BAL™	Aluminium	300mm	Compliant up to BAL-40 (AS3959)	596m³/hr	24VDC	3° to 35°
AiroMatic™	UV stable polymer	250mm	N/A	647m³/hr	24VDC	3° to 35°
EcoFan®	UV stable polymer	250mm	N/A	734m³/hr	24VDC	Exterior wall of subfloor
SolarXVENT™	Weatherproof acrylic	150mm	N/A	150m³/hr	18V, Max Power 10W	3° to 35°

# Achieve Total Home Comfort with Bradford

**Ceilings**  
Installing ceiling insulation will provide greater thermal comfort.

**Two-Storey Midfloors**  
Installing acoustic insulation in two-storey midfloors can reduce airborne noise transfer between floors.



**Roofs**  
Combining roof sarking or a roof blanket and ventilation creates an effective condensation management system.

**External Walls**  
Combining insulation with a wall wrap can create a high performance thermal barrier and an effective condensation and weather resistant management system.

**Internal Walls**  
Installing acoustic insulation will help minimize noise transfer between rooms.

## Everyone deserves Total Home Comfort

Imagine walking into a home that's welcoming and a joy to live in, a place where you can relax, work, entertain and enjoy family life in total comfort.

Bradford offers the key to Total Home Comfort with an extensive range of products that allows you to choose the perfect level of comfort for your home and family.



-  **Thermal Comfort**
-  **Acoustic Comfort**
-  **Financial Comfort**
-  **Healthy Home**
-  **Peace of Mind**

SCAN TO VISIT THE WEBSITE

