

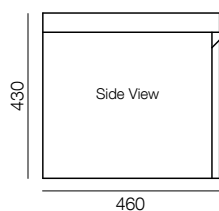
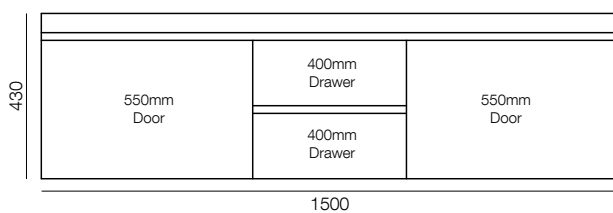
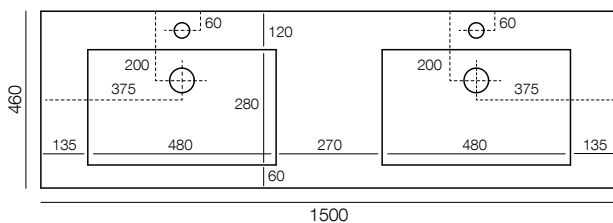
Element Vanity 1500

Wall Hung



The Element vanity strikes the perfect balance between style and simplicity with an easy-care white gloss polyurethane finish. This wall hung vanity offers ample storage with a single (900mm) or double soft close cupboard (1200 and 1500mm) and two good-sized soft closing drawers. Its 50mm high-profile polymarble top with integrated basin features generous bench space as well as being easily maintained. Finger pull handles add to the streamlined look and make this a style that will look great in a range of bathrooms, from classic to contemporary.

SET-OUT FOR LICENSED PLUMBER:



CABINET FINISH

White gloss polyurethane exterior.

Interior: White moisture resistant (MR) melamine.

TOP/BASIN

50mm high, 460mm deep
polymarble top with integrated
double basins

Tap hole options: 1 only per basin.

Tapware sold separately

MECHANISMS/INCLUSIONS

Finger-pull handles.

Soft-closing doors and drawers

PRODUCT DIMENSIONS

W1500 x D460 x H430mm

PACKAGED DIMENSIONS & WEIGHT

W1600 x D500 x H560mm, 90kg

WARRANTY

Ten (10) year product
replacement (see warranty
information over page).

INSTALLATION TIPS

- * Must be installed by a
Licensed Plumber
- * Tap and waste pipework
to be positioned within
cupboard/door cavity
- * Ensure top and sides of
unit are silicon sealed
- * Detailed installation
instructions over page

CIBO DESIGN – WHO ARE WE?

Established in 1994 on
Sydney's northern beaches,
CIBO Design has built
a solid reputation for its
collection of high quality
Australian-designed
bathroomware. Specialising
in producing innovative
bathroom storage solutions,
CIBO's products combine
contemporary design and
quality craftsmanship with
practicality.

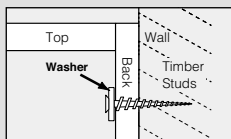
Element Vanity

Delivery/Pick-up & Installation

Please inspect your product within 7 days of delivery (or collection). If your product is damaged or imperfect when opened, do not proceed with installation. If a defective item is installed, CIBO is not liable for removal of the item, nor will CIBO accept responsibility to repair or replace the product. CIBO vanities should only be installed by a licensed plumber.

Returns & Exchanges
Please retain your receipt and contact the 'Returns and Exchanges' Desk at the Bunnings store where you purchased the item.

IMPORTANT NOTE: Use washers with Wall Hung Vanities:



When fixing vanity unit to wall, use washers around the top fixing positions. This will decrease pressure applied to the screw head.

In situations where a wall is out of square, the installer may be required to use packers behind the vanity to ensure the unit does not become twisted during installation.

IT IS THE RESPONSIBILITY OF THE INSTALLER TO ADJUST THE DOOR(S) AND/OR DRAWER(S) AFTER INSTALLATION.

Under no circumstances should vanities and/or tops be tiled into the wall. CIBO vanities and basin/tops must be fitted to finished/completed wall coverings e.g., tile, masonry or other cladding method deemed acceptable, as per the building code (of Australia) 2013. The CIBO Warranty does not cover any vanity and/or top and/or basin that has been tiled 'into' a wall i.e., fitting or fixing a vanity to a wall and tiling around it, and/or tiling down and/or around the vanity and top/basin.

Vanity Unit Installation

1. Carefully remove drawer(s) and door(s) (see **Drawer & Door Removal** instructions) and cover runners before installation, to avoid damage. If top has not been fixed to vanity, remove it from vanity.
2. Using a hole saw, drill holes for water supply pipes, wastes etc.
3. Carefully move cabinet into place. Pack vanity to required height ensuring vanity top is level from side to side and front to back. Packers may be required behind the unit to ensure top is level and to prevent unit from twisting.
4. Once vanity is level, fasten it to the wall using washers around the appropriate fixings ie. screws, bolts (not supplied). It is the installers responsibility to determine what fixing materials are needed. Fixings should be made as high as possible on unit.

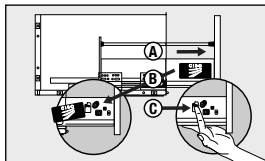
(see 'IMPORTANT NOTE' re Wall Hung Vanities)

5. Sweep debris from interior of unit.
6. Now replace top ensuring front and ends of top line up with front and ends of unit. This may leave gaps between top and wall. Fix top to vanity with silicone.
7. The unit must be sealed (along the back edge of top and down the sides) against the wall with bathroom quality anti-fungal silicone. The best method of applying silicone is to cut the appropriate sized tip at a 65° angle and to evenly run a bead around the unit ensuring all gaps are filled. Seal around the cabinet with silicone.
8. Spray soapy water on the silicone joint (between the wall and top) to stop silicone sticking to wall, then wipe off excess silicone and soapy water.
9. Position the plug & waste in the basin.
10. Pipes can now be connected.
11. Check plumbing connections for leaks.

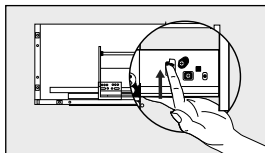
DAMAGE MAY OCCUR IF THE PRODUCTS ARE CONSTANTLY EXPOSED TO WATER. SILICONE MUST BE USED TO SEAL ALL JOINS – TOPS, CABINET SIDES AND KICKBOARDS MUST BE SEALED TO PREVENT WATER PENETRATION.

Drawer Removal

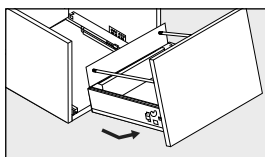
(before vanity installation)



1. **A** Pull out the drawer. **B** Take the CIBO caps off both sides. **C** Locate release levers on both sides.

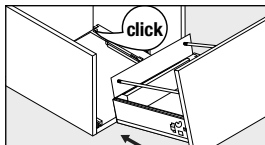


2. With tip of your finger lift the release levers on both sides at the same time.

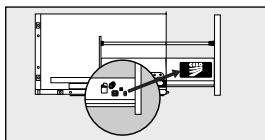


3. Lift and slide out the whole drawer.

Drawer Replacement



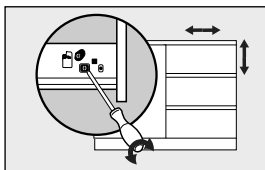
1. Insert the drawer back on the runner – when you hear a "click" it has been connected.



2. Replace the CIBO caps.

Drawer Front Alignment

(after vanity installation)

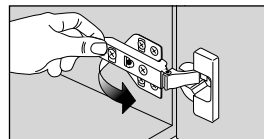


Adjustment point for drawer front alignment if required.

Door Removal/Replacement

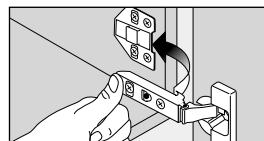
(responsibility of the installer)

During installation, it is advisable to remove door(s) from cabinet. To do this, unclip all hinges on each door.



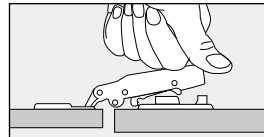
To Remove Doors

Locate button at back of top hinge and press. Hold base of door and pull forward to disengage top hinge. Repeat with bottom hinge.



To Replace Doors

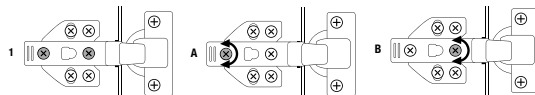
Line up hinges with corresponding hinge plates. At base of hinge is a small metal rod that must be lined up with cradle arms of hinge-plate.



Once hinge is in place, push back of hinge down towards the hinge-plate. Hinge will snap down and engage.

Door Hinge Adjustment (responsibility of the installer)

Locate the hinges of the door to be adjusted. It may be necessary to adjust all hinges in order to achieve correct alignment.



1. There are two primary screws that can be adjusted to align the door.
 - A. This screw moves the hinge left or right. Clockwise direction = moves the hinge left. Anticlockwise direction = moves the hinge right. (The opposite occurs when the hinge is fitted the other way around)
 - B. This screw moves the hinge in or out. Clockwise direction = moves the hinge towards the vanity. Anticlockwise direction = moves the hinge away from the vanity

Warranty

This product is covered by a ten (10) year product replacement warranty (excluding labour). Products which are within 10 years from the date of purchase, found upon inspection by an authorised representative to be defective will be repaired or exchanged with an equivalent product free of charge. Replaced items become CIBO Design's property. All replacement products will be available for collection without charge to the customer at the nearest Bunnings store to the customer's location, or elsewhere as agreed with the customer.

Warranty for Labour and Spare Parts – One (1) Year

The labour for the replacement of products and spare parts to which this warranty applies will be supplied by CIBO Design if the warranty claim is made within one (1) year from the date of purchase.

Spare parts which are within one (1) year from the date of purchase and found upon inspection by an authorised CIBO Design representative to be defective in construction, material or assembly, will be replaced free of charge. Products found to be faulty more than one (1) year from the date of purchase will be replaced free of charge by CIBO Design. After one (1) year from date of purchase, labour and spare parts costs are the responsibility of the customer.

Warranty Conditions

This warranty will apply only under all of the following conditions:

- The item has been installed by a licensed plumber;
- This item has been installed for and subjected to domestic residential use only;
- Failure is due to the manufacture of the product;
- Proof of purchase (including date

of purchase) is provided;

- The installation of the product is in accordance with the instructions provided. This warranty does not include faults caused by:
 - Unsuitable or improper use;
 - Incorrect installation or installation not in accordance with the instructions provided;
 - Installation or part installation by the purchaser or any person other than a Licensed Plumber;
 - Normal wear and tear including water* and natural causes such as sunlight, humidity and other environmental conditions or factors;
 - Inadequate or complete lack of maintenance;
 - Chemical, electrochemical or electrical influences;
 - Harsh detergents or abrasive cleaners used on product finishes

Important note: CIBO Design vanity cabinets are manufactured from Moisture Resistant (MR) materials but are not

waterproof. Care must be taken to dry spillages or leakage of water that may gain access to cabinetry. Accurate sealing of the basin, vanity cabinet and kickboard (where applicable) is vital for proper maintenance of the product and ensuring longevity. **Exclusions** - To the fullest extent permitted by law, CIBO Design excludes all liability for damage or injury to any person, damage to any property, and any indirect consequential or other loss or damage. **Warranty Claim Procedure** - Please retain your receipt and contact the 'Returns and Exchanges' Desk at the Bunnings store where you purchased the product. Warranty claims can also be sent to: CIBO Design, After Sales Service PO Box 7461, Warringah Mall, Brookvale NSW 2100. Our goods come with guarantees that cannot be excluded under the Australian Consumer Law. You are entitled to a replacement or

refund for a major failure and compensation for any other reasonably foreseeable loss or damage. You are also entitled to have the goods repaired or replaced if the goods fail to be of acceptable quality and the failure does not amount to a major failure. The benefits to the customer given by this CIBO Design warranty are in addition to any other rights and remedies available to the customer as a consumer under any laws that relate to the goods covered by this CIBO Design warranty. CIBO Design Pty Ltd
1/130 Old Pittwater Road
Brookvale NSW Australia
Postal: PO Box 7461, Warringah Mall, Brookvale NSW 2100
Tel: (02) 9939 4434
Email: aftersales@cibodesign.com.au